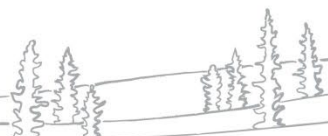




Mackenzie Valley Highway Project

Engagement Feedback and Early Findings in the Environmental Assessment

November 2022



Government of
Northwest Territories

Agenda

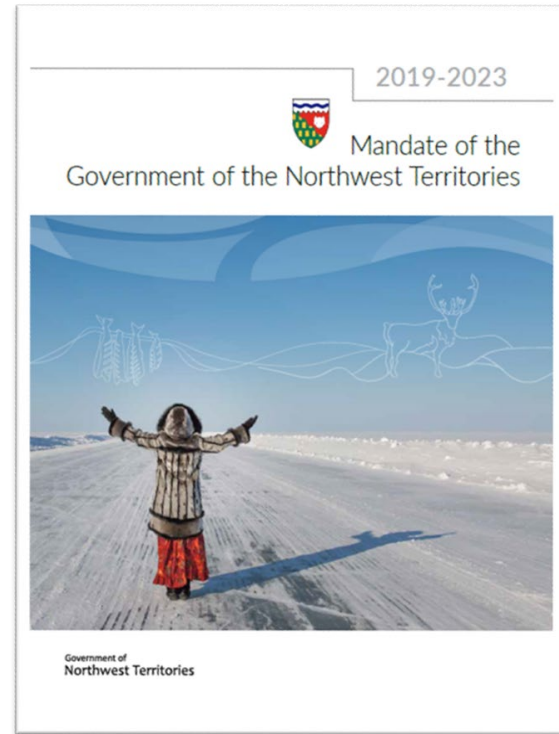
- Mackenzie Valley Highway Project Update
- What We Heard So Far
- Project Design – Topics for Discussion
- Preliminary Environmental Assessment Findings
- Engagement Opportunities
- Next Steps



GNWT Strategic Initiatives

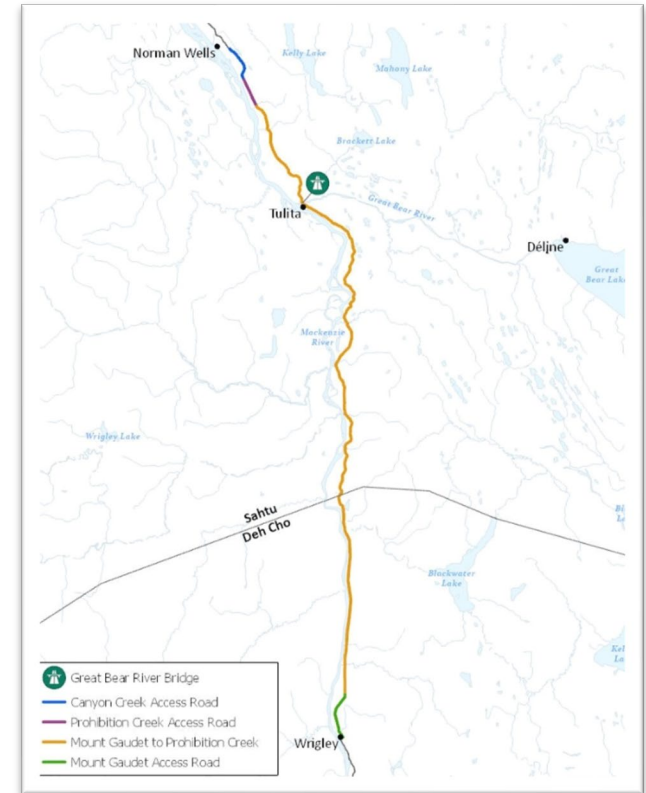
“These projects will provide the foundational infrastructure to support an improved quality of life and lower cost of living for NWT residents, as well as support the expansion and diversification of the economy.”

- **Mackenzie Valley Highway**
- Slave Geological Province Corridor
- Taltson Hydro Expansion



Mackenzie Valley Highway at a Glance

- All-season road between Wrigley and Norman Wells
- Mackenzie Valley Highway Environmental Assessment
 - Developer's Assessment Report
 - Environmental and Engineering Studies
 - Archaeological Studies
 - Wildlife Related Studies
 - Traditional Knowledge Studies
 - Socio-Economic Impact Assessment



April to July 2022 Engagement – What We Heard

Feedback during engagement activities has included:

- Safety
- Permafrost, Erosion & Stability
- Overflow
- Camps, Waste & Wastewater
- Fish & Wildlife
- Cultural Protection
- Socio-economic Conditions
- Lessons Learned



April to July 2022 Engagement – What We Heard

There is general support to construct an all-season road. Feedback broadly centred on 8 themes.

Theme 1: Safety

- Participants identified a number of safety concerns with the existing winter road.

Discussion topic: road cuts



April to July 2022 Engagement – What We Heard

Theme 2: Permafrost, Erosion & Stability

- Permafrost thawing, erosion, and landslides are of concern.
- Concerns were raised about slumping along the banks of Mackenzie River.



April to July 2022 Engagement – What We Heard

Theme 3: Overflow

- Participants recommended avoiding areas with known ice and water overflow and road washouts.

Theme 4: Camps, Waste & Wastewater

- Concerns were shared about the capacity of municipal facilities.



April to July 2022 Engagement – What We Heard

Theme 5: Fish & Wildlife

- Protection of caribou, fish, moose, other fur-bearing animals is a priority.

Theme 6: Cultural Protection

- Protect culturally important areas (Bear Rock, known burial sites, and cabins), and keep winter road access.
- Discussion topic: effects to wildlife, fish, and land use areas



April to July 2022 Engagement – What We Heard

Theme 7: Socio-Economic Conditions

- Concerns regarding construction and camps were shared.
- Concern was expressed whether there are adequate emergency response services.

Theme 8: Lessons Learned

- Lessons learned from other northern road projects should be considered.



Breakout Group Topics

We have posters to introduce the following discussion topics:

- Water Sources and Water Use– where and how water will be used
- Locations of Road Cuts and Quarries
- Effects on Caribou and Moose and Other Wildlife
- Effects on Fisheries and Water Resources
- Effects on Traditional and Non-traditional Land Use and Harvesting



New Topics for Discussion

Location of Water Sources

- Proposed water sources to be used for camps and road construction and maintenance

Location of Road Cuts

- Road cuts improve the safety of the highway
- They can be a source of granular or rock material



Developers Assessment Report – Preliminary Assessment Findings



Caribou and Moose

The assessment will look at the following potential effects during construction and operations/maintenance:

- Change in habitat
- Change in movements
- Change in mortality risk
- Change in health



Developers Assessment Report – Preliminary Assessment Findings



Fisheries and Water Resources

The assessment will look at the following potential effects during construction and operations/maintenance:

- Change in water amounts (flow or volume)
- Change in water quality
- Change in fish health or mortality

Developers Assessment Report – Preliminary Assessment Findings

Traditional and Non-traditional Land Use and Harvesting

The assessment will look at the following potential effects during construction and operations/maintenance:

- Change in availability of resources
- Change in access to resources
- Change in cultural or traditional land use sites



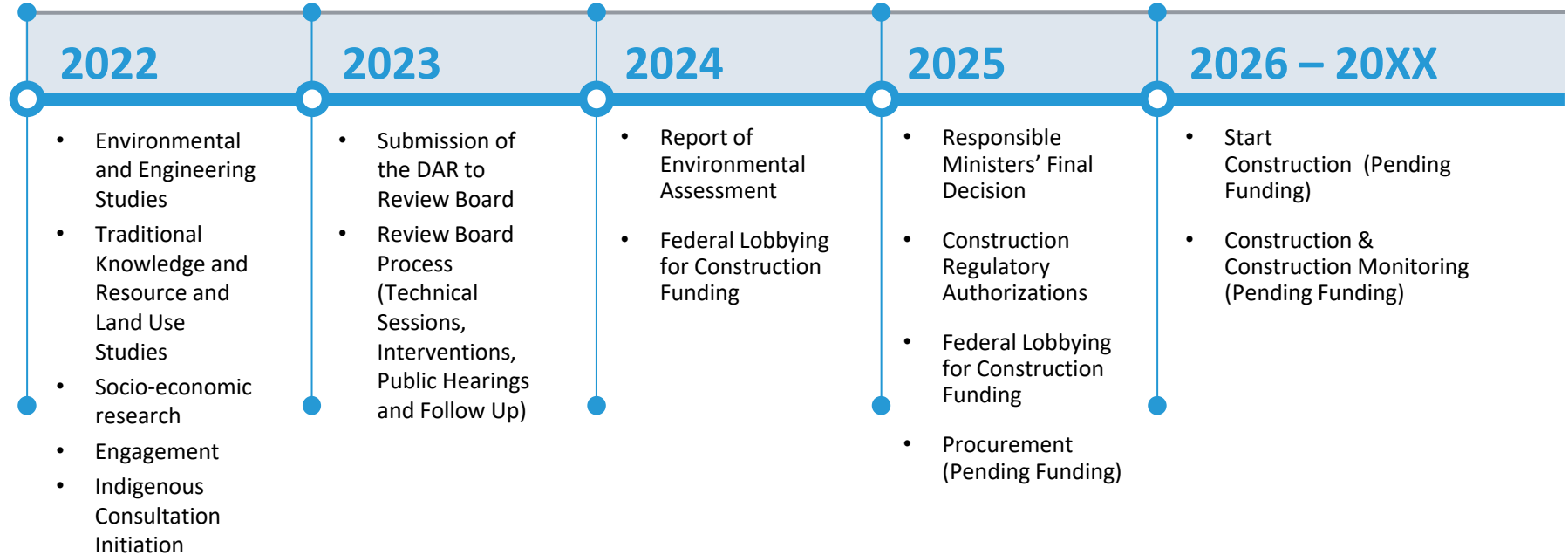
Next Opportunities for Input

We will be back in a few weeks. Our goals are to:

- Recap what we heard from you
- Review mitigations – the actions that GNWT will take to reduce effects to the most important aspects of the environment



Mackenzie Valley Highway Timelines



Questions?

Email: MVH@gov.nt.ca

Project Website: www.inf.gov.nt.ca/en/MVH

Have Your Say: <https://haveyoursay/nwt-tno-ca/Mackenzie-valley-highway-project>

