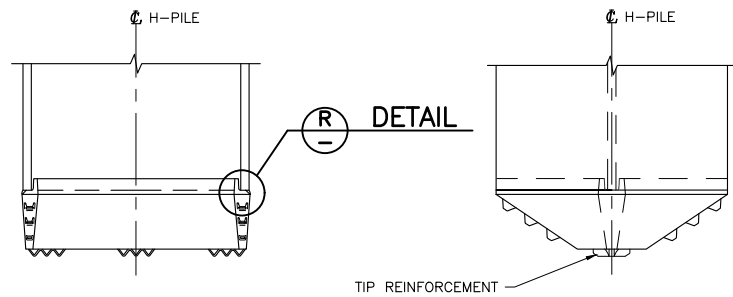


H-PILE SPLICE
1:5

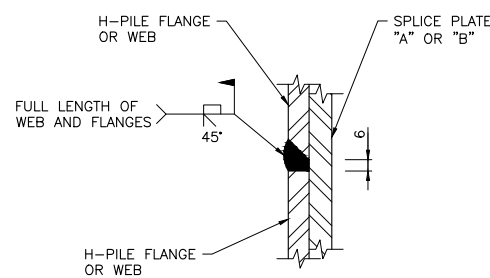
NOTE:
FOR SPLICE PLATE SIZES SEE
H-PILE SPLICE PLATE TABLE

SPLICE PLATE "B"
(TYP)
OR
SPLICE PLATE "B" ALTERNATE
(CONTRACTOR'S CHOICE)
CORNERS OF OVERSIZED SPLICE PLATE "B"
SHALL BE CUT FLUSH AND GROUND
SMOOTH WITH FLANGE EDGE (TYP)

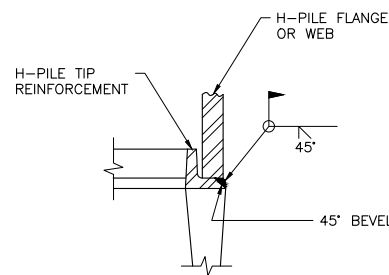


H-PILE TIP REINFORCEMENT
1:5

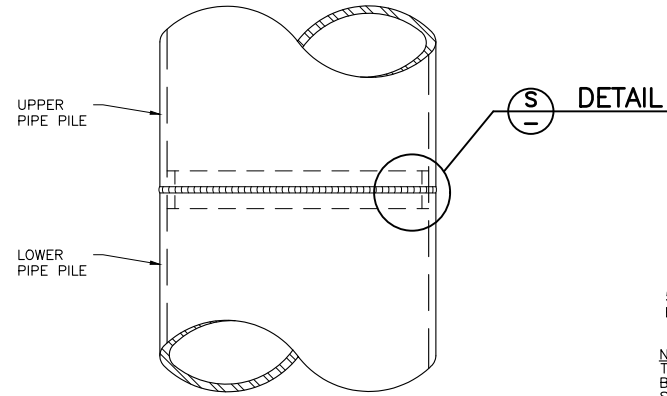
TIP REINFORCEMENT



P DETAIL
1:2

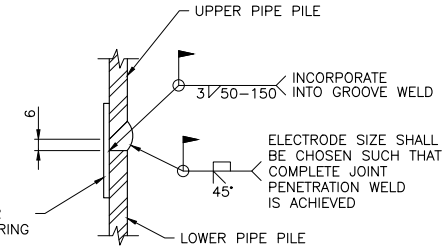


R DETAIL
1:2

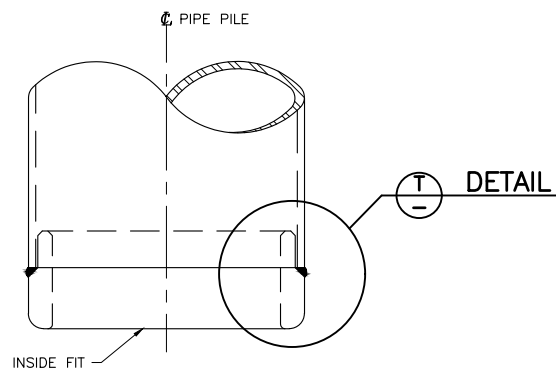


PIPE PILE SPLICE
1:5

NOTE:
THICKNESS OF BACKING BAR TO BE CHOSEN
BASED ON WELDING PROCESS USED AND
SHALL MEET THE MINIMUM REQUIREMENTS
OF AWS SPECIFICATION D1.5

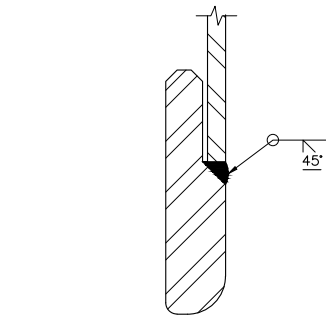


S DETAIL
1:2

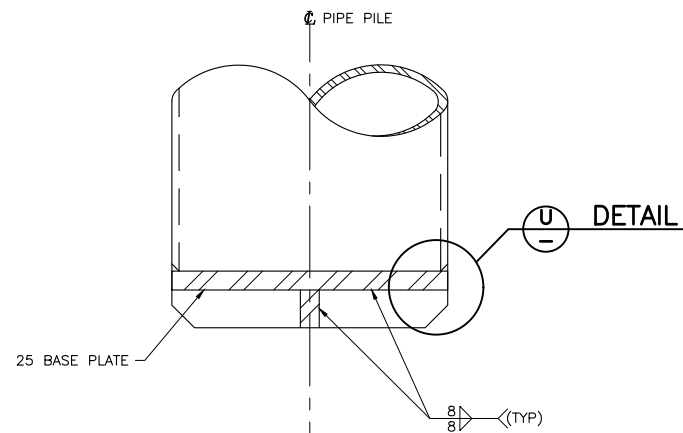


OPEN ENDED PIPE PILE TIP REINFORCEMENT
1:5

INSIDE FIT

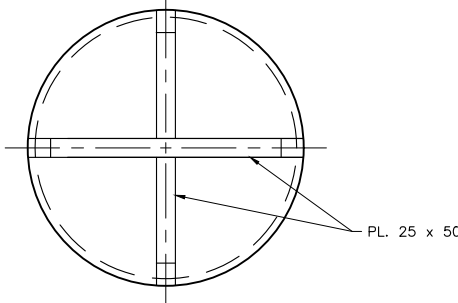


T DETAIL
1:2

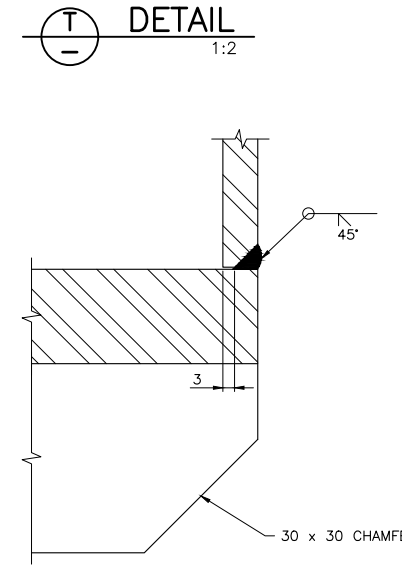


CLOSED ENDED PIPE PILE END PLATE
1:5

25 BASE PLATE



U DETAIL
1:1



GENERAL NOTES:

- ALL DIMENSIONS ARE IN MILLIMETRES UNLESS NOTED OTHERWISE.
- H-PILES AND H-PILE SPLICE PLATES SHALL CONFORM TO ASTM A572/A572.1 GRADE 50 OR CSA G40.21M GRADE 350W. H-PILES AND H-PILE SPLICE PLATES SHALL BE THE SAME GRADE OF STEEL.
- STEEL PIPE PILING SHALL CONFORM TO ASTM A252 GRADE 2.
- SHOP WELDING SHALL BE IN ACCORDANCE WITH THE STANDARD SPECIFICATIONS FOR BRIDGE CONSTRUCTION SECTION 6 - STRUCTURAL STEEL.
- FIELD WELDING OF PILE SPLICES AND REINFORCEMENT PILE SHALL BE IN ACCORDANCE WITH THE STANDARD SPECIFICATIONS FOR BRIDGE CONSTRUCTION SECTION 3 - FOUNDATION PILES.
- PILE ENDS SHALL BE FLAME CUT, STRAIGHT AND SQUARE, USING A STEEL GUIDE PRIOR TO SPLICING. BEVEL CUTS SHALL BE 45 DEGREES. THE BEVEL ON THE UPPER PIPE PILE SHALL BE FLAME CUT USING A MECHANICAL PIPE BEVELLING MACHINE.
- PILE TIP REINFORCEMENT CONFIGURATIONS SHOWN ARE ACCEPTABLE CONFIGURATIONS. THE USE OF OTHER CONFIGURATIONS REQUIRES DEPARTMENT APPROVAL.

H-PILE SPLICE PLATE TABLE

H-PILE DESIGNATION	SPLICE PLATE DIMENSIONS		FILLET WELD SIZE "S"
	PLATE "A" (WEB)	PLATE "B" (FLANGE)	
HP 310 X 79	12 x 160 x 160	12 x 200 x 200	6
HP 310 X 94	12 x 160 x 160	12 x 200 x 200	6
HP 310 X 110	12 x 160 x 160	12 x 200 x 200	6
HP 360 X 132	12 x 190 x 190	12 x 250 x 250	6
HP 360 X 174	12 x 190 x 190	12 x 250 x 250	8

* SPLICE PLATE "B" MAY BE OVERSIZED TO PROVIDE BACKING FOR THE FULL FLANGE WIDTH AND THEN CUT FLUSH AND GROUND SMOOTH. PLATE THICKNESS AND WELD SIZE SHALL BE AS SPECIFIED.

Government of Northwest Territories
Consultant Logo

Rev	Date	Description	Init

REVISIONS

Government of Northwest Territories
STANDARD DRAWING
STEEL PILE DETAILS

DESIGNED	K. HABEL	DATE	OCTOBER 25, 2024
CHECKED	K. WILLIS	DATE	OCTOBER 25, 2024
DRAWN	T. CHIU	DATE	OCTOBER 25, 2024
SCALE	AS SHOWN		

PROJECT No.	PREPARED UNDER THE DIRECTION OF K. HABEL ENGINEER OF RECORD DATE OCTOBER 25, 2024
DRAWING No.	S-003