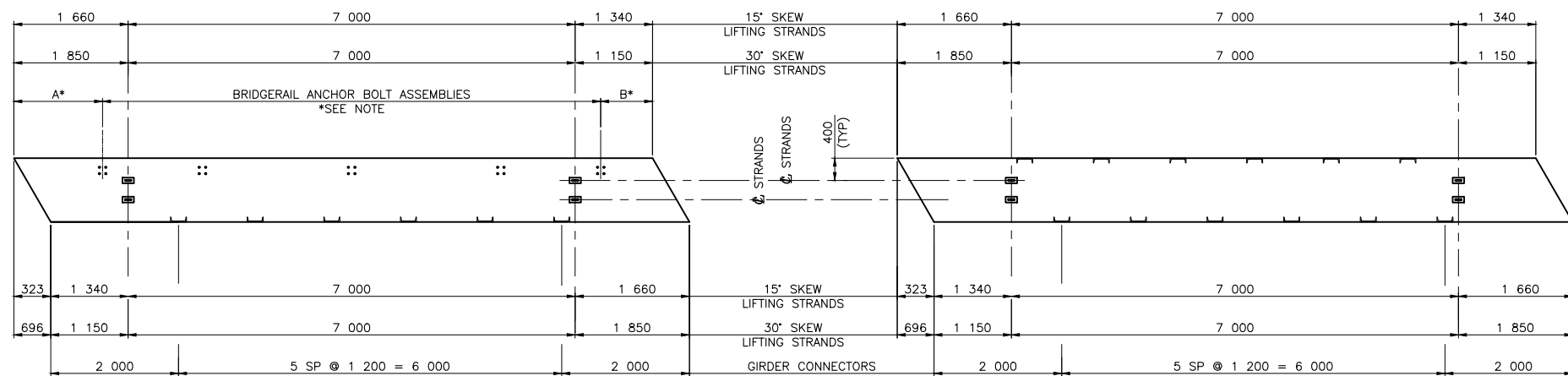


EXTERIOR GIRDER – SQUARE END
1:50

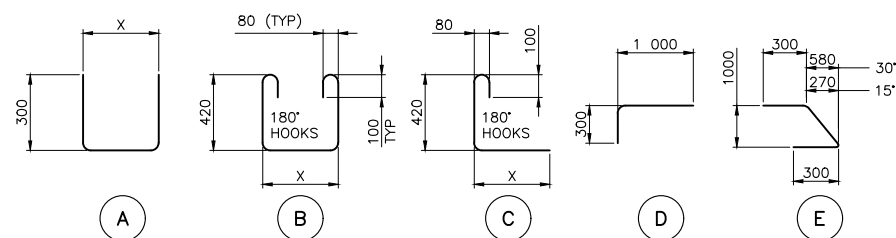
INTERIOR GIRDER – SQUARE END
1:50



EXTERIOR GIRDER – SKEW END
1:50

INTERIOR GIRDER – SKEW END
1:50

* NOTE: FOR NUMBER AND SPACING OF BRIDGERAIL ANCHOR BOLT ASSEMBLIES, SEE BRIDGERAIL LAYOUT ON SITE SPECIFIC DRAWINGS.

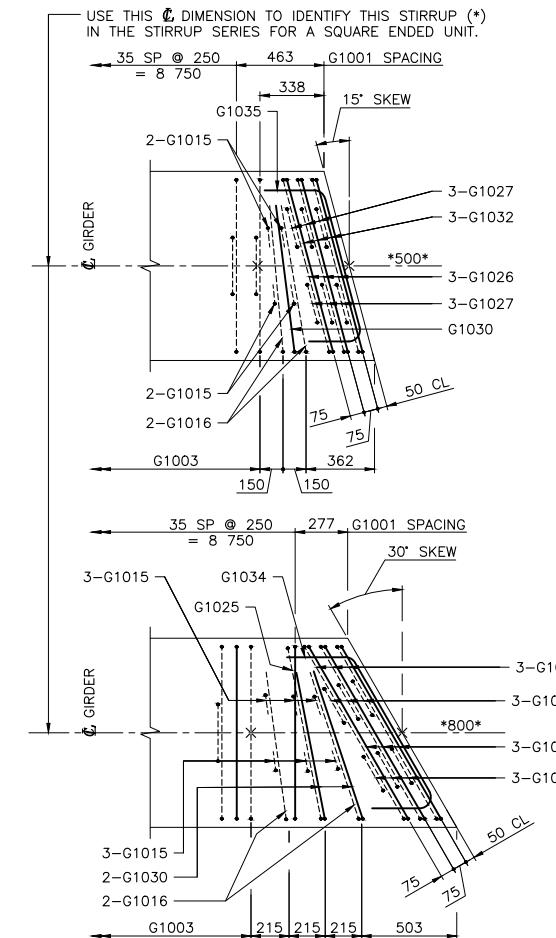


BAR TYPES

(ALL BAR DIMENSIONS ARE OUT TO OUT) NTS

MARK	SIZE	TYPE	X	Y	LENGTH	- EXTRA BARS FOR 2 ENDS			
						15' SKEW		30' SKEW	
						No.	MASS	No.	MASS
G1015	10	C	120		670	8	4	12	6
G1016	10	C	1 000		1 550	4	5	4	5
G1023	10	B	1 300		2 400			6	11
G1024	10	B	325		1 425			12	13
G1025	10	B	1 160		2 260			2	4
G1026	10	B	1 165		2 265	6	11		
G1027	10	B	290		1 390	12	13		
G1030	10	D			1 300	2	2	4	4
G1031	10	A	1 300		1 900			6	9
G1032	10	A	1 165		1 765	6	8		
G1034	10	E			1 755			2	3
G1035	10	E			1 635	2	3		

TOTAL kg: 46 55



SKEW GIRDER END REINFORCING BARS
1:20

* WORK THESE DRAWINGS TOGETHER: S-101-24, S102-24 AND S-107-24

Government of Northwest Territories
Consultant Logo

Rev	Date	Description	Init

REVISIONS

Government of Northwest Territories
STANDARD DRAWING
PRESTRESSED CONCRETE 10 m TYPE SL-510
INTERIOR AND EXTERIOR GIRDER LAYOUTS

DESIGNED	K. HABEL	DATE	OCTOBER 25, 2024
CHECKED	K. WILLIS	DATE	OCTOBER 25, 2024
DRAWN	T. CHIU	DATE	OCTOBER 25, 2024
SCALE	AS SHOWN		

PROJECT No.	PREPARED UNDER THE DIRECTION OF K. HABEL ENGINEER OF RECORD DATE OCTOBER 25, 2024
	DRAWING No. S-102-24

NOTES:

- SHIFT SLAB BARS TO CLEAR LIFTING HOOK POCKETS WHERE REQUIRED.
- SLAB BARS NOT DIMENSIONED ARE TIGHT AGAINST ADJACENT STIRRUP.
- SKEWS ARE SHOWN RIGHT HAND FORWARD.
- LEFT HAND SKEWS ARE OPPOSITE AS SHOWN.
- THE USE OF 30' SKEW REQUIRES APPROVAL.