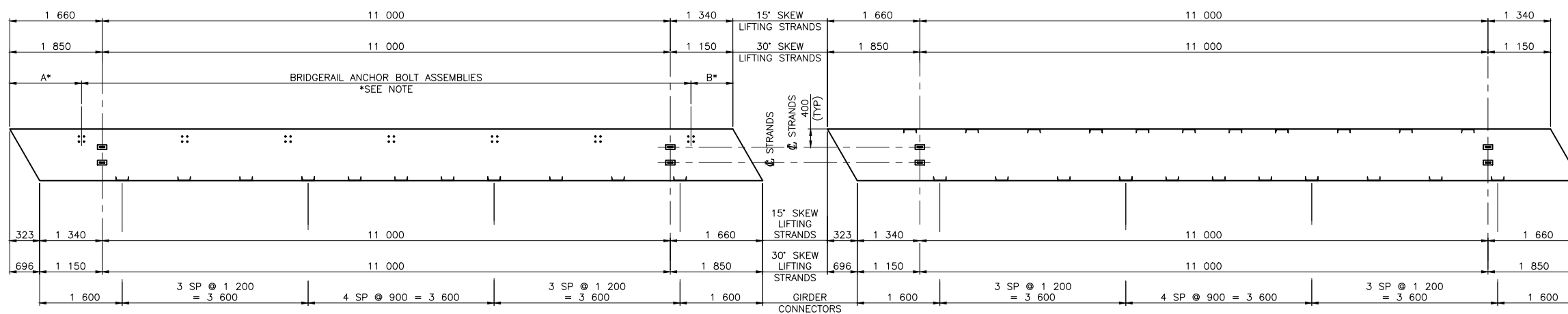


EXTERIOR GIRDER – SQUARE END
1:50

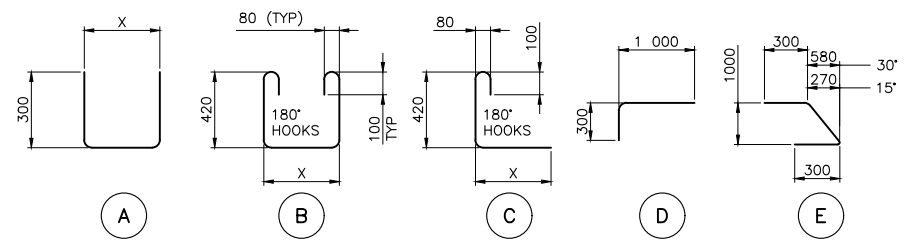
INTERIOR GIRDER – SQUARE END
1:50



EXTERIOR GIRDER – SKEW END
1:50

INTERIOR GIRDER – SKEW END
1:50

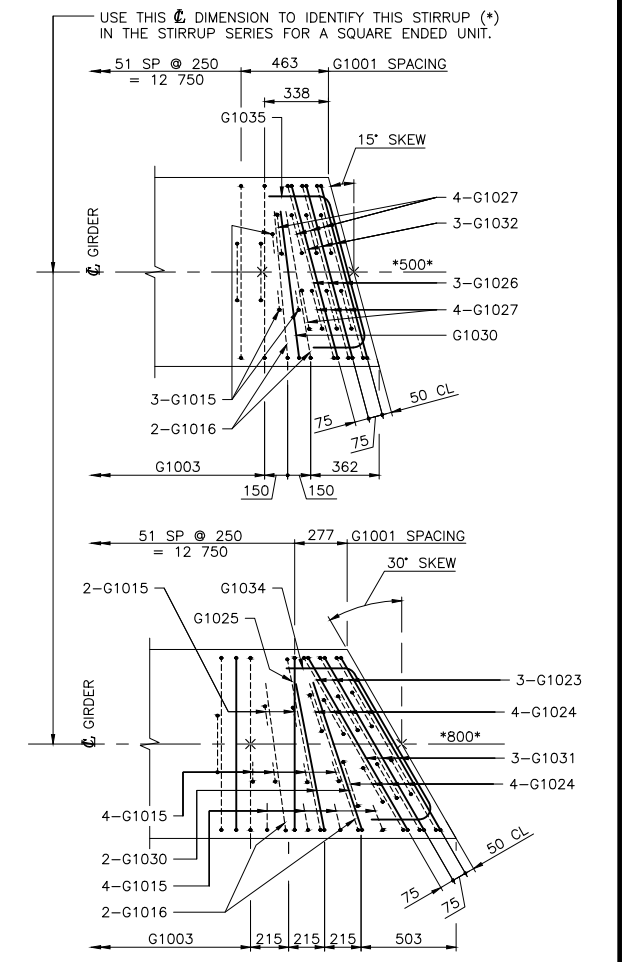
* NOTE: FOR NUMBER AND SPACING OF BRIDGERAIL ANCHOR BOLT ASSEMBLIES, SEE BRIDGERAIL LAYOUT ON SITE SPECIFIC DRAWINGS.



BAR TYPES
(ALL BAR DIMENSIONS ARE OUT TO OUT) NTS

BAR LIST: – INTERIOR SKEWED GIRDER						– EXTRA BARS FOR 2 ENDS			
MARK	SIZE	TYPE	X	Y	LENGTH	15° SKEW		30° SKEW	
						No.	MASS	No.	MASS
G1015	10	C	120		670	6	3	20	11
G1016	10	C	1 000		1 550	4	5	4	5
G1023	10	B	1 300		2 400			6	11
G1024	10	B	325		1 425			16	18
G1025	10	B	1 160		2 260			2	4
G1026	10	B	1 165		2 265	6	11		
G1027	10	B	290		1 390	16	17		
G1030	10	D			1 300	2	2	4	4
G1031	10	A	1 300		1 900			6	9
G1032	10	A	1 165		1 765	6	8		
G1034	10	E			1 755			2	3
G1035	10	E			1 635	2	3		

TOTAL kg: 49 65



SKEW GIRDER END REINFORCING BARS
1:20

* WORK THESE DRAWINGS TOGETHER: S-105-24, S106-24 AND S-107-24

Government of Northwest Territories

Consultant Logo

Rev	Date	Description	Init

REVISIONS

Government of Northwest Territories

STANDARD DRAWING

PRESTRESSED CONCRETE 14 m TYPE SL-510

INTERIOR AND EXTERIOR GIRDER LAYOUTS

DESIGNED	K. HABEL	DATE	OCTOBER 25, 2024
CHECKED	K. WILLIS	DATE	OCTOBER 25, 2024
DRAWN	T. CHIU	DATE	OCTOBER 25, 2024
SCALE	AS SHOWN		

<p>PROJECT No.</p>	<p>PREPARED UNDER THE DIRECTION OF</p> <p>K. HABEL</p> <p>ENGINEER OF RECORD</p> <p>DATE OCTOBER 25, 2024</p>
<p>DRAWING No.</p> <p style="text-align: center; font-weight: bold;">S-106-24</p>	<p>CANCEL PRINTS BEARING PREVIOUS LETTER</p>

- NOTES:**
- SHIFT SLAB BARS TO CLEAR LIFTING HOOK POCKETS WHERE REQUIRED.
 - SLAB BARS NOT DIMENSIONED ARE TIGHT AGAINST ADJACENT STIRRUP.
 - SKEWS ARE SHOWN RIGHT HAND FORWARD.
 - LEFT HAND SKEWS ARE OPPOSED AS SHOWN.
 - THE USE OF 30° SKEW REQUIRES APPROVAL.