

END VIEW

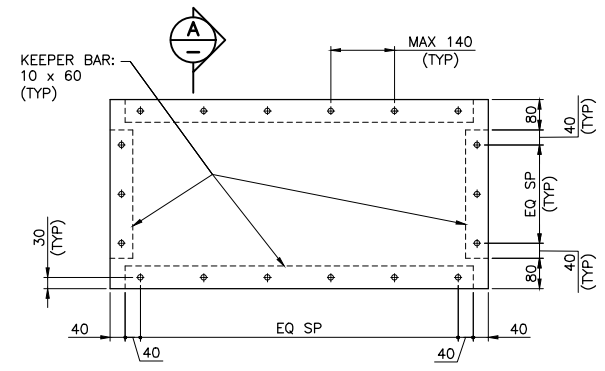
SIDE VIEW

CONCRETE GIRDER EXPANSION BEARING DETAILS
1:10

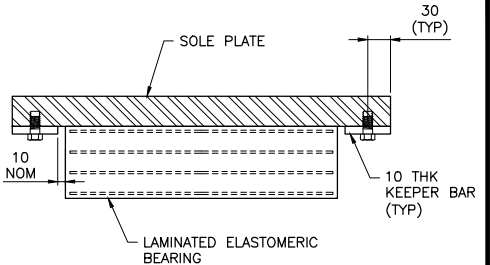
* IN ORDER TO COMPENSATE FOR ZINC CONTAMINATION WHEN WELDING A GALVANIZED PLATE, SUBTRACT 2 FROM SIZE OF WELD FOR DESIGN. FOR EXAMPLE, IF SPECIFYING 8 WELD, USE 6 WELD IN DESIGN

** NOTE:
TRANSVERSE JOINTS BETWEEN SOLE PLATE AND SHOE PLATE TO BE PREPARED AS FOLLOWS:
1. SOLVENT WIPE (XYLENE) FOLLOWED BY A WIPE OFF WITH CLEAN DRY RAG
2. APPLY SIKAFLEX PRIMER 205 OR APPROVED EQUIVALENT
3. CAULK WITH SIKAFLEX 1A OR APPROVED EQUIVALENT

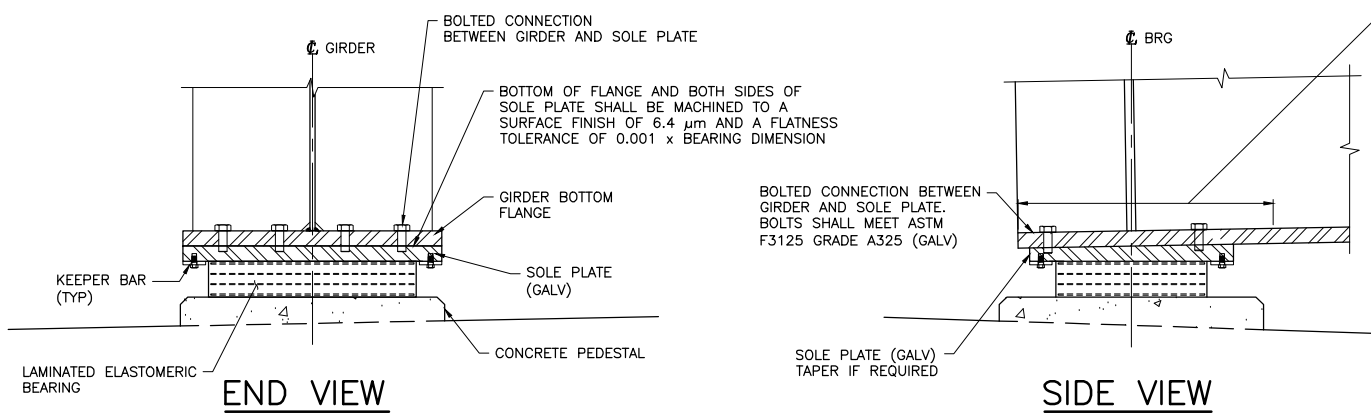
NOTES:
IF APPROVED, GROUT PADS MAY BE USED IN PLACE OF THE PEDESTALS SHOWN, SUBJECT TO THE FOLLOWING REQUIREMENTS:
• A GALVANIZED STEEL SOLE PLATE C/W KEEPER BARS SHALL BE PROVIDED BELOW THE BEARING.
• THE GROUT PAD HEIGHT SHALL BE A MINIMUM OF 50 mm FROM TOP OF CONCRETE TO UNDERSIDE OF MASONRY PLATE.
• THE GROUT PAD SHALL BE RECESSED A MINIMUM OF 40 mm INTO THE CONCRETE BELOW OVER THE FULL EXTENT OF THE GROUT PAD.



KEEPER BAR PLAN
1:10



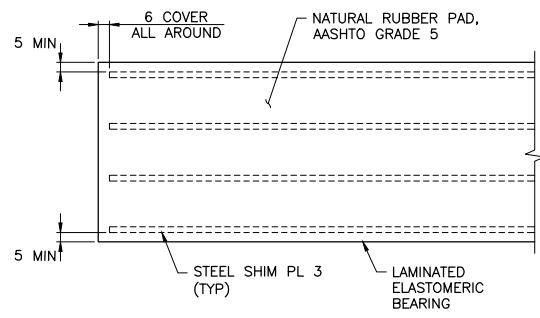
SECTION A
1:5



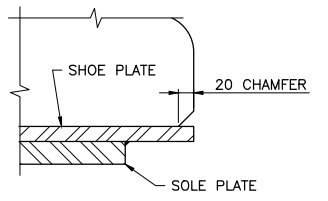
END VIEW

SIDE VIEW

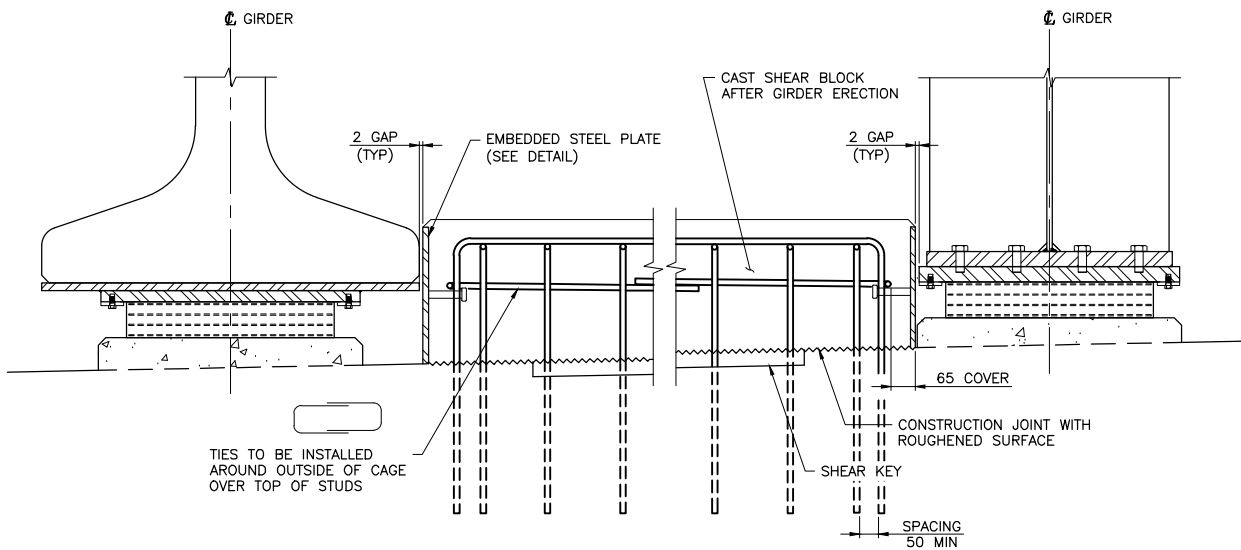
STEEL PLATE GIRDER EXPANSION BEARING DETAILS
1:10



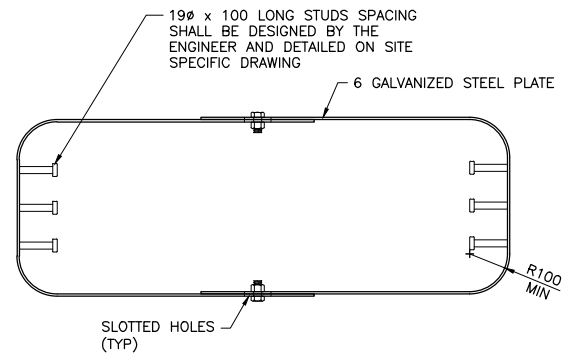
BEARING PAD DETAIL
NTS



DETAIL P
1:5



CONCRETE SHEAR BLOCK DETAILS
1:10



EMBEDDED STEEL PLATE DETAIL
1:10

DETAILS SHOWN ARE CONCEPTUAL AND REPRESENT DEPARTMENT PRACTICES AS REFERENCED IN THE STRUCTURES (BRIDGES) DESIGN GUIDELINES CONSULTANT IS FULLY RESPONSIBLE FOR DESIGNING THE DETAILS AND SHALL INCORPORATE THE DETAILS ON THE SITE SPECIFIC DRAWINGS AS APPROPRIATE

NOT FOR CONSTRUCTION

GENERAL NOTES:

- ALL DIMENSIONS ARE IN MILLIMETRES UNLESS NOTED OTHERWISE.
- NU GIRDERS SHOWN AS EXAMPLE FOR CONCRETE GIRDERS, OTHER TYPES OF GIRDERS SIMILAR.

Government of Northwest Territories

Consultant Logo

Rev	Date	Description	Init

REVISIONS

Government of Northwest Territories

TYPICAL DETAIL DRAWING
EXPANSION BEARINGS

DESIGNED	K. HABEL	DATE	OCTOBER 25, 2024
CHECKED	K. WILLIS	DATE	OCTOBER 25, 2024
DRAWN	T. CHIU	DATE	OCTOBER 25, 2024
SCALE	AS SHOWN		

PROJECT No.	PREPARED UNDER THE DIRECTION OF
	K. HABEL
	ENGINEER OF RECORD
	DATE OCTOBER 25, 2024
	DRAWING No.
	T-002

CANCEL PRINTS BEARING PREVIOUS LETTER