

1991 NWT Traffic Collision Facts

Department of Transportation
Road Licensing and Safety Division
May, 2001

Acknowledgements

This report was prepared by the Road Licensing and Safety Division of the Department of Transportation, Government of the Northwest Territories, in cooperation with the Transportation Planning Division.

If you have any comments or questions related to the content of this report, please contact the Road Licensing and Safety Division at telephone (867) 920-3395, or by facsimile at (867) 873-0120.

1991 QUICK FACTS REPORT

1991 Compared to 1990

	<u>1990</u>	<u>1991</u>	<u>% Change</u>
PROPERTY DAMAGE ONLY COLLISIONS	675	712	5.5
PERSONAL INJURY COLLISIONS	139	171	23.0
FATAL COLLISIONS	7	3	-57.1
TOTAL REPORTED COLLISIONS	821	886	7.9
NUMBER OF PERSONS KILLED	9	3	-66.7
NUMBER OF PERSONS INJURED	199	246	23.6
NWT HIGHWAY SYSTEM COLLISIONS	174	217	24.7
RURAL COLLISIONS	14	4	-71.4
COLLISIONS IN COMMUNITIES	633	665	5.1
REGISTERED VEHICLES	20,793	19,471	-6.4
LICENSED DRIVERS	17,418	18,585	6.7
NWT POPULATION [1]	38,200	38,700	1.3
COLLISIONS PER 100 LICENSED DRIVERS	4.71	4.77	1.1
COLLISIONS PER 100 REGISTERED VEHICLES	3.95	4.55	15.2
COLLISIONS PER 100 POPULATION	2.15	2.29	6.5
COLLISIONS INVOLVING ALCOHOL	87	86	-1.1

[1] 1990 and 1991 population from NWT Bureau of Statistics July 1 estimate published in 'Quarterly Report', March 1992.

Introduction

The Traffic Collision Information System (TCIS) is a computer-based system that compiles information on traffic collisions occurring throughout the Northwest Territories. This information is obtained from the motor vehicle collision (MVA) report form that is completed by Royal Canadian Mounted Police detachments in accordance with Section 262 of the Motor Vehicles Act.

TCIS provides valuable information for many traffic collision countermeasure programs. TCIS, the MVA report form, and various collision publications are administered by the GNWT Department of Transportation, Road Licensing and Safety Division. The collection of this valuable data is made possible by the efforts and dedication of the many Royal Canadian Mounted Police officers across the Northwest Territories who complete MVA forms from their collision investigations.

TCIS Definitions

REPORTABLE MOTOR VEHICLE COLLISION - an incident involving one or more motor vehicles resulting in death, personal injury or a minimum of \$1,000 in property damage. TCIS only records reportable motor vehicle collisions which occur on or adjacent to roadways intended for use by the general public. The following is a list of words and terms used in reportable collisions:

INCIDENT - Any set of events not under human control which includes at least one occurrence of injury or damage. It originates when human control is lost and terminates when control is regained, or in the absence of persons who are able to regain control when all persons and property are at rest.

Excluded are events which are known to be the result of deliberate intent, legal intervention or natural disasters. As an example, if a vehicle catches fire due to mechanical failure and the driver is able to stop the car, this is not a traffic collision because control of the vehicle was never lost.

VEHICLE - is any vehicle designed to travel on land that is drawn, propelled or driven by any kind of power, including muscular power, but does not include a device designed to run exclusively on rails.

MOTOR VEHICLE - is a vehicle propelled or driven by power other than by wind, gravity or muscular power and includes a trailer, but does not include:

- (a) an aircraft or a marine vehicle,
- (b) a device that runs or is designed to run exclusively on rails,

- (c) a mechanically propelled wheelchair or mobility device.

PEDESTRIAN - is a person on foot, in a wheelchair or mobility device and includes a child in a carriage or carried by a person on foot, persons on ice skates, skis, roller blades, skate boards and persons pushing or pulling vehicles. A pedestrian does NOT include persons jumping or falling from a vehicle in motion.

DAMAGE - harm to property that reduces the monetary value of that property. It includes harm to animals that have monetary value. It excludes mechanical failure incurred by normal operation such as a tire blow out or broken fan belt.

ROADWAY - any highway, secondary road, rural road, street, avenue, parkway, lane, alley or bridge designed and intended for or used by the general public for the passage of vehicles and pedestrians. This includes sidewalks, boulevards and the immediate right-of-way adjacent to and parallel with the roadway. It also includes winter/ice roads, trails, privately maintained roads, driveways and parking lots on which the general public may travel.

PROPERTY DAMAGE ONLY COLLISION (Property Damage) - a motor vehicle collision resulting in total damages over the prescribed amount as defined in the Motor Vehicles Act (\$1,000) with no personal injuries or deaths.

TRAFFIC INJURY COLLISION (Personal Injury) - a motor vehicle collision resulting in a non-fatal injury to one or more persons. An injury is defined as any bodily harm resulting from the collision.

TRAFFIC FATALITY COLLISION (Fatal) - a motor vehicle collision resulting in death within 30 days to one or more involved persons. Death must be the result of injuries incurred from the collision. This excludes death from natural causes such as heart attacks.

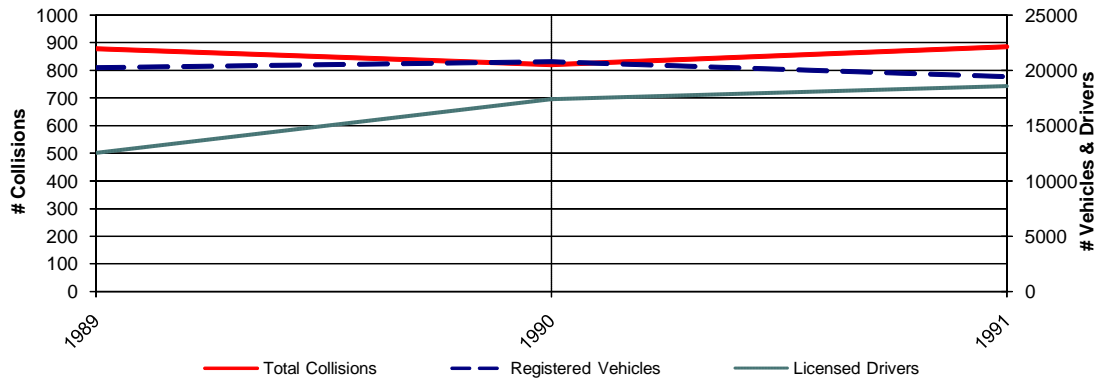
		Page
	Quick Facts - Inside Front Cover	
<u>Section 1</u>	<u>Three-Year Trends</u>	1
Figure 1.1	Trends in Licensed Drivers, Registered Vehicles and Collisions	1
1.2	Trends in Collision Rates by Vehicles, Drivers and Population	1
1.3	Trends in Injuries and Fatalities	2
1.4	Trends in Property Damage Collisions	2
1.5	Trends in Personal Injury Collisions	3
1.6	Trends in Fatal Collisions	3
1.7	Trends in All Reported Collisions	4
1.8	Property Damage Collisions by Month and Year	4
1.9	Personal Injury Collisions by Month and Year	5
1.10	Fatal Collisions by Month and Year	5
1.11	Total Collisions by Month and Year	6
<u>Section 2</u>	<u>Time of Occurrence</u>	7
Figure 2.1	Personal Injury Collisions by Month of Occurrence	7
2.2	Fatal Collisions by Month of Occurrence	7
2.3	Total Collisions by Month of Occurrence	7
2.4	Collisions and Victims by Month of Occurrence	7
2.5	Total Collisions by Time of Day	7
2.6	Total Collisions by Day of Week	7
2.7	Total Collisions by Time of Day and Day of Week	8
<u>Section 3</u>	<u>Major Contributing Factors</u>	9
Figure 3.1	Collision by Severity Where Human Condition Was a Major Contributing Factor	9
3.2	Collisions by Severity Where Human Action Was a Major Contributing Factor	9
3.3	Collisions by Severity Where Vehicle Condition Was a Major Contributing Factor	9
3.4	Collisions by Severity Where Environmental Condition Was a Major Contributing Factor	10
3.5	Collisions by Severity Where Major Contributing Factor Was Unspecified or Unknown	10
3.6	Major Contributing Factors by Collision Severity	10
3.7	Collisions by Road System Where Human Condition Was a Major Contributing Factor	11
3.8	Collisions by Road System Where Human Action Was a Major Contributing Factor	11
3.9	Collisions by Road System Where Vehicle Condition Was a Major Contributing Factor	11
3.10	Collisions by Road System Where Environmental Condition Was a Major Contributing Factor	12
3.11	Collisions by Road System Where Major Contributing Factor Was Unspecified or Unknown	12
3.12	Major Contributing Factors in Collisions - Communities and NWT Highways	12

		Page
<u>Section 4</u>	<u>Environmental Factors</u>	13
Figure	4.1 Collisions by Road Surface Type and Severity	13
	4.2 Collisions by Road Surface Environmental Condition and Severity	13
	4.3 Collisions by Road Defect and Severity	14
	4.4 Collisions by Light Condition and Severity	14
	4.5 Collisions by Weather Condition and Severity	15
	4.6 Collisions by Configuration and Severity	16
	4.7 Collisions by Configuration and Road System	17
	4.8 Collisions by Collision Site and Severity	18
	4.9 Collisions by Collision Site and Road System	18
	4.10 Collisions by Roadway Alignment and Severity	18
	4.11 Collisions by Roadway Type and Severity	19
	4.12 Collisions by Sequence of Events and Severity	19
	4.13 Collisions by Sequence of Events and Road System	20
<u>Section 5</u>	<u>Driver Factors</u>	21
Figure	5.1 Drivers in Collisions and Relative Risk by Driver Age	21
	5.2 Collision Rates by Severity and Driver Age	21
	5.3 Number of Drivers in Collisions by Licence Class and Age	22
	5.4 Number of Drivers in Collisions by Driver Condition and Age	22
	5.5 Number of Drivers in Collisions by Driver Action and Age	23
<u>Section 6</u>	<u>Vehicle Factors</u>	24
Figure	6.1 Number of Vehicles in Collisions by Vehicle Type and Severity	24
	6.2 Number of Vehicles in Collisions by Vehicle Condition and Severity	24
	6.3 Number of Vehicles in Collisions by Vehicle Manoeuvre and Severity	25
	6.4 Number of Vehicles in Collisions by Vehicle Year and Severity	25
<u>Section 7</u>	<u>Victims and Occupant Restraints</u>	26
Figure	7.1 Fatalities Classification	26
	7.2 Injuries Classification	26
	7.3 Persons Injured by Road User Class and Age Group	27
	7.4 Persons Killed by Road User Class and Age Group	27
	7.5 Persons Injured or Killed by Road User Class and Gender	27
	7.6 Motor Vehicle Occupants by Injury Severity and Restraint Use	28
	7.7 Restraints Used/Not Used	28
	7.8 Motor Vehicle Occupants by Injury Severity and Age Group	29
	7.9 Victim Restraint Use Rate by Victim Age	29

		Page
<u>Section 8</u>	<u>Pedestrians</u>	30
Figure	8.1 Pedestrians Injured or Killed by Age Group	30
	8.2 Pedestrians Injured or Killed by Pedestrian Action and Age Group	30
	8.3 Pedestrians Injured or Killed by Place of Occurrence and Injury Severity	30
	8.4 Pedestrians Injured or Killed by Collision Site	31
	8.5 Pedestrians Injured or Killed by Pedestrian Condition	31
<u>Section 9</u>	<u>Alcohol</u>	32
Figure	9.1 Drinking Drivers in Collisions by Driver Age and Gender	32
	9.2 Collisions Involving Alcohol by Day of Week	32
	9.3 Percentage of Collisions Involving Alcohol by Year and Severity	32
	9.4 Number of Collisions and Victims Involving Alcohol	32
	9.5 Number of Alcohol Related Collisions by Time of Day	33
	9.6 Injury Severity by Alcohol Involvement	33
	9.7 Alcohol-Involved Collisions by Month	33
<u>Section 10</u>	<u>Off-Road Vehicles</u>	34
Figure	10.1 Off-Road Vehicle Collisions by Month and Severity	34
	10.2 Off-Road Vehicle Collisions by Vehicle Type	34
	10.3 Off-Road Vehicle Drivers in Collisions by Driver Age & Gender	35
	10.4 Off-Road Vehicle Drivers in Collisions by Driver Condition and Severity	35
	10.5 Off-Road Vehicle Drivers in Collisions by Driver Action & Severity	36
	10.6 Off-Road Vehicle Occupants by Injury Severity and Helmet Use	36
<u>Section 11</u>	<u>Geographic Distribution</u>	37
Figure	11.1 Collisions by Region, RCMP Detachment and Severity	37
	11.2 Collision Rates by Region and RCMP Detachment	38
	11.3 Collisions on the NWT Highway System	39
	11.4 Collisions on the NWT Highway System - Map	44
<u>Appendix</u>		45
Section	A1 Northwest Territories Motor Vehicle Collision (MVA) Report Form	45
	A2 Northwest Territories MVA Report Form Template	46
	A3 Brief Description of Fatal Collisions	47

Trends in Licensed Drivers, Registered Vehicles and Collisions

Figure 1.1

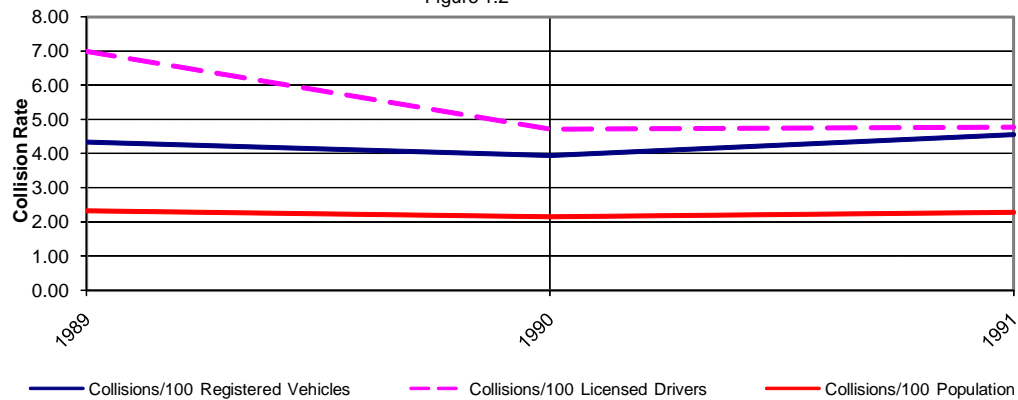


3 Year Summary

	1989	1990	1991	% Change
Registered Vehicles	20,257	20,793	19,471	-6.4
Licensed Drivers	12,579	17,418	18,585	6.7
Total Collisions	879	821	886	7.9

Trends in Collision Rates by Vehicles, Drivers and Population

Figure 1.2

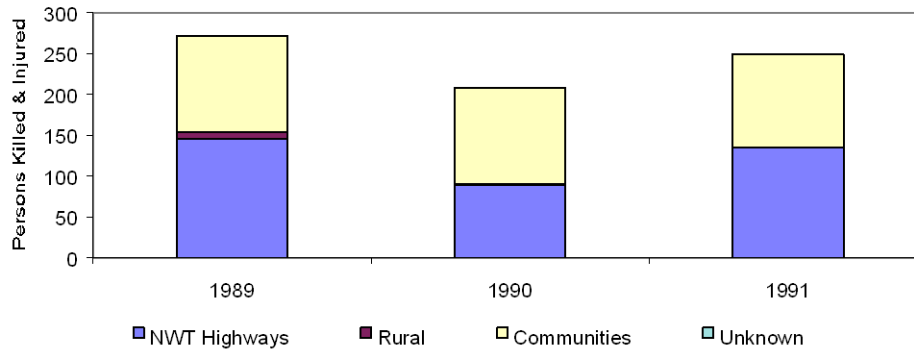


3 Year Summary

	1989	1990	1991	% Change
Collisions/100 Registered Vehicles	4.34	3.95	4.55	15.2
Collisions/100 Licensed Drivers	6.99	4.71	4.77	1.1
Collisions/100 Population	2.33	2.15	2.29	6.5

Trends in Injuries & Fatalities

Figure 1.3

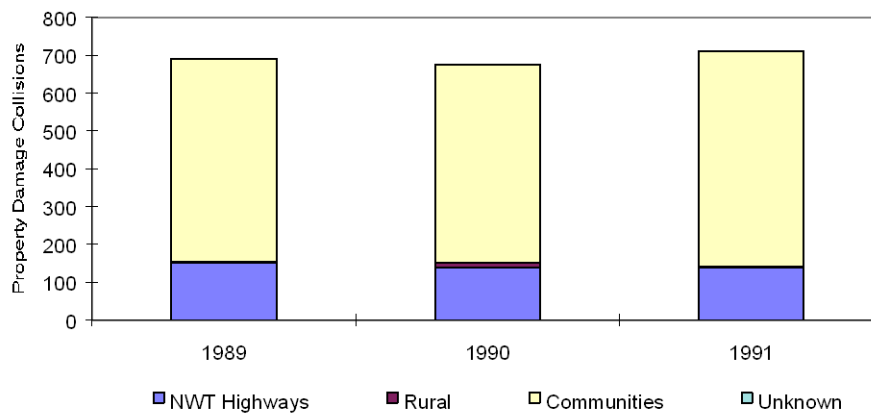


3 Year Summary

	Persons Injured				Persons Killed			
	1989	1990	1991	% Change	1989	1990	1991	% Change
NWT Highways	149	77	132	71.4	6	4	3	-25.0
Rural	2	2	0	-100.0	0	0	0	-
Communities	112	120	114	-5.0	2	5	0	-100.0
Total	263	199	246	23.6	8	9	3	-66.7

Trends in Property Damage Collisions

Figure 1.4

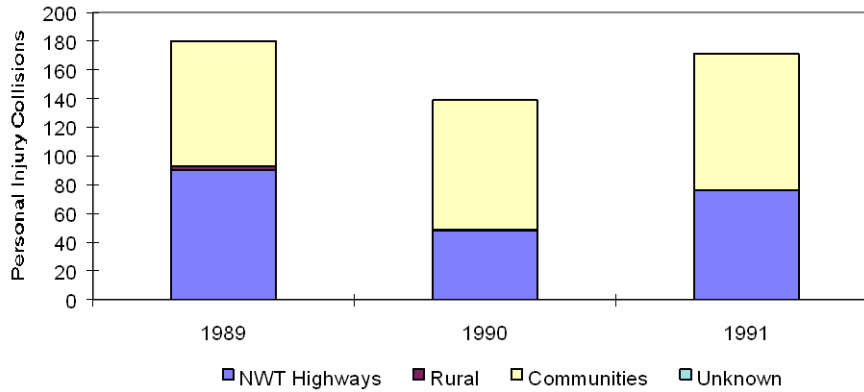


3 Year Summary

	Property Damage Collisions			
	1989	1990	1991	% Change
NWT Highways	154	126	138	9.5
Rural	4	12	4	-66.7
Communities	533	537	570	6.1
Total	691	675	712	5.5

Trends in Personal Injury Collisions

Figure 1.5

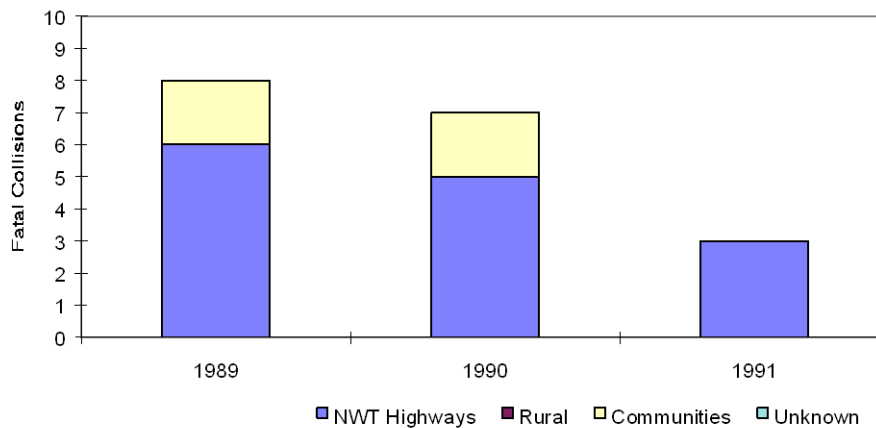


3 Year Summary

	Personal Injury Collisions			
	1989	1990	1991	% Change
NWT Highways	93	44	76	72.7
Rural	2	2	0	-100.0
Communities	85	93	95	2.2
Total	180	139	171	23.0

Trends in Fatal Collisions

Figure 1.6

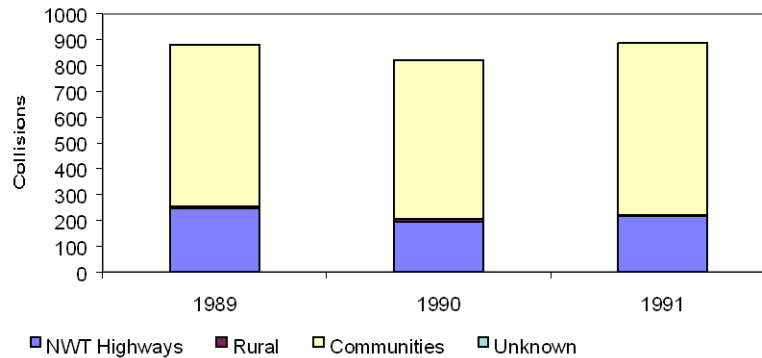


3 Year Summary

	Fatal Collisions			
	1989	1990	1991	% Change
NWT Highways	6	4	3	-25.0
Rural	0	0	0	-
Communities	2	3	0	-100.0
Total	8	7	3	-57.1

Trends in All Reported Collisions

Figure 1.7



3 Year Summary

	1989	1990	1991	% Change
NWT Highways	253	174	217	24.7
Rural	6	14	4	-71.4
Communities	620	633	665	5.1
Total	879	821	886	7.9

Property Damage Collisions by Month and Year

Figure 1.8

Month	1989	1990	Avg. 89 to 90	1991	% Change*
January	66	63	65	86	33.3
February	66	66	66	72	9.1
March	65	68	67	72	8.3
April	51	30	41	48	18.5
May	39	29	34	31	-8.8
June	39	44	42	57	37.3
July	47	51	49	57	16.3
August	47	54	51	42	-16.8
September	41	46	44	49	12.6
October	76	69	73	65	-10.3
November	84	71	78	59	-23.9
December	70	84	77	74	-3.9
Total	691	675	683	712	4.2

* % change is a comparison between 1991 and the 1989-90 average.

Personal Injury Collisions by Month and Year

Figure 1.9

	Avg. 89				
Month	1989	1990	to 90	1991	% Change*
January	13	8	11	15	42.9
February	17	8	13	13	4.0
March	14	15	15	17	17.2
April	3	6	5	5	11.1
May	11	5	8	16	100.0
June	12	20	16	24	50.0
July	26	20	23	23	0.0
August	17	14	16	16	3.2
September	16	8	12	13	8.3
October	18	15	17	14	-15.2
November	19	7	13	5	-61.5
December	14	13	14	10	-25.9
Total	180	139	160	171	7.2

Fatal Collisions by Month and Year

Figure 1.10

	Avg. 89				
Month	1989	1990	to 90	1991	% Change*
January	0	1	0.5	0	-100.0
February	0	0	0.0	0	-
March	0	0	0.0	0	-
April	1	1	1.0	0	-100.0
May	1	0	0.5	0	-100.0
June	3	0	1.5	2	33.3
July	1	2	1.5	0	-100.0
August	0	0	0.0	1	-
September	0	0	0.0	0	-
October	0	2	1.0	0	-100.0
November	1	0	0.5	0	-100.0
December	1	1	1.0	0	-100.0
Total	8	7	7.5	3	-60.0

* % change is a comparison between 1991 and the 1989-90 average.

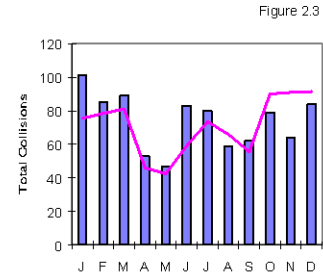
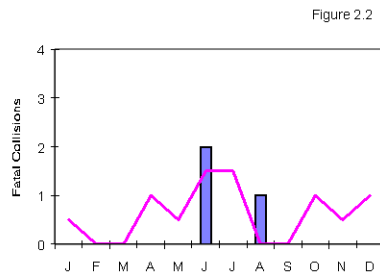
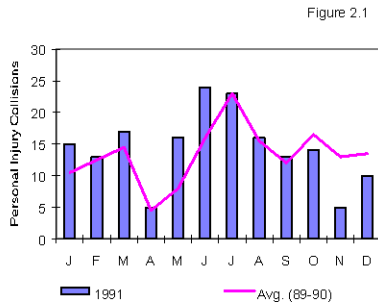
Total Collisions by Month and Year

Figure 1.11

Month	1989	1990	Avg. 89 to 90	1991	% Change*
January	79	72	76	101	33.8
February	83	74	79	85	8.3
March	79	83	81	89	9.9
April	55	37	46	53	15.2
May	51	34	43	47	10.6
June	54	64	59	83	40.7
July	74	73	74	80	8.8
August	64	68	66	59	-10.6
September	57	54	56	62	11.7
October	94	86	90	79	-12.2
November	104	78	91	64	-29.7
December	85	98	92	84	-8.2
Total	879	821	850	886	4.2

* % change is a comparison between 1991 and the 1989-90 average.

Collisions by Month of Occurrence

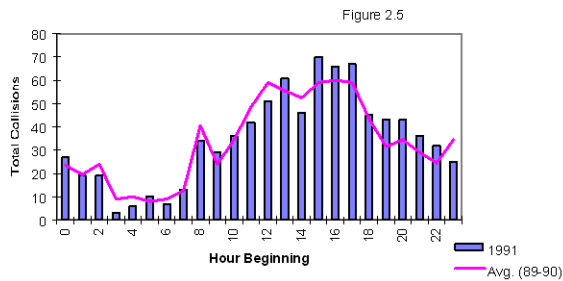


Collisions & Victims by Month of Occurrence

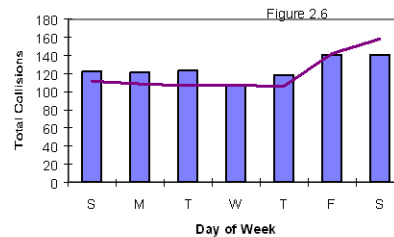
Figure 2.4

Month	Number of Collisions				Number of Victims	
	Property Damage	Personal Injury	Fatal	Total	Injured	Killed
January	86	15	0	101	21	0
February	72	13	0	85	21	0
March	72	17	0	89	21	0
April	48	5	0	53	8	0
May	31	16	0	47	22	0
June	57	24	2	83	39	2
July	57	23	0	80	39	0
August	42	16	1	59	20	1
September	49	13	0	62	21	0
October	65	14	0	79	18	0
November	59	5	0	64	6	0
December	74	10	0	84	10	0
Total	712	171	3	886	246	3

Total Collisions by Time of Day



Total Collisions by Day of Week



Time of Occurrence – Section 2

Collisions by Time of Day & Day of Week*

Figure 2.7

Collision Hour	Sunday	Monday	Tuesday	Wednesday	Thursday	Friday	Saturday	Total	%
12 to 1 a.m.	9	2	3	2	6	3	2	27	3.1
1 to 2 a.m.	7	1	0	0	4	1	6	19	2.2
2 to 3 a.m.	10	1	1	1	3	0	3	19	2.2
3 to 4 a.m.	1	0	0	0	1	0	1	3	0.3
4 to 5 a.m.	2	1	0	0	1	0	2	6	0.7
5 to 6 a.m.	4	0	0	1	0	3	2	10	1.1
6 to 7 a.m.	3	0	0	1	1	1	1	7	0.8
7 to 8 a.m.	1	4	1	2	0	1	4	13	1.5
8 to 9 a.m.	2	7	5	7	5	7	1	34	3.9
9 to 10 a.m.	5	3	5	4	4	4	4	29	3.3
10 to 11 a.m.	4	7	8	3	6	3	4	35	4.0
11 to 12 a.m.	5	4	7	10	5	6	5	42	4.8
12 to 1 p.m.	2	14	8	6	5	9	7	51	5.8
1 to 2 p.m.	5	9	7	10	8	10	12	61	7.0
2 to 3 p.m.	3	5	5	9	9	9	6	46	5.3
3 to 4 p.m.	13	12	9	8	11	7	10	70	8.0
4 to 5 p.m.	10	8	11	6	7	13	9	64	7.3
5 to 6 p.m.	3	9	7	11	9	12	16	67	7.7
6 to 7 p.m.	8	2	7	7	3	11	7	45	5.1
7 to 8 p.m.	3	7	9	2	7	7	8	43	4.9
8 to 9 p.m.	1	4	9	3	5	12	9	43	4.9
9 to 10 p.m.	1	6	9	1	9	3	6	35	4.0
10 to 11 p.m.	7	3	5	4	4	7	2	32	3.7
11 to 12 p.m.	3	3	2	6	2	4	5	25	2.9
Not Stated	10	9	5	4	3	8	9	48	5.5
Total	122	121	123	108	118	141	141	874	
%	14.0	13.8	14.1	12.4	13.5	16.1	16.1	100.0	

* Excludes collisions in which Day of Week was unknown.

Major Contributing Factors – Section 3

Collisions by Severity Where Human Condition Was a Major Contributing Factor

Figure 3.1

Human Condition	Property Damage	Personal Injury	Fatal	% of Total	
				Total	Factors
Fatigued, Fell Asleep	3	3	0	6	0.7
Inexperience	0	0	0	0	0.0
Under Influence - Alcohol	14	15	2	31	3.5
Under Influence - Drugs	0	0	0	0	0.0
Sudden Illness, Lost Consciousness	0	0	0	0	0.0
Other Driver Condition	0	0	0	0	0.0
Total	17	18	2	37	4.2

Collisions by Severity Where Human Action Was a Major Contributing Factor

Figure 3.2

Human Action	Property Damage	Personal Injury	Fatal	% of Total	
				Total	Factors
Following Too Closely	39	8	0	47	5.3
Distracted, Inattentive	0	0	0	0	0.0
Driving Too Fast for Conditions	59	19	0	78	8.8
Improper Turning or Passing	22	3	0	25	2.8
Failed to Yield Right-of-Way	60	25	0	85	9.6
Disobeyed Traffic Control/Officer	6	2	0	8	0.9
Driving on Wrong Side of Road	8	1	0	9	1.0
Driving in Wrong Direction	0	0	0	0	0.0
Backing Unsafely	129	4	0	133	15.0
Lost Control	138	43	1	182	20.5
Other Driver Action	0	0	0	0	0.0
Total	461	105	1	567	64.0

Collisions by Severity Where Vehicle Condition Was a Major Contributing Factor

Figure 3.3

Vehicle Condition	Property Damage	Personal Injury	Fatal	% of Total	
				Total	Factors
Defective Brakes	5	1	0	6	0.7
Defective Steering	0	0	0	0	0.0
Defective Lights	2	1	0	3	0.3
Tire Blown Out	3	5	0	8	0.9
Unsecured Load, Spilled Load	1	0	0	1	0.1
Oversized Load, Overload	1	0	0	1	0.1
Visibility Obstructed	6	1	0	7	0.8
Other Vehicle Contributing Factor	18	2	0	20	2.3
Total	36	10	0	46	5.2

Major Contributing Factors – Section 3

Collisions by Severity Where Environmental Condition Was a Major Contributing Factor

Figure 3.4

Environmental Condition	Property Damage	Personal Injury	Fatal	% of Total	
				Total	Factors
Animal on Roadway	13	2	0	15	1.7
Road Surface or Condition	16	6	0	22	2.5
Obstruction/Debris on Road	0	0	0	0	0.0
View Obstructed, Glare, Reflection	5	6	0	11	1.2
Weather or Other Acts of God	14	5	0	19	2.1
Other Environmental Factor	0	0	0	0	0.0
Total	48	19	0	67	7.6

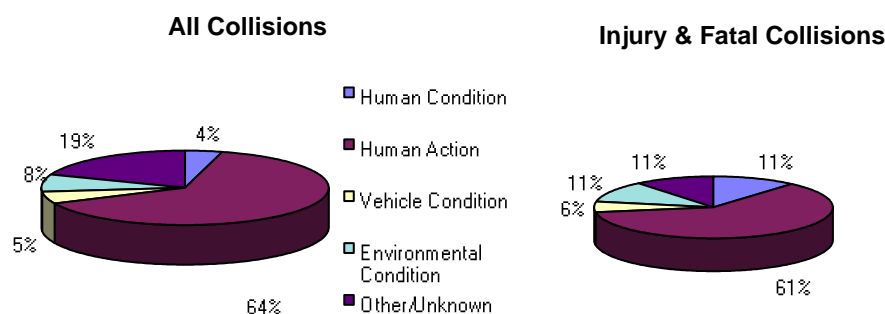
Collisions by Severity Where Major Contributing Factor Was Unspecified or Unknown

Figure 3.5

Factor	Property Damage	Personal Injury	Fatal	% of Total	
				Total	Factors
Unspecified	27	19	0	46	5.2
Unknown	123	0	0	123	13.9
Total	150	19	0	169	19.1
Total All Factors	712	171	3	886	100.0

Major Contributing Factors by Collision Severity

Figure 3.6



TAIS recognizes that a collision is usually the result of a chain of events. The collision data system accepts up to four contributing factors for each vehicle involved in a collision. During the analysis of collisions, knowledge of the factors is important. By removing any one of the factors, the collision may be avoided.

An example: Because of inattention, a driver may have failed to see a stop sign behind some trees and thereby reduced his/her stopping time. The car's brakes, being in poor condition, caused the car to spin out of control on ice and collide with another vehicle that was speeding through the intersection. The collision may not have occurred if any of these factors were not present.

Major Contributing Factors – Section 3

Collisions by Road System Where Human Condition Was a Major Contributing Factor

Figure 3.7

Human Condition	NWT			% of Total	
	Highways	In Communities	Rural	Total	Factors
Fatigued, Fell Asleep	6	0	0	6	0.7
Inexperience	0	0	0	0	0.0
Under Influence - Alcohol	11	20	0	31	3.5
Under Influence - Drugs	0	0	0	0	0.0
Sudden Illness, Lost Consciousness	0	0	0	0	0.0
Other Driver Condition	0	0	0	0	0.0
Total	17	20	0	37	4.2

Collisions by Road System Where Human Action Was a Major Contributing Factor

Figure 3.8

Human Action	NWT			% of Total	
	Highways	In Communities	Rural	Total	Factors
Following Too Closely	10	37	0	47	5.3
Distracted, Inattentive	0	0	0	0	0.0
Driving Too Fast for Conditions	19	59	0	78	8.8
Improper Turning or Passing	2	23	0	25	2.8
Failed to Yield Right-of-Way	6	79	0	85	9.6
Disobeyed Traffic Control/Officer	1	7	0	8	0.9
Driving on Wrong Side of Road	5	4	0	9	1.0
Driving in Wrong Direction	0	0	0	0	0.0
Backing Unsafely	1	131	1	133	15.0
Lost Control	95	85	2	182	20.5
Other Driver Action	0	0	0	0	0.0
Total	139	425	3	567	64.0

Collisions by Road System Where Vehicle Condition Was a Major Contributing Factor

Figure 3.9

Vehicle Condition	NWT			% of Total	
	Highways	In Communities	Rural	Total	Factors
Defective Brakes	1	5	0	6	0.7
Defective Steering	0	0	0	0	0.0
Defective Lights	3	0	0	3	0.3
Tire Blown Out	8	0	0	8	0.9
Unsecured Load, Spilled Load	1	0	0	1	0.1
Oversized Load, Overload	0	1	0	1	0.1
Visibility Obstructed	0	7	0	7	0.8
Other Vehicle Contributing Factor	2	18	0	20	2.3
Total	15	31	0	46	5.2

Major Contributing Factors – Section 3

Collisions by Road System Where Environmental Condition Was a Major Contributing Factor

Figure 3.10

<u>Environmental Condition</u>	<u>NWT</u>			<u>% of Total</u>	
	<u>Highways</u>	<u>In Communities</u>	<u>Rural</u>	<u>Total</u>	<u>Factors</u>
Animal on Roadway	14	1	0	15	1.7
Road Surface or Condition	10	12	0	22	2.5
Obstruction/Debris on Road	0	0	0	0	0.0
View Obstructed, Glare, Reflection	4	6	1	11	1.2
Weather or Other Acts of God	8	11	0	19	2.1
Other Environmental Factor	0	0	0	0	0.0
Total	36	30	1	67	7.6

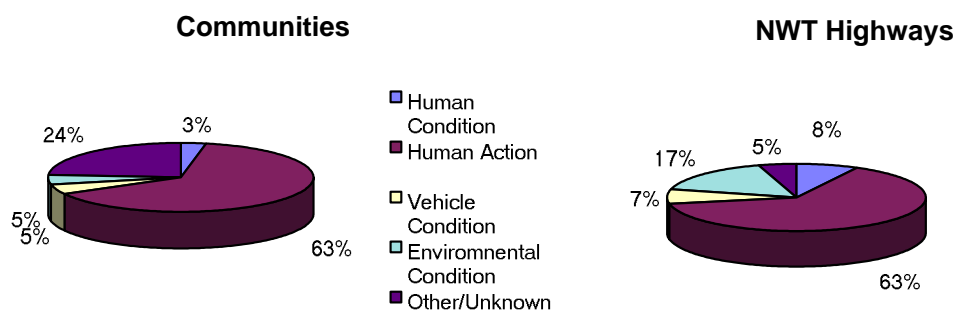
Collisions by Road System Where Major Contributing Factor Was Unspecified or Unknown

Figure 3.11

<u>Factor</u>	<u>NWT</u>			<u>% of Total</u>	
	<u>Highways</u>	<u>In Communities</u>	<u>Rural</u>	<u>Total</u>	<u>Factors</u>
Unspecified	5	41	0	46	5.2
Unknown	5	118	0	123	13.9
Total	10	159	0	169	19.1
Total All Factors	217	665	4	886	100.0

Major Contributing Factors in Collisions - Communities and NWT Highways

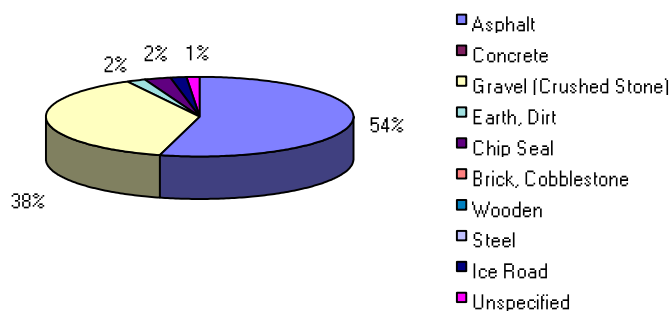
Figure 3.12



Collisions by Road Surface Type and Severity

Figure 4.1

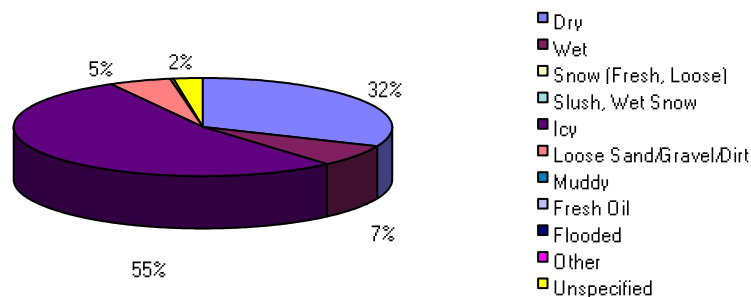
Road Surface Type	Property Damage	Personal Injury	Fatal	Total	%
Asphalt	412	66	1	479	54.1
Concrete	2	0	0	2	0.2
Gravel (Crushed Stone)	249	85	2	336	37.9
Earth, Dirt	14	4	0	18	2.0
Chip Seal	14	9	0	23	2.6
Brick, Cobblestone	0	0	0	0	0.0
Wooden	0	0	0	0	0.0
Steel	0	0	0	0	0.0
Ice Road	8	7	0	15	1.7
Unspecified	13	0	0	13	1.5
Total	712	171	3	886	100.0



Collisions by Road Surface Environmental Condition and Severity

Figure 4.2

Surface Condition	Property Damage	Personal Injury	Fatal	Total	%
Dry	209	67	2	278	31.4
Wet	46	18	0	64	7.2
Snow (Fresh, Loose)	0	0	0	0	0.0
Slush, Wet Snow	0	0	0	0	0.0
Icy	405	67	0	472	53.3
Loose Sand/Gravel/Dirt	29	18	1	48	5.4
Muddy	0	0	0	0	0.0
Fresh Oil	0	1	0	1	0.1
Flooded	0	0	0	0	0.0
Other	2	0	0	2	0.2
Unspecified	21	0	0	21	2.4
Total	712	171	3	886	100



Collisions by Road Defect and Severity

Figure 4.3

Road Defect	Property Damage	Personal Injury	Fatal	Total	%
No Defects	310	81	3	394	44.5
Potholes/Bumps/Ruts	56	28	0	84	9.5
Under Repair, Construction	15	4	0	19	2.1
Uneven Pavement Surface	0	0	0	0	0.0
Worn	0	0	0	0	0.0
Obscured or Faded Markings	0	0	0	0	0.0
Other	297	57	0	354	40.0
Unspecified	34	1	0	35	4.0
Total	712	171	3	886	100.0

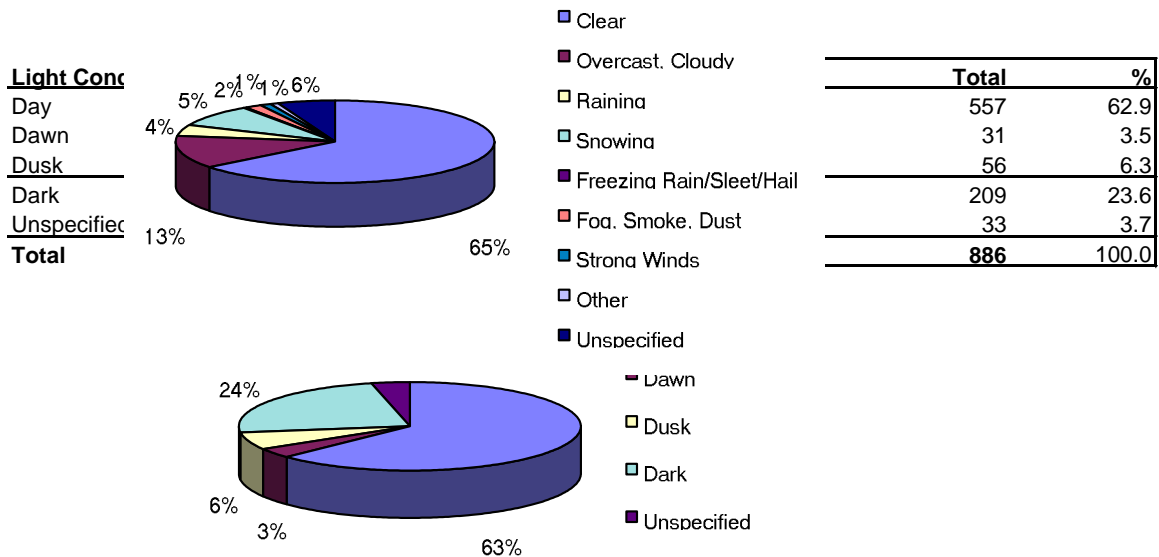
Collisions by Weather Condition and Severity

Figure 4.5

Weather Condition	Property Damage	Personal Injury	Fatal	Total	%
Clear (Sunny)	456	10	0	572	64.6
Overcast, Cloudy (No Precipitation)	82	2	1	113	12.8
Raining	29	10	0	39	4.4
Snowing	68	8	0	76	8.6
Freezing Rain/Sleet/Hail	2	0	0	2	0.2
Visibility Limitations (fog, dust, etc.)	12	3	0	15	1.7
Strong Winds	7	4	0	11	1.2
Other	5	1	0	6	0.7
Unspecified	51	1	0	52	5.9
Total	712	171	3	886	100.0

Collisions by Light Condition and Severity

Figure 4.4

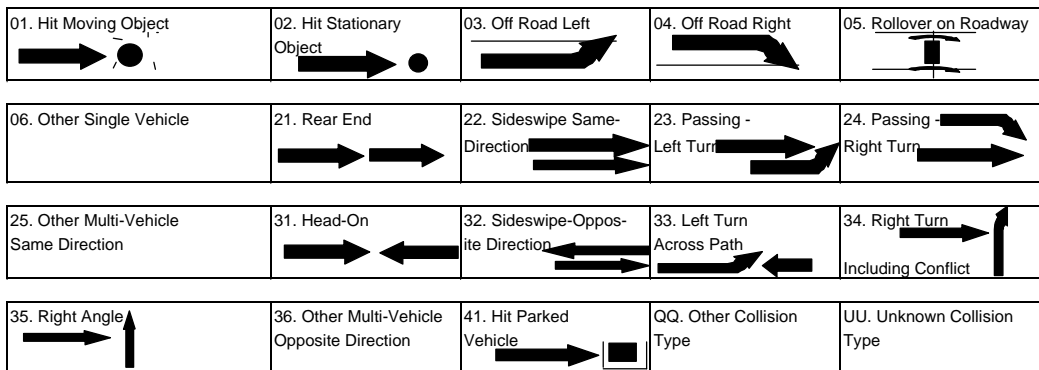


Collisions by Configuration and Severity

Figure 4.6

Configuration*	Property Damage	Personal Injury	Fatal	Total	% of Total
01. Hit Moving Object					
a) With Animal	12	3	0	15	1.7
b) With Pedestrian	2	34	0	36	4.1
c) Other	0	0	0	0	0.0
02. Hit Stationary Object	52	6	0	58	7.8
03. Off Road Left					
a) With Rollover	14	11	1	26	2.9
b) No Rollover	20	5	1	26	2.9
04. Off Road Right					
a) With Rollover	37	37	1	75	8.5
b) No Rollover	28	11	0	39	4.4
05. Rollover on Roadway	4	5	0	9	1.0
06. Other Single Vehicle	5	0	0	5	0.6
21. Rear End	85	13	0	98	11.1
22. Sideswipe - Same Direction	9	2	0	11	1.2
23. Passing - Left Turn	8	3	0	11	1.2
24. Passing - Right Turn	3	0	0	3	0.3
25. Other Multi-Vehicle Same Direction	0	0	0	0	0.0
31. Head-On	4	5	0	9	1.0
32. Sideswipe - Opposite Direction	25	6	0	31	3.5
33. Left Turn Across Path	9	3	0	12	1.4
34. Right Turn Including Conflict	2	1	0	3	0.3
35. Right Angle	88	16	0	104	11.7
36. Other Multi-Vehicle Opposite Direction	39	1	0	40	4.5
41. Hit Parked Vehicle	264	7	0	271	30.6
QQ. Other Collision Type	0	2	0	2	0.2
UU. Unknown Collision Type	2	0	0	2	0.2
Total	712	171	3	886	100.0

***Collision Configurations**



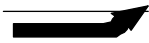


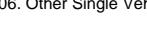
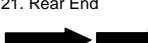
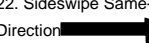
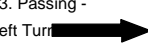
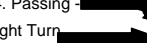
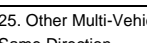
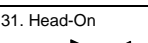
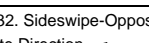
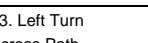
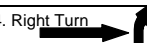
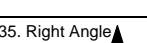
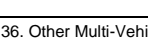
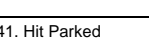
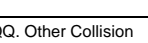
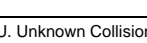


Collisions by Configuration and Road System

Figure 4.7

Configuration*	NWT Highways	In Communities	Rural	Total	% of Total
01. Hit Moving Object					
a) With Animal	14	1	0	15	1.7
b) With Pedestrian	1	35	0	36	4.1
c) Other	0	0	0	0	0.0
02. Hit Stationary Object	10	48	0	58	6.5
03. Off Road Left					
a) With Rollover	22	4	0	26	2.9
b) No Rollover	15	11	0	26	2.9
04. Off Road Right					
a) With Rollover	63	12	0	75	8.5
b) No Rollover	33	6	0	39	4.4
05. Rollover on Roadway	5	3	1	9	1.0
06. Other Single Vehicle	1	4	0	5	0.6
21. Rear End	12	86	0	98	11.1
22. Sideswipe - Same Direction	2	9	0	11	1.2
23. Passing - Left Turn	2	9	0	11	1.2
24. Passing - Right Turn	0	3	0	3	0.3
25. Other Multi-Vehicle Same Direction	0	0	0	0	0.0
31. Head-On	4	5	0	9	1.0
32. Sideswipe - Opposite Direction	14	15	2	31	3.5
33. Left Turn Across Path	0	12	0	12	1.4
34. Right Turn Including Conflict	0	3	0	3	0.3
35. Right Angle	5	99	0	104	11.7
36. Other Multi-Vehicle Opposite Direction	6	34	0	40	4.5
41. Hit Parked Vehicle	6	264	1	271	30.6
QQ. Other Collision Type	1	1	0	2	0.2
UU. Unknown Collision Type	1	1	0	2	0.2
Total	217	665	4	886	100.0

***Collision Configurations**

01. Hit Moving Object 	02. Hit Stationary Object 	03. Off Road Left 	04. Off Road Right 	05. Rollover on Roadway 
06. Other Single Vehicle 	21. Rear End 	22. Sideswipe Same-Direction 	23. Passing - Left Turn 	24. Passing - Right Turn 
25. Other Multi-Vehicle Same Direction 	31. Head-On 	32. Sideswipe-Opposite Direction 	33. Left Turn Across Path 	34. Right Turn Including Conflict 
35. Right Angle 	36. Other Multi-Vehicle Opposite Direction 	41. Hit Parked Vehicle 	QQ. Other Collision Type 	UU. Unknown Collision Type 

Collisions by Collision Site and Severity

Figure 4.8

Collision Site	Property Damage	Personal Injury	Fatal	Total	%
Non-Intersection	268	112	3	383	43.2
Intersection - Two Public Roadways	138	33	0	171	19.3
Intersection - Parking Lot, Driveway	133	21	0	154	17.4
Railroad Level Crossing	1	0	0	1	0.1
Bridge, Overpass, Viaduct	0	1	0	1	0.1
Tunnel, Underpass	0	0	0	0	0.0
Passing, Climbing Lane	0	0	0	0	0.0
Ramp	2	1	0	3	0.3
Other	157	3	0	160	18.1
Unknown	13	0	0	13	1.5
Total	712	171	3	886	100.0

Collisions by Collision Site and Road System

Figure 4.9

Collision Site	NWT Highways	In Communities	Rural	Total	%
Non-Intersection	197	183	3	383	43.2
Intersection - Two Public Roadways	14	157	0	171	19.3
Intersection - Parking Lot, Driveway	5	149	0	154	17.4
Railroad Level Crossing	1	0	0	1	0.1
Bridge, Overpass, Viaduct	0	1	0	1	0.1
Tunnel, Underpass	0	0	0	0	0.0
Passing, Climbing Lane	0	0	0	0	0.0
Ramp	0	3	0	3	0.3
Other	0	159	1	160	18.1
Unknown	0	13	0	13	1.5
Total	217	665	4	886	100.0

Collisions by Roadway Alignment and Severity

Figure 4.10

Road Alignment	Property Damage	Personal Injury	Fatal	Total	%
Straight & Level	517	98	2	617	69.6
Straight with Grade	64	19	0	83	9.4
Curved and Level	57	28	0	85	9.6
Curve with Grade	29	13	1	43	4.9
Top of Hill or Grade	21	12	0	33	3.7
Bottom of Hill or Grade	0	0	0	0	0.0
Other	9	1	0	10	1.1
Unknown	15	0	0	15	1.7
Total	712	171	3	886	100.0

Collisions by Roadway Type and Severity

Figure 4.11

Road Type	Property Damage	Personal Injury	Fatal	Total	%
One-Way, Two Lane	6	2	0	8	0.9
One-Way, Multi Lane	0	0	0	0	0.0
Undivided, Two-Way, Two Lane	501	159	3	663	74.8
Undivided, Two-Way, Multi Lane	0	0	0	0	0.0
Divided, Barrier Median	15	3	0	18	2.0
Divided with Median, No Barrier	0	0	0	0	0.0
Divided, Divider Unspecified	8	2	0	10	1.1
Other	169	5	0	174	19.6
Unknown	13	0	0	13	1.5
Total	712	171	3	886	100.0

Collision Sequence of Events by Severity

Figure 4.12

Non-Moving Objects	Property Damage	Personal Injury	Fatal	Total	%
Hit Parked Trailer	0	0	0	0	0.0
Hit Non-Fixed Object	0	0	0	0	0.0
Hit Building	10	0	0	10	1.1
Hit Ditch	1	0	0	1	0.1
Hit Embankment, Dirt Pile, Rock	10	1	0	11	1.2
Hit Culvert End, Drainage Structure	0	0	0	0	0.0
Hit Tree, Bush, Hedge	4	1	0	5	0.6
Hit Utility Pole, Lamp Pole	13	1	0	14	1.6
Hit Curb	0	0	0	0	0.0
Hit Post	3	0	0	3	0.3
Hit Traffic Barrier	10	3	0	13	1.5
Hit Fixed Object Part of Road Structure	0	0	0	0	0.0
Hit Fixed Object NOT Part of Road Structure	0	0	0	0	0.0
Hit Other Type Fixed Object	1	0	0	1	0.1
Sub Total Fixed Objects	52	6	0	58	6.5
Moveable Objects					
Another Road Vehicle	536	57	0	593	66.9
Animal	12	3	0	15	1.7
Pedestrian	2	34	0	36	4.1
Other Moveable Object	0	0	0	0	0.0
Sub Total Moveable Objects	550	94	0	644	72.7
Non-Collision Events					
Ran Off Road	48	16	1	65	7.3
Rollover	55	53	2	110	12.4
Jack Knife or Trailer Swing	0	0	0	0	0.0
Fire or Explosion	5	0	0	5	0.6
Load Spill	0	0	0	0	0.0
Load Shift	0	0	0	0	0.0
Submersion	0	0	0	0	0.0
Other Non-Collision Event	0	0	0	0	0.0
Sub Total Non-Collision Events	108	69	3	180	20.3
Other/Unknown Event	2	2	0	4	0.5
Grand Total	712	171	3	886	100.0

Collision Sequence of Events by Road System

Figure 4.13

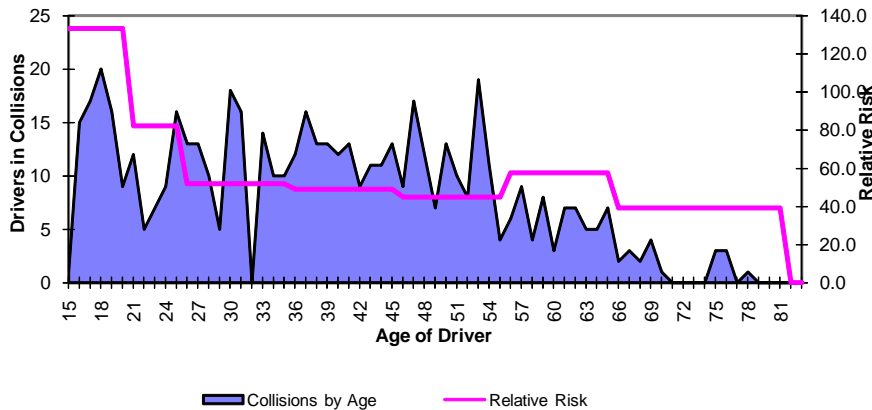
	NWT Highways	In Communities	Rural	Total	%
Non-Moving Objects					
Hit Parked Trailer	0	0	0	0	0.0
Hit Non-Fixed Object	0	0	0	0	0.0
Hit Building	0	10	0	10	1.1
Hit Ditch	1	0	0	1	0.1
Hit Embankment, Dirt Pile, Rock	5	6	0	11	1.2
Hit Culvert End, Drainage Structure	0	0	0	0	0.0
Hit Tree, Bush, Hedge	2	3	0	5	0.6
Hit Utility Pole, Lamp Pole	0	14	0	14	1.6
Hit Curb	0	0	0	0	0.0
Hit Post	0	3	0	3	0.3
Hit Traffic Barrier	2	11	0	13	1.5
Hit Fixed Object Part of Road Structure	0	0	0	0	0.0
Hit Fixed Object NOT Part of Road Structure	0	0	0	0	0.0
Hit Other Type Fixed Object	0	1	0	1	0.1
Sub Total Fixed Objects	10	48	0	58	6.5
Moveable Objects					
Another Road Vehicle	51	539	3	593	66.9
Animal	14	1	0	15	1.7
Pedestrian	1	35	0	36	4.1
Other Moveable Object	0	0	0	0	0.0
Sub Total Moveable Objects	66	575	3	644	72.7
Non-Collision Events					
Ran Off Road	48	17	0	65	7.3
Rollover	90	19	1	110	12.4
Jack Knife or Trailer Swing	0	0	0	0	0.0
Fire or Explosion	1	4	0	5	0.6
Load Spill	0	0	0	0	0.0
Load Shift	0	0	0	0	0.0
Submersion	0	0	0	0	0.0
Other Non-Collision Event	0	0	0	0	0.0
Sub Total Non-Collision Events	139	40	1	180	20.3
Unknown Event	2	2	0	4	0.5
Grand Total	217	665	4	886	100.0

Licensed Drivers and Drivers in Collisions by Driver Age

Figure 5.1

	Under 16	16 to 19	20 to 24	25 to 34	35 to 44	45 to 54	55 to 64	65 and Over	Not Stated	Total
Licensed Drivers	93	1,048	2,084	6,452	5,266	2,386	974	282	0	18,585
Drivers in Collisions	20	132	171	335	258	107	56	11	141	1,231

Drivers in Collisions and Relative Risk by Driver Age



Collision Rates (Collisions Per 1,000 Licensed Drivers) by Severity and Driver Age

Figure 5.2

	15 to 19	20 to 24	25 to 34	35 to 44	45 to 54	55 to 64	65 and Over	Average Rate
Property Damage	84.1	63.3	43.2	40.8	36.9	43.1	35.5	53.9
Personal Injury & Fatal	49.1	18.7	8.7	8.2	8.0	14.4	3.5	12.3
Total	133.2	82.1	51.9	49.0	44.8	57.5	39.0	66.2
Relative Risk*	2.0	1.2	0.8	0.7	0.7	0.9	0.6	1.0

* Relative Risk = (% of drivers in collisions in age group)/(% of total licence holders in age group)

The age of drivers involved in traffic collisions can form the basis of various analysis and countermeasure programs. The reason for this interest is the over-involvement of young drivers in collisions and the disproportionately large number of charges laid as a result of collisions.

Figure 5.1 shows that the relative risk of drivers between the ages of 15 and 19 are 2 times more likely to be involved in a collision than the average driving population. On average, 13% of 15 to 19 year olds were involved in collisions, compared to 5% of 35 to 44 year olds.

Other factors such as exposure, risk, experience, alcohol, and vehicle type must be known to fully understand the relationship of driver age and collision involvement. Studies indicate that the risk of having a collision is a factor of driving experience, not just driver age.

Number of Drivers Involved in Collisions by Licence Class and Age

Figure 5.3

Age Group	Class 1	Class 2	Class 3	Class 4	Class 5	Class 6	Class 7	Req'd. Licence	Not Stated	Total
Under 16	1	0	0	1	3	0	1	6	7	20
16	0	0	0	0	25	0	1	2	2	30
17	0	0	0	0	23	0	0	2	1	27
18	0	0	0	1	22	0	5	4	3	36
19	0	0	0	0	27	0	0	6	4	39
20	0	0	0	0	22	0	1	3	6	33
21-24	8	1	2	9	104	0	1	1	8	138
25-34	38	6	16	22	226	0	2	6	6	335
35-44	39	5	20	20	163	0	1	3	4	258
45-54	18	3	5	8	69	0	1	1	2	107
55-64	4	0	6	8	34	0	1	0	0	56
65 and over	0	0	2	0	7	0	0	1	0	11
Not Stated	1	0	0	0	6	0	0	1	0	141
Drivers in Collisions	109	15	51	69	731	0	14	36	43	1,231
Total Licensed Drivers	1,076	164	653	747	15,052	4	889	N/A	N/A	18,585
Relative Risk*	1.53	1.38	1.18	1.39	0.73	0.00	0.24	N/A	N/A	1.00

*Relative Risk = (% of Total Collisions in Class)/(% of Total Licence Holders in Class)

Number of Drivers Involved in Collisions by Condition and Age

Figure 5.4

Driver Condition	< 16	16	17	18	19	20	21-24	25-34	35-44	45-54	55-64	65+	Not Stated	Total	%
Apparently Normal	18	25	24	27	30	20	107	276	226	103	49	10	10	925	75.1
Fatigued, Fell Asleep	0	0	0	0	0	1	3	2	3	0	0	0	0	9	0.7
Inexperience	0	0	0	0	0	0	0	0	0	0	0	0	0	0	0.0
Under Influence - Alcohol	1	2	1	7	6	10	15	28	14	2	2	0	1	89	7.2
Under Influence - Drugs	0	0	0	0	0	0	0	0	0	0	0	0	0	0	0.0
Sudden Illness, Lost Consciousness	0	0	0	0	0	0	0	0	0	0	0	0	0	0	0.0
Other Condition	1	0	0	0	0	0	0	2	1	0	1	0	0	5	0.4
Unknown	0	3	2	2	3	2	13	27	14	2	4	1	130	203	16.5
Total	20	30	27	36	39	33	138	335	258	107	56	11	141	1,231	
%	1.6	2.4	2.2	2.9	3.2	2.7	11.2	27.2	21.0	8.7	4.5	0.9	11.5		100.0

Number of Drivers Involved in Collisions by Driver Action and Age

Figure 5.5

Driver Action	<16	16	17	18	19	20	21-24	25-34	35-44	45-54	55-64	65+	Not Stated	Total	%
Driving Properly	7	7	8	10	11	4	33	120	92	42	20	2	2	358	29.1
Following Too Closely	0	1	1	3	1	3	7	17	13	3	5	1	1	56	4.6
<u>Distracted, Inattentive</u>	0	0	0	0	0	0	0	0	0	0	0	0	0	0	0.0
Driving Too Fast	2	5	3	6	5	6	10	28	20	4	5	1	4	99	8.0
Improper Turning or Passing	1	0	1	1	2	1	3	8	9	3	1	0	1	31	2.5
<u>Failing to Yield Right of Way</u>	3	4	5	5	7	3	9	21	22	11	2	2	1	95	7.7
Disobeying Traffic Control/Officer	0	0	1	0	0	0	1	0	5	2	0	0	0	9	0.7
Driving on Wrong Side of Road	0	0	0	1	2	0	0	5	1	3	1	0	2	15	1.2
<u>Driving in Wrong Direction</u>	0	0	0	0	0	0	0	0	0	0	0	0	0	0	0.0
Backing Unsafely	1	2	0	2	3	5	26	40	38	16	7	3	4	147	12.0
Lost Control	4	6	8	7	8	11	39	79	51	21	13	2	7	256	20.8
Other Driver Action	1	5	0	1	0	0	8	15	5	2	2	0	1	40	3.3
Unknown	0	0	0	0	0	0	2	2	2	0	0	0	118	124	10.1
Total	19	30	27	36	39	33	138	335	258	107	56	11	141	1,230	
%	1.5	2.4	2.2	2.9	3.2	2.7	11.2	27.2	21.0	8.7	4.6	0.9	11.5		100.0

Number of Vehicles in Collisions by Vehicle Type and Severity

Figure 6.1

Vehicle Type	Property Damage	Personal Injury	Fatal	Total	%
Passenger Car	414	74	3	491	32.7
Passenger Van	97	11	0	108	7.2
Light Utility Vehicle	0	0	0	0	0.0
Pickup Truck	557	91	0	648	43.1
Panel/Cargo Van	0	0	0	0	0.0
Other Truck/Van <= 4536 kg	0	0	0	0	0.0
Unit Truck > 4536 kg	32	4	0	36	2.4
Road Tractor	30	9	0	39	2.6
School Bus	4	0	0	4	0.3
Small School Bus	0	0	0	0	0.0
Urban Transit Bus	0	0	0	0	0.0
Intercity Bus	2	0	0	2	0.1
Bus - Unspecified	3	1	0	4	0.3
Motorcycle	5	4	1	10	0.7
Limited Speed Motorcycle	0	0	0	0	0.0
Off Road Vehicles (ATV)	0	4	0	4	0.3
Bicycle	0	11	0	11	0.7
Motor Home	3	0	0	3	0.2
Farm Equipment	0	0	0	0	0.0
Construction Equipment	3	2	0	5	0.3
Fire Engine	0	0	0	0	0.0
Snowmobile	7	21	0	28	1.9
Streetcar	0	0	0	0	0.0
Other	0	0	0	0	0.0
Unknown	110	0	0	110	7.3
Total	1267	232	4	1503	100.0

Number of Vehicles in Collisions by Vehicle Condition and Severity

Figure 6.2

Vehicle Condition	Property Damage	Personal Injury	Fatal	Total	%
No Apparent Defect	1047	200	3	1250	83.2
Defective Brakes	8	1	0	9	0.6
Defective Steering	1	0	0	1	0.1
Defective Lighting	3	2	0	5	0.3
Tire Blown Out	6	7	0	13	0.9
Unsecured Load, Spilled Load	1	1	0	2	0.1
Oversized Load, Overload	1	0	0	1	0.1
Visibility Obstructed	18	4	0	22	1.5
Other Defective Vehicular Parts	33	7	0	40	2.7
Other Vehicular Factor	0	0	0	0	0.0
Unknown	149	10	1	160	10.6
Total	1267	232	4	1503	100.0

Number of Vehicles in Collisions by Vehicle Manoeuvre and Severity

Figure 6.3

Vehicle Manoeuvre	Property Damage	Personal Injury	Fatal	Total	%
Going Straight Ahead	445	170	3	618	41.1
Turning Left	77	20	0	97	6.5
Turning Right	59	11	0	70	4.7
Making U-Turn	8	1	0	9	0.6
Changing Lanes	5	0	0	5	0.3
Merging	1	0	0	1	0.1
Reversing	151	4	0	155	10.3
Overtaking	13	1	1	15	1.0
Negotiating Curve	0	0	0	0	0.0
Slowing or Stopped in Traffic	79	12	0	91	6.1
Starting in Traffic	8	1	0	9	0.6
Leaving Roadside	15	0	0	15	1.0
Stopped/Parked Legally	260	7	0	267	17.8
Stopped/Parked Illegally	9	1	0	10	0.7
Swerving to Avoid Collision	10	3	0	13	0.9
Run-away or Roll-away Vehicle	11	1	0	12	0.8
Unspecified Manoeuvre	0	0	0	0	0.0
Other	4	0	0	4	0.3
Unknown	112	0	0	112	7.5
Total	1267	232	4	1503	100.0

Number of Vehicles in Collisions by Vehicle Year and Severity

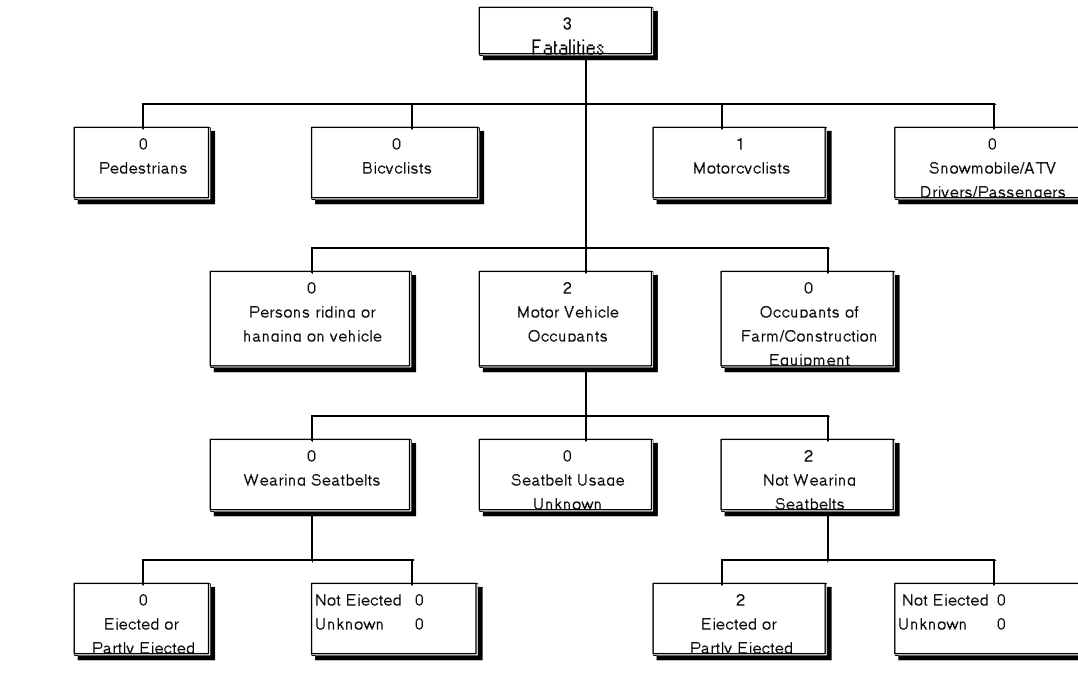
Figure 6.4

Model Year	Property Damage	Personal Injury	Fatal	Total	%
1992	5	1	0	6	0.4
1991	78	16	0	94	6.3
1990	141	25	0	166	11.0
1989	162	25	1	188	12.5
1988	118	12	0	130	8.6
1987	93	11	0	104	6.9
1986	96	22	0	118	7.9
1985	82	15	0	97	6.5
1984	53	11	0	64	4.3
1983	31	7	0	38	2.5
1982	59	11	0	70	4.7
1981	52	10	0	62	4.1
1980 & Older	172	47	3	222	14.8
Unspecified	125	19	0	144	9.6
Total	1267	232	4	1503	100.0

Victims and Occupant Restraints – Section 7

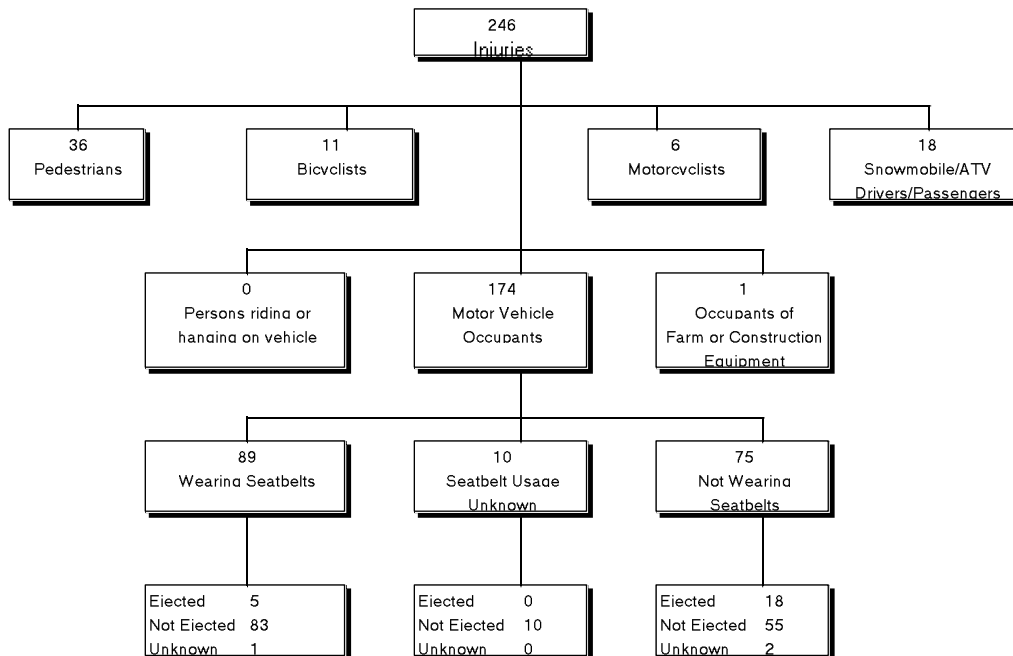
Fatalities Classification
(January 1 to December 31, 1991)

Figure 7.1



Injuries Classification
(January 1 to December 31, 1991)

Figure 7.2



Victims and Occupant Restraints – Section 7

Persons Injured by Road User Class and Age Group

Figure 7.3

Road User Class	0 to 4	5 to 14	15 to 19	20 to 24	25 to 34	35 to 44	45 to 54	55 to 64	65 & older	Not Stated	Total	%
Motor Vehicle Driver	1	1	14	15	21	22	7	12	0	0	93	37.8
Motor Vehicle Passenger	4	10	12	7	23	11	0	0	4	10	81	32.9
<u>Pedestrian</u>	5	10	1	4	3	2	3	1	4	3	36	14.6
Bicyclist	0	3	1	3	2	1	1	0	0	0	11	4.5
Motorcyclist (includes passengers)	0	0	2	3	1	0	0	0	0	0	6	2.4
ATV Operators & Passengers	0	3	0	0	0	0	0	0	0	0	3	1.2
Snowmobile Operators & Passengers	0	3	7	0	4	0	0	0	1	0	15	6.1
Farm/Construction Equipment	0	0	0	0	1	0	0	0	0	0	1	0.4
Other	0	0	0	0	0	0	0	0	0	0	0	0.0
Unspecified	0	0	0	0	0	0	0	0	0	0	0	0.0
Total	10	30	37	32	55	36	11	13	9	13	246	100.0

Persons Killed by Road User Class and Age Group

Figure 7.4

Road User Class	0 to 4	5 to 14	15 to 19	20 to 24	25 to 34	35 to 44	45 to 54	55 to 64	65 & older	Not Stated	Total	%
Motor Vehicle Driver	0	0	0	2	0	0	0	0	0	0	2	66.7
Motor Vehicle Passenger	0	0	0	0	0	0	0	0	0	0	0	0.0
<u>Pedestrian</u>	0	0	0	0	0	0	0	0	0	0	0	0.0
Bicyclist	0	0	0	0	0	0	0	0	0	0	0	0.0
Motorcyclist (includes passengers)	0	0	0	1	0	0	0	0	0	0	1	33.3
ATV Operators & Passengers	0	0	0	0	0	0	0	0	0	0	0	0.0
Snowmobile Operators & Passengers	0	0	0	0	0	0	0	0	0	0	0	0.0
Farm/Construction Equipment	0	0	0	0	0	0	0	0	0	0	0	0.0
Other	0	0	0	0	0	0	0	0	0	0	0	0.0
Unspecified	0	0	0	0	0	0	0	0	0	0	0	0.0
Total	0	0	0	3	0	0	0	0	0	0	3	100.0

Persons Injured or Killed by Road User Class and Gender

Figure 7.5

Road User Class	Persons Injured				Person Killed			
	Male	Female	Unknown	Total	Male	Female	Unknown	Total
Motor Vehicle Driver	63	30	0	93	2	0	0	2
Motor Vehicle Passenger	41	40	0	81	0	0	0	0
<u>Pedestrian</u>	21	15	0	36	0	0	0	0
Bicyclist	7	4	0	11	0	0	0	0
Motorcyclist (includes passengers)	4	2	0	6	1	0	0	1
ATV Operators & Passengers	1	2	0	3	0	0	0	0
Snowmobile Operators & Passengers	8	7	0	15	0	0	0	0
Farm/Construction Equipment	1	0	0	1	0	0	0	0
Other	0	0	0	0	0	0	0	0
Unspecified	0	0	0	0	0	0	0	0
Total	146	100	0	246	3	0	0	3

Victims and Occupant Restraints – Section 7

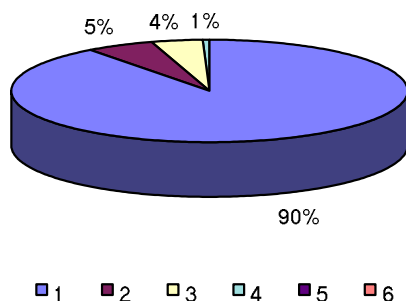
Motor Vehicle* Occupants by Injury Severity and Restraint Use

Figure 7.6

Injury Severity	Not Restrained	Lap Belt Only	Lap & Torso Belt	Child Restraint Device	Restraint Use Unknown	Total	%
Not Injured	293	86	698	0	541	1618	90.2
Minimal Injuries	25	8	40	0	8	81	4.5
Minor Injuries	30	5	30	0	1	66	3.7
Major (Hospital Admission)	20	2	4	0	1	27	1.5
Fatal	2	0	0	0	0	2	0.1
Injured - Extent Unknown	0	0	0	0	0	0	0.0
Total	370	101	772	0	551	1794	100.0

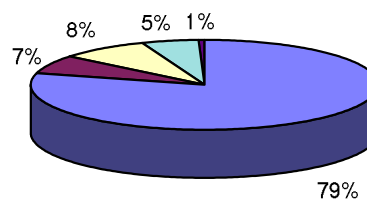
* Excludes occupants of motorcycles, mopeds, snowmobiles, all-terrain vehicles, and farm/construction equipment

Restraints Used



Restraints Not Used

Figure 7.7



Note: The totals used to calculate the percentages in Figures 7.2 and 7.3 do not include occupants where seat belt use was as "unknown".

Victims and Occupant Restraints – Section 7

Motor Vehicle* Occupants by Injury Severity & Age Group

Figure 7.8

Restraints Used

	0	5	15	20	25	35	45	55	65	Not	
Injury Severity	to 4	to 14	to 19	to 24	to 34	to 44	to 54	to 64	& older	Stated	Total
Not Injured	21	28	108	106	208	165	69	33	15	31	784
Minimal Injuries	2	3	5	4	14	8	1	4	0	7	48
Minor Injuries	2	2	5	2	9	8	1	5	0	1	35
Major (Hospital Admission)	0	1	1	1	2	1	0	0	0	0	6
Fatal	0	0	0	0	0	0	0	0	0	0	0
Injured - Extent Unknown	0	0	0	0	0	0	0	0	0	0	0
Total	25	34	119	113	233	182	71	42	15	39	873

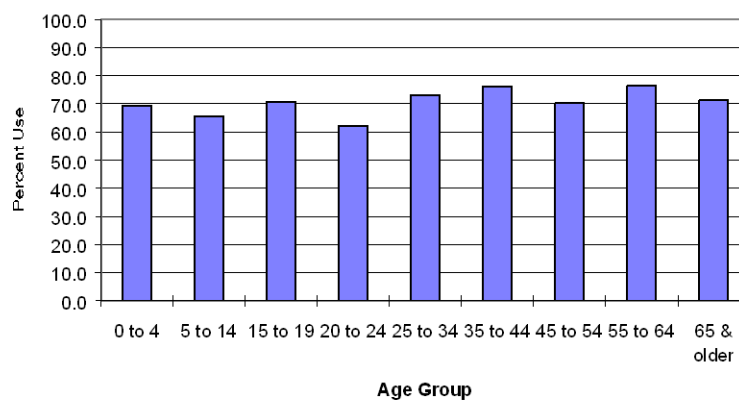
Restraints Not Used

	0	5	15	20	25	35	45	55	65	Not	
Injury Severity	to 4	to 14	to 19	to 24	to 34	to 44	to 54	to 64	& older	Stated	Total
Not Injured	10	13	34	52	71	44	25	11	3	30	293
Minimal Injuries	0	3	6	3	3	5	3	0	1	1	25
Minor Injuries	1	1	5	7	4	7	2	0	2	1	30
Major (Hospital Admission)	0	1	4	5	7	1	0	2	0	0	20
Fatal	0	0	0	2	0	0	0	0	0	0	2
Injured - Extent Unknown	0	0	0	0	0	0	0	0	0	0	0
Total	11	18	49	69	85	57	30	13	6	32	370

* Excludes occupants of motorcycles, mopeds, snowmobiles, all-terrain vehicles, and farm/construction equipment

Victim Restraint Use Rate by Victim Age

Figure 7.9



Pedestrians – Section 8

Pedestrians Injured or Killed by Age Group

Figure 8.1

	Age Group										Not Stated	Total	%
	0 to 4	5 to 14	15 to 19	20 to 24	25 to 34	35 to 44	45 to 54	55 to 64	65 & older				
Injured	5	10	1	4	3	2	3	1	4	3	36	100.0	
Killed	0	0	0	0	0	0	0	0	0	0	0	0.0	
Total	5	10	1	4	3	2	3	1	4	3	36		
%	13.9	27.8	2.8	11.1	8.3	5.6	8.3	2.8	11.1	8.3	100.0	100.0	

Pedestrians Injured or Killed by Pedestrian Action and Age Group

Figure 8.2

	Age Group										Not Stated	Total	%
	0 to 4	5 to 14	15 to 19	20 to 24	25 to 34	35 to 44	45 to 54	55 to 64	65 & older				
Pedestrian Action													
Crossing Intersection With Traffic Control, With Right-of-Way	0	2	0	1	1	1	0	0	2	0	7	19.4	
Crossing Intersection With Traffic Control, Without Right-of-Way	0	1	0	1	0	0	0	0	0	0	2	5.6	
Crossing Intersection - No Traffic Control	0	0	0	0	0	0	0	0	0	0	0	0.0	
Crossing Roadway at Crosswalk	0	0	0	0	0	0	1	0	0	0	1	2.8	
Crossing Roadway Not at Intersection	0	1	0	0	0	0	0	1	0	0	2	5.6	
Walking Along Roadway Against Traffic	0	0	0	1	0	0	0	0	0	0	1	2.8	
Walking Along Roadway With Traffic	0	0	1	0	0	0	1	0	0	0	2	5.6	
On Sidewalk, Median, Safety Zone	0	2	0	1	0	0	0	0	0	0	3	8.3	
Walking on Travelled Part of Roadway Against Traffic	0	0	0	0	0	0	0	0	0	0	0	0.0	
Walking on Travelled Part of Roadway With Traffic	0	0	0	0	0	0	0	0	0	0	0	0.0	
Coming from Behind Parked Vehicle/Object on Roadside	2	0	0	0	1	0	0	0	1	0	4	11.1	
Coming from Behind Moving Vehicle	0	0	0	0	0	0	1	0	1	1	3	8.3	
Running into Roadway	2	1	0	0	0	0	0	0	0	2	5	13.9	
Getting On/Off School Bus	0	0	0	0	0	0	0	0	0	0	0	0.0	
Getting On/Off Other Vehicles	1	1	0	0	0	0	0	0	0	0	2	5.6	
Pushing Vehicle on Road	0	0	0	0	0	0	0	0	0	0	0	0.0	
Working on Vehicle on Side of Road	0	0	0	0	0	0	0	0	0	0	0	0.0	
Playing on Roadway	0	1	0	0	0	0	0	0	0	0	1	2.8	
Working on Roadway	0	0	0	0	0	0	0	0	0	0	0	0.0	
Living on Road	0	0	0	0	0	0	0	0	0	0	0	0.0	
Other	0	1	0	0	1	1	0	0	0	0	3	8.3	
Unknown	0	0	0	0	0	0	0	0	0	0	0	0.0	
Total	5	10	1	4	3	2	3	1	4	3	36	100.0	

Pedestrians Injured or Killed By Place of Occurrence and Injury Severity

Figure 8.3

Place of Occurrence	Killed	Injured	Total	%
Urban	0	36	36	100.0
Rural	0	0	0	0.0
Unspecified	0	0	0	0.0
Total	0	36	36	100.0

Pedestrians Injured or Killed by Accident Site

Figure 8.4

Accident Site	Killed	Injured	Total	%
Non-Intersection	0	14	14	38.9
At Intersection of At Least Two Roadways	0	11	11	30.6
Intersection With Parking Lot/Driveway/Alley	0	6	6	16.7
Railroad Level Crossing	0	0	0	0.0
Bridge/Overpass/Viaduct	0	1	1	2.8
Tunnel or Underpass	0	0	0	0.0
Passing Lane/Climbing Lane	0	0	0	0.0
Other	0	3	3	8.3
Unspecified	0	1	1	2.8
Total	0	36	36	100.0

Pedestrians Injured or Killed by Pedestrian Condition

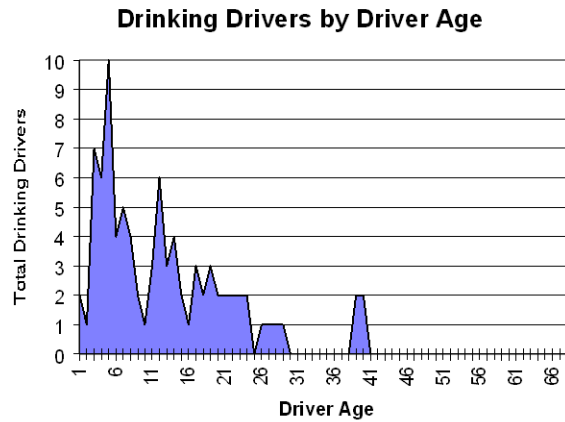
Figure 8.5

Pedestrian Condition	Killed	Injured	Total	%
Apparently Normal	0	22	22	61.1
Fatigued, Fell Asleep	0	1	1	2.8
Inexperience	0	0	0	0.0
Under Influence - Alcohol	0	7	7	19.4
Under Influence - Drugs	0	0	0	0.0
Sudden Illness, Lost Consciousness	0	0	0	0.0
Other Condition	0	4	4	11.1
Unknown	0	2	2	5.6
Total	0	36	36	100.0

Drinking Drivers in Collisions by Driver Age and Gender

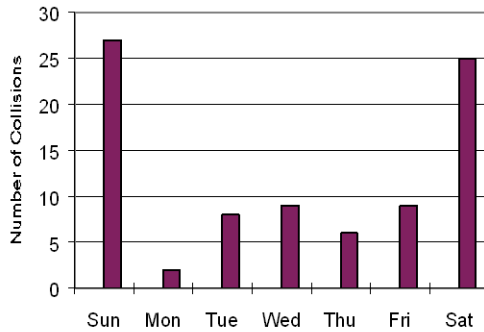
Figure 9.1

Driver Age	Male	Female	Not Stated	Total Drinking Drivers
Under 16	0	1	0	1
16	2	0	0	2
17	1	0	0	1
18	5	2	0	7
19	6	0	0	6
20	9	1	0	10
21 to 24	14	1	0	15
25 to 34	23	5	0	28
35 to 44	13	1	0	14
45 to 54	1	1	0	2
55 to 64	2	0	0	2
65 & Older	0	0	0	0
Not Stated	0	0	1	1
Total	76	12	1	89



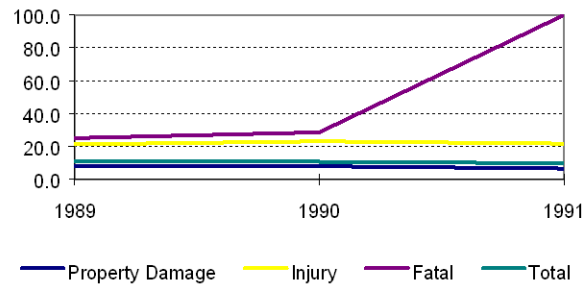
Collisions Involving Alcohol by Day of Week

Figure 9.2



Percentage of Collisions Involving Alcohol by Year and Severity

Figure 9.3



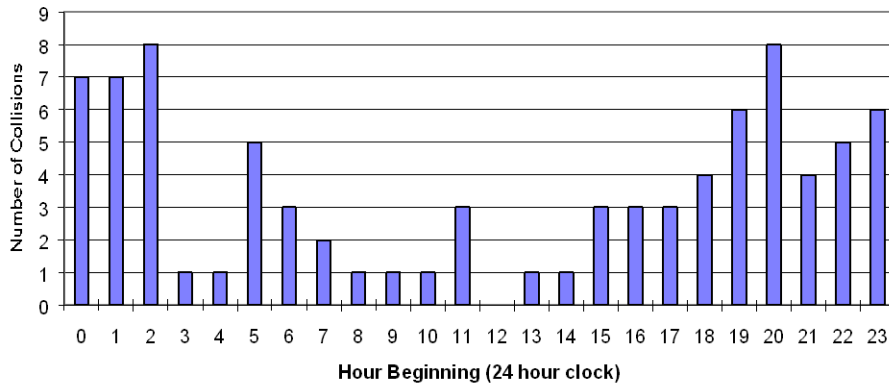
Number of Collisions and Victims Involving Alcohol

Figure 9.4

Number of Collisions						Number of Victims			
	Property	Personal			% of Total				% of Total
Year	Damage	Injury	Fatal	Total	Collisions	Injured	Killed	Total	Victims
1989	56	38	2	96	10.9	63	2	65	24.0
1990	53	32	2	87	10.6	45	2	47	22.6
1991	46	37	3	86	9.7	75	3	78	31.3
Average	52	36	2	90	10	61	2	63	26.0

Number of Alcohol Related Collisions by Time of Day

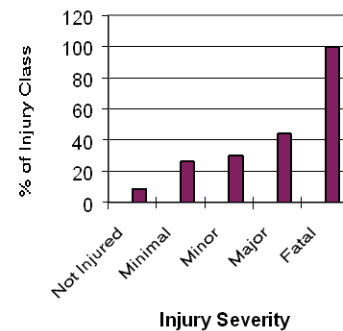
Figure 9.5



Injury Severity by Alcohol Involvement

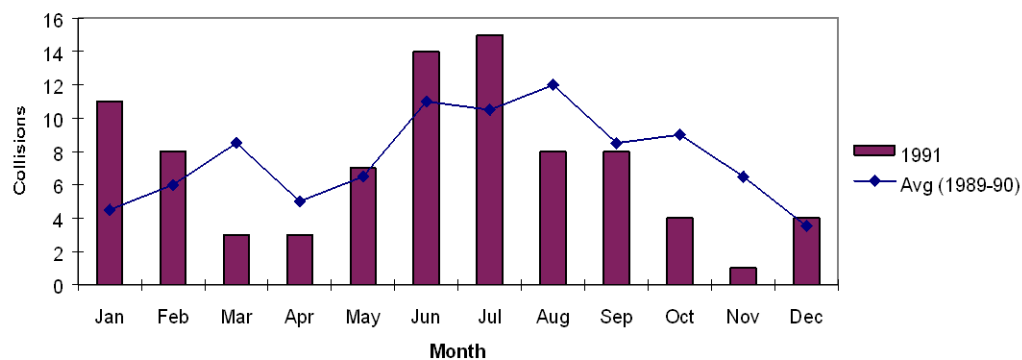
Figure 9.6

Injury Severity	Alcohol Involvement		Totals	% with Alcohol
	Yes	No		
Not Injured	142	1,507	1649	8.6
Minimal Injuries	27	76	103	26.2
Minor	33	76	109	30.3
Major	15	19	34	44.1
Fatal	3	0	3	100.0
Injured - Extent Unknown	0	0	0	-
Total	220	1678	1898	11.6



Alcohol-Involved Collisions by Month

Figure 9.7



Off-Road Vehicle Collisions by Month and Severity

Figure 10.1

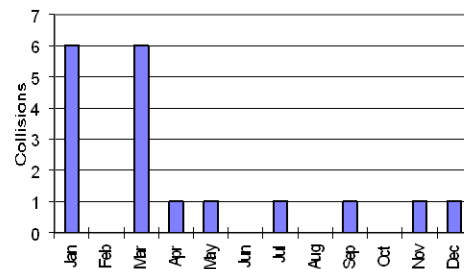
Month	Number of Collisions				Number of Victims	
	Property Damage	Personal Injury	Fatal	Total	Injured	Killed
January	2	4	0	6	5	0
February	0	0	0	0	0	0
March	0	6	0	6	6	0
April	0	1	0	1	3	0
May	0	1	0	1	1	0
June	0	0	0	0	0	0
July	0	1	0	1	1	0
August	0	0	0	0	0	0
September	0	1	0	1	1	0
October	0	0	0	0	0	0
November	0	1	0	1	1	0
December	0	1	0	1	1	0
Total	2	16	0	18	19	0

Off-Road Vehicle Collisions by Vehicle Type

Figure 10.2

	Snowmobile	ATV	Total
Total Victims	15	3	18
Killed	0	0	0
Injured	15	3	18
Total Vehicles Involved	28	4	32
Fatal	0	0	0
Injury	21	4	25
Property Damage	7	0	7

Off-Road Vehicle Collisions by Month



Off-Road Vehicle Drivers in Collisions by Driver Age and Gender

Figure 10.3

Age Group	Snowmobile			ATV			Total %	
	Male	Female	Unknown	Male	Female	Unknown		
0 to 4	0	0	0	0	0	0	0	0.0
5 to 14	0	2	0	0	4	0	6	20.7
15 to 19	12	2	0	0	0	0	14	48.3
20 to 24	1	0	0	0	0	0	1	3.4
25 to 34	4	0	0	0	0	0	4	13.8
35 to 44	2	0	0	0	0	0	2	6.9
45 to 54	0	0	0	0	0	0	0	0.0
55 to 64	0	0	0	0	0	0	0	0.0
65 & Over	1	0	0	0	0	0	1	3.4
Unknown	0	0	1	0	0	0	1	3.4
Total	20	4	1	0	4	0	29	100.0

Off-Road Vehicle Drivers in Collisions by Driver Condition and Severity

Figure 10.4

Driver Condition	Property Damage	Personal Injury	Fatal	Total %	
				Total	%
Apparently Normal	3	14	0	17	58.6
Fatigue/Fell Asleep	0	0	0	0	0.0
Inexperience	0	0	0	0	0.0
Under Influence - Alcohol	2	4	0	6	20.7
Under Influence - Drugs	0	0	0	0	0.0
Sudden Illness, Lost Consciousness	0	0	0	0	0.0
Other Condition	0	0	0	0	0.0
Unknown	1	5	0	6	20.7
Total	6	23	0	29	100.0

Off-Road Vehicle Drivers in Collisions by Driver Action and Severity

Figure 10.5

Driver Action	Property Damage	Personal Injury	Fatal	Total	%
Driving Properly	1	3	0	4	13.8
Following Too Closely	1	0	0	1	3.4
Distracted, Inattentive	0	0	0	0	0.0
Driving Too Fast for Conditions	0	2	0	2	6.9
Improper Turning or Passing	1	1	0	2	6.9
Failed to Yield Right-of-Way	3	9	0	12	41.4
Disobeyed Traffic Control or Officer	0	0	0	0	0.0
Driving on Wrong Side of Road	0	0	0	0	0.0
Driving in Wrong Direction	0	0	0	0	0.0
Backing Unsafely	0	0	0	0	0.0
Lost Control	0	5	0	5	17.2
Other	0	3	0	3	10.3
Unknown	0	0	0	0	0.0
Total	6	23	0	29	100.0

Off-Road Vehicle Occupants by Injury Severity and Helmet Use

Figure 10.6

Injury Severity	Helmet Worn	Helmet Not Worn	Unknown	Total	%
Not Injured	4	18	2	24	57.1
Minimal Injuries	2	2	0	4	9.5
Minor Injuries	1	9	1	11	26.2
Major (Hospital Admission)	0	3	0	3	7.1
Fatal	0	0	0	0	0.0
Injured - Extent Unknown	0	0	0	0	0.0
Total	7	32	3	42	100.0

Collisions by Region, RCMP Detachment and Severity

Figure 11.1

A - Inuvik Region

RCMP Detachment	Number of Collisions				Number of Victims	
	Property Damage	Personal Injury	Fatal	Total	Injured	Killed
Aklavik	3	1	0	4	1	0
Deline	0	1	0	1	1	0
Fort Good Hope	2	2	0	4	2	0
Fort McPherson	13	2	0	15	3	0
Holman	0	0	0	0	0	0
Inuvik	83	24	0	107	31	0
Norman Wells	7	5	0	12	5	0
Sachs Harbour	3	0	0	3	0	0
Tuktoyaktuk	1	4	0	5	5	0
Tulita	6	1	0	7	1	0
Sub Total						
Inuvik Region	118	40	0	158	49	0

B - Fort Simpson Region

RCMP Detachment	Number of Collisions				Number of Victims	
	Property Damage	Personal Injury	Fatal	Total	Injured	Killed
Fort Liard	1	0	0	1	0	0
Fort Simpson	22	16	1	39	29	1
Sub Total						
Fort Simpson Region	23	16	1	40	29	1

C - South Slave Region

RCMP Detachment	Number of Collisions				Number of Victims	
	Property Damage	Personal Injury	Fatal	Total	Injured	Killed
Hay River	76	23	0	99	35	0
Fort Providence	29	11	0	40	16	0
Fort Resolution	5	4	0	9	5	0
Fort Smith	40	13	0	53	20	0
Lutsel K'e	1	3	0	4	6	0
Sub Total						
South Slave Region	151	54	0	205	82	0

D - North Slave Region

RCMP Detachment	Number of Collisions				Number of Victims	
	Property Damage	Personal Injury	Fatal	Total	Injured	Killed
Rae/Wha Ti	29	13	1	43	22	1
Yellowknife	391	48	1	440	64	1
Sub Total						
North Slave Region	420	61	2	483	86	2

Total - All Regions	712	171	3	886	246	3
----------------------------	------------	------------	----------	------------	------------	----------

Collision Rates by Region and RCMP Detachment

Figure 11.2

A - Inuvik Region

RCMP Detachment	Number of Collisions	Licensed Drivers [1]	Registered Vehicles [1]	Population (1991 estimate [2])	Collision Rates		
					Collisions/ 100 Licensed Drivers	Collisions/ 100 Registered Vehicles	Collisions/ 100 Population
Aklavik	4	158	86	842	2.53	4.65	0.48
Deline	1	0	31	594	0.00	3.23	0.17
Fort Good Hope	4	111	86	719	3.60	4.65	0.56
Fort McPherson	15	165	135	944	9.09	11.11	1.59
Ulukhaktok	0	42	86	383	0.00	0.00	0.00
Inuvik	107	1,656	1,543	3,393	6.46	6.93	3.15
Norman Wells	12	386	524	669	3.11	2.29	1.79
Sachs Harbour	3	27	21	132	11.11	14.29	2.27
Tuktoyaktuk	5	334	274	1,236	1.50	1.82	0.40
Tulita	7	0	67	396	0.00	10.45	1.77
Sub Total							
Inuvik Region	158	2,879	2,853	9,308	5.49	5.54	1.70

B - Fort Simpson Region

RCMP Detachment	Number of Collisions	Licensed Drivers [1]	Registered Vehicles [1]	Population (1991 estimate [2])	Collision Rates		
					Collisions/ 100 Licensed Drivers	Collisions/ 100 Registered Vehicles	Collisions/ 100 Population
Fort Liard	1	141	149	517	0.71	0.67	0.19
Fort Simpson	39	601	637	1,555	6.49	6.12	2.51
Sub Total							
Fort Simpson Region	40	742	786	2,072	5.39	5.09	1.93

C - South Slave Region

RCMP Detachment	Number of Collisions	Licensed Drivers [1]	Registered Vehicles [1]	Population (1991 estimate [2])	Collision Rates		
					Collisions/ 100 Licensed Drivers	Collisions/ 100 Registered Vehicles	Collisions/ 100 Population
Hay River	99	2,321	3,734	3,733	4.27	2.65	2.65
Fort Providence	40	197	201	692	20.30	19.90	5.78
Fort Resolution	9	157	160	534	5.73	5.63	1.69
Fort Smith	53	1,338	1,263	2,616	3.96	4.20	2.03
Lutsel K'e	4	2	23	304	200.00	17.39	1.32
Sub Total							
South Slave Region	205	4,015	5,381	7,879	5.11	3.81	2.60

D - North Slave Region

RCMP Detachment	Number of Collisions	Licensed Drivers [1]	Registered Vehicles [1]	Population (1991 estimate [2])	Collision Rates		
					Collisions/ 100 Licensed Drivers	Collisions/ 100 Registered Vehicles	Collisions/ 100 Population
Behchoko/Whati	43	133	316	2,429	32.33	13.61	1.77
Yellowknife	440	10,816	10,135	16,386	4.07	4.34	2.69
Sub Total							
North Slave Region	483	10,949	10,451	18,815	4.41	4.62	2.57

Total - All Regions	886	18,585	19,471	38,700	4.77	4.55	2.29
----------------------------	------------	---------------	---------------	---------------	-------------	-------------	-------------

[1] Number of registered vehicles and licensed drivers are as of December 31, 1991.

[2] 1991 population from NWT Bureau of Statistics July 1 estimate published in 'Quarterly Report', March 1992.

Geographic Distribution – Section 11

Collisions on the NWT Highway System

Figure 11.3

Highway #1 (Mackenzie)	On Km	Collision Date	Collision Severity	Collision Configuration	#Persons Injured	#Persons Killed
	0.0	12-Dec-1991	Property Damage	Single Vehicle Rollover	0	0
	15.0	14-Oct-1991	Property Damage	Single Vehicle Rollover	0	0
	50.0	15-Oct-1991	Property Damage	Single Vehicle Rollover	0	0
	77.0	28-Feb-1991	Property Damage	Collision with Fixed Object	0	0
	77.0	22-Jun-1991	Injury	Collision with Fixed Object	1	0
	84.0	14-Jun-1991	Property Damage	Collision with Fixed Object	0	0
	87.0	2-Dec-1991	Property Damage	Ran Off Road	0	0
	88.0	16-Dec-1991	Property Damage	Other Single Vehicle Collision	0	0
	111.0	9-Jul-1991	Property Damage	Other Multi-Vehicle Collision	0	0
	114.0	17-Feb-1991	Property Damage	Other Multi-Vehicle Collision	0	0
	124.0	14-Oct-1991	Injury	Other Multi-Vehicle Collision	1	0
	128.0	13-Oct-1991	Property Damage	Single Vehicle Rollover	0	0
	132.0	5-Aug-1991	Property Damage	Ran Off Road	0	0
	135.0	14-Mar-1991	Property Damage	Animal Strike	0	0
	146.0	9-Jan-1991	Property Damage	Other Multi-Vehicle Collision	0	0
	151.0	19-Jul-1991	Injury	Single Vehicle Rollover	1	0
	160.0	22-May-1991	Injury	Ran Off Road	1	0
	171.0	26-Sep-1991	Injury	Collision with Fixed Object	1	0
	182.0	29-Jun-1991	Injury	Rear End	2	0
	207.0	12-Mar-1991	Property Damage	Collision with Fixed Object	0	0
	246.0	15-May-1991	Injury	Rear End	1	0
	260.0	11-Feb-1991	Property Damage	Single Vehicle Rollover	0	0
	266.0	13-Oct-1991	Property Damage	Ran Off Road	0	0
	284.0	18-Feb-1991	Property Damage	Single Vehicle Rollover	0	0
	289.0	15-Feb-1991	Property Damage	Single Vehicle Rollover	0	0
	294.0	13-Aug-1991	Property Damage	Ran Off Road	0	0
	314.0	21-Oct-1991	Injury	Single Vehicle Rollover	1	0
	370.0	16-Sep-1991	Injury	Single Vehicle Rollover	1	0
	372.0	26-Feb-1991	Property Damage	Single Vehicle Rollover	0	0
	395.0	9-Jun-1991	Fatal	Single Vehicle Rollover	1	1
	411.0	25-Jan-1991	Injury	Single Vehicle Rollover	3	0
	426.0	11-Aug-1991	Injury	Single Vehicle Rollover	1	0
	447.0	17-Jul-1991	Injury	Single Vehicle Rollover	1	0
	461.0	21-Dec-1991	Injury	Collision with Fixed Object	1	0
	469.0	19-May-1991	Injury	Single Vehicle Rollover	1	0
	470.0	23-May-1991	Injury	Collision with Fixed Object	1	0
	470.0	22-Jun-1991	Injury	Single Vehicle Rollover	3	0
Summary Highway #1	Property Damage Collisions	Personal Injury Collisions	Fatal Collisions	Total Collisions	Persons Injured	Persons Killed
	20	15	1	36	19	1
Highway #2 (Hay River)	On Km	Collision Date	Collision Severity	Collision Configuration	#Persons Injured	#Persons Killed
	4.0	23-Jan-1991	Property Damage	Single Vehicle Rollover	0	0
	4.0	8-Jul-1991	Property Damage	Single Vehicle Rollover	0	0
	28.0	29-Jun-1991	Injury	Single Vehicle Rollover	2	0
	33.0	10-Jun-1991	Property Damage	Passing - Left Turn	0	0
	37.0	24-May-1991	Injury	Rear End	1	0
	37.0	15-Jul-1991	Injury	Single Vehicle Rollover	2	0
	38.0	21-Jan-1991	Property Damage	Single Vehicle Rollover	0	0
	38.0	1-Feb-1991	Property Damage	Single Vehicle Rollover	0	0
	38.0	25-Feb-1991	Property Damage	Single Vehicle Rollover	0	0
	38.0	15-Apr-1991	Property Damage	Other Multi-Vehicle Collision	0	0
	38.2	13-Dec-1991	Property Damage	Other Multi-Vehicle Collision	0	0
	41.0	29-Jul-1991	Injury	Ran Off Road	1	0
	44.6	19-Jul-1991	Injury	Rear End	3	0
Summary Highway #2	Property Damage Collisions	Personal Injury Collisions	Fatal Collisions	Total Collisions	Persons Injured	Persons Killed
	8	5	0	13	9	0

Geographic Distribution – Section 11

Highway #3 (Yellowknife)	On Km	Collision Date	Collision Severity	Collision Configuration	#Persons Injured	#Persons Killed
	1.0	16-Mar-1991	Property Damage	Ran Off Road	0	0
	2.0	29-Jun-1991	Property Damage	Rear End	0	0
	7.0	20-Oct-1991	Property Damage	Single Vehicle Rollover	0	0
	22.0	8-Mar-1991	Property Damage	Ran Off Road	0	0
	22.0	29-Jun-1991	Injury	Other Multi-Vehicle Collision	3	0
	26.0	26-Feb-1991	Property Damage	Animal Strike	0	0
	31.4	30-Aug-1991	Property Damage	Collision with Fixed Object	0	0
	35.0	20-Sep-1991	Property Damage	Animal Strike	0	0
	48.0	7-Feb-1991	Property Damage	Animal Strike	0	0
	49.0	12-Sep-1991	Property Damage	Animal Strike	0	0
	53.0	21-Oct-1991	Property Damage	Animal Strike	0	0
	57.0	2-Sep-1991	Injury	Animal Strike	1	0
	72.0	26-Feb-1991	Property Damage	Animal Strike	0	0
	72.0	9-Aug-1991	Injury	Single Vehicle Rollover	1	0
	90.0	23-Feb-1991	Injury	Single Vehicle Rollover	1	0
	97.0	10-Jul-1991	Injury	Single Vehicle Rollover	3	0
	98.0	19-Jul-1991	Property Damage	Single Vehicle Rollover	0	0
	103.0	21-Dec-1991	Property Damage	Other Multi-Vehicle Collision	0	0
	108.0	17-Mar-1991	Property Damage	Ran Off Road	0	0
	108.0	15-Dec-1991	Property Damage	Animal Strike	0	0
	123.0	2-Jan-1991	Property Damage	Rear End	0	0
	126.0	23-Jul-1991	Property Damage	Rear End	0	0
	127.0	28-Dec-1991	Property Damage	Other Single Vehicle Collision	0	0
	148.0	27-Sep-1991	Property Damage	Animal Strike	0	0
	153.0	15-Oct-1991	Property Damage	Single Vehicle Rollover	0	0
	153.0	21-Nov-1991	Property Damage	Rear End	0	0
	155.0	20-Dec-1991	Property Damage	Single Vehicle Rollover	0	0
	171.0	30-Jun-1991	Fatal	Sideswipe - Opposite Direction	2	1
	172.0	15-Jul-1991	Injury	Single Vehicle Rollover	1	0
	174.0	22-Aug-1991	Injury	Single Vehicle Rollover	2	0
	188.0	6-Oct-1991	Property Damage	Single Vehicle Rollover	0	0
	207.0	2-Jul-1991	Property Damage	Ran Off Road	0	0
	210.0	24-Sep-1991	Property Damage	Ran Off Road	0	0
	219.0	20-Nov-1991	Property Damage	Other Multi-Vehicle Collision	0	0
	226.0	7-Nov-1991	Property Damage	Collision with Fixed Object	0	0
	227.0	13-Jul-1991	Injury	Single Vehicle Rollover	3	0
	229.0	6-Mar-1991	Property Damage	Single Vehicle Rollover	0	0
	241.0	16-Mar-1991	Property Damage	Single Vehicle Rollover	0	0
	243.0	24-Feb-1991	Property Damage	Collision with Fixed Object	0	0
	245.0	13-Oct-1991	Injury	Collision with Fixed Object	1	0
	253.0	20-Jan-1991	Property Damage	Sideswipe - Opposite Direction	0	0
	253.0	16-Nov-1991	Property Damage	Ran Off Road	0	0
	258.0	22-Jul-1991	Property Damage	Ran Off Road	0	0
	265.0	12-Aug-1991	Injury	Single Vehicle Rollover	1	0
	265.0	10-Nov-1991	Property Damage	Other Multi-Vehicle Collision	0	0
	270.0	30-Jan-1991	Injury	Single Vehicle Rollover	1	0
	271.0	8-Sep-1991	Property Damage	Ran Off Road	0	0
	278.0	22-Jan-1991	Injury	Collision with Parked Vehicle	1	0
	285.0	13-Sep-1991	Injury	Single Vehicle Rollover	1	0
	300.0	10-Aug-1991	Property Damage	Single Vehicle Rollover	0	0
	301.0	10-Oct-1991	Injury	Single Vehicle Rollover	2	0
	303.0	14-Jul-1991	Injury	Ran Off Road	2	0
	303.0	31-Dec-1991	Injury	Sideswipe - Opposite Direction	1	0
	308.0	22-Aug-1991	Property Damage	Single Vehicle Rollover	0	0
	310.0	6-Jun-1991	Injury	Single Vehicle Rollover	1	0
	318.0	16-Nov-1991	Injury	Other Single Vehicle Collision	2	0
	318.0	29-Dec-1991	Property Damage	Single Vehicle Rollover	0	0
	330.0	4-Nov-1991	Property Damage	Other Multi-Vehicle Collision	0	0
	334.0	27-Jan-1991	Property Damage	Collision with Fixed Object	0	0
	335.0	7-Jul-1991	Property Damage	Ran Off Road	0	0
	335.0	2-Aug-1991	Fatal	Collision with Fixed Object	0	1
	336.0	16-Sep-1991	Property Damage	Other Multi-Vehicle Collision	0	0
	338.0	11-Oct-1991	Property Damage	Right Turn - Perpendicular Road	0	0
	338.0	21-Dec-1991	Property Damage	Single Vehicle Rollover	0	0
	338.8	13-Dec-1991	Property Damage	Collision with Fixed Object	0	0

Geographic Distribution – Section 11

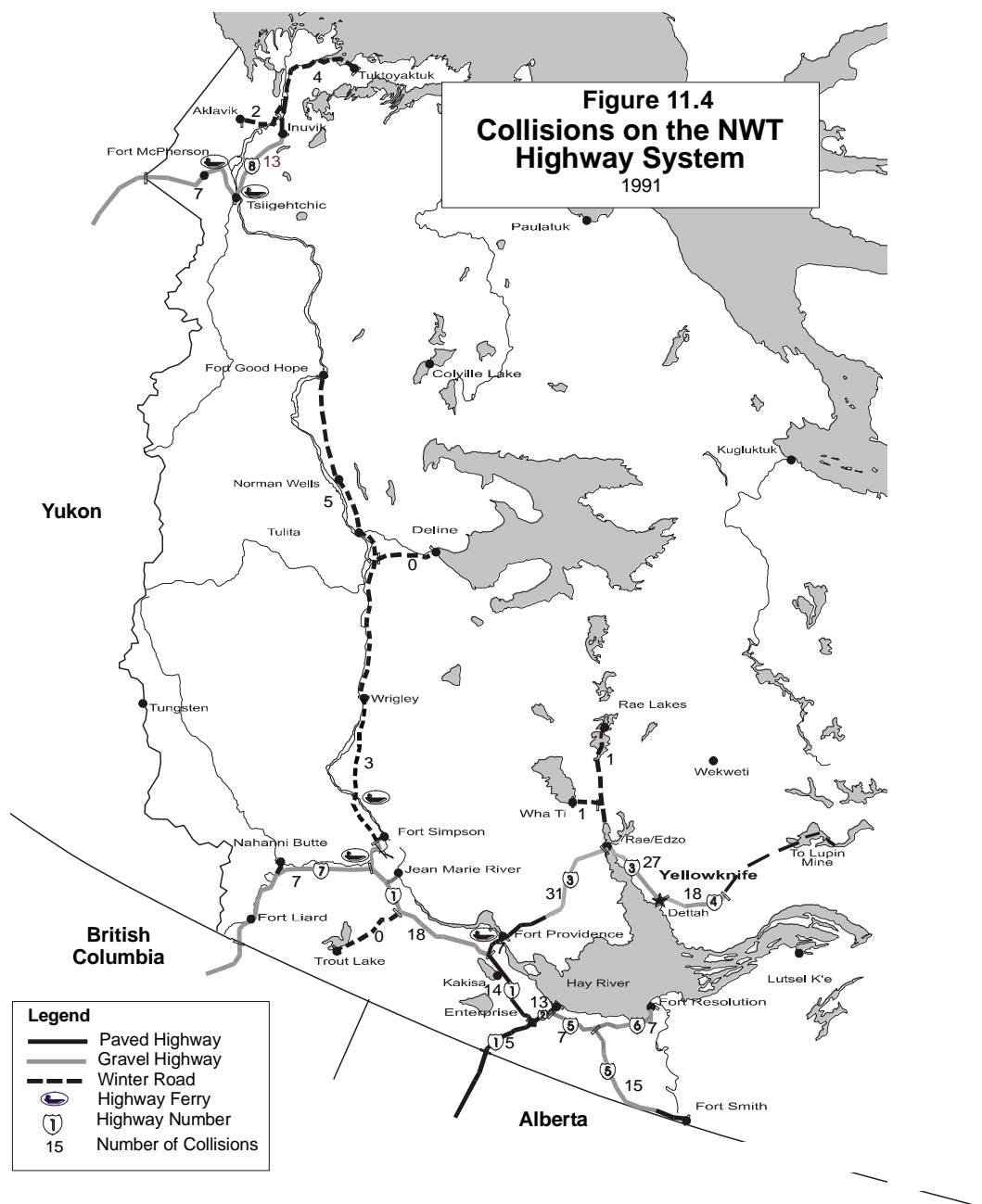
Summary Highway #3	Property Damage Collisions	Personal Injury Collisions	Fatal Collisions	Total Collisions	Persons Injured	Persons Killed
	45	18	2	65	30	2
Highway #4 (Ingraham Trail)	On Km	Collision Date	Collision Severity	Collision Configuration	#Persons Injured	#Persons Killed
	0.0	25-Feb-1991	Injury	Right Angle	5	0
	1.0	16-Jan-1991	Injury	Left Turn Across Path	4	0
	2.0	16-Feb-1991	Property Damage	Rear End	0	0
	2.0	6-Aug-1991	Property Damage	Ran Off Road	0	0
	4.0	25-Oct-1991	Property Damage	Collision with Parked Vehicle	0	0
	6.0	14-Oct-1991	Injury	Ran Off Road	2	0
	7.0	13-Jul-1991	Property Damage	Other Multi-Vehicle Collision	0	0
	7.0	17-Oct-1991	Property Damage	Sideswipe - Opposite Direction	0	0
	13.0	30-Jul-1991	Property Damage	Collision with Fixed Object	0	0
	15.0	2-Aug-1991	Injury	Collision with Fixed Object	2	0
	17.0	27-Jan-1991	Property Damage	Other Multi-Vehicle Collision	0	0
	30.0	4-Sep-1991	Injury	Single Vehicle Rollover	1	0
	45.0	24-Jun-1991	Injury	Ran Off Road	2	0
	51.0	12-Nov-1991	Property Damage	Ran Off Road	0	0
	52.0	4-Aug-1991	Property Damage	Single Vehicle Rollover	0	0
	54.0	9-Jun-1991	Property Damage	Single Vehicle Rollover	0	0
	55.0	7-Mar-1991	Property Damage	Other Single Vehicle Collision	0	0
	55.0	1-Jul-1991	Property Damage	Ran Off Road	0	0
Summary Highway #4	Property Damage Collisions	Personal Injury Collisions	Fatal Collisions	Total Collisions	Persons Injured	Persons Killed
	12	6	0	18	16	0
Highway #5 (Fort Smith Highway)	On Km	Collision Date	Collision Severity	Collision Configuration	#Persons Injured	#Persons Killed
	3.0	27-Aug-1991	Injury	Other Multi-Vehicle Collision	1	0
	15.0	28-Feb-1991	Property Damage	Ran Off Road	0	0
	16.0	20-Jan-1991	Property Damage	Single Vehicle Rollover	0	0
	28.0	2-Jan-1991	Injury	Single Vehicle Rollover	1	0
	28.0	12-Nov-1991	Property Damage	Animal Strike	0	0
	48.0	2-Feb-1991	Property Damage	Collision with Fixed Object	0	0
	61.0	26-Oct-1991	Property Damage	Ran Off Road	0	0
	87.0	29-Jun-1991	Injury	Single Vehicle Rollover	1	0
	88.0	10-Jun-1991	Injury	Single Vehicle Rollover	1	0
	96.0	12-Jan-1991	Injury	Rear End	1	0
	113.0	10-Dec-1991	Injury	Other Multi-Vehicle Collision	1	0
	120.0	5-Sep-1991	Property Damage	Animal Strike	0	0
	130.0	8-Aug-1991	Property Damage	Animal Strike	0	0
	147.0	20-Jul-1991	Property Damage	Ran Off Road	0	0
	160.0	11-Feb-1991	Property Damage	Single Vehicle Rollover	0	0
	200.0	14-Apr-1991	Property Damage	Ran Off Road	0	0
	238.0	21-Dec-1991	Property Damage	Other Multi-Vehicle Collision	0	0
	250.0	18-Feb-1991	Property Damage	Collision with Fixed Object	0	0
	250.0	22-Jun-1991	Injury	Single Vehicle Rollover	2	0
	256.0	17-Nov-1991	Injury	Collision with Fixed Object	1	0
	264.0	30-Sep-1991	Injury	Single Vehicle Rollover	5	0
	264.6	26-May-1991	Injury	Single Vehicle Rollover	3	0
Summary Highway #5	Property Damage Collisions	Personal Injury Collisions	Fatal Collisions	Total Collisions	Persons Injured	Persons Killed
	12	10	0	22	17	0

Geographic Distribution – Section 11

Highway #6 (Fort Resolution Highway)	On Km	Collision Date	Collision Severity	Collision Configuration	#Persons Injured	#Persons Killed
	4.0	10-Dec-1991	Property Damage	Single Vehicle Rollover	0	0
	46.0	11-Sep-1991	Property Damage	Collision with Fixed Object	0	0
	47.0	10-Dec-1991	Property Damage	Single Vehicle Rollover	0	0
	52.0	21-Sep-1991	Injury	Single Vehicle Rollover	2	0
	60.0	20-Feb-1991	Property Damage	Single Vehicle Rollover	0	0
	86.0	7-Oct-1991	Property Damage	Single Vehicle Rollover	0	0
	90.0	31-Jul-1991	Injury	Other Multi-Vehicle Collision	1	0
Summary Highway #6	Property Damage Collisions	Personal Injury Collisions	Fatal Collisions	Total Collisions	Persons Injured	Persons Killed
	5	2	0	7	3	0
Highway #7 (Liard Highway)	On Km	Collision Date	Collision Severity	Collision Configuration	#Persons Injured	#Persons Killed
	174.0	11-Oct-1991	Injury	Single Vehicle Rollover	2	0
	219.0	1-Sep-1991	Injury	Animal Strike	1	0
	220.0	31-Mar-1991	Property Damage	Collision with Fixed Object	0	0
	221.0	12-Aug-1991	Injury	Single Vehicle Rollover	3	0
	250.0	1-Jan-1996	Property Damage	Ran Off Road	0	0
Summary Highway #7	Property Damage Collisions	Personal Injury Collisions	Fatal Collisions	Total Collisions	Persons Injured	Persons Killed
	2	3	0	5	6	0
Highway #8 (Dempster Highway)	On Km	Collision Date	Collision Severity	Collision Configuration	#Persons Injured	#Persons Killed
	34.0	16-Jun-1991	Property Damage	Single Vehicle Rollover	0	0
	88.0	23-Dec-1991	Property Damage	Single Vehicle Rollover	0	0
	100.0	4-Jul-1991	Property Damage	Ran Off Road	0	0
	105.0	9-Dec-1991	Property Damage	Collision with Fixed Object	0	0
	122.0	25-Jan-1991	Property Damage	Single Vehicle Rollover	0	0
	135.0	14-Jan-1991	Property Damage	Single Vehicle Rollover	0	0
	141.0	1-Oct-1991	Injury	Single Vehicle Rollover	4	0
	146.0	13-Jul-1991	Injury	Ran Off Road	2	0
	169.0	23-Dec-1991	Property Damage	Collision with Fixed Object	0	0
	189.0	1-Jul-1991	Injury	Single Vehicle Rollover	1	0
	189.0	11-Sep-1991	Property Damage	Ran Off Road	0	0
	200.0	13-Oct-1991	Injury	Sideswipe - Opposite Direction	1	0
	211.0	1-Sep-1991	Injury	Single Vehicle Rollover	1	0
	217.0	2-Sep-1991	Property Damage	Single Vehicle Rollover	0	0
	224.0	15-Jan-1991	Property Damage	Head-on	0	0
	230.0	12-Dec-1991	Injury	Single Vehicle Rollover	1	0
	250.0	2-Apr-1991	Property Damage	Sideswipe - Opposite Direction	0	0
	255.0	9-Oct-1991	Property Damage	Single Vehicle Rollover	0	0
	257.0	20-Jun-1991	Injury	Single Vehicle Rollover	1	0
	270.9	28-Aug-1991	Injury	Single Vehicle Rollover	1	0
Summary Highway #8	Property Damage Collisions	Personal Injury Collisions	Fatal Collisions	Total Collisions	Persons Injured	Persons Killed
	12	8	0	20	12	0

Geographic Distribution – Section 11

Access and Winter Roads	Collision Date	Collision Severity	Collision Configuration	#Persons Injured	#Persons Killed	
Aklavik Winter Access Road	6-Feb-1991	Property Damage	Single Vehicle Rollover	0	0	
Aklavik Winter Access Road	26-Apr-1991	Property Damage	Single Vehicle Rollover	0	0	
Dettah Access Road	21-Jan-1991	Property Damage	Animal Strike	0	0	
Dettah Access Road	30-Mar-1991	Property Damage	Other Multi-Vehicle Collision	0	0	
Dettah Access Road	7-Jul-1991	Property Damage	Single Vehicle Rollover	0	0	
Inuvik-Tuktoavaktuk Winter Road	13-Feb-1991	Injury	Single Vehicle Rollover	1	0	
Inuvik-Tuktoavaktuk Winter Road	7-Mar-1991	Injury	Single Vehicle Rollover	1	0	
Inuvik-Tuktoavaktuk Winter Road	23-Mar-1991	Injury	Single Vehicle Rollover	1	0	
Inuvik-Tuktoavaktuk Winter Road	12-Apr-1991	Property Damage	Single Vehicle Rollover	0	0	
Mackenzie Highway Winter Road	20-Feb-1991	Injury	Single Vehicle Rollover	1	0	
Mackenzie Highway Winter Road	22-Feb-1991	Property Damage	Sideswipe - Opposite Direction	0	0	
Mackenzie Highway Winter Road	23-Feb-1991	Injury	Single Vehicle Rollover	5	0	
Mackenzie Highway Winter Road	25-Feb-1991	Injury	Left Turn Across Path	1	0	
Mackenzie Highway Winter Road	5-Mar-1991	Property Damage	Single Vehicle Rollover	0	0	
Mackenzie Highway Winter Road	11-Mar-1991	Property Damage	Sideswipe - Opposite Direction	0	0	
Mackenzie Highway Winter Road	7-Dec-1991	Property Damage	Collision with Fixed Object	0	0	
Mackenzie Highway Winter Road	18-Dec-1991	Property Damage	Single Vehicle Rollover	0	0	
Prelude West Access Road	10-Jun-1991	Property Damage	Head-on	0	0	
Rae Access Road	5-Jan-1991	Property Damage	Single Vehicle Rollover	0	0	
Rae Access Road	13-Apr-1991	Property Damage	Collision with Parked Vehicle	0	0	
Rae Access Road	8-Jun-1991	Property Damage	Single Vehicle Rollover	0	0	
Rae Access Road	11-Aug-1991	Property Damage	Ran Off Road	0	0	
Rae Lakes Winter Access Road	16-Mar-1991	Property Damage	Collision with Fixed Object	0	0	
Salt River Access Road	14-Jul-1991	Property Damage	Other Multi-Vehicle Collision	0	0	
Sandy Lake Access Road	30-Jul-1991	Injury	Single Vehicle Rollover	3	0	
Wha Ti Winter Access Road	10-Mar-1991	Injury	Other Multi-Vehicle Collision	4	0	
Yellowknife Access Road	26-Jan-1991	Property Damage	Other Multi-Vehicle Collision	0	0	
Yellowknife Access Road	15-Jul-1991	Property Damage	Other Multi-Vehicle Collision	0	0	
Yellowknife Access Road	26-Jul-1991	Property Damage	Rear End	0	0	
Yellowknife Access Road	21-Nov-1991	Property Damage	Other Multi-Vehicle Collision	0	0	
Summary Access and Winter Roads	Property Damage Collisions	Personal Injury Collisions	Fatal Collisions	Total Collisions	Persons Injured	Persons Killed
	22	8	0	30	17	0
Summary All NWT Highways	Property Damage Collisions	Personal Injury Collisions	Fatal Collisions	Total Collisions	Persons Injured	Persons Killed
	138	75	3	216	129	3



Appendix A3 – Brief Description of Fatal Collisions

The following is a brief description of the three fatal traffic collisions that took place in the Northwest Territories in 1991, resulting in three fatalities.

RCMP Detachment	Date	Description
Fort Simpson	9-Jun	Single vehicle rollover near Km 395 on Highway #1. Both driver and right front passenger were unrestrained and totally ejected. Driver died at the scene while the passenger was seriously injured. The driver had been drinking.
Rae	29-Jun	A passenger car sideswiped another vehicle in an overtaking manoeuvre near Km 171 on Highway #3. The driver then lost directional control and rolled in ditch. The unrestrained driver sustained fatal injuries while the two passengers suffered minor injuries. The occupants of the vehicle being overtaken were not injured. Both drivers had been drinking.
Yellowknife	1-Aug	Motorcyclist lost control on Km 335 on Highway #3 within Yellowknife city limits. The motorcycle struck a guardrail. The helmeted driver sustained fatal injuries. The driver had been drinking.

