

1996 NWT Traffic Collision Facts

Department of Transportation
Road Licensing and Safety Division
May, 2001

Acknowledgements

This report was prepared by the Road Licensing and Safety Division of the Department of Transportation, Government of the Northwest Territories, in cooperation with the Transportation Planning Division.

If you have any comments or questions related to the content of this report, please contact the Road Licensing and Safety Division at telephone (867) 920-3395, or by facsimile at (867) 873-0120.

1996 QUICK FACTS REPORT

1996 Compared to 1995

	<u>1995</u>	<u>1996</u>	<u>% Change</u>
PROPERTY DAMAGE ONLY COLLISIONS	513	486	-5.3
PERSONAL INJURY COLLISIONS	165	142	-13.9
FATAL COLLISIONS	4	10	150.0
TOTAL REPORTED COLLISIONS	682	638	-6.5
NUMBER OF PERSONS KILLED	4	10	150.0
NUMBER OF PERSONS INJURED	224	207	-7.6
NWT HIGHWAY SYSTEM COLLISIONS	152	126	-17.1
RURAL COLLISIONS	9	5	-44.4
COLLISIONS IN COMMUNITIES	521	507	-2.7
REGISTERED VEHICLES	22,350	22,278	-0.3
LICENSED DRIVERS	23,635	22,297	-5.7
NWT POPULATION [1]	41,500	41,800	0.7
COLLISIONS PER 100 LICENSED DRIVERS	2.89	2.86	-0.8
COLLISIONS PER 100 REGISTERED VEHICLES	3.05	2.86	-6.1
COLLISIONS PER 100 POPULATION	1.64	1.53	-7.1
COLLISIONS INVOLVING ALCOHOL	74	61	-17.6

[1] 1995 and 1996 population from NWT Bureau of Statistics July 1 estimate published in 'Quarterly Report', March 1997.

Introduction

The Traffic Collision Information System (TCIS) is a computer-based system that compiles information on traffic collisions occurring throughout the Northwest Territories. This information is obtained from the motor vehicle collision (MVA) report form that is completed by Royal Canadian Mounted Police detachments in accordance with Section 262 of the Motor Vehicles Act.

TCIS provides valuable information for many traffic collision countermeasure programs. TCIS, the MVA report form, and various collision publications are administered by the GNWT Department of Transportation, Road Licensing and Safety Division. The collection of this valuable data is made possible by the efforts and dedication of the many Royal Canadian Mounted Police officers across the Northwest Territories who complete MVA forms from their collision investigations.

TCIS Definitions

REPORTABLE MOTOR VEHICLE COLLISION - an incident involving one or more motor vehicles resulting in death, personal injury or a minimum of \$1,000 in property damage. TCIS only records reportable motor vehicle collisions which occur on or adjacent to roadways intended for use by the general public. The following is a list of words and terms used in reportable collisions:

INCIDENT - Any set of events not under human control which includes at least one occurrence of injury or damage. It originates when human control is lost and terminates when control is regained, or in the absence of persons who are able to regain control when all persons and property are at rest.

Excluded are events which are known to be the result of deliberate intent, legal intervention or natural disasters. As an example, if a vehicle catches fire due to mechanical failure and the driver is able to stop the car, this is not a traffic collision because control of the vehicle was never lost.

VEHICLE - is any vehicle designed to travel on land that is drawn, propelled or driven by any kind of power, including muscular power, but does not include a device designed to run exclusively on rails.

MOTOR VEHICLE - is a vehicle propelled or driven by power other than by wind, gravity or muscular power and includes a trailer, but does not include:

- (a) an aircraft or a marine vehicle,
- (b) a device that runs or is designed to run exclusively on rails,

- (c) a mechanically propelled wheelchair or mobility device.

PEDESTRIAN - is a person on foot, in a wheelchair or mobility device and includes a child in a carriage or carried by a person on foot, persons on ice skates, skis, roller blades, skate boards and persons pushing or pulling vehicles. A pedestrian does NOT include persons jumping or falling from a vehicle in motion.

DAMAGE - harm to property that reduces the monetary value of that property. It includes harm to animals that have monetary value. It excludes mechanical failure incurred by normal operation such as a tire blow out or broken fan belt.

ROADWAY - any highway, secondary road, rural road, street, avenue, parkway, lane, alley or bridge designed and intended for or used by the general public for the passage of vehicles and pedestrians. This includes sidewalks, boulevards and the immediate right-of-way adjacent to and parallel with the roadway. It also includes winter/ice roads, trails, privately maintained roads, driveways and parking lots on which the general public may travel.

PROPERTY DAMAGE ONLY COLLISION (Property Damage) - a motor vehicle collision resulting in total damages over the prescribed amount as defined in the Motor Vehicles Act (\$1,000) with no personal injuries or deaths.

TRAFFIC INJURY COLLISION (Personal Injury) - a motor vehicle collision resulting in a non-fatal injury to one or more persons. An injury is defined as any bodily harm resulting from the collision.

TRAFFIC FATALITY COLLISION (Fatal) - a motor vehicle collision resulting in death within 30 days to one or more involved persons. Death must be the result of injuries incurred from the collision. This excludes death from natural causes such as heart attacks.

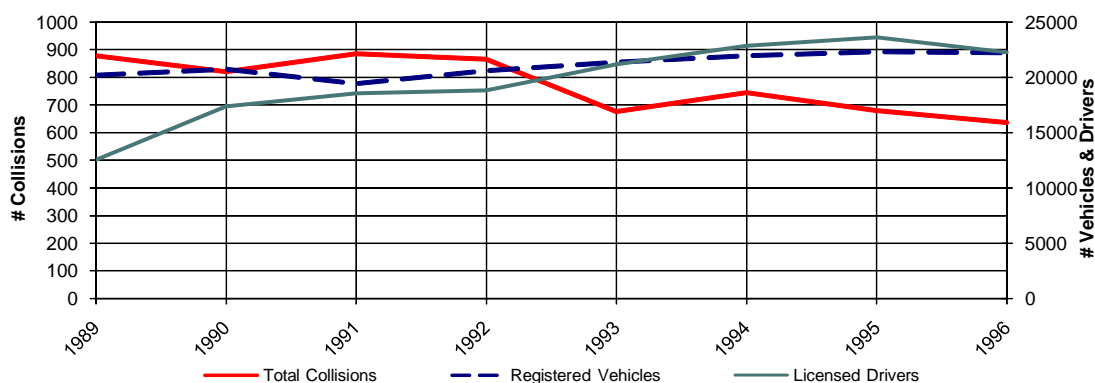
		Page
	Quick Facts - Inside Front Cover	
<u>Section 1</u>	<u>Historical Trends</u>	1
Figure 1.1	Trends in Licensed Drivers, Registered Vehicles and Collisions	1
1.2	Trends in Collision Rates by Vehicles, Drivers and Population	1
1.3	Trends in Injuries and Fatalities	2
1.4	Trends in Property Damage Collisions	2
1.5	Trends in Personal Injury Collisions	3
1.6	Trends in Fatal Collisions	3
1.7	Trends in All Reported Collisions	4
1.8	Property Damage Collisions by Month and Year	4
1.9	Personal Injury Collisions by Month and Year	5
1.10	Fatal Collisions by Month and Year	5
1.11	Total Collisions by Month and Year	6
<u>Section 2</u>	<u>Time of Occurrence</u>	7
Figure 2.1	Personal Injury Collisions by Month of Occurrence	7
2.2	Fatal Collisions by Month of Occurrence	7
2.3	Total Collisions by Month of Occurrence	7
2.4	Collisions and Victims by Month of Occurrence	7
2.5	Total Collisions by Time of Day	7
2.6	Total Collisions by Day of Week	7
2.7	Total Collisions by Time of Day and Day of Week	8
<u>Section 3</u>	<u>Major Contributing Factors</u>	9
Figure 3.1	Collision by Severity Where Human Condition Was a Major Contributing Factor	9
3.2	Collisions by Severity Where Human Action Was a Major Contributing Factor	9
3.3	Collisions by Severity Where Vehicle Condition Was a Major Contributing Factor	9
3.4	Collisions by Severity Where Environmental Condition Was a Major Contributing Factor	10
3.5	Collisions by Severity Where Major Contributing Factor Was Unspecified or Unknown	10
3.6	Major Contributing Factors by Collision Severity	10
3.7	Collisions by Road System Where Human Condition Was a Major Contributing Factor	11
3.8	Collisions by Road System Where Human Action Was a Major Contributing Factor	11
3.9	Collisions by Road System Where Vehicle Condition Was a Major Contributing Factor	11
3.10	Collisions by Road System Where Environmental Condition Was a Major Contributing Factor	12
3.11	Collisions by Road System Where Major Contributing Factor Was Unspecified or Unknown	12
3.12	Major Contributing Factors in Collisions - Communities and NWT Highways	12

<u>Section 4</u>	<u>Environmental Factors</u>	Page 13
Figure	4.1 Collisions by Road Surface Type and Severity	13
	4.2 Collisions by Road Surface Environmental Condition and Severity	13
	4.3 Collisions by Road Defect and Severity	14
	4.4 Collisions by Light Condition and Severity	14
	4.5 Collisions by Weather Condition and Severity	15
	4.6 Collisions by Configuration and Severity	16
	4.7 Collisions by Configuration and Road System	17
	4.8 Collisions by Collision Site and Severity	18
	4.9 Collisions by Collision Site and Road System	18
	4.10 Collisions by Roadway Alignment and Severity	18
	4.11 Collisions by Roadway Type and Severity	19
	4.12 Collisions by Sequence of Events and Severity	19
	4.13 Collisions by Sequence of Events and Road System	20
<u>Section 5</u>	<u>Driver Factors</u>	21
Figure	5.1 Drivers in Collisions and Relative Risk by Driver Age	21
	5.2 Collision Rates by Severity and Driver Age	21
	5.3 Number of Drivers in Collisions by Licence Class and Age	22
	5.4 Number of Drivers in Collisions by Driver Condition and Age	22
	5.5 Number of Drivers in Collisions by Driver Action and Age	23
<u>Section 6</u>	<u>Vehicle Factors</u>	24
Figure	6.1 Number of Vehicles in Collisions by Vehicle Type and Severity	24
	6.2 Number of Vehicles in Collisions by Vehicle Condition and Severity	24
	6.3 Number of Vehicles in Collisions by Vehicle Manoeuvre and Severity	25
	6.4 Number of Vehicles in Collisions by Vehicle Year and Severity	25
<u>Section 7</u>	<u>Victims and Occupant Restraints</u>	26
Figure	7.1 Fatalities Classification	26
	7.2 Injuries Classification	26
	7.3 Persons Injured by Road User Class and Age Group	27
	7.4 Persons Killed by Road User Class and Age Group	27
	7.5 Persons Injured or Killed by Road User Class and Gender	27
	7.6 Motor Vehicle Occupants by Injury Severity and Restraint Use	28
	7.7 Restraints Used/Not Used	28
	7.8 Motor Vehicle Occupants by Injury Severity and Age Group	29
	7.9 Victim Restraint Use Rate by Victim Age	29

		Page
<u>Section 8</u>	<u>Pedestrians</u>	30
Figure	8.1 Pedestrians Injured or Killed by Age Group	30
	8.2 Pedestrians Injured or Killed by Pedestrian Action and Age Group	30
	8.3 Pedestrians Injured or Killed by Place of Occurrence and Injury Severity	30
	8.4 Pedestrians Injured or Killed by Collision Site	31
	8.5 Pedestrians Injured or Killed by Pedestrian Condition	31
<u>Section 9</u>	<u>Alcohol</u>	32
Figure	9.1 Drinking Drivers in Collisions by Driver Age and Gender	32
	9.2 Collisions Involving Alcohol by Day of Week	32
	9.3 Percentage of Collisions Involving Alcohol by Year and Severity	32
	9.4 Number of Collisions and Victims Involving Alcohol	32
	9.5 Number of Alcohol Related Collisions by Time of Day	33
	9.6 Injury Severity by Alcohol Involvement	33
	9.7 Alcohol-Involved Collisions by Month	33
<u>Section 10</u>	<u>Off-Road Vehicles</u>	34
Figure	10.1 Off-Road Vehicle Collisions by Month and Severity	34
	10.2 Off-Road Vehicle Collisions by Vehicle Type	34
	10.3 Off-Road Vehicle Drivers in Collisions by Driver Age & Gender	35
	10.4 Off-Road Vehicle Drivers in Collisions by Driver Condition and Severity	35
	10.5 Off-Road Vehicle Drivers in Collisions by Driver Action & Severity	36
	10.6 Off-Road Vehicle Occupants by Injury Severity and Helmet Use	36
<u>Section 11</u>	<u>Geographic Distribution</u>	37
Figure	11.1 Collisions by Region, RCMP Detachment and Severity	37
	11.2 Collision Rates by Region and RCMP Detachment	38
	11.3 Collisions on the NWT Highway System	39
	11.4 Collisions on the NWT Highway System - Map	44
	11.5 Collision Rates on the NWT Highway System - Map	45
<u>Appendix</u>		46
Section	A1 Northwest Territories Motor Vehicle Collision (MVA) Report Form	46
	A2 Northwest Territories MVA Report Form Template	47
	A3 Brief Description of Fatal Collisions	48

Trends in Licensed Drivers, Registered Vehicles and Collisions

Figure 1.1

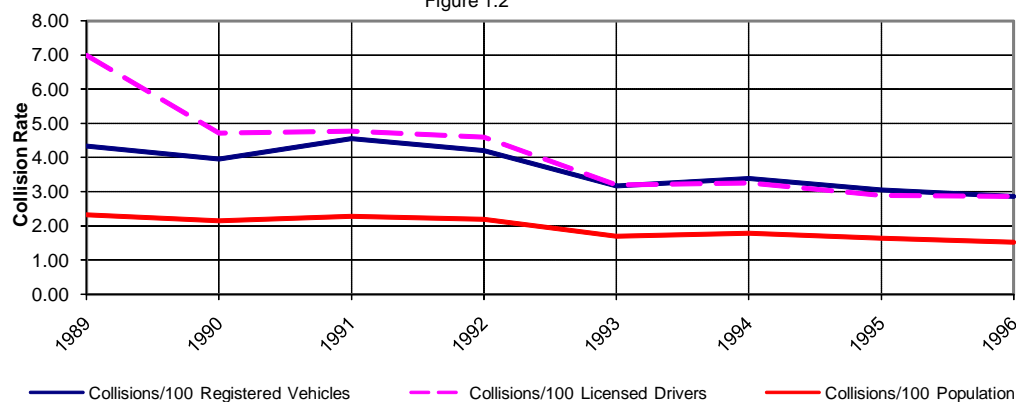


3 Year Summary

	1994	1995	1996	% Change
Registered Vehicles	22,000	22,350	22,278	-0.3
Licensed Drivers	22,853	23,635	22,297	-5.7
Total Collisions	745	682	638	-6.5

Trends in Collision Rates by Vehicles, Drivers and Population

Figure 1.2

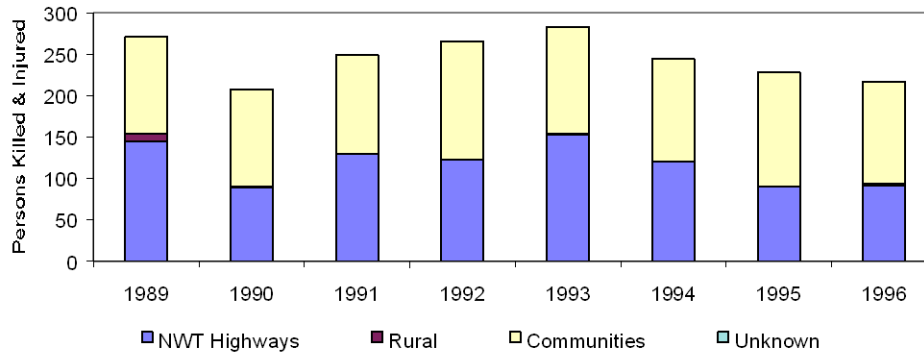


3 Year Summary

	1994	1995	1996	% Change
Collisions/100 Registered Vehicles	3.39	3.05	2.86	-6.1
Collisions/100 Licensed Drivers	3.26	2.89	2.86	-0.8
Collisions/100 Population	1.79	1.64	1.53	-7.1

Trends in Injuries & Fatalities

Figure 1.3

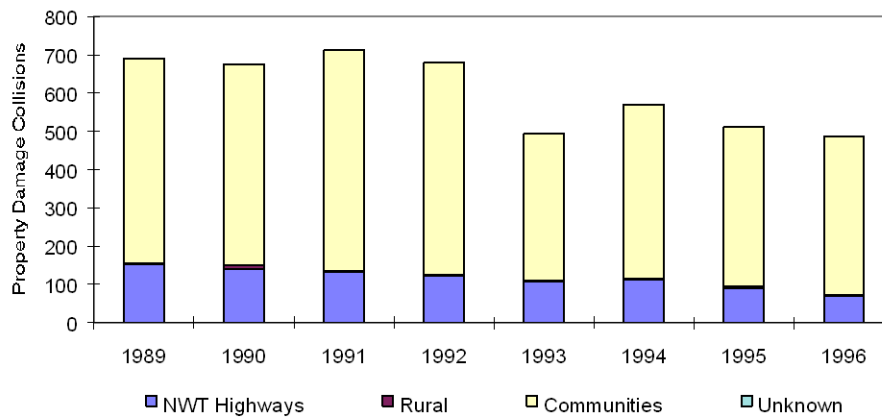


3 Year Summary

	Persons Injured					Persons Killed			
	1994	1995	1996	% Change		1994	1995	1996	% Change
NWT Highways	86	89	85	-4.5	2	4	6	50.0	
Rural	0	1	2	100.0	0	0	0	-	
Communities	155	134	120	-10.4	1	0	4	-	
Total	241	224	207	-7.6	3	4	10	150.0	

Trends in Property Damage Collisions

Figure 1.4

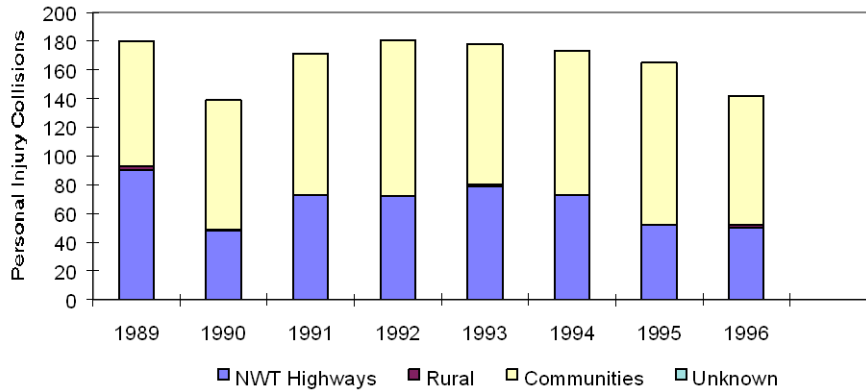


3 Year Summary

	Property Damage Collisions			
	1994	1995	1996	% Change
NWT Highways	125	94	70	-25.5
Rural	6	8	3	-62.5
Communities	439	411	413	0.5
Total	570	513	486	-5.3

Trends in Personal Injury Collisions

Figure 1.5

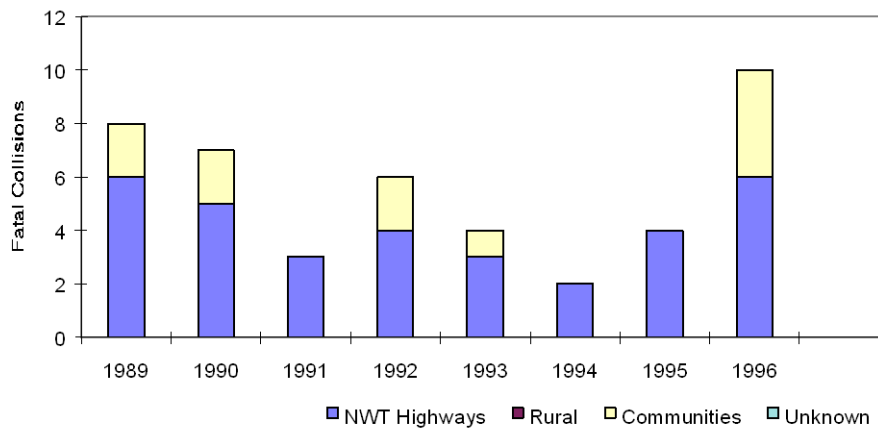


3 Year Summary

	Personal Injury Collisions			
	1994	1995	1996	% Change
NWT Highways	50	54	50	-7.4
Rural	0	1	2	100.0
Communities	123	110	90	-18.2
Total	173	165	142	-13.9

Trends in Fatal Collisions

Figure 1.6

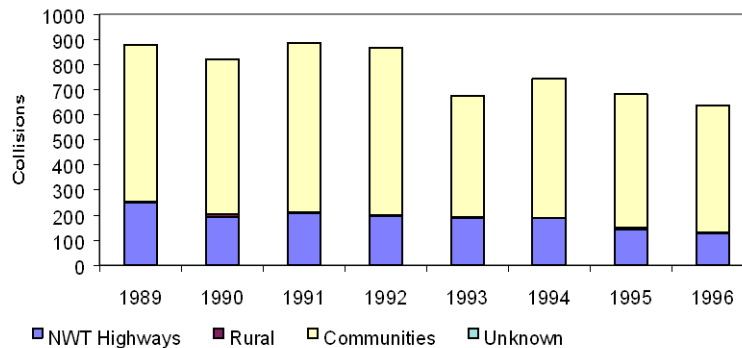


3 Year Summary

	Fatal Collisions			
	1994	1995	1996	% Change
NWT Highways	1	4	6	50.0
Rural	0	0	0	-
Communities	1	0	4	-
Total	2	4	10	150.0

Trends in All Reported Collisions

Figure 1.7



3 Year Summary

	1994	1995	1996	% Change
NWT Highways	176	152	126	-17.1
Rural	6	9	5	-44.4
Communities	563	521	507	-2.7
Total	745	682	638	-6.5

Property Damage Collisions by Month and Year

Figure 1.8

Month	1989	1990	1991	1992	1993	1994	1995	Avg. 89 to 95	1996	% Change*
January	66	63	86	74	46	52	50	62	54	-13.5
February	66	66	72	68	56	72	46	64	59	-7.4
March	65	68	72	68	52	50	78	65	56	-13.5
April	51	30	48	59	30	32	32	40	31	-23.0
May	39	29	31	45	23	33	31	33	26	-21.2
June	39	44	57	35	23	31	24	36	32	-11.5
July	47	51	57	48	33	39	38	45	36	-19.5
August	47	54	42	51	35	42	39	44	24	-45.8
September	41	46	49	48	39	34	29	41	29	-29.0
October	76	69	65	65	52	59	38	61	56	-7.5
November	84	71	59	64	53	73	49	65	42	-35.1
December	70	84	74	54	53	53	59	64	41	-35.8
Total	691	675	712	679	495	570	513	619	486	-21.5

* % change is a comparison between 1996 and the 1989-95 average.

Personal Injury Collisions by Month and Year

Figure 1.9

Month	1989	1990	1991	1992	1993	1994	1995	Avg. 89 to 95	1996	% Change*
January	13	8	15	19	16	11	16	14	15	7.1
February	17	8	13	12	16	7	14	12	15	20.7
March	14	15	17	12	16	9	20	15	10	-32.0
April	3	6	5	9	13	6	12	8	7	-9.3
May	11	5	16	12	13	9	11	11	7	-36.4
June	12	20	24	18	17	18	15	18	10	-43.5
July	26	20	23	15	24	18	15	20	16	-20.6
August	17	14	16	18	9	23	18	16	11	-33.0
September	16	8	13	19	12	14	11	13	14	5.4
October	18	15	14	16	16	20	10	16	15	-3.7
November	19	7	5	13	14	19	12	13	9	-29.2
December	14	13	10	18	12	19	11	14	13	-6.2
Total	180	139	171	181	178	173	165	170	142	-16.3

Fatal Collisions by Month and Year

Figure 1.10

Month	1989	1990	1991	1992	1993	1994	1995	Avg. 89 to 95	1996	% Change*
January	0	1	0	0	0	0	0	0.1	0	-100.0
February	0	0	0	0	0	0	0	0.0	0	-
March	0	0	0	0	1	0	0	0.1	2	1300.0
April	1	1	0	1	1	0	1	0.7	1	40.0
May	1	0	0	0	0	1	0	0.3	1	250.0
June	3	0	2	3	0	0	0	1.1	1	-12.5
July	1	2	0	0	1	0	1	0.7	1	40.0
August	0	0	1	0	0	0	0	0.1	3	2000.0
September	0	0	0	0	0	0	1	0.1	0	-100.0
October	0	2	0	1	0	1	0	0.6	1	75.0
November	1	0	0	1	1	0	1	0.6	0	-100.0
December	1	1	0	0	0	0	0	0.3	0	-100.0
Total	8	7	3	6	4	2	4	4.9	10	105.9

* % change is a comparison between 1996 and the 1989-95 average.

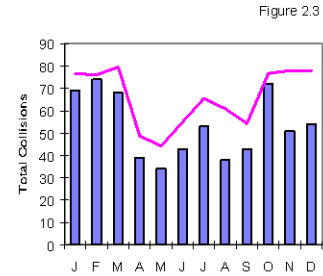
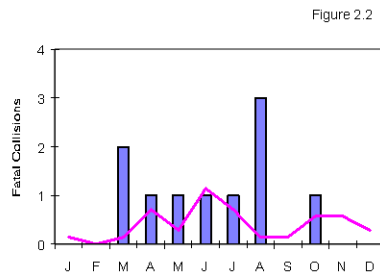
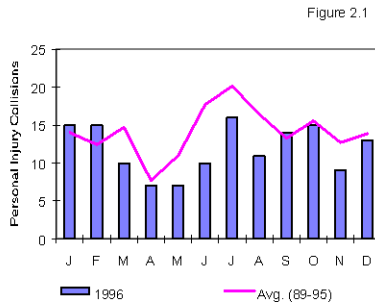
Total Collisions by Month and Year

Figure 1.11

Month	1989	1990	1991	1992	1993	1994	1995	Avg. 89 to 95	1996	% Change*
January	79	72	101	93	62	63	66	77	69	-9.9
February	83	74	85	80	72	79	60	76	74	-2.8
March	79	83	89	80	69	59	98	80	68	-14.5
April	55	37	53	69	44	38	45	49	39	-19.9
May	51	34	47	57	36	43	42	44	34	-23.2
June	54	64	83	56	40	49	39	55	43	-21.8
July	74	73	80	63	58	57	54	66	53	-19.2
August	64	68	59	69	44	65	57	61	38	-37.6
September	57	54	62	67	51	48	41	54	43	-20.8
October	94	86	79	82	68	80	48	77	72	-6.1
November	104	78	64	78	68	92	62	78	51	-34.6
December	85	98	84	72	65	72	70	78	54	-30.8
Total	879	821	886	866	677	745	682	794	638	-19.6

* % change is a comparison between 1996 and the 1989-95 average.

Collisions by Month of Occurrence



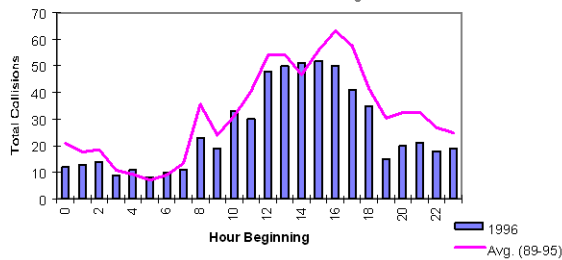
Collisions & Victims by Month of Occurrence

Figure 2.4

Month	Number of Collisions				Number of Victims	
	Property Damage	Personal Injury	Fatal	Total	Injured	Killed
January	54	15	0	69	19	0
February	59	15	0	74	22	0
March	56	10	2	68	17	2
April	31	7	1	39	12	1
May	26	7	1	34	9	1
June	32	10	1	43	16	1
July	36	16	1	53	26	1
August	24	11	3	38	17	3
September	29	14	0	43	20	0
October	56	15	1	72	21	1
November	42	9	0	51	12	0
December	41	13	0	54	16	0
Total	486	142	10	638	207	10

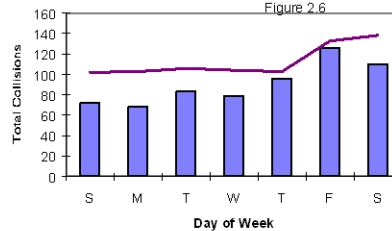
Total Collisions by Time of Day

Figure 2.5



Total Collisions by Day of Week

Figure 2.6



Time of Occurrence – Section 2

Collisions by Time of Day & Day of Week*

Figure 2.7

Collision Hour	Sunday	Monday	Tuesday	Wednesday	Thursday	Friday	Saturday	Total	%
12 to 1 a.m.	3	0	1	1	2	3	2	12	1.9
1 to 2 a.m.	0	1	1	1	1	3	6	13	2.1
2 to 3 a.m.	3	1	1	2	0	1	6	14	2.2
3 to 4 a.m.	2	3	1	0	0	2	1	9	1.4
4 to 5 a.m.	5	1	0	0	0	3	2	11	1.7
5 to 6 a.m.	3	1	0	0	1	0	3	8	1.3
6 to 7 a.m.	3	1	2	1	1	2	0	10	1.6
7 to 8 a.m.	3	0	3	2	1	1	1	11	1.7
8 to 9 a.m.	2	2	5	2	3	6	3	23	3.6
9 to 10 a.m.	1	1	4	1	6	3	3	19	3.0
10 to 11 a.m.	5	1	5	6	5	5	6	33	5.2
11 to 12 a.m.	2	4	6	4	2	7	5	30	4.7
12 to 1 p.m.	6	2	4	9	11	11	5	48	7.6
1 to 2 p.m.	1	11	8	4	5	14	7	50	7.9
2 to 3 p.m.	7	3	5	6	9	7	14	51	8.0
3 to 4 p.m.	2	8	9	6	9	10	8	52	8.2
4 to 5 p.m.	2	7	7	5	11	11	7	50	7.9
5 to 6 p.m.	6	4	5	9	8	3	6	41	6.5
6 to 7 p.m.	4	5	3	4	5	8	6	35	5.5
7 to 8 p.m.	2	0	0	2	2	7	2	15	2.4
8 to 9 p.m.	3	4	3	6	3	0	1	20	3.2
9 to 10 p.m.	2	3	2	2	2	4	6	21	3.3
10 to 11 p.m.	2	0	2	3	3	3	5	18	2.8
11 to 12 p.m.	1	2	2	0	2	10	2	19	3.0
Not Stated	2	3	4	3	4	2	3	21	3.3
Total	72	68	83	79	96	126	110	634	
%	11.4	10.7	13.1	12.5	15.1	19.9	17.4	100.0	

* Excludes collisions in which Day of Week was unknown.

Major Contributing Factors – Section 3

Collisions by Severity Where Human Condition Was a Major Contributing Factor

Figure 3.1

Human Condition	Property Damage	Personal Injury	Fatal	% of Total	
				Total	Factors
Fatigued, Fell Asleep	0	0	0	0	0.0
Inexperience	0	0	0	0	0.0
Under Influence - Alcohol	12	10	4	26	4.1
Under Influence - Drugs	0	0	0	0	0.0
Sudden Illness, Lost Consciousness	1	0	0	1	0.2
Other Driver Condition	0	0	0	0	0.0
Total	13	10	4	27	4.2

Collisions by Severity Where Human Action Was a Major Contributing Factor

Figure 3.2

Human Action	Property Damage	Personal Injury	Fatal	% of Total	
				Total	Factors
Following Too Closely	29	8	0	37	5.8
Distracted, Inattentive	0	0	0	0	0.0
Driving Too Fast for Conditions	35	13	1	49	7.7
Improper Turning or Passing	15	1	0	16	2.5
Failed to Yield Right-of-Way	46	27	0	73	11.4
Disobeyed Traffic Control/Officer	6	1	0	7	1.1
Driving on Wrong Side of Road	2	0	0	2	0.3
Driving in Wrong Direction	0	0	0	0	0.0
Backing Unsafely	86	3	1	90	14.1
Lost Control	107	52	3	162	25.4
Other Driver Action	0	0	0	0	0.0
Total	326	105	5	436	68.3

Collisions by Severity Where Vehicle Condition Was a Major Contributing Factor

Figure 3.3

Vehicle Condition	Property Damage	Personal Injury	Fatal	% of Total	
				Total	Factors
Defective Brakes	0	1	0	1	0.2
Defective Steering	0	0	0	0	0.0
Defective Lights	0	0	0	0	0.0
Tire Blown Out	0	1	0	1	0.2
Unsecured Load, Spilled Load	0	0	0	0	0.0
Oversized Load, Overload	0	0	0	0	0.0
Visibility Obstructed	5	0	0	5	0.8
Other Vehicle Contributing Factor	6	1	0	7	1.1
Total	11	3	0	14	2.2

Major Contributing Factors – Section 3

Collisions by Severity Where Environmental Condition Was a Major Contributing Factor

Figure 3.4

Environmental Condition	Property Damage	Personal Injury	Fatal	% of Total	
				Total	Factors
Animal on Roadway	7	2	0	9	1.4
Road Surface or Condition	19	2	0	21	3.3
Obstruction/Debris on Road	0	1	0	1	0.2
View Obstructed, Glare, Reflection	3	0	0	3	0.5
Weather or Other Acts of God	8	0	0	8	1.3
Other Environmental Factor	0	0	0	0	0.0
Total	37	5	0	42	6.6

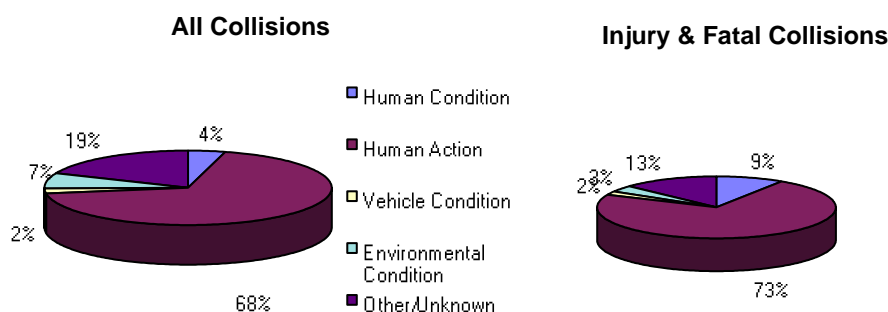
Collisions by Severity Where Major Contributing Factor Was Unspecified or Unknown

Figure 3.5

Factor	Property Damage	Personal Injury	Fatal	% of Total	
				Total	Factors
Unspecified	29	16	1	46	7.2
Unknown	70	3	0	73	11.4
Total	99	19	1	119	18.7
Total All Factors	486	142	10	638	100.0

Major Contributing Factors by Collision Severity

Figure 3.6



TAIS recognizes that a collision is usually the result of a chain of events. The collision data system accepts up to four contributing factors for each vehicle involved in a collision. During the analysis of collisions, knowledge of the factors is important. By removing any one of the factors, the collision may be avoided.

An example: Because of inattention, a driver may have failed to see a stop sign behind some trees and thereby reduced his/her stopping time. The car's brakes, being in poor condition, caused the car to spin out of control on ice and collide with another vehicle that was speeding through the intersection. The collision may not have occurred if any of these factors were not present.

Major Contributing Factors – Section 3

Collisions by Road System Where Human Condition Was a Major Contributing Factor

Figure 3.7

Human Condition	NWT			% of Total	
	Highways	Cummunities	Rural	Total	Factors
Fatigued, Fell Asleep	0	0	0	0	0.0
Inexperience	0	0	0	0	0.0
Under Influence - Alcohol	7	19	0	26	4.1
Under Influence - Drugs	0	0	0	0	0.0
Sudden Illness, Lost Consciousness	0	1	0	1	0.2
Other Driver Condition	0	0	0	0	0.0
Total	7	20	0	27	4.2

Collisions by Road System Where Human Action Was a Major Contributing Factor

Figure 3.8

Human Action	NWT			% of Total	
	Highways	Cummunities	Rural	Total	Factors
Following Too Closely	1	36	0	37	5.8
Distracted, Inattentive	0	0	0	0	0.0
Driving Too Fast for Conditions	10	39	0	49	7.7
Improper Turning or Passing	3	13	0	16	2.5
Failed to Yield Right-of-Way	5	68	0	73	11.4
Disobeyed Traffic Control/Officer	0	7	0	7	1.1
Driving on Wrong Side of Road	0	2	0	2	0.3
Driving in Wrong Direction	0	0	0	0	0.0
Backing Unsafely	2	88	0	90	14.1
Lost Control	78	83	1	162	25.4
Other Driver Action	0	0	0	0	0.0
Total	99	336	1	436	68.3

Collisions by Road System Where Vehicle Condition Was a Major Contributing Factor

Figure 3.9

Vehicle Condition	NWT			% of Total	
	Highways	Cummunities	Rural	Total	Factors
Defective Brakes	0	1	0	1	0.2
Defective Steering	0	0	0	0	0.0
Defective Lights	0	0	0	0	0.0
Tire Blown Out	1	0	0	1	0.2
Unsecured Load, Spilled Load	0	0	0	0	0.0
Oversized Load, Overload	0	0	0	0	0.0
Visibility Obstructed	0	4	1	5	0.8
Other Vehicle Contributing Factor	2	5	0	7	1.1
Total	3	10	1	14	2.2

Major Contributing Factors – Section 3

Collisions by Road System Where Environmental Condition Was a Major Contributing Factor

Figure 3.10

<u>Environmental Condition</u>	<u>NWT</u>			<u>% of Total</u>	
	<u>Highways</u>	<u>In Communities</u>	<u>Rural</u>	<u>Total</u>	<u>Factors</u>
Animal on Roadway	9	0	0	9	1.4
Road Surface or Condition	1	19	1	21	3.3
Obstruction/Debris on Road	0	1	0	1	0.2
View Obstructed, Glare, Reflection	0	3	0	3	0.5
Weather or Other Acts of God	3	5	0	8	1.3
Other Environmental Factor	0	0	0	0	0.0
Total	13	28	1	42	6.6

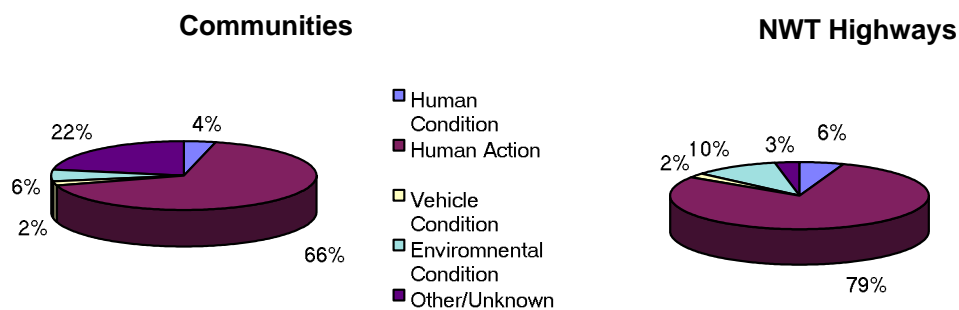
Collisions by Road System Where Major Contributing Factor Was Unspecified or Unknown

Figure 3.11

<u>Factor</u>	<u>NWT</u>			<u>% of Total</u>	
	<u>Highways</u>	<u>In Communities</u>	<u>Rural</u>	<u>Total</u>	<u>Factors</u>
Unspecified	4	41	1	46	7.2
Unknown	0	72	1	73	11.4
Total	4	113	2	119	18.7
Total All Factors	126	507	5	638	100.0

Major Contributing Factors in Collisions - Communities and NWT Highways

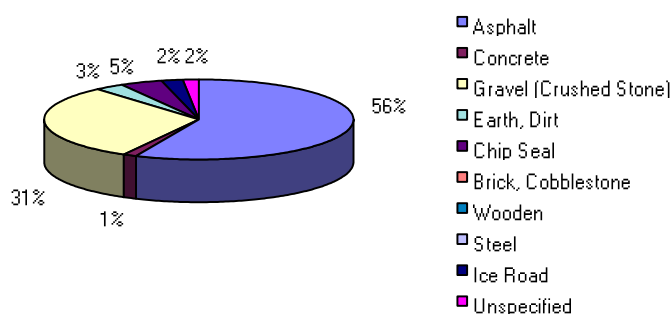
Figure 3.12



Collisions by Road Surface Type and Severity

Figure 4.1

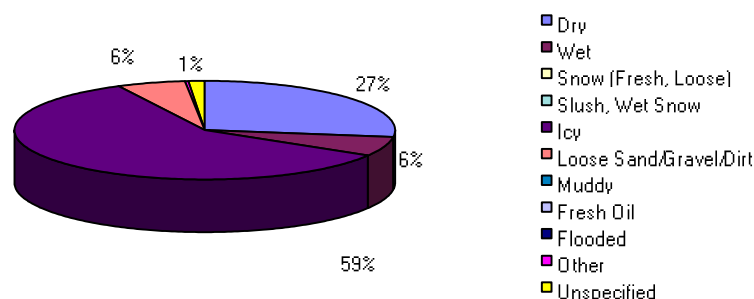
Road Surface Type	Property Damage	Personal Injury	Fatal	Total	%
Asphalt	294	66	2	362	56.7
Concrete	8	0	0	8	1.3
Gravel (Crushed Stone)	135	54	6	195	30.6
Earth, Dirt	15	4	0	19	3.0
Chip Seal	18	10	1	29	4.5
Brick, Cobblestone	0	0	0	0	0.0
Wooden	0	0	0	0	0.0
Steel	0	0	0	0	0.0
Ice Road	6	8	1	15	2.4
Unspecified	10	0	0	10	1.6
Total	486	142	10	638	100.0



Collisions by Road Surface Environmental Condition and Severity

Figure 4.2

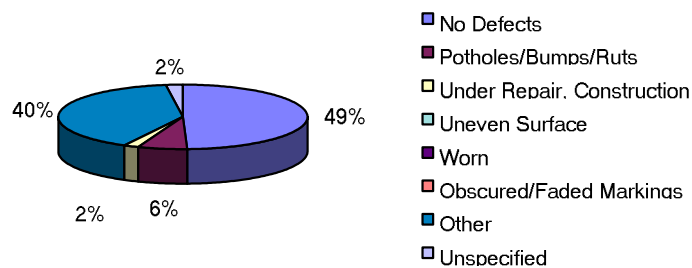
Surface Condition	Property Damage	Personal Injury	Fatal	Total	%
Dry	127	43	4	174	27.3
Wet	27	11	2	40	6.3
Snow (Fresh, Loose)	0	0	0	0	0.0
Slush, Wet Snow	0	0	0	0	0.0
Icy	300	73	3	376	58.9
Loose Sand/Gravel/Dirt	22	15	1	38	6.0
Muddy	0	0	0	0	0.0
Fresh Oil	0	0	0	0	0.0
Flooded	0	0	0	0	0.0
Other	1	0	0	1	0.2
Unspecified	9	0	0	9	1.4
Total	486	142	10	638	100



Collisions by Road Defect and Severity

Figure 4.3

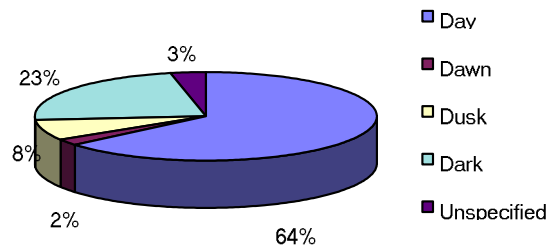
Road Defect	Property Damage	Personal Injury	Fatal	Total	%
No Defects	246	63	6	315	49.4
Potholes/Bumps/Ruts	22	19	0	41	6.4
Under Repair, Construction	11	2	0	13	2.0
Uneven Pavement Surface	0	0	0	0	0.0
Worn	0	0	0	0	0.0
Obscured or Faded Markings	0	0	0	0	0.0
Other	194	56	4	254	39.8
Unspecified	13	2	0	15	2.4
Total	486	142	10	638	100.0



Collisions by Light Condition and Severity

Figure 4.4

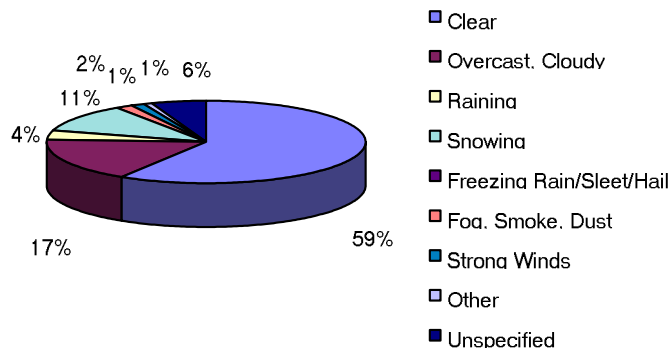
Light Condition	Property Damage	Personal Injury	Fatal	Total	%
Day	322	84	2	408	63.9
Dawn	9	3	1	13	2.0
Dusk	32	15	1	48	7.5
Dark	102	40	6	148	23.2
Unspecified	21	0	0	21	3.3
Total	486	142	10	638	100.0



Collisions by Weather Condition and Severity

Figure 4.5

Weather Condition	Property Damage	Personal Injury	Fatal	Total	%
Clear (Sunny)	287	86	3	376	58.9
Overcast, Cloudy (No Precipitation)	73	29	5	107	16.8
Raining	16	6	2	24	3.8
Snowing	57	14	0	71	11.1
Freezing Rain/Sleet/Hail	0	0	0	0	0.0
Visibility Limitations (fog, dust, etc.)	8	3	0	11	1.7
Strong Winds	8	0	0	8	1.3
Other	3	2	0	5	0.8
Unspecified	34	2	0	36	5.6
Total	486	142	10	638	100.0



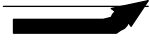


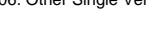
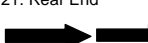
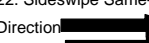
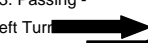
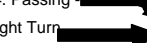
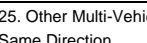
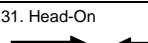
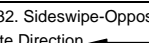
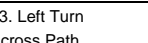
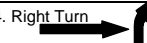
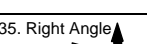
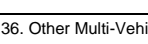
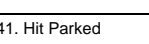
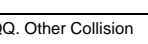
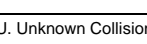


Collisions by Configuration and Severity

Figure 4.6

Configuration*	Property Damage	Personal Injury	Fatal	Total	% of Total
01. Hit Moving Object					
a) With Animal	7	2	0	9	1.4
b) With Pedestrian	1	21	3	25	3.9
c) Other	2	0	0	2	0.3
02. Hit Stationary Object	53	13	0	66	8.9
03. Off Road Left					
a) With Rollover	9	9	4	22	3.4
b) No Rollover	4	4	0	8	1.3
04. Off Road Right					
a) With Rollover	20	25	1	46	7.2
b) No Rollover	12	7	0	19	3.0
05. Rollover on Roadway	0	0	0	0	0.0
06. Other Single Vehicle	0	0	0	0	0.0
21. Rear End	64	21	0	85	13.3
22. Sideswipe - Same Direction	10	1	0	11	1.7
23. Passing - Left Turn	4	1	0	5	0.8
24. Passing - Right Turn	2	0	0	2	0.3
25. Other Multi-Vehicle Same Direction	0	0	0	0	0.0
31. Head-On	7	5	0	12	1.9
32. Sideswipe - Opposite Direction	22	2	0	24	3.8
33. Left Turn Across Path	9	5	0	14	2.2
34. Right Turn Including Conflict	7	1	0	8	1.3
35. Right Angle	63	17	0	80	12.5
36. Other Multi-Vehicle Opposite Direction	31	4	0	35	5.5
41. Hit Parked Vehicle	153	3	1	157	24.6
QQ. Other Collision Type	3	1	1	5	0.8
UU. Unknown Collision Type	3	0	0	3	0.5
Total	486	142	10	638	100.0

***Collision Configurations**



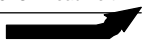


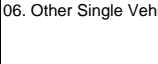
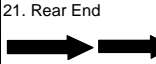
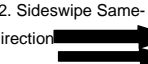
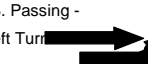
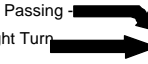
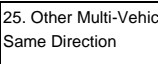
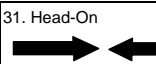
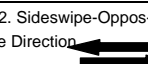
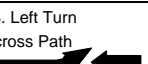
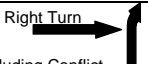
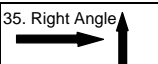
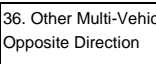

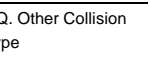
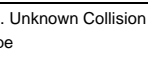
01. Hit Moving Object 	02. Hit Stationary Object 	03. Off Road Left 	04. Off Road Right 	05. Rollover on Roadway 
06. Other Single Vehicle 	21. Rear End 	22. Sideswipe Same-Direction 	23. Passing - Left Turn 	24. Passing - Right Turn 
25. Other Multi-Vehicle Same Direction 	31. Head-On 	32. Sideswipe-Opposite Direction 	33. Left Turn Across Path 	34. Right Turn Including Conflict 
35. Right Angle 	36. Other Multi-Vehicle Opposite Direction 	41. Hit Parked Vehicle 	QQ. Other Collision Type 	UU. Unknown Collision Type 

Collisions by Configuration and Road System

Figure 4.7

Configuration*	NWT Highways	In Communities	Rural	Total	% of Total
01. Hit Moving Object					
a) With Animal	9	0	0	9	1.4
b) With Pedestrian	3	22	0	25	3.9
c) Other	0	1	1	2	0.3
02. Hit Stationary Object	13	52	1	66	10.3
03. Off Road Left					
a) With Rollover	15	7	0	22	3.4
b) No Rollover	5	3	0	8	1.3
04. Off Road Right					
a) With Rollover	39	7	0	46	7.2
b) No Rollover	14	5	0	19	3.0
05. Rollover on Roadway	0	0	0	0	0.0
06. Other Single Vehicle	0	0	0	0	0.0
21. Rear End	6	79	0	85	13.3
22. Sideswipe - Same Direction	0	11	0	11	1.7
23. Passing - Left Turn	3	2	0	5	0.8
24. Passing - Right Turn	0	2	0	2	0.3
25. Other Multi-Vehicle Same Direction	0	0	0	0	0.0
31. Head-On	3	9	0	12	1.9
32. Sideswipe - Opposite Direction	6	16	2	24	3.8
33. Left Turn Across Path	2	12	0	14	2.2
34. Right Turn Including Conflict	0	8	0	8	1.3
35. Right Angle	2	78	0	80	12.5
36. Other Multi-Vehicle Opposite Direction	1	34	0	35	5.5
41. Hit Parked Vehicle	3	154	0	157	24.6
QQ. Other Collision Type	2	2	1	5	0.8
UU. Unknown Collision Type	0	3	0	3	0.5
Total	126	507	5	638	100.0

***Collision Configurations**

01. Hit Moving Object 	02. Hit Stationary Object 	03. Off Road Left 	04. Off Road Right 	05. Rollover on Roadway 
06. Other Single Vehicle 	21. Rear End 	22. Sideswipe Same-Direction 	23. Passing - Left Turn 	24. Passing - Right Turn 
25. Other Multi-Vehicle Same Direction 	31. Head-On 	32. Sideswipe-Opposite Direction 	33. Left Turn Across Path 	34. Right Turn Including Conflict 
35. Right Angle 	36. Other Multi-Vehicle Opposite Direction 	41. Hit Parked Vehicle 	QQ. Other Collision Type 	UU. Unknown Collision Type 

Collisions by Collision Site and Severity

Figure 4.8

Collision Site	Property Damage	Personal Injury	Fatal	Total	%
Non-Intersection	179	86	9	274	42.9
Intersection - Two Public Roadways	124	35	0	159	24.9
Intersection - Parking Lot, Driveway	57	14	1	72	11.3
Railroad Level Crossing	0	0	0	0	0.0
Bridge, Overpass, Viaduct	3	4	0	7	1.1
Tunnel, Underpass	0	0	0	0	0.0
Passing, Climbing Lane	0	0	0	0	0.0
Ramp	3	0	0	3	0.5
Other	114	3	0	117	18.3
Unknown	6	0	0	6	0.9
Total	486	142	10	638	100.0

Collisions by Collision Site and Road System

Figure 4.9

Collision Site	NWT Highways	In Communities	Rural	Total	%
Non-Intersection	107	163	4	274	42.9
Intersection - Two Public Roadways	13	146	0	159	24.9
Intersection - Parking Lot, Driveway	0	72	0	72	11.3
Railroad Level Crossing	0	0	0	0	0.0
Bridge, Overpass, Viaduct	5	2	0	7	1.1
Tunnel, Underpass	0	0	0	0	0.0
Passing, Climbing Lane	0	0	0	0	0.0
Ramp	1	2	0	3	0.5
Other	0	116	1	117	18.3
Unknown	0	6	0	6	0.9
Total	126	507	5	638	100.0

Collisions by Roadway Alignment and Severity

Figure 4.10

Road Alignment	Property Damage	Personal Injury	Fatal	Total	%
Straight & Level	349	91	6	446	69.9
Straight with Grade	48	17	1	66	10.3
Curved and Level	47	21	1	69	10.8
Curve with Grade	22	9	2	33	5.2
Top of Hill or Grade	10	3	0	13	2.0
Bottom of Hill or Grade	0	0	0	0	0.0
Other	2	0	0	2	0.3
Unknown	8	1	0	9	1.4
Total	486	142	10	638	100.0

Collisions by Roadway Type and Severity

Figure 4.11

Road Type	Property Damage	Personal Injury	Fatal	Total	%
One-Way Two Lane	11	1	0	12	1.9
One-Way Multi Lane	0	0	0	0	0.0
Undivided Two-Way Two Lane	323	126	9	458	71.8
Undivided Two-Way Multi Lane	0	0	0	0	0.0
Divided Barrier Median	16	4	0	20	3.1
Divided with Median No Barrier	0	0	0	0	0.0
Divided Divider Unspecified	13	4	0	17	2.7
Other	116	7	1	124	19.4
Unknown	7	0	0	7	1.1
Total	486	142	10	638	100.0

Collision Sequence of Events by Severity

Figure 4.12

Non-Moving Objects	Property Damage	Personal Injury	Fatal	Total	%
Hit Parked Trailer	0	0	0	0	0.0
Hit Non-Fixed Object	0	0	0	0	0.0
Hit Building	4	3	0	7	1.1
Hit Ditch	2	1	0	3	0.5
Hit Embankment Dirt Pile Rock	6	1	0	7	1.1
Hit Culvert End Drainage Structure	0	0	0	0	0.0
Hit Tree Bush Hedge	2	1	0	3	0.5
Hit Utility Pole Lamp Pole	16	6	0	22	3.4
Hit Curb	5	0	0	5	0.8
Hit Post	3	0	0	3	0.5
Hit Traffic Barrier	12	0	0	12	1.9
Hit Fixed Object Part of Road Structure	0	0	0	0	0.0
Hit Fixed Object NOT Part of Road Structure	1	0	0	1	0.2
Hit Other Type Fixed Object	1	1	0	2	0.3
Sub Total Fixed Objects	52	13	0	65	10.2
Moveable Objects					
Another Road Vehicle	372	60	1	433	67.9
Animal	7	2	0	9	1.4
Pedestrian	1	21	3	25	3.9
Other Moveable Object	2	0	0	2	0.3
Sub Total Moveable Objects	382	83	4	469	73.5
Non-Collision Events					
Ran Off Road	16	11	0	27	4.2
Rollover	29	34	5	68	10.7
Jack Knife or Trailer Swing	0	0	0	0	0.0
Fire or Explosion	0	0	0	0	0.0
Load Spill	0	0	0	0	0.0
Load Shift	0	0	0	0	0.0
Submersion	0	0	0	0	0.0
Other Non-Collision Event	0	0	0	0	0.0
Sub Total Non-Collision Events	45	45	5	95	14.9
Other/Unknown Event	7	1	1	9	1.4
Grand Total	486	142	10	638	100.0

Collision Sequence of Events by Road System

Figure 4.13

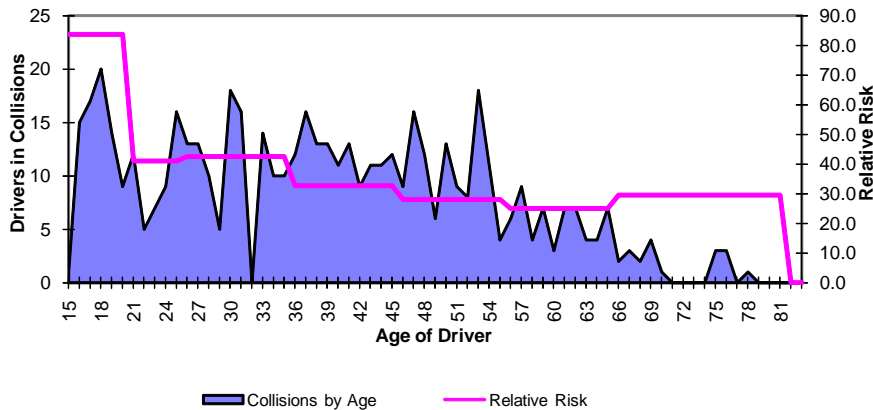
	NWT Highways	In Communities	Rural	Total	%
Non-Moving Objects					
Hit Parked Trailer	0	0	0	0	0.0
Hit Non-Fixed Object	0	0	0	0	0.0
Hit Building	0	7	0	7	1.1
Hit Ditch	1	2	0	3	0.5
Hit Embankment, Dirt Pile, Rock	4	2	1	7	1.1
Hit Culvert End, Drainage Structure	0	0	0	0	0.0
Hit Tree, Bush, Hedge	2	1	0	3	0.5
Hit Utility Pole, Lamp Pole	1	21	0	22	3.4
Hit Curb	1	4	0	5	0.8
Hit Post	0	3	0	3	0.5
Hit Traffic Barrier	3	9	0	12	1.9
Hit Fixed Object Part of Road Structure	0	0	0	0	0.0
Hit Fixed Object NOT Part of Road Structure	0	1	0	1	0.2
Hit Other Type Fixed Object	0	2	0	2	0.3
Sub Total Fixed Objects	12	52	1	65	10.2
Moveable Objects					
Another Road Vehicle	26	405	2	433	67.9
Animal	9	0	0	9	1.4
Pedestrian	3	22	0	25	3.9
Other Moveable Object	0	1	1	2	0.3
Sub Total Moveable Objects	38	428	3	469	73.5
Non-Collision Events					
Ran Off Road	19	8	0	27	4.2
Rollover	54	14	0	68	10.7
Jack Knife or Trailer Swing	0	0	0	0	0.0
Fire or Explosion	0	0	0	0	0.0
Load Spill	0	0	0	0	0.0
Load Shift	0	0	0	0	0.0
Submersion	0	0	0	0	0.0
Other Non-Collision Event	0	0	0	0	0.0
Sub Total Non-Collision Events	73	22	0	95	14.9
Unknown Event	3	5	1	9	1.4
Grand Total	126	507	5	638	100.0

Licensed Drivers and Drivers in Collisions by Driver Age

Figure 5.1

	Under 16	16 to 19	20 to 24	25 to 34	35 to 44	45 to 54	55 to 64	65 and Over	Not Stated	Total
Licensed Drivers	83	1,244	2,240	6,744	6,404	3,788	1,319	475	0	22,297
Drivers in Collisions	14	97	92	287	209	106	33	14	91	943

Drivers in Collisions and Relative Risk by Driver Age



Collision Rates (Collisions Per 1,000 Licensed Drivers) by Severity and Driver Age

Figure 5.2

	15 to 19	20 to 24	25 to 34	35 to 44	45 to 54	55 to 64	65 and Over	Average Rate
Property Damage	58.8	30.4	32.3	25.1	22.4	18.2	21.1	32.6
Personal Injury & Fatal	24.9	10.7	10.2	7.5	5.5	6.8	8.4	9.7
Total	83.6	41.1	42.6	32.6	28.0	25.0	29.5	42.3
Relative Risk*	2.0	1.0	1.0	0.8	0.7	0.6	0.7	1.0

* Relative Risk = (% of drivers in collisions in age group)/(% of total licence holders in age group)

The age of drivers involved in traffic collisions can form the basis of various analysis and countermeasure programs. The reason for this interest is the over-involvement of young drivers in collisions and the disproportionately large number of charges laid as a result of collisions.

Figure 5.1 shows that the relative risk of drivers between the ages of 15 and 19 are 2 times more likely to be involved in a collision than the average driving population. On average, 8% of 15 to 19 year olds were involved in collisions, compared to 3% of 35 to 44 year olds.

Other factors such as exposure, risk, experience, alcohol, and vehicle type must be known to fully understand the relationship of driver age and collision involvement. Studies indicate that the risk of having a collision is a factor of driving experience, not just driver age.

Figure 5.3

*Relative Risk = (% of Total Collisions In Class)/(% of Total Licence Holders In Class)

Figure 5.4

Driver Condition														Not	
	< 16	16	17	18	19	20	21-24	25-34	35-44	45-54	55-64	65+	Stated	Total	%
Apparently Normal	11	18	30	19	18	11	59	238	191	96	29	14	18	752	79.7
Fatigued, Fell Asleep	0	0	0	0	0	0	0	1	1	0	0	0	0	2	0.2
Inexperience	0	0	0	0	0	0	0	0	0	0	0	0	0	0	0.0
Under Influence - Alcohol	1	0	1	2	1	2	12	30	10	2	2	0	0	63	6.7
Under Influence - Drugs	0	0	0	0	0	0	0	1	0	0	0	0	0	1	0.1
Sudden Illness, Lost Consciousness	0	0	0	0	0	1	0	0	0	0	0	0	0	1	0.1
Other Condition	1	2	0	1	0	0	1	1	0	0	0	0	0	6	0.6
Unknown	1	2	2	0	1	1	5	16	7	8	2	0	73	118	12.5
Total	14	22	33	22	20	15	77	287	209	106	33	14	91	943	
%	15	2.3	3.5	2.3	2.1	1.6	8.2	30.4	22.2	11.2	3.5	1.5	9.7	100.0	

Number of Drivers Involved in Collisions by Driver Action and Age

Figure 5.5

Driver Action	<16	16	17	18	19	20	21-24	25-34	35-44	45-54	55-64	65+	Not Stated	Total	%
Driving Properly	2	3	10	5	3	4	22	101	83	34	12	5	9	293	31.1
Following Too Closely	0	1	4	1	1	0	4	20	16	1	0	0	0	48	5.1
<u>Distracted, Inattentive</u>	0	0	0	0	0	0	0	0	0	0	0	0	0	0	0.0
Driving Too Fast	2	5	3	2	4	1	6	17	8	3	1	0	3	55	5.8
Improper Turning or Passing	0	0	1	1	1	0	4	8	3	2	1	0	1	22	2.3
<u>Failing to Yield Right of Way</u>	5	1	2	1	3	2	7	29	16	9	7	1	3	86	9.1
Disobeying Traffic Control/Officer	0	0	0	0	0	0	2	4	0	1	1	0	0	8	0.8
Driving on Wrong Side of Road	0	0	0	0	0	1	0	1	1	2	0	0	0	5	0.5
<u>Driving in Wrong Direction</u>	0	0	0	0	0	0	0	0	0	0	0	0	0	0	0.0
Backing Unsafely	1	2	4	2	3	0	6	29	25	13	5	6	8	104	11.0
Lost Control	2	7	5	8	3	5	21	59	41	31	3	1	4	190	20.1
Other Driver Action	2	1	2	2	1	2	3	11	13	6	0	0	2	45	4.8
Unknown	0	2	2	0	1	0	2	8	3	4	3	1	61	87	9.2
Total	14	22	33	22	20	15	77	287	209	106	33	14	91	943	
%	1.5	2.3	3.5	2.3	2.1	1.6	8.2	30.4	22.2	11.2	3.5	1.5	9.7		100.0

Number of Vehicles in Collisions by Vehicle Type and Severity

Figure 6.1

Vehicle Type	Property Damage	Personal Injury	Fatal	Total	%
Passenger Car	315	62	3	380	34.8
Passenger Van	89	13	1	103	9.4
Light Utility Vehicle	0	0	0	0	0.0
Pickup Truck	370	97	5	472	43.2
Panel/Cargo Van	0	0	0	0	0.0
Other Truck/Van <= 4536 kg	0	0	0	0	0.0
Unit Truck > 4536 kg	11	3	0	14	1.3
Road Tractor	17	4	0	21	1.9
School Bus	1	1	0	2	0.2
Small School Bus	0	0	0	0	0.0
Urban Transit Bus	1	1	0	2	0.2
Intercity Bus	1	0	0	1	0.1
Bus - Unspecified	0	0	0	0	0.0
Motorcycle	1	4	0	5	0.5
Limited Speed Motorcycle	0	0	0	0	0.0
Off Road Vehicles (ATV)	0	2	0	2	0.2
Bicycle	1	5	0	6	0.5
Motor Home	1	0	0	1	0.1
Farm Equipment	0	0	0	0	0.0
Construction Equipment	5	0	0	5	0.5
Fire Engine	0	0	0	0	0.0
Snowmobile	3	14	2	19	1.7
Streetcar	0	0	0	0	0.0
Other	0	1	0	1	0.1
Unknown	57	2	0	59	5.4
Total	873	209	11	1093	100.0

Number of Vehicles in Collisions by Vehicle Condition and Severity

Figure 6.2

Vehicle Condition	Property Damage	Personal Injury	Fatal	Total	%
No Apparent Defect	739	183	10	932	85.3
Defective Brakes	0	2	0	2	0.2
Defective Steering	2	1	0	3	0.3
Defective Lighting	0	3	0	3	0.3
Tire Blown Out	4	4	0	8	0.7
Unsecured Load, Spilled Load	0	0	0	0	0.0
Oversized Load, Overload	0	0	0	0	0.0
Visibility Obstructed	12	1	0	13	1.2
Other Defective Vehicular Parts	23	7	0	30	2.7
Other Vehicular Factor	0	0	0	0	0.0
Unknown	93	8	1	102	9.3
Total	873	209	11	1093	100.0

Number of Vehicles in Collisions by Vehicle Manoeuvre and Severity

Figure 6.3

Vehicle Manoeuvre	Property Damage	Personal Injury	Fatal	Total	%
Going Straight Ahead	322	148	9	479	43.8
Turning Left	70	17	0	87	8.0
Turning Right	47	8	0	55	5.0
Making U-Turn	7	2	0	9	0.8
Changing Lanes	4	1	0	5	0.5
Merging	4	0	0	4	0.4
Reversing	102	3	1	106	9.7
Overtaking	3	0	0	3	0.3
Negotiating Curve	0	0	0	0	0.0
Slowing or Stopped in Traffic	69	18	0	87	8.0
Starting in Traffic	7	0	0	7	0.6
Leaving Roadside	7	2	0	9	0.8
Stopped/Parked Legally	152	4	0	156	14.3
Stopped/Parked Illegally	5	2	1	8	0.7
Swerving to Avoid Collision	6	1	0	7	0.6
Run-away or Roll-away Vehicle	4	0	0	4	0.4
Unspecified Manoeuvre	0	0	0	0	0.0
Other	4	1	0	5	0.5
Unknown	60	2	0	62	5.7
Total	873	209	11	1093	100.0

Number of Vehicles in Collisions by Vehicle Year and Severity

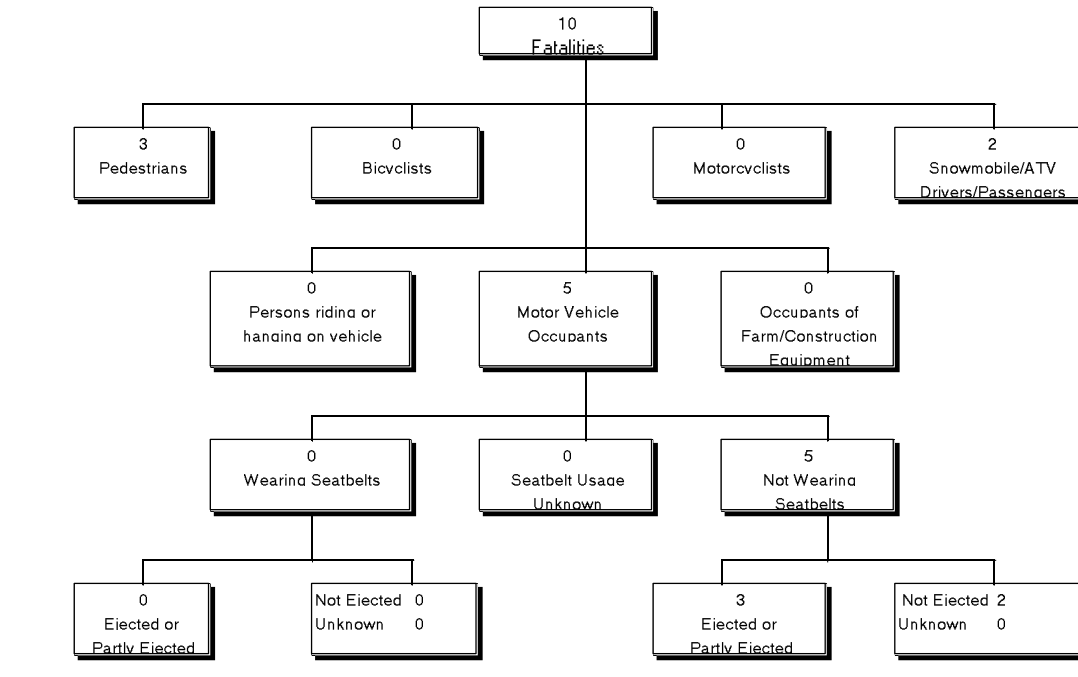
Figure 6.4

Model Year	Property Damage	Personal Injury	Fatal	Total	%
1997	7	1	0	8	0.7
1996	48	13	0	61	5.6
1995	90	16	2	108	9.9
1994	78	21	0	99	9.1
1993	62	11	1	74	6.8
1992	67	8	0	75	6.9
1991	68	11	0	79	7.2
1990	59	14	2	75	6.9
1989	64	20	1	85	7.8
1988	53	15	0	68	6.2
1987	25	12	1	38	3.5
1986	43	7	1	51	4.7
1985 & Older	134	43	2	179	16.4
Unspecified	75	17	1	93	8.5
Total	873	209	11	1093	100.0

Victims and Occupant Restraints – Section 7

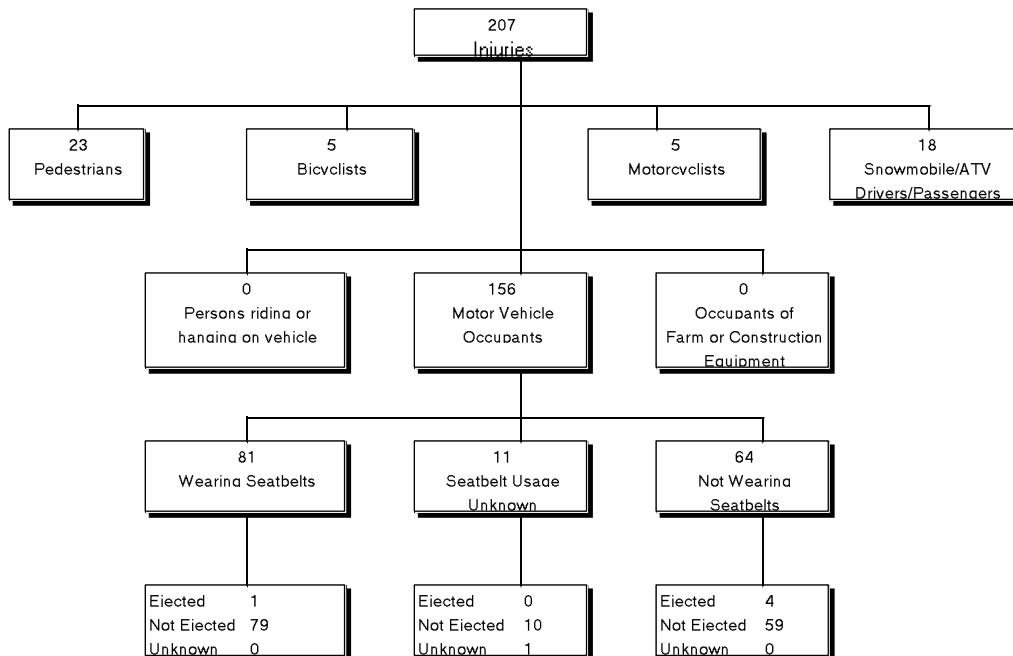
Fatalities Classification
(January 1 to December 31, 1996)

Figure 7.1



Injuries Classification
(January 1 to December 31, 1996)

Figure 7.2



Victims and Occupant Restraints – Section 7

Persons Injured by Road User Class and Age Group

Figure 7.3

Road User Class	0 to 4	5 to 14	15 to 19	20 to 24	25 to 34	35 to 44	45 to 54	55 to 64	65 & older	Not Stated	Total	%
Motor Vehicle Driver	1	1	13	12	25	22	7	3	1	2	87	42.0
Motor Vehicle Passenger	2	9	13	17	9	8	2	1	1	7	69	33.3
<u>Pedestrian</u>	0	9	0	2	4	1	1	1	3	2	23	11.1
Bicyclist	0	4	0	0	0	0	1	0	0	0	5	2.4
Motorcyclist (includes <u>passengers</u>)	0	0	0	1	2	1	1	0	0	0	5	2.4
ATV Operators & Passengers	0	0	2	0	1	0	0	0	0	0	3	1.4
Snowmobile Operators & Passengers	0	3	1	1	4	0	1	1	0	4	15	7.2
Farm/Construction Equipment	0	0	0	0	0	0	0	0	0	0	0	0.0
Other	0	0	0	0	0	0	0	0	0	0	0	0.0
<u>Unspecified</u>	0	0	0	0	0	0	0	0	0	0	0	0.0
Total	3	26	29	33	45	32	13	6	5	15	207	100.0

Persons Killed by Road User Class and Age Group

Figure 7.4

Road User Class	0 to 4	5 to 14	15 to 19	20 to 24	25 to 34	35 to 44	45 to 54	55 to 64	65 & older	Not Stated	Total	%
Motor Vehicle Driver	0	0	0	1	0	2	0	0	0	0	3	30.0
Motor Vehicle Passenger	0	0	0	1	1	0	0	0	0	0	2	20.0
<u>Pedestrian</u>	0	0	0	0	1	1	0	0	1	0	3	30.0
Bicyclist	0	0	0	0	0	0	0	0	0	0	0	0.0
Motorcyclist (includes <u>passengers</u>)	0	0	0	0	0	0	0	0	0	0	0	0.0
ATV Operators & Passengers	0	0	0	0	0	0	0	0	0	0	0	0.0
Snowmobile Operators & Passengers	0	0	0	0	1	1	0	0	0	0	2	20.0
Farm/Construction Equipment	0	0	0	0	0	0	0	0	0	0	0	0.0
Other	0	0	0	0	0	0	0	0	0	0	0	0.0
<u>Unspecified</u>	0	0	0	0	0	0	0	0	0	0	0	0.0
Total	0	0	0	2	3	4	0	0	1	0	10	100.0

Persons Injured or Killed by Road User Class and Gender

Figure 7.5

Road User Class	Persons Injured				Person Killed			
	Male	Female	Unknown	Total	Male	Female	Unknown	Total
Motor Vehicle Driver	55	31	1	87	3	0	0	3
Motor Vehicle Passenger	40	28	1	69	2	0	0	2
<u>Pedestrian</u>	12	11	0	23	2	1	0	3
Bicyclist	3	2	0	5	0	0	0	0
Motorcyclist (includes <u>passengers</u>)	3	2	0	5	0	0	0	0
ATV Operators & Passengers	2	1	0	3	0	0	0	0
Snowmobile Operators & Passengers	11	4	0	15	1	1	0	2
Farm/Construction Equipment	0	0	0	0	0	0	0	0
Other	0	0	0	0	0	0	0	0
<u>Unspecified</u>	0	0	0	0	0	0	0	0
Total	126	79	2	207	8	2	0	10

Victims and Occupant Restraints – Section 7

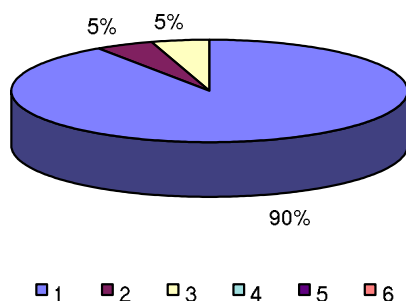
Motor Vehicle* Occupants by Injury Severity and Restraint Use

Figure 7.6

Injury Severity	Not Restrained	Lap Belt Only	Lap & Torso Belt	Child Restraint Device	Restraint Use Unknown	Total	%
Not Injured	219	58	716	0	309	1302	89.0
Minimal Injuries	27	3	37	0	5	72	4.9
Minor Injuries	29	2	39	0	5	75	5.1
Major (Hospital Admission)	8	0	0	0	1	9	0.6
Fatal	5	0	0	0	0	5	0.3
Injured - Extent Unknown	0	0	0	0	0	0	0.0
Total	288	63	792	0	320	1463	100.0

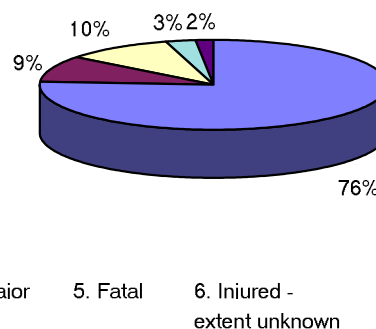
* Excludes occupants of motorcycles, mopeds, snowmobiles, all-terrain vehicles, and farm/construction equipment

Restraints Used



Restraints Not Used

Figure 7.7



Note: The totals used to calculate the percentages in Figures 7.2 and 7.3 do not include occupants where seat belt use was as "unknown".

Victims and Occupant Restraints – Section 7

Motor Vehicle* Occupants by Injury Severity & Age Group

Figure 7.8

Restraints Used

	0	5	15	20	25	35	45	55	65	Not	
Injury Severity	to 4	to 14	to 19	to 24	to 34	to 44	to 54	5 to 64	& older	Stated	Total
Not Injured	17	26	98	69	216	149	89	24	13	73	774
Minimal Injuries	0	2	10	8	7	7	4	0	1	1	40
Minor Injuries	2	1	4	2	13	13	2	1	1	2	41
Major (Hospital Admission)	0	0	0	0	0	0	0	0	0	0	0
Fatal	0	0	0	0	0	0	0	0	0	0	0
Injured - Extent Unknown	0	0	0	0	0	0	0	0	0	0	0
Total	19	29	112	79	236	169	95	25	15	76	855

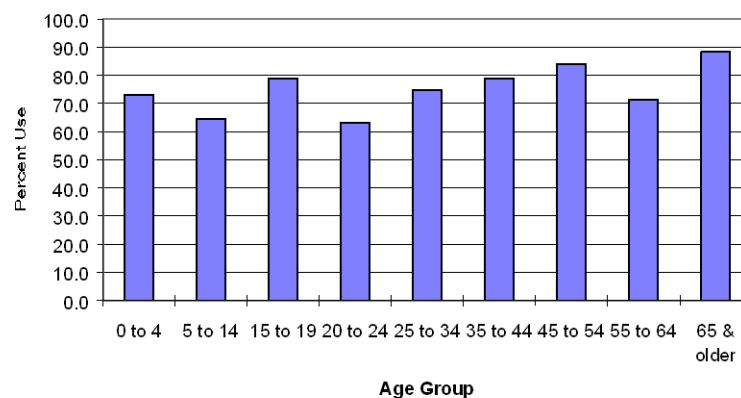
Restraints Not Used

	0	5	15	20	25	35	45	55	65	Not	
Injury Severity	to 4	to 14	to 19	to 24	to 34	to 44	to 54	5 to 64	& older	Stated	Total
Not Injured	6	9	18	28	66	36	15	7	2	32	219
Minimal Injuries	0	1	5	7	5	4	1	2	0	2	27
Minor Injuries	1	5	4	9	4	3	2	0	0	1	29
Major (Hospital Admission)	0	1	3	0	3	0	0	1	0	0	8
Fatal	0	0	0	2	1	2	0	0	0	0	5
Injured - Extent Unknown	0	0	0	0	0	0	0	0	0	0	0
Total	7	16	30	46	79	45	18	10	2	35	288

* Excludes occupants of motorcycles, mopeds, snowmobiles, all-terrain vehicles, and farm/construction equipment

Victim Restraint Use Rate by Victim Age

Figure 7.9



Pedestrians – Section 8

Pedestrians Injured or Killed by Age Group

Figure 8.1

	Age Group										Not Stated	Total %	
	0 to 4	5 to 14	15 to 19	20 to 24	25 to 34	35 to 44	45 to 54	55 to 64	65 & older				
Injured	0	9	0	2	4	1	1	1	3	2	23	88.5	
Killed	0	0	0	0	1	1	0	0	1	0	3	11.5	
Total	0	9	0	2	5	2	1	1	4	2	26		
%	0.0	34.6	0.0	7.7	19.2	7.7	3.8	3.8	15.4	7.7	100.0	100.0	

Pedestrians Injured or Killed by Pedestrian Action and Age Group

Figure 8.2

Pedestrian Action	Age Group										Not Stated	Total	%
	0 to 4	5 to 14	15 to 19	20 to 24	25 to 34	35 to 44	45 to 54	55 to 64	65 & older				
Crossing Intersection With Traffic Control. With Right-of-Way	0	0	0	0	0	0	0	0	0	0	0	0	0.0
Crossing Intersection With Traffic Control. Without Right-of-Way	0	2	0	0	1	0	0	0	0	0	0	3	11.5
Crossing Intersection - No Traffic Control	0	0	0	0	0	0	0	0	0	0	0	0	0.0
Crossing Roadway at Crosswalk	0	1	0	2	0	0	0	0	1	0	0	4	15.4
Crossing Roadway Not at Intersection	0	0	0	0	1	0	1	0	0	0	0	2	7.7
Walking Along Roadway Against Traffic	0	1	0	0	0	2	0	0	0	0	0	3	11.5
Walking Along Roadway With Traffic	0	1	0	0	0	0	0	1	0	0	0	2	7.7
On Sidewalk, Median, Safety Zone	0	0	0	0	0	0	0	0	0	0	0	0	0.0
Walking on Travelled Part of Roadway Against Traffic	0	0	0	0	0	0	0	0	0	0	0	0	0.0
Walking on Travelled Part of Roadway With Traffic	0	0	0	0	0	0	0	0	0	0	0	0	0.0
Coming from Behind Parked Vehicle/Object on Roadside	0	0	0	0	0	0	0	0	0	0	0	0	0.0
Coming from Behind Moving Vehicle	0	0	0	0	0	0	0	0	3	0	0	3	11.5
Running into Roadway	0	3	0	0	1	0	0	0	0	1	5	19.2	
Getting On/Off School Bus	0	0	0	0	0	0	0	0	0	0	0	0	0.0
Getting On/Off Other Vehicles	0	0	0	0	1	0	0	0	0	0	0	1	3.8
Pushing Vehicle on Road	0	0	0	0	0	0	0	0	0	0	0	0	0.0
Working on Vehicle on Side of Road	0	0	0	0	0	0	0	0	0	0	0	0	0.0
Playing on Roadway	0	1	0	0	0	0	0	0	0	0	0	1	3.8
Working on Roadway	0	0	0	0	0	0	0	0	0	0	0	0	0.0
Living on Road	0	0	0	0	0	0	0	0	0	0	0	0	0.0
Other	0	0	0	0	0	0	0	0	0	0	0	0	0.0
Unknown	0	0	0	0	1	0	0	0	0	1	2	7.7	
Total	0	9	0	2	5	2	1	1	4	2	26	100.0	

Pedestrians Injured or Killed By Place of Occurrence and Injury Severity

Figure 8.3

Place of Occurrence	Killed	Injured	Total	%
Urban	2	23	25	96.2
Rural	1	0	1	3.8
Unspecified	0	0	0	0.0
Total	3	23	26	100.0

Pedestrians Injured or Killed by Accident Site

Figure 8.4

Accident Site	Killed	Injured	Total	%
Non-Intersection	2	10	12	46.2
At Intersection of At Least Two Roadways	0	7	7	26.9
Intersection With Parking Lot/Driveway/Alley	1	2	3	11.5
Railroad Level Crossing	0	0	0	0.0
Bridge/Overpass/Viaduct	0	2	2	7.7
Tunnel or Underpass	0	0	0	0.0
Passing Lane/Climbing Lane	0	0	0	0.0
Other	0	2	2	7.7
Unspecified	0	0	0	0.0
Total	3	23	26	100.0

Pedestrians Injured or Killed by Pedestrian Condition

Figure 8.5

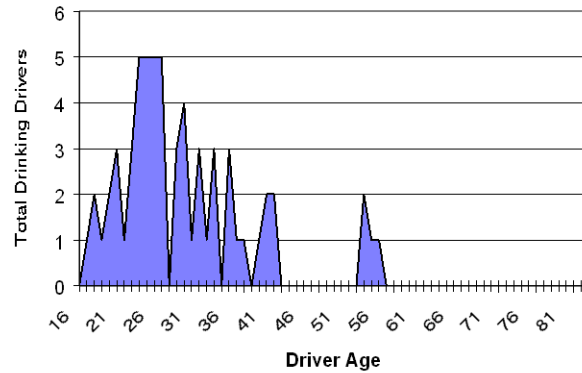
Pedestrian Condition	Killed	Injured	Total	%
Apparently Normal	1	13	14	53.8
Fatigued, Fell Asleep	0	0	0	0.0
Inexperience	0	0	0	0.0
Under Influence - Alcohol	2	5	7	26.9
Under Influence - Drugs	0	0	0	0.0
Sudden Illness, Lost Consciousness	0	0	0	0.0
Other Condition	0	0	0	0.0
Unknown	0	5	5	19.2
Total	3	23	26	100.0

Drinking Drivers in Collisions by Driver Age and Gender

Figure 9.1

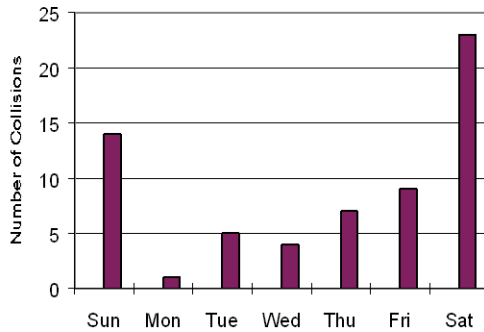
Driver Age	Male	Female	Not Stated	Total Drinking Drivers
Under 16	1	0	0	1
16	0	0	0	0
17	1	0	0	1
18	1	1	0	2
19	1	0	0	1
20	1	1	0	2
21 to 24	8	4	0	12
25 to 34	26	4	0	30
35 to 44	9	1	0	10
45 to 54	2	0	0	2
55 to 64	2	0	0	2
65 & Older	0	0	0	0
Not Stated	0	0	0	0
Total	52	11	0	63

Drinking Drivers by Driver Age



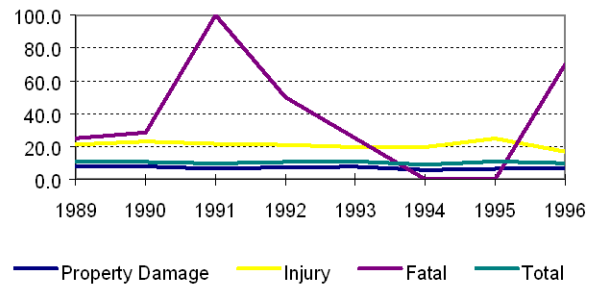
Collisions Involving Alcohol by Day of Week

Figure 9.2



Percentage of Collisions Involving Alcohol by Year and Severity

Figure 9.3



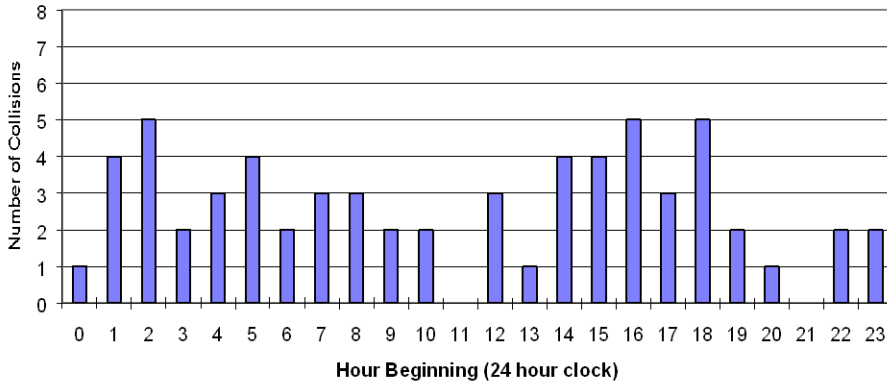
Number of Collisions and Victims Involving Alcohol

Figure 9.4

Number of Collisions						Number of Victims			
	Property Damage	Personal Injury	Fatal	Total	% of Total Collisions	Injured	Killed	Total	% of Total Victims
Year									
1989	56	38	2	96	10.9	63	2	65	24.0
1990	53	32	2	87	10.6	45	2	47	22.6
1991	46	37	3	86	9.7	75	3	78	31.3
1992	50	38	3	91	10.5	59	3	62	23.3
1993	38	35	1	74	10.9	67	1	68	23.7
1994	32	34	0	66	8.9	51	0	51	20.9
1995	33	41	0	74	10.9	62	0	62	27.2
1996	32	24	7	63	9.9	43	7	50	23.0
Average	43	35	2	80	10.3	58	2	60	24.5

Number of Alcohol Related Collisions by Time of Day

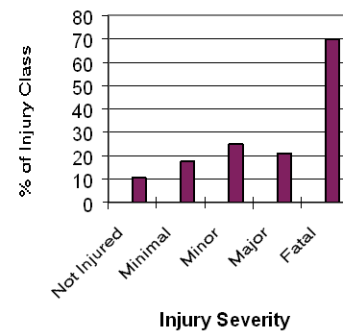
Figure 9.5



Injury Severity by Alcohol Involvement

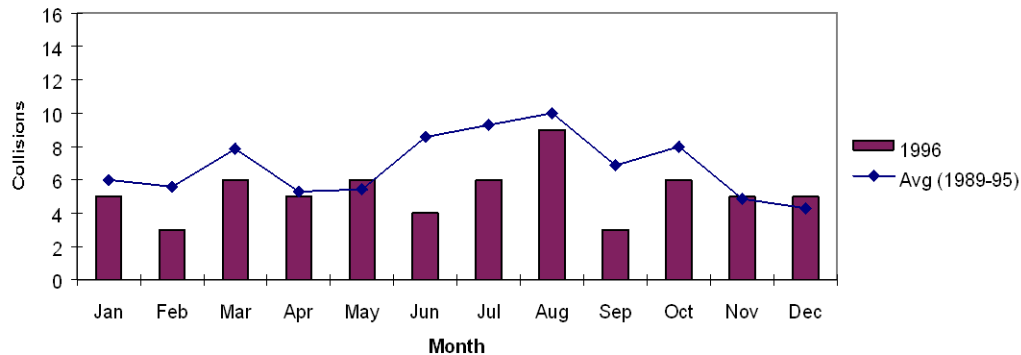
Figure 9.6

Injury Severity	Alcohol Involvement		Totals	% with Alcohol
	Yes	No		
Not Injured	139	1,183	1322	10.5
Minimal Injuries	16	75	91	17.6
Minor	24	72	96	25.0
Major	4	15	19	21.1
Fatal	7	3	10	70.0
Injured - Extent Unknown	0	1	1	0.0
Total	190	1349	1539	12.3



Alcohol-Involved Collisions by Month

Figure 9.7



Off-Road Vehicle Collisions by Month and Severity

Figure 10.1

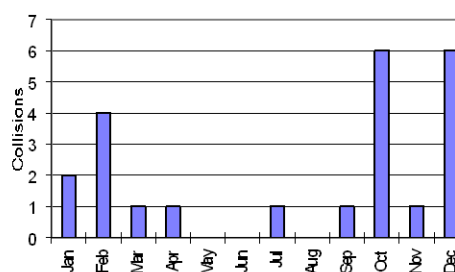
Month	Number of Collisions				Number of Victims	
	Property Damage	Personal Injury	Fatal	Total	Injured	Killed
January	1	1	0	2	1	0
February	0	4	0	4	4	0
March	0	0	1	1	0	1
April	0	1	0	1	3	0
May	0	0	0	0	0	0
June	0	0	0	0	0	0
July	0	1	0	1	2	0
August	0	0	0	0	0	0
September	1	0	0	1	0	0
October	5	1	0	6	1	0
November	1	0	0	1	0	0
December	5	1	0	6	1	0
Total	13	9	1	23	12	1

Off-Road Vehicle Collisions by Vehicle Type

Figure 10.2

	Snowmobile	ATV	Total
Total Victims	17	3	20
Killed	2	0	2
Injured	15	3	18
Total Vehicles Involved	19	2	21
Fatal	2	0	2
Injury	14	2	16
Property Damage	3	0	3

Off-Road Vehicle Collisions by Month



Off-Road Vehicle Drivers in Collisions by Driver Age and Gender

Figure 10.3

Age Group	Snowmobile			ATV			Total	%
	Male	Female	Unknown	Male	Female	Unknown		
0 to 4	0	0	0	0	0	0	0	0.0
5 to 14	3	0	0	0	0	0	3	15.0
15 to 19	2	0	0	1	0	0	3	15.0
20 to 24	1	1	0	0	0	0	2	10.0
25 to 34	5	0	0	1	0	0	6	30.0
35 to 44	2	0	0	0	0	0	2	10.0
45 to 54	2	0	0	0	0	0	2	10.0
55 to 64	1	0	0	0	0	0	1	5.0
65 & Over	0	0	0	0	0	0	0	0.0
Unknown	0	0	1	0	0	0	1	5.0
Total	16	1	1	2	0	0	20	100.0

Off-Road Vehicle Drivers in Collisions by Driver Condition and Severity

Figure 10.4

Driver Condition	Property	Personal	Fatal	Total	%
	Damage	Injury			
Apparently Normal	2	10	0	12	60.0
Fatigue/Fell Asleep	0	0	0	0	0.0
Inexperience	0	0	0	0	0.0
Under Influence - Alcohol	0	4	2	6	30.0
Under Influence - Drugs	0	0	0	0	0.0
Sudden Illness, Lost Consciousness	0	0	0	0	0.0
Other Condition	0	0	0	0	0.0
Unknown	0	2	0	2	10.0
Total	2	16	2	20	100.0

Off-Road Vehicle Drivers in Collisions by Driver Action and Severity

Figure 10.5

Driver Action	Property Damage	Personal Injury	Fatal	Total	%
Driving Properly	1	0	0	1	5.0
Following Too Closely	0	0	0	0	0.0
Distracted, Inattentive	0	0	0	0	0.0
Driving Too Fast for Conditions	0	2	0	2	10.0
Improper Turning or Passing	0	0	0	0	0.0
Failed to Yield Right-of-Way	0	6	0	6	30.0
Disobeyed Traffic Control or Officer	0	0	0	0	0.0
Driving on Wrong Side of Road	1	0	0	1	5.0
Driving in Wrong Direction	0	0	0	0	0.0
Backing Unsafely	0	0	0	0	0.0
Lost Control	0	4	1	5	25.0
Other	0	3	1	4	20.0
Unknown	0	1	0	1	5.0
Total	2	16	2	20	100.0

Off-Road Vehicle Occupants by Injury Severity and Helmet Use

Figure 10.6

Injury Severity	Helmet Worn	Helmet Not Worn	Unknown	Total	%
Not Injured	3	10	1	14	41.2
Minimal Injuries	1	6	0	7	20.6
Minor Injuries	2	4	1	7	20.6
Major (Hospital Admission)	1	3	0	4	11.8
Fatal	0	2	0	2	5.9
Injured - Extent Unknown	0	0	0	0	0.0
Total	7	25	2	34	100.0

Collisions by Region, RCMP Detachment and Severity

Figure 11.1

A - Inuvik Region

RCMP Detachment	Number of Collisions				Number of Victims	
	Property Damage	Personal Injury	Fatal	Total	Injured	Killed
Aklavik	1	2	0	3	2	0
Deline	8	1	0	9	1	0
Fort Good Hope	4	2	0	6	2	0
Fort McPherson	9	4	2	15	5	2
Holman	0	0	0	0	0	0
Inuvik	49	14	0	63	21	0
Norman Wells	3	3	0	6	4	0
Sachs Harbour	0	0	0	0	0	0
Tuktoyaktuk	3	2	1	6	5	1
Tulita	2	0	0	2	0	0
Sub Total						
Inuvik Region	79	28	3	110	40	3

B - Fort Simpson Region

RCMP Detachment	Number of Collisions				Number of Victims	
	Property Damage	Personal Injury	Fatal	Total	Injured	Killed
Fort Liard	9	3	1	13	6	1
Fort Simpson	18	11	1	30	17	1
Sub Total						
Fort Simpson Region	27	14	2	43	23	2

C - South Slave Region

RCMP Detachment	Number of Collisions				Number of Victims	
	Property Damage	Personal Injury	Fatal	Total	Injured	Killed
Hay River	55	15	2	72	20	2
Fort Providence	9	4	0	13	5	0
Fort Resolution	4	1	1	6	1	1
Fort Smith	17	7	0	24	12	0
Lutsel K'e	0	1	0	1	1	0
Sub Total						
South Slave Region	85	28	3	116	39	3

D - North Slave Region

RCMP Detachment	Number of Collisions				Number of Victims	
	Property Damage	Personal Injury	Fatal	Total	Injured	Killed
Rae/Wha Ti	17	13	2	32	26	2
Yellowknife	278	59	0	337	79	0
Sub Total						
North Slave Region	295	72	2	369	105	2

Total - All Regions	486	142	10	638	207	10
--------------------------------	------------	------------	-----------	------------	------------	-----------

Collision Rates by Region and RCMP Detachment

Figure 11.2

A - Inuvik Region

RCMP Detachment	Number of Collisions	Licensed Drivers [1]	Registered Vehicles [1]	Population (1996 estimate [2])	Collision Rates		
					Collisions/ 100 Licensed Drivers	Collisions/ 100 Registered Vehicles	Collisions/ 100 Population
Aklavik	3	181	87	748	1.66	3.45	0.40
Deline	9	86	58	633	10.47	15.52	1.42
Fort Good Hope	6	166	89	780	3.61	6.74	0.77
Fort McPherson	15	244	244	1,123	6.15	6.15	1.34
Ulukhaktok	0	49	95	447	0.00	0.00	0.00
Inuvik	63	1,825	1,537	3,338	3.45	4.10	1.89
Norman Wells	6	532	646	764	1.13	0.93	0.79
Sachs Harbour	0	39	32	164	0.00	0.00	0.00
Tuktoyaktuk	6	349	215	1,263	1.72	2.79	0.48
Tulita	2	44	55	450	4.55	3.64	0.44
Sub Total							
Inuvik Region	110	3,515	3,058	9,710	3.13	3.60	1.13

B - Fort Simpson Region

RCMP Detachment	Number of Collisions	Licensed Drivers [1]	Registered Vehicles [1]	Population (1996 estimate [2])	Collision Rates		
					Collisions/ 100 Licensed Drivers	Collisions/ 100 Registered Vehicles	Collisions/ 100 Population
Fort Liard	13	140	145	530	9.29	8.97	2.45
Fort Simpson	30	800	859	1,701	3.75	3.49	1.76
Sub Total							
Fort Simpson Region	43	940	1,004	2,231	4.57	4.28	1.93

C - South Slave Region

RCMP Detachment	Number of Collisions	Licensed Drivers [1]	Registered Vehicles [1]	Population (1996 estimate [2])	Collision Rates		
					Collisions/ 100 Licensed Drivers	Collisions/ 100 Registered Vehicles	Collisions/ 100 Population
Hay River	72	2,673	3,552	4,164	2.69	2.03	1.73
Fort Providence	13	227	296	786	5.73	4.39	1.65
Fort Resolution	6	202	205	557	2.97	2.93	1.08
Fort Smith	24	1,523	1,530	2,573	1.58	1.57	0.93
Lutsel K'e	1	60	34	330	1.67	2.94	0.30
Sub Total							
South Slave Region	116	4,685	5,617	8,410	2.48	2.07	1.38

D - North Slave Region

RCMP Detachment	Number of Collisions	Licensed Drivers [1]	Registered Vehicles [1]	Population (1996 estimate [2])	Collision Rates		
					Collisions/ 100 Licensed Drivers	Collisions/ 100 Registered Vehicles	Collisions/ 100 Population
Behchoko/Whati	32	545	539	2,618	5.87	5.94	1.22
Yellowknife	337	12,612	12,060	18,479	2.67	2.79	1.82
Sub Total							
North Slave Region	369	13,157	12,599	21,097	2.80	2.93	1.75

Total - All Regions	638	22,297	22,278	41,800	2.86	2.86	1.53
----------------------------	------------	---------------	---------------	---------------	-------------	-------------	-------------

[1] Number of registered vehicles and licensed drivers are as of December 31, 1996.

[2] 1996 population from NWT Bureau of Statistics July 1 estimate published in 'Quarterly Report', March 1997.

Geographic Distribution – Section 11

Collisions on the NWT Highway System

Figure 11.3

Highway #1 (Mackenzie)	On Km	Collision Date	Collision Severity	Collision Configuration	#Persons Injured	#Persons Killed
	0.0	20-May-1996	Property Damage	Other Single Vehicle Collision	0	0
	25.0	10-Nov-1996	Injury	Collision with Fixed Object	2	0
	70.0	5-May-1996	Property Damage	Single Vehicle Rollover	0	0
	86.0	12-Jan-1996	Injury	Single Vehicle Rollover	1	0
	108.0	5-May-1996	Injury	Single Vehicle Rollover	1	0
	187.5	7-Jan-1996	Property Damage	Sideswipe - Opposite Direction	0	0
	238.0	22-Sep-1996	Injury	Single Vehicle Rollover	1	0
	322.0	19-Feb-1996	Injury	Single Vehicle Rollover	1	0
	341.0	22-Dec-1996	Injury	Other Single Vehicle Collision	1	0
	402.0	19-Feb-1996	Property Damage	Collision with Fixed Object	0	0
	411.8	3-Jan-1996	Property Damage	Single Vehicle Rollover	0	0
	451.0	11-Mar-1996	Property Damage	Single Vehicle Rollover	0	0
	454.0	12-Oct-1996	Injury	Single Vehicle Rollover	3	0
	460.0	19-Apr-1996	Injury	Single Vehicle Rollover	2	0
	463.0	18-May-1996	Injury	Single Vehicle Rollover	1	0
	466.0	28-Aug-1996	Injury	Other Multi-Vehicle Collision	2	0
	471.0	9-Aug-1996	Property Damage	Ran Off Road	0	0
	510.0	29-Jul-1996	Injury	Single Vehicle Rollover	1	0
	528.0	20-Jul-1996	Injury	Single Vehicle Rollover	2	0
	531.0	18-Mar-1996	Injury	Single Vehicle Rollover	1	0
	632.0	17-Oct-1996	Property Damage	Single Vehicle Rollover	0	0
	650.0	6-Oct-1996	Property Damage	Single Vehicle Rollover	0	0
Summary Highway #1	Property Damage Collisions	Personal Injury Collisions	Fatal Collisions	Total Collisions	Persons Injured	Persons Killed
	9	13	0	22	19	0
Highway #2 (Hay River)	On Km	Collision Date	Collision Severity	Collision Configuration	#Persons Injured	#Persons Killed
	30.0	1-May-1996	Property Damage	Sideswipe Same Direction	0	0
	38.8	3-Aug-1996	Injury	Right Angle	1	0
	39.1	10-Nov-1996	Property Damage	Other Multi-Vehicle Collision	0	0
	39.7	5-Mar-1996	Property Damage	Other Multi-Vehicle Collision	0	0
	39.7	9-Mar-1996	Property Damage	Collision with Fixed Object	0	0
	39.7	1-Jul-1996	Injury	Single Vehicle Rollover	1	0
	39.7	11-Nov-1996	Property Damage	Collision with Fixed Object	0	0
	40.0	22-May-1996	Injury	Collision with Pedestrian	1	0
	41.1	30-Apr-1996	Property Damage	Collision with Fixed Object	0	0
Summary Highway #2	Property Damage Collisions	Personal Injury Collisions	Fatal Collisions	Total Collisions	Persons Injured	Persons Killed
	6	3	0	9	3	0

Geographic Distribution – Section 11

Highway #3 (Yellowknife)	On Km	Collision Date	Collision Severity	Collision Configuration	#Persons Injured	#Persons Killed
	18.0	21-Mar-1996	Property Damage	Single Vehicle Rollover	0	0
	23.0	20-Jan-1996	Property Damage	Single Vehicle Rollover	0	0
	27.0	14-Feb-1996	Property Damage	Collision with Fixed Object	0	0
	46.0	13-Jul-1996	Injury	Animal Strike	2	0
	63.0	7-Aug-1996	Property Damage	Animal Strike	0	0
	63.0	21-Aug-1996	Property Damage	Animal Strike	0	0
	64.0	18-Jan-1996	Property Damage	Other Single Vehicle Collision	0	0
	71.0	6-Feb-1996	Property Damage	Animal Strike	0	0
	71.0	26-Mar-1996	Property Damage	Single Vehicle Rollover	0	0
	111.0	23-Oct-1996	Property Damage	Animal Strike	0	0
	138.0	14-Apr-1996	Injury	Single Vehicle Rollover	1	0
	139.0	4-Mar-1996	Property Damage	Collision with Fixed Object	0	0
	176.0	3-Apr-1996	Property Damage	Rear End	0	0
	181.0	1-Mar-1996	Injury	Rear End	3	0
	225.0	13-Oct-1996	Property Damage	Single Vehicle Rollover	0	0
	229.0	24-Nov-1996	Property Damage	Sideswipe - Opposite Direction	0	0
	243.0	1-Jul-1996	Injury	Ran Off Road	2	0
	243.0	5-Aug-1996	Property Damage	Right Angle	0	0
	245.0	21-Feb-1996	Property Damage	Collision with Fixed Object	0	0
	255.0	18-Feb-1996	Property Damage	Ran Off Road	0	0
	257.0	29-Jul-1996	Injury	Single Vehicle Rollover	2	0
	257.0	12-Dec-1996	Property Damage	Ran Off Road	0	0
	260.0	31-Mar-1996	Fatal	Collision with Parked Vehicle	4	1
	269.0	19-Jun-1996	Fatal	Single Vehicle Rollover	2	1
	270.0	20-Oct-1996	Injury	Single Vehicle Rollover	1	0
	285.0	22-Jun-1996	Injury	Ran Off Road	3	0
	296.0	8-Aug-1996	Injury	Single Vehicle Rollover	2	0
	301.0	22-Aug-1996	Injury	Single Vehicle Rollover	1	0
	305.0	19-Jan-1996	Property Damage	Animal Strike	0	0
	308.0	25-Aug-1996	Injury	Single Vehicle Rollover	1	0
	309.0	23-Jul-1996	Injury	Collision with Fixed Object	2	0
	316.0	3-Oct-1996	Injury	Sideswipe - Opposite Direction	1	0
	319.0	21-Jan-1996	Property Damage	Single Vehicle Rollover	0	0
	321.0	25-Mar-1996	Injury	Single Vehicle Rollover	1	0
	335.0	11-Dec-1996	Property Damage	Collision with Fixed Object	0	0
	336.0	2-Nov-1996	Property Damage	Ran Off Road	0	0
	338.5	11-Sep-1996	Property Damage	Other Multi-Vehicle Collision	0	0
	338.8	3-Oct-1996	Property Damage	Right Angle	0	0
	338.8	4-Oct-1996	Property Damage	Collision with Fixed Object	0	0
Summary Highway #3	Property Damage Collisions	Personal Injury Collisions	Fatal Collisions	Total Collisions	Persons Injured	Persons Killed
	24	13	2	39	28	2

Geographic Distribution – Section 11

Highway #4 (Ingraham Trail)	On Km	Collision Date	Collision Severity	Collision Configuration	#Persons Injured	#Persons Killed
	0.0	5-Oct-1996	Injury	Collision with Fixed Object	1	0
	1.0	17-Jan-1996	Injury	Single Vehicle Rollover	2	0
	1.0	7-Sep-1996	Injury	Collision with Pedestrian	1	0
	9.0	15-Sep-1996	Injury	Single Vehicle Rollover	2	0
	12.0	17-Jun-1996	Property Damage	Collision with Fixed Object	0	0
	34.0	1-Jul-1996	Property Damage	Single Vehicle Rollover	0	0
	34.0	18-Oct-1996	Property Damage	Single Vehicle Rollover	0	0
	54.0	27-Dec-1996	Property Damage	Other Multi-Vehicle Collision	0	0
	60.0	10-Mar-1996	Property Damage	Single Vehicle Rollover	0	0

Summary Highway #4	Property Damage Collisions	Personal Injury Collisions	Fatal Collisions	Total Collisions	Persons Injured	Persons Killed
	5	4	0	9	6	0

Highway #5 (Fort Smith Highway)	On Km	Collision Date	Collision Severity	Collision Configuration	#Persons Injured	#Persons Killed
	3.0	19-Feb-1996	Injury	Single Vehicle Rollover	2	0
	78.0	1-Sep-1996	Fatal	Single Vehicle Rollover	0	1
	134.0	18-Sep-1996	Property Damage	Animal Strike	0	0
	166.0	30-Sep-1996	Injury	Animal Strike	1	0
	243.0	14-Jan-1996	Injury	Ran Off Road	1	0
	243.0	18-Jan-1996	Injury	Single Vehicle Rollover	1	0
	260.0	4-Jan-1996	Injury	Single Vehicle Rollover	2	0

Summary Highway #5	Property Damage Collisions	Personal Injury Collisions	Fatal Collisions	Total Collisions	Persons Injured	Persons Killed
	1	5	1	7	7	1

Highway #6 (Fort Resolution Highway)	On Km	Collision Date	Collision Severity	Collision Configuration	#Persons Injured	#Persons Killed
	20.0	2-Dec-1996	Property Damage	Single Vehicle Rollover	0	0
	54.0	17-Oct-1996	Property Damage	Collision with Fixed Object	0	0
	66.0	18-Oct-1996	Property Damage	Collision with Fixed Object	0	0

Summary Highway #6	Property Damage Collisions	Personal Injury Collisions	Fatal Collisions	Total Collisions	Persons Injured	Persons Killed
	3	0	0	3	0	0

Geographic Distribution – Section 11

Highway #7 (Liard Highway)	On Km	Collision Date	Collision Severity	Collision Configuration	#Persons Injured	#Persons Killed
	16.0	19-Mar-1996	Property Damage	Single Vehicle Rollover	0	0
	23.0	2-Sep-1996	Property Damage	Single Vehicle Rollover	0	0
	60.0	2-Feb-1996	Property Damage	Animal Strike	0	0
	111.0	20-Dec-1996	Property Damage	Collision with Fixed Object	0	0
	128.0	28-Jun-1996	Injury	Ran Off Road	1	0

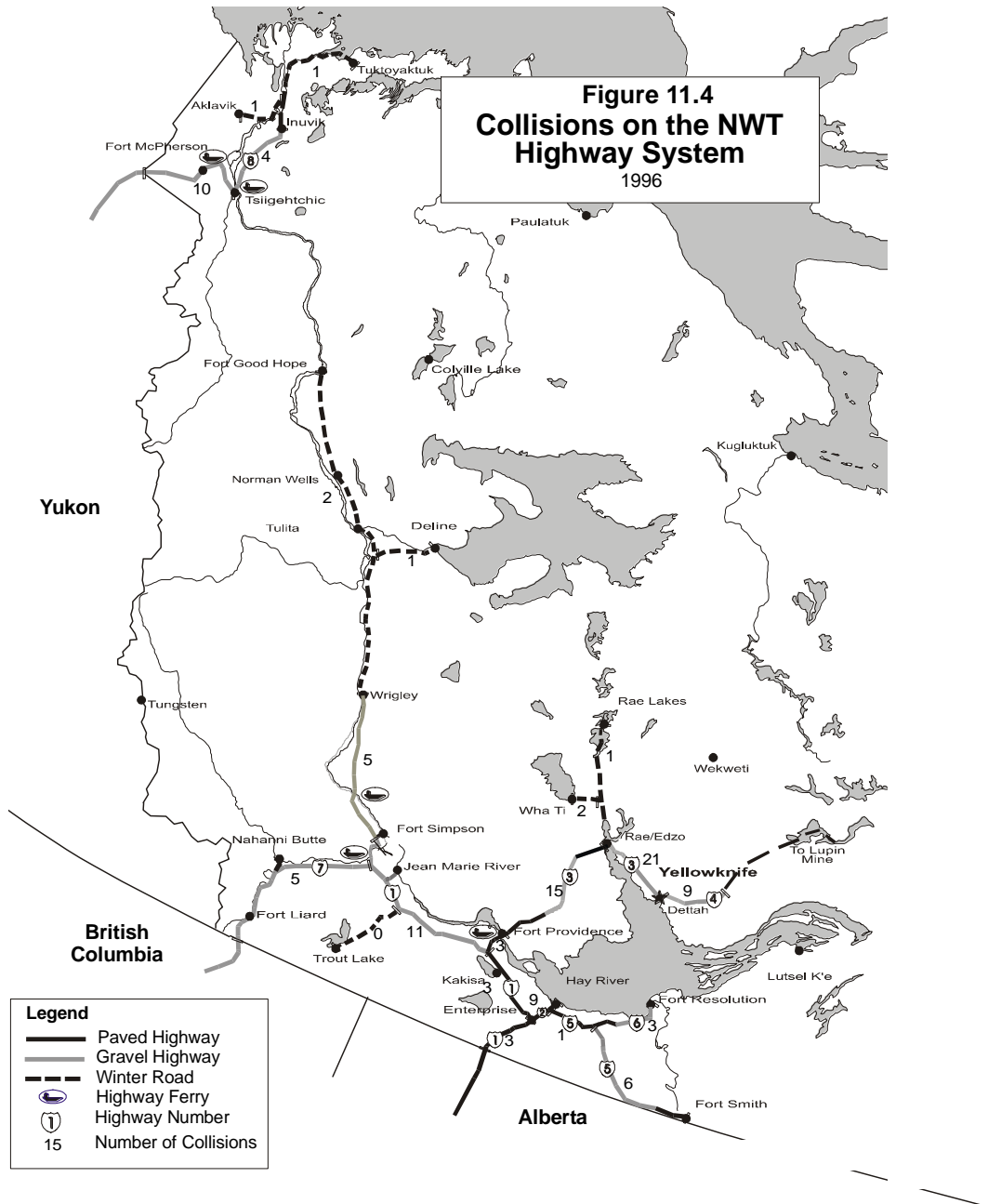
Summary Highway #7	Property Damage Collisions	Personal Injury Collisions	Fatal Collisions	Total Collisions	Persons Injured	Persons Killed
	4	1	0	5	1	0

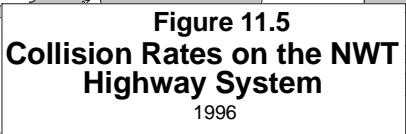
Highway #8 (Dempster Highway)	On Km	Collision Date	Collision Severity	Collision Configuration	#Persons Injured	#Persons Killed
	0.0	7-Sep-1996	Property Damage	Ran Off Road	0	0
	21.0	31-Mar-1996	Injury	Other Single Vehicle Collision	1	0
	32.0	8-Oct-1996	Property Damage	Single Vehicle Rollover	0	0
	35.0	16-Jul-1996	Property Damage	Single Vehicle Rollover	0	0
	65.0	29-Jun-1996	Property Damage	Collision with Fixed Object	0	0
	74.0	19-May-1996	Fatal	Collision with Pedestrian	0	1
	75.0	1-Jul-1996	Property Damage	Ran Off Road	0	0
	77.0	22-Apr-1996	Fatal	Single Vehicle Rollover	1	1
	122.0	6-Dec-1996	Property Damage	Collision with Fixed Object	0	0
	127.0	25-Jul-1996	Injury	Single Vehicle Rollover	1	0
	172.0	18-Jun-1996	Property Damage	Single Vehicle Rollover	0	0
	172.0	15-Jul-1996	Property Damage	Single Vehicle Rollover	0	0
	174.0	23-Aug-1996	Property Damage	Single Vehicle Rollover	0	0
	272.0	3-Dec-1996	Injury	Right Angle	2	0

Summary Highway #8	Property Damage Collisions	Personal Injury Collisions	Fatal Collisions	Total Collisions	Persons Injured	Persons Killed
	9	3	2	14	5	2

Geographic Distribution – Section 11

Access and Winter Roads	Collision Date	Collision Severity	Collision Configuration	#Persons Injured	#Persons Killed	
Aklavik Winter Access Road	25-Jan-1996	Injury	Single Vehicle Rollover	2	0	
Deline Winter Access Road	3-Mar-1996	Property Damage	Collision with Parked Vehicle	0	0	
Fort Liard Access Road	21-Jul-1996	Fatal	Single Vehicle Rollover	3	1	
Hay River Reserve Access Road	10-Jun-1996	Injury	Ran Off Road	2	0	
Inuvik-Tuktoyaktuk Winter Road	24-Jan-1996	Injury	Left Turn Across Path	1	0	
Little Buffalo River Falls Access Road	8-Jul-1996	Property Damage	Other Multi-Vehicle Collision	0	0	
Mackenzie Highway Winter Road	31-Jan-1996	Injury	Single Vehicle Rollover	1	0	
Mackenzie Highway Winter Road	10-Mar-1996	Property Damage	Other Multi-Vehicle Collision	0	0	
Rae Access Road	14-Jul-1996	Injury	Single Vehicle Rollover	1	0	
Rae Access Road	2-Nov-1996	Property Damage	Ran Off Road	0	0	
Rae Lakes Winter Access Road	14-Apr-1996	Property Damage	Collision with Fixed Object	0	0	
Salt River Access Road	24-Oct-1996	Injury	Sideswipe - Opposite Direction	3	0	
Vee Lake Access Road	4-Mar-1996	Injury	Other Multi-Vehicle Collision	2	0	
Vee Lake Access Road	25-Jul-1996	Property Damage	Other Multi-Vehicle Collision	0	0	
Wha Ti Winter Access Road	12-Feb-1996	Property Damage	Sideswipe - Opposite Direction	0	0	
Wha Ti Winter Access Road	9-Oct-1996	Property Damage	Other Single Vehicle Collision	0	0	
Yellowknife Access Road	3-Apr-1996	Property Damage	Other Multi-Vehicle Collision	0	0	
Yellowknife Access Road	27-Jun-1996	Injury	Sideswipe Same Direction	1	0	
Summary Access and Winter Roads	Property Damage Collisions	Personal Injury Collisions	Fatal Collisions	Total Collisions	Persons Injured	Persons Killed
	9	8	1	18	16	1
Summary All NWT Highways	Property Damage Collisions	Personal Injury Collisions	Fatal Collisions	Total Collisions	Persons Injured	Persons Killed
	70	50	6	126	85	6





Appendix A3 – Brief Description of Fatal Collisions

The following is a brief description of the ten fatal traffic collisions that took place in the Northwest Territories in 1996, resulting in ten fatalities.

RCMP Detachment	Date	Description
Fort Resolution	2-Mar	Passenger on snowmobile fell off machine and struck head. Helmet not worn. Operator was impaired.
Rae	30-Mar	Van struck illegally parked pickup truck on Highway #3, 15 km east of Rae Access Road. The driver, who was impaired by alcohol and not wearing a seat belt, was killed.
Fort McPherson	21-Apr	Single vehicle rollover on Highway #8 near Fort McPherson. The driver, who was impaired and not wearing a seat belt, was killed.
Fort McPherson	18-May	Elderly pedestrian struck by pickup truck. Driver was impaired.
Rae	18-Jun	Single vehicle rollover involving passenger car on Highway #3, 24 km east of Rae Access Road. The car was carrying three occupants. The right front passenger, who was not wearing a seat belt, was partially ejected and killed. Condition of driver unknown.
Fort Liard	20-Jul	Single vehicle rollover involving passenger car carrying four occupants on Fort Liard Access Road. The right front passenger, who was not wearing a seat belt, was ejected and killed.
Fort Simpson	31-Aug	Pedestrian struck by passenger car. Both driver and pedestrian had been drinking.
Hay River	31-Aug	Single vehicle rollover on Highway #5 involving pickup truck. The driver, who had been drinking, was ejected and killed.
Hay River	31-Aug	Pedestrian struck by pickup truck. Pedestrian had been drinking.
Tuktoyaktuk	12-Oct	Alcohol impaired operator of snowmobile lost control and was killed. No helmet worn.

