

# **1997 NWT Traffic Collision Facts**

Department of Transportation  
Road Licensing and Safety Division  
May, 2001

## **Acknowledgements**

This report was prepared by the Road Licensing and Safety Division of the Department of Transportation, Government of the Northwest Territories, in cooperation with the Transportation Planning Division.

If you have any comments or questions related to the content of this report, please contact the Road Licensing and Safety Division at telephone (867) 920-3395, or by facsimile at (867) 873-0120.

## 1997 QUICK FACTS REPORT

### 1997 Compared to 1996

	<u>1996</u>	<u>1997</u>	<u>% Change</u>
PROPERTY DAMAGE ONLY COLLISIONS	486	443	-8.8
PERSONAL INJURY COLLISIONS	142	151	6.3
FATAL COLLISIONS	10	6	-40.0
TOTAL REPORTED COLLISIONS	638	600	-6.0
NUMBER OF PERSONS KILLED	10	8	-20.0
NUMBER OF PERSONS INJURED	207	221	6.8
NWT HIGHWAY SYSTEM COLLISIONS	126	142	12.7
RURAL COLLISIONS	5	12	140.0
COLLISIONS IN COMMUNITIES	507	446	-12.0
REGISTERED VEHICLES	22,278	21,956	-1.4
LICENSED DRIVERS	22,297	20,850	-6.5
NWT POPULATION [1]	41,800	41,800	0.0
COLLISIONS PER 100 LICENSED DRIVERS	2.86	2.88	0.6
COLLISIONS PER 100 REGISTERED VEHICLES	2.86	2.73	-4.6
COLLISIONS PER 100 POPULATION	1.53	1.44	-6.0
COLLISIONS INVOLVING ALCOHOL	61	62	1.6

[1] 1996 and 1997 population from NWT Bureau of Statistics July 1 estimate published in 'Quarterly Report', March 1998.

### Introduction

The Traffic Collision Information System (TCIS) is a computer-based system that compiles information on traffic collisions occurring throughout the Northwest Territories. This information is obtained from the motor vehicle collision (MVA) report form that is completed by Royal Canadian Mounted Police detachments in accordance with Section 262 of the Motor Vehicles Act.

TCIS provides valuable information for many traffic collision countermeasure programs. TCIS, the MVA report form, and various collision publications are administered by the GNWT Department of Transportation, Road Licensing and Safety Division. The collection of this valuable data is made possible by the efforts and dedication of the many Royal Canadian Mounted Police officers across the Northwest Territories who complete MVA forms from their collision investigations.

---

### TCIS Definitions

**REPORTABLE MOTOR VEHICLE COLLISION** - an incident involving one or more motor vehicles resulting in death, personal injury or a minimum of \$1,000 in property damage. TCIS only records reportable motor vehicle collisions which occur on or adjacent to roadways intended for use by the general public. The following is a list of words and terms used in reportable collisions:

**INCIDENT** - Any set of events not under human control which includes at least one occurrence of injury or damage. It originates when human control is lost and terminates when control is regained, or in the absence of persons who are able to regain control when all persons and property are at rest.

Excluded are events which are known to be the result of deliberate intent, legal intervention or natural disasters. As an example, if a vehicle catches fire due to mechanical failure and the driver is able to stop the car, this is not a traffic collision because control of the vehicle was never lost.

**VEHICLE** - is any vehicle designed to travel on land that is drawn, propelled or driven by any kind of power, including muscular power, but does not include a device designed to run exclusively on rails.

**MOTOR VEHICLE** - is a vehicle propelled or driven by power other than by wind, gravity or muscular power and includes a trailer, but does not include:

- (a) an aircraft or a marine vehicle,
- (b) a device that runs or is designed to run exclusively on rails,

- (c) a mechanically propelled wheelchair or mobility device.

**PEDESTRIAN** - is a person on foot, in a wheelchair or mobility device and includes a child in a carriage or carried by a person on foot, persons on ice skates, skis, roller blades, skate boards and persons pushing or pulling vehicles. A pedestrian does NOT include persons jumping or falling from a vehicle in motion.

**DAMAGE** - harm to property that reduces the monetary value of that property. It includes harm to animals that have monetary value. It excludes mechanical failure incurred by normal operation such as a tire blow out or broken fan belt.

**ROADWAY** - any highway, secondary road, rural road, street, avenue, parkway, lane, alley or bridge designed and intended for or used by the general public for the passage of vehicles and pedestrians. This includes sidewalks, boulevards and the immediate right-of-way adjacent to and parallel with the roadway. It also includes winter/ice roads, trails, privately maintained roads, driveways and parking lots on which the general public may travel.

**PROPERTY DAMAGE ONLY COLLISION (Property Damage)** - a motor vehicle collision resulting in total damages over the prescribed amount as defined in the Motor Vehicles Act (\$1,000) with no personal injuries or deaths.

**TRAFFIC INJURY COLLISION (Personal Injury)** - a motor vehicle collision resulting in a non-fatal injury to one or more persons. An injury is defined as any bodily harm resulting from the collision.

**TRAFFIC FATALITY COLLISION (Fatal)** - a motor vehicle collision resulting in death within 30 days to one or more involved persons. Death must be the result of injuries incurred from the collision. This excludes death from natural causes such as heart attacks.

		Page
	<b>Quick Facts - Inside Front Cover</b>	
<b><u>Section 1</u></b>	<b><u>Historical Trends</u></b>	<b>1</b>
Figure 1.1	Trends in Licensed Drivers, Registered Vehicles and Collisions	1
1.2	Trends in Collision Rates by Vehicles, Drivers and Population	1
1.3	Trends in Injuries and Fatalities	2
1.4	Trends in Property Damage Collisions	2
1.5	Trends in Personal Injury Collisions	3
1.6	Trends in Fatal Collisions	3
1.7	Trends in All Reported Collisions	4
1.8	Property Damage Collisions by Month and Year	4
1.9	Personal Injury Collisions by Month and Year	5
1.10	Fatal Collisions by Month and Year	5
1.11	Total Collisions by Month and Year	6
<b><u>Section 2</u></b>	<b><u>Time of Occurrence</u></b>	<b>7</b>
Figure 2.1	Personal Injury Collisions by Month of Occurrence	7
2.2	Fatal Collisions by Month of Occurrence	7
2.3	Total Collisions by Month of Occurrence	7
2.4	Collisions and Victims by Month of Occurrence	7
2.5	Total Collisions by Time of Day	7
2.6	Total Collisions by Day of Week	7
2.7	Total Collisions by Time of Day and Day of Week	8
<b><u>Section 3</u></b>	<b><u>Major Contributing Factors</u></b>	<b>9</b>
Figure 3.1	Collision by Severity Where Human Condition Was a Major Contributing Factor	9
3.2	Collisions by Severity Where Human Action Was a Major Contributing Factor	9
3.3	Collisions by Severity Where Vehicle Condition Was a Major Contributing Factor	9
3.4	Collisions by Severity Where Environmental Condition Was a Major Contributing Factor	10
3.5	Collisions by Severity Where Major Contributing Factor Was Unspecified or Unknown	10
3.6	Major Contributing Factors by Collision Severity	10
3.7	Collisions by Road System Where Human Condition Was a Major Contributing Factor	11
3.8	Collisions by Road System Where Human Action Was a Major Contributing Factor	11
3.9	Collisions by Road System Where Vehicle Condition Was a Major Contributing Factor	11
3.10	Collisions by Road System Where Environmental Condition Was a Major Contributing Factor	12
3.11	Collisions by Road System Where Major Contributing Factor Was Unspecified or Unknown	12
3.12	Major Contributing Factors in Collisions - Communities and NWT Highways	12

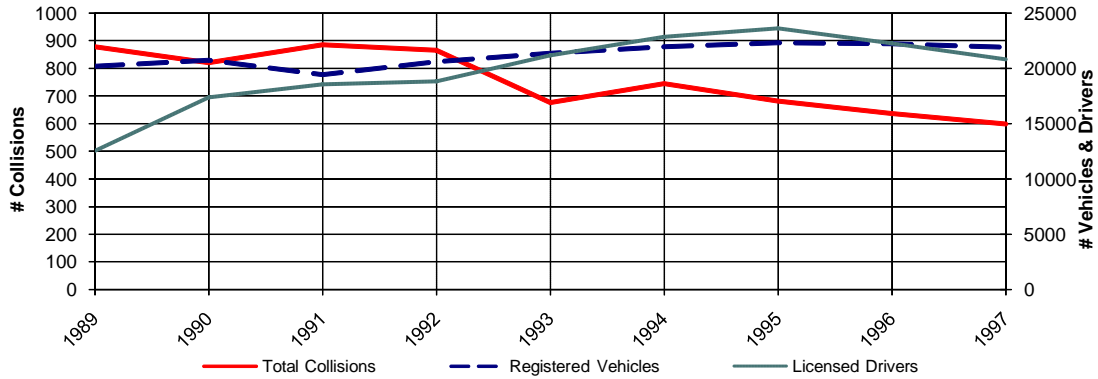
<b><u>Section 4</u></b>	<b><u>Environmental Factors</u></b>	<b>Page</b> <b>13</b>
Figure	4.1 Collisions by Road Surface Type and Severity	13
	4.2 Collisions by Road Surface Environmental Condition and Severity	13
	4.3 Collisions by Road Defect and Severity	14
	4.4 Collisions by Light Condition and Severity	14
	4.5 Collisions by Weather Condition and Severity	15
	4.6 Collisions by Configuration and Severity	16
	4.7 Collisions by Configuration and Road System	17
	4.8 Collisions by Collision Site and Severity	18
	4.9 Collisions by Collision Site and Road System	18
	4.10 Collisions by Roadway Alignment and Severity	18
	4.11 Collisions by Roadway Type and Severity	19
	4.12 Collisions by Sequence of Events and Severity	19
	4.13 Collisions by Sequence of Events and Road System	20
<b><u>Section 5</u></b>	<b><u>Driver Factors</u></b>	<b>21</b>
Figure	5.1 Drivers in Collisions and Relative Risk by Driver Age	21
	5.2 Collision Rates by Severity and Driver Age	21
	5.3 Number of Drivers in Collisions by Licence Class and Age	22
	5.4 Number of Drivers in Collisions by Driver Condition and Age	22
	5.5 Number of Drivers in Collisions by Driver Action and Age	23
<b><u>Section 6</u></b>	<b><u>Vehicle Factors</u></b>	<b>24</b>
Figure	6.1 Number of Vehicles in Collisions by Vehicle Type and Severity	24
	6.2 Number of Vehicles in Collisions by Vehicle Condition and Severity	24
	6.3 Number of Vehicles in Collisions by Vehicle Manoeuvre and Severity	25
	6.4 Number of Vehicles in Collisions by Vehicle Year and Severity	25
<b><u>Section 7</u></b>	<b><u>Victims and Occupant Restraints</u></b>	<b>26</b>
Figure	7.1 Fatalities Classification	26
	7.2 Injuries Classification	26
	7.3 Persons Injured by Road User Class and Age Group	27
	7.4 Persons Killed by Road User Class and Age Group	27
	7.5 Persons Injured or Killed by Road User Class and Gender	27
	7.6 Motor Vehicle Occupants by Injury Severity and Restraint Use	28
	7.7 Restraints Used/Not Used	28
	7.8 Motor Vehicle Occupants by Injury Severity and Age Group	29
	7.9 Victim Restraint Use Rate by Victim Age	29

		Page
<b><u>Section 8</u></b>	<b><u>Pedestrians</u></b>	<b>30</b>
Figure	8.1 Pedestrians Injured or Killed by Age Group	30
	8.2 Pedestrians Injured or Killed by Pedestrian Action and Age Group	30
	8.3 Pedestrians Injured or Killed by Place of Occurrence and Injury Severity	30
	8.4 Pedestrians Injured or Killed by Collision Site	31
	8.5 Pedestrians Injured or Killed by Pedestrian Condition	31
<b><u>Section 9</u></b>	<b><u>Alcohol</u></b>	<b>32</b>
Figure	9.1 Drinking Drivers in Collisions by Driver Age and Gender	32
	9.2 Collisions Involving Alcohol by Day of Week	32
	9.3 Percentage of Collisions Involving Alcohol by Year and Severity	32
	9.4 Number of Collisions and Victims Involving Alcohol	32
	9.5 Number of Alcohol Related Collisions by Time of Day	33
	9.6 Injury Severity by Alcohol Involvement	33
	9.7 Alcohol-Involved Collisions by Month	33
<b><u>Section 10</u></b>	<b><u>Off-Road Vehicles</u></b>	<b>34</b>
Figure	10.1 Off-Road Vehicle Collisions by Month and Severity	34
	10.2 Off-Road Vehicle Collisions by Vehicle Type	34
	10.3 Off-Road Vehicle Drivers in Collisions by Driver Age & Gender	35
	10.4 Off-Road Vehicle Drivers in Collisions by Driver Condition and Severity	35
	10.5 Off-Road Vehicle Drivers in Collisions by Driver Action & Severity	36
	10.6 Off-Road Vehicle Occupants by Injury Severity and Helmet Use	36
<b><u>Section 11</u></b>	<b><u>Geographic Distribution</u></b>	<b>37</b>
Figure	11.1 Collisions by Region, RCMP Detachment and Severity	37
	11.2 Collision Rates by Region and RCMP Detachment	38
	11.3 Collisions on the NWT Highway System	39
	11.4 Collisions on the NWT Highway System - Map	44
	11.5 Collision Rates on the NWT Highway System - Map	45
<b><u>Appendix</u></b>		<b>46</b>
Section	A1 Northwest Territories Motor Vehicle Collision (MVA) Report Form	46
	A2 Northwest Territories MVA Report Form Template	47
	A3 Brief Description of Fatal Collisions	48



**Trends in Licensed Drivers, Registered Vehicles and Collisions**

Figure 1.1

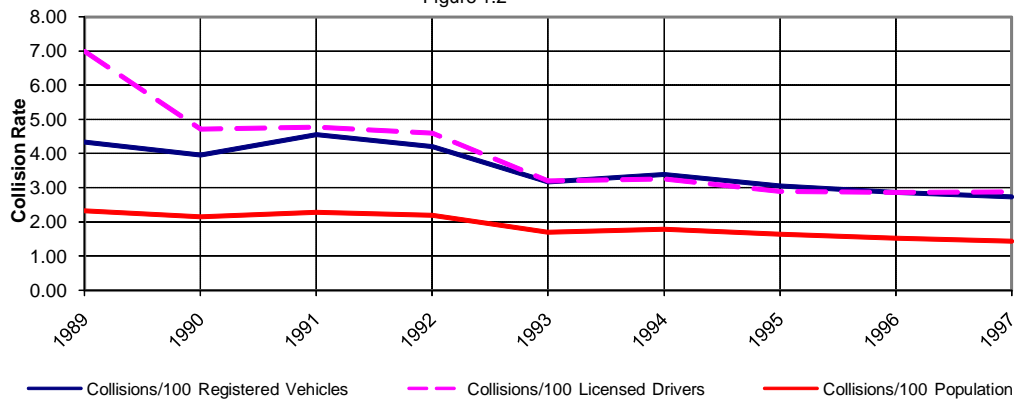


### 3 Year Summary

	1995	1996	1997	% Change
Registered Vehicles	22,350	22,278	21,956	-1.4
Licensed Drivers	23,635	22,297	20,850	-6.5
Total Collisions	682	638	600	-6.0

**Trends in Collision Rates by Vehicles, Drivers and Population**

Figure 1.2

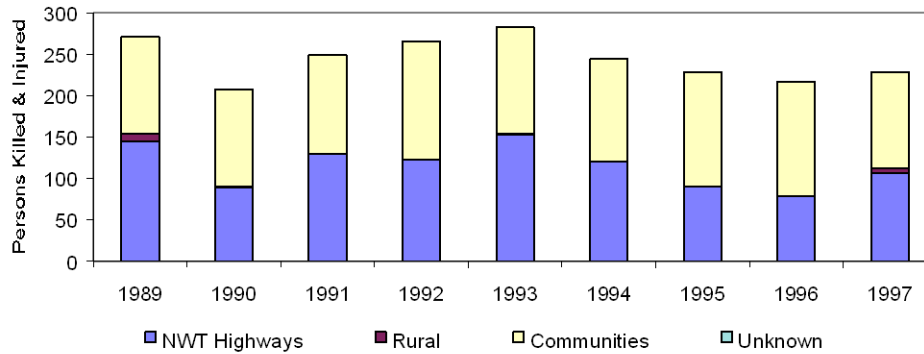


### 3 Year Summary

	1995	1996	1997	% Change
Collisions/100 Registered Vehicles	3.05	2.86	2.73	-4.6
Collisions/100 Licensed Drivers	2.89	2.86	2.88	0.6
Collisions/100 Population	1.64	1.53	1.44	-6.0

## Trends in Injuries & Fatalities

Figure 1.3

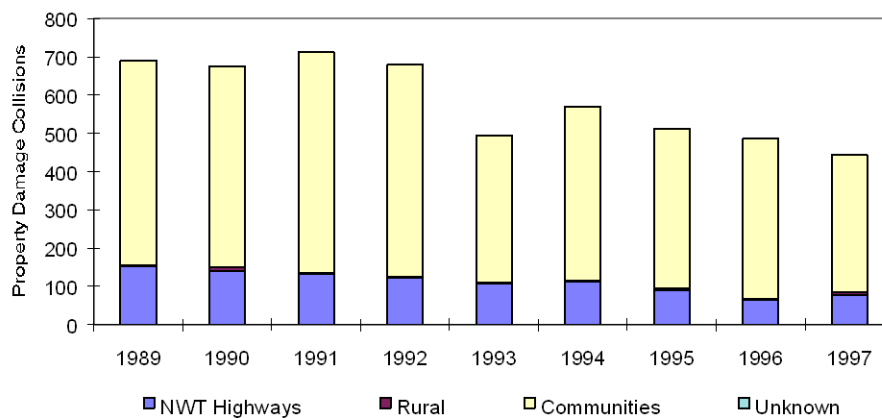


### 3 Year Summary

	Persons Injured					Persons Killed			
	1995	1996	1997	% Change		1995	1996	1997	% Change
NWT Highways	89	85	100	17.6	4	6	6		0.0
Rural	1	2	5	150.0	0	0	1		-
Communities	134	120	116	-3.3	0	4	1		-75.0
<b>Total</b>	<b>224</b>	<b>207</b>	<b>221</b>	<b>6.8</b>	<b>4</b>	<b>10</b>	<b>8</b>		<b>-20.0</b>

## Trends in Property Damage Collisions

Figure 1.4

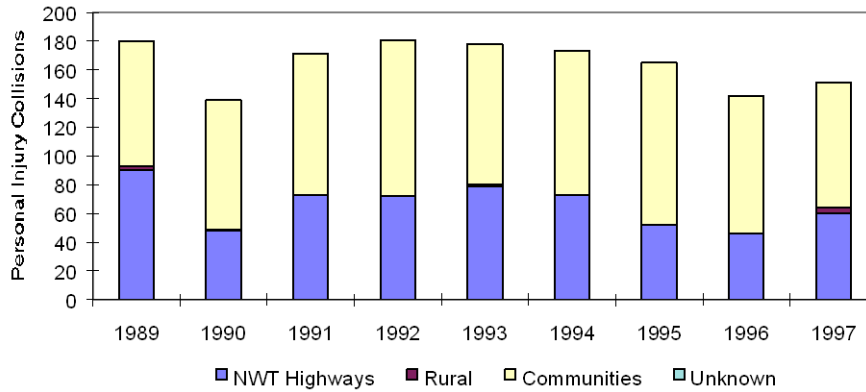


### 3 Year Summary

	Property Damage Collisions			
	1995	1996	1997	% Change
NWT Highways	94	70	78	11.4
Rural	8	3	7	133.3
Communities	411	413	358	-13.3
<b>Total</b>	<b>513</b>	<b>486</b>	<b>443</b>	<b>-8.8</b>

## Trends in Personal Injury Collisions

Figure 1.5

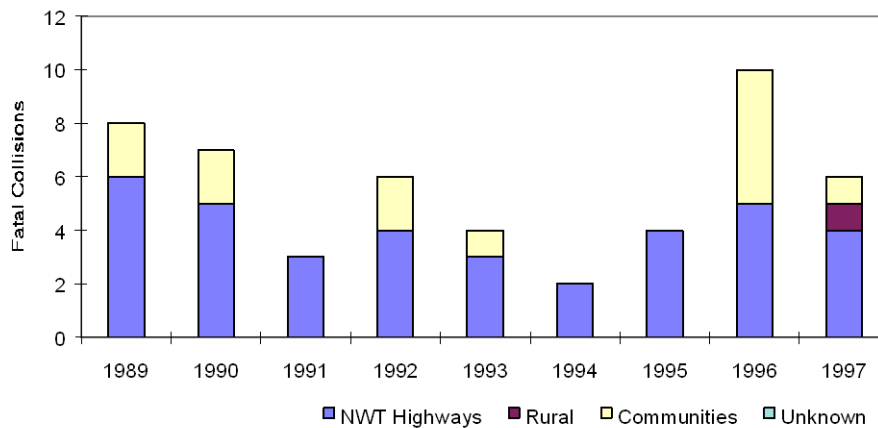


### 3 Year Summary

	Personal Injury Collisions			
	1995	1996	1997	% Change
NWT Highways	54	50	60	20.0
Rural	1	2	4	100.0
Communities	110	90	87	-3.3
<b>Total</b>	<b>165</b>	<b>142</b>	<b>151</b>	<b>6.3</b>

## Trends in Fatal Collisions

Figure 1.6

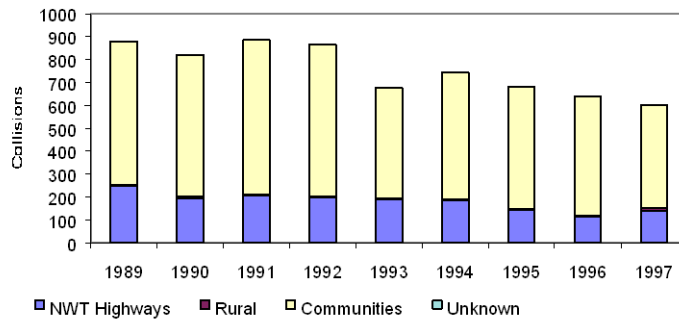


### 3 Year Summary

	Fatal Collisions			
	1995	1996	1997	% Change
NWT Highways	4	6	4	-33.3
Rural	0	0	1	-
Communities	0	4	1	-75.0
<b>Total</b>	<b>4</b>	<b>10</b>	<b>6</b>	<b>-40.0</b>

Trends in All Reported Collisions

Figure 1.7



### 3 Year Summary

	1995	1996	1997	% Change
NWT Highways	152	126	142	12.7
Rural	9	5	12	140.0
Communities	521	507	446	-12.0
<b>Total</b>	<b>682</b>	<b>638</b>	<b>600</b>	<b>-6.0</b>

### Property Damage Collisions by Month and Year

Figure 1.8

	Avg. 89										
Month	1989	1990	1991	1992	1993	1994	1995	1996	to 96	1997 % Change*	
January	66	63	86	74	46	52	50	54	61	53	-13.6
February	66	66	72	68	56	72	46	59	63	45	-28.7
March	65	68	72	68	52	50	78	56	64	44	-30.8
April	51	30	48	59	30	32	32	31	39	26	-33.5
May	39	29	31	45	23	33	31	26	32	23	-28.4
June	39	44	57	35	23	31	24	32	36	32	-10.2
July	47	51	57	48	33	39	38	36	44	37	-15.2
August	47	54	42	51	35	42	39	24	42	37	-11.4
September	41	46	49	48	39	34	29	29	39	25	-36.5
October	76	69	65	65	52	59	38	56	60	48	-20.0
November	84	71	59	64	53	73	49	42	62	26	-58.0
December	70	84	74	54	53	53	59	41	61	47	-23.0
Total	691	675	712	679	495	570	513	486	603	443	-26.5

\* % change is a comparison between 1997 and the 1989-96 average.

## Personal Injury Collisions by Month and Year

Figure 1.9

Month	1989	1990	1991	1992	1993	1994	1995	1996	Avq. 89 to 96	1997 % Change*	
January	13	8	15	19	16	11	16	15	14	13	-8.0
February	17	8	13	12	16	7	14	15	13	19	49.0
March	14	15	17	12	16	9	20	10	14	16	13.3
April	3	6	5	9	13	6	12	7	8	19	149.2
May	11	5	16	12	13	9	11	7	11	11	4.8
June	12	20	24	18	17	18	15	10	17	6	-64.2
July	26	20	23	15	24	18	15	16	20	8	-59.2
August	17	14	16	18	9	23	18	11	16	16	1.6
September	16	8	13	19	12	14	11	14	13	10	-25.2
October	18	15	14	16	16	20	10	15	16	14	-9.7
November	19	7	5	13	14	19	12	9	12	10	-18.4
December	14	13	10	18	12	19	11	13	14	9	-34.5
Total	180	139	171	181	178	173	165	142	166	151	-9.1

## Fatal Collisions by Month and Year

Figure 1.10

Month	1989	1990	1991	1992	1993	1994	1995	1996	Avq. 89 to 96	1997 % Change*	
January	0	1	0	0	0	0	0	0	0.1	0	-100.0
February	0	0	0	0	0	0	0	0	0.0	0	-
March	0	0	0	0	1	0	0	2	0.4	2	433.3
April	1	1	0	1	1	0	1	1	0.8	0	-100.0
May	1	0	0	0	0	1	0	1	0.4	1	166.7
June	3	0	2	3	0	0	0	1	1.1	1	-11.1
July	1	2	0	0	1	0	1	1	0.8	1	33.3
August	0	0	1	0	0	0	0	3	0.5	1	100.0
September	0	0	0	0	0	0	1	0	0.1	0	-100.0
October	0	2	0	1	0	1	0	1	0.6	0	-100.0
November	1	0	0	1	1	0	1	0	0.5	0	-100.0
December	1	1	0	0	0	0	0	0	0.3	0	-100.0
Total	8	7	3	6	4	2	4	10	5.5	6	9.1

\* % change is a comparison between 1997 and the 1989-96 average.

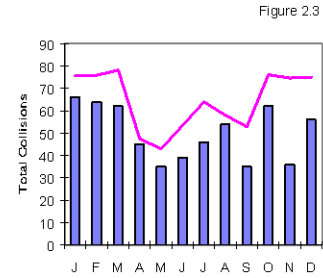
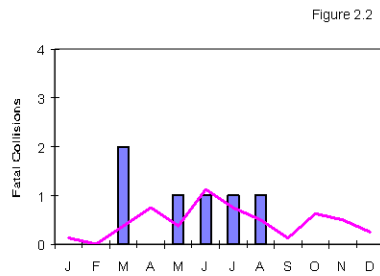
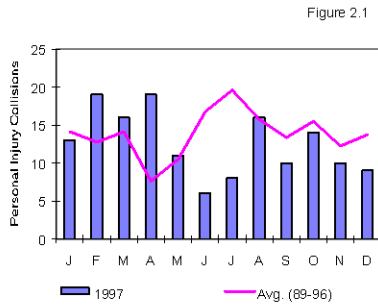
**Total Collisions by Month and Year**

Figure 1.11

	Avg. 89										
Month	1989	1990	1991	1992	1993	1994	1995	1996	to 96	1997 % Change*	
January	79	72	101	93	62	63	66	69	76	66	-12.7
February	83	74	85	80	72	79	60	74	76	64	-15.7
March	79	83	89	80	69	59	98	68	78	62	-20.6
April	55	37	53	69	44	38	45	39	48	45	-5.3
May	51	34	47	57	36	43	42	34	43	35	-18.6
June	54	64	83	56	40	49	39	43	54	39	-27.1
July	74	73	80	63	58	57	54	53	64	46	-28.1
August	64	68	59	69	44	65	57	38	58	54	-6.9
September	57	54	62	67	51	48	41	43	53	35	-33.8
October	94	86	79	82	68	80	48	72	76	62	-18.6
November	104	78	64	78	68	92	62	51	75	36	-51.8
December	85	98	84	72	65	72	70	54	75	56	-25.3
Total	879	821	886	866	677	745	682	638	774	600	-22.5

\* % change is a comparison between 1997 and the 1989-96 average.

## Collisions by Month of Occurrence

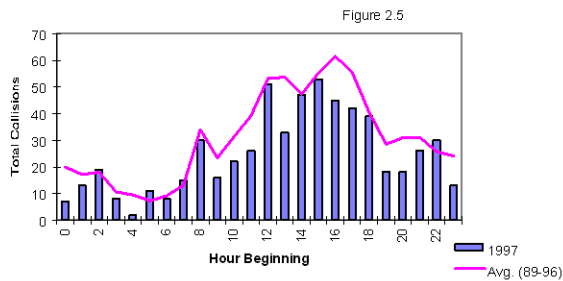


## Collisions & Victims by Month of Occurrence

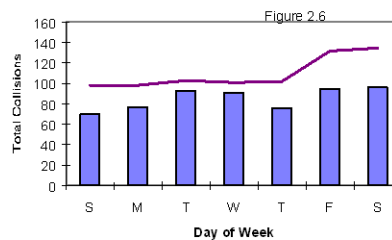
Figure 2.4

Month	Number of Collisions				Number of Victims	
	Property Damage	Personal Injury	Fatal	Total	Injured	Killed
January	53	13	0	66	22	0
February	45	19	0	64	28	0
March	44	16	2	62	31	4
April	26	19	0	45	20	0
May	23	11	1	35	12	1
June	32	6	1	39	9	1
July	37	8	1	46	11	1
August	37	16	1	54	27	1
September	25	10	0	35	15	0
October	48	14	0	62	19	0
November	26	10	0	36	12	0
December	47	9	0	56	15	0
<b>Total</b>	<b>443</b>	<b>151</b>	<b>6</b>	<b>600</b>	<b>221</b>	<b>8</b>

## Total Collisions by Time of Day



## Total Collisions by Day of Week



**Collisions by Time of Day & Day of Week\***

Figure 2.7

Collision Hour	Sunday	Monday	Tuesday	Wednesday	Thursday	Friday	Saturday	Total	%
12 to 1 a.m.	1	1	0	0	3	1	1	7	1.2
1 to 2 a.m.	2	2	1	2	2	1	3	13	2.2
2 to 3 a.m.	4	2	3	6	0	1	3	19	3.2
3 to 4 a.m.	5	2	0	1	0	0	0	8	1.3
4 to 5 a.m.	2	0	0	0	0	0	0	2	0.3
5 to 6 a.m.	3	0	0	0	1	1	6	11	1.8
6 to 7 a.m.	2	0	2	1	1	1	1	8	1.3
7 to 8 a.m.	1	4	3	1	4	2	0	15	2.5
8 to 9 a.m.	1	6	3	5	3	9	3	30	5.0
9 to 10 a.m.	2	1	2	4	3	3	1	16	2.7
10 to 11 a.m.	2	2	4	3	2	7	2	22	3.7
11 to 12 a.m.	3	4	3	3	6	3	4	26	4.3
12 to 1 p.m.	7	3	8	9	3	12	9	51	8.5
1 to 2 p.m.	1	4	6	7	6	5	4	33	5.5
2 to 3 p.m.	9	5	8	6	6	5	8	47	7.9
3 to 4 p.m.	7	5	9	8	10	5	9	53	8.9
4 to 5 p.m.	4	6	10	6	5	6	8	45	7.5
5 to 6 p.m.	2	11	6	6	4	5	8	42	7.0
6 to 7 p.m.	4	3	8	4	5	10	5	39	6.5
7 to 8 p.m.	4	5	2	2	3	1	1	18	3.0
8 to 9 p.m.	0	4	4	1	1	4	4	18	3.0
9 to 10 p.m.	2	3	4	4	3	3	7	26	4.3
10 to 11 p.m.	1	1	4	7	4	7	6	30	5.0
11 to 12 p.m.	0	2	2	5	0	3	1	13	2.2
Not Stated	1	1	1	0	1	0	2	6	1.0
Total	70	77	93	91	76	95	96	598	
%	11.7	12.9	15.6	15.2	12.7	15.9	16.1	100.0	

\* Excludes collisions in which Day of Week was unknown.



## Major Contributing Factors – Section 3

### Collisions by Severity Where Human Condition Was a Major Contributing Factor

Figure 3.1

Human Condition	Property Damage	Personal Injury	Fatal	% of Total	
				Total	Factors
Fatigued, Fell Asleep	2	1	0	3	0.5
Inexperience	0	0	0	0	0.0
Under Influence - Alcohol	21	13	0	34	5.7
Under Influence - Drugs	2	0	0	2	0.3
Sudden Illness, Lost Consciousness	0	1	0	1	0.2
Other Driver Condition	0	0	0	0	0.0
<b>Total</b>	<b>25</b>	<b>15</b>	<b>0</b>	<b>40</b>	<b>6.7</b>

### Collisions by Severity Where Human Action Was a Major Contributing Factor

Figure 3.2

Human Action	Property Damage	Personal Injury	Fatal	% of Total	
				Total	Factors
Following Too Closely	27	12	0	39	6.5
Distracted, Inattentive	0	0	0	0	0.0
Driving Too Fast for Conditions	16	16	1	33	5.5
Improper Turning or Passing	13	0	0	13	2.2
Failed to Yield Right-of-Way	46	23	2	71	11.8
Disobeyed Traffic Control/Officer	3	1	0	4	0.7
Driving on Wrong Side of Road	7	5	0	12	2.0
Driving in Wrong Direction	0	0	0	0	0.0
Backing Unsafely	87	3	0	90	15.0
Lost Control	77	43	2	122	20.3
Other Driver Action	0	0	0	0	0.0
<b>Total</b>	<b>276</b>	<b>103</b>	<b>5</b>	<b>384</b>	<b>64.0</b>

### Collisions by Severity Where Vehicle Condition Was a Major Contributing Factor

Figure 3.3

Vehicle Condition	Property Damage	Personal Injury	Fatal	% of Total	
				Total	Factors
Defective Brakes	1	1	0	2	0.3
Defective Steering	0	2	0	2	0.3
Defective Lights	0	1	0	1	0.2
Tire Blown Out	7	1	0	8	1.3
Unsecured Load, Spilled Load	0	0	0	0	0.0
Oversized Load, Overload	1	0	0	1	0.2
Visibility Obstructed	3	0	0	3	0.5
Other Vehicle Contributing Factor	10	2	0	12	2.0
<b>Total</b>	<b>22</b>	<b>7</b>	<b>0</b>	<b>29</b>	<b>4.8</b>

## Major Contributing Factors – Section 3

**Collisions by Severity Where Environmental Condition Was a Major Contributing Factor**

Figure 3.4

Environmental Condition	Property Damage	Personal Injury	Fatal	% of Total	
				Total	Factors
Animal on Roadway	9	5	0	14	2.3
Road Surface or Condition	24	4	0	28	4.7
Obstruction/Debris on Road	1	1	0	2	0.3
View Obstructed, Glare, Reflection	2	0	0	2	0.3
Weather or Other Acts of God	7	2	0	9	1.5
Other Environmental Factor	0	0	0	0	0.0
<b>Total</b>	<b>43</b>	<b>12</b>	<b>0</b>	<b>55</b>	<b>9.2</b>

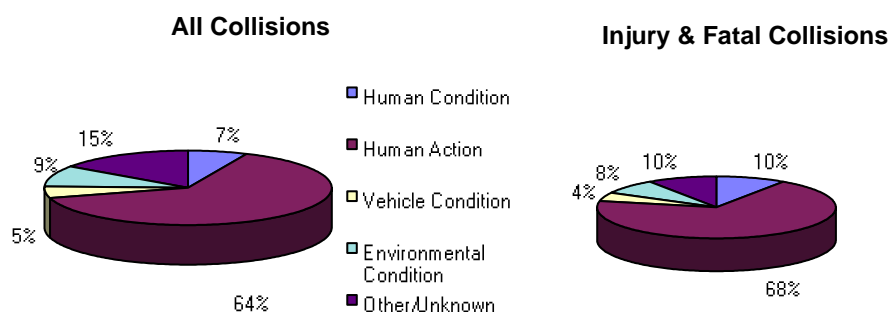
**Collisions by Severity Where Major Contributing Factor Was Unspecified or Unknown**

Figure 3.5

Factor	Property Damage	Personal Injury	Fatal	% of Total	
				Total	Factors
Unspecified	20	13	0	33	5.5
Unknown	57	1	1	59	9.8
<b>Total</b>	<b>77</b>	<b>14</b>	<b>1</b>	<b>92</b>	<b>15.3</b>
<b>Total All Factors</b>	<b>443</b>	<b>151</b>	<b>6</b>	<b>600</b>	<b>100.0</b>

**Major Contributing Factors by Collision Severity**

Figure 3.6



TAIS recognizes that a collision is usually the result of a chain of events. The collision data system accepts up to four contributing factors for each vehicle involved in a collision. During the analysis of collisions, knowledge of the factors is important. By removing any one of the factors, the collision may be avoided.

An example: Because of inattention, a driver may have failed to see a stop sign behind some trees and thereby reduced his/her stopping time. The car's brakes, being in poor condition, caused the car to spin out of control on ice and collide with another vehicle that was speeding through the intersection. The collision may not have occurred if any of these factors were not present.

## Major Contributing Factors – Section 3

### Collisions by Road System Where Human Condition Was a Major Contributing Factor

Figure 3.7

Human Condition	NWT			% of Total	
	Highways	In Communities	Rural	Total	Factors
Fatigued, Fell Asleep	1	2	0	3	0.5
Inexperience	0	0	0	0	0.0
Under Influence - Alcohol	9	24	1	34	5.7
Under Influence - Drugs	0	2	0	2	0.3
Sudden Illness, Lost Consciousness	0	1	0	1	0.2
Other Driver Condition	0	0	0	0	0.0
<b>Total</b>	<b>10</b>	<b>29</b>	<b>1</b>	<b>40</b>	<b>6.7</b>

### Collisions by Road System Where Human Action Was a Major Contributing Factor

Figure 3.8

Human Action	NWT			% of Total	
	Highways	In Communities	Rural	Total	Factors
Following Too Closely	5	34	0	39	6.5
Distracted, Inattentive	0	0	0	0	0.0
Driving Too Fast for Conditions	10	22	1	33	5.5
Improper Turning or Passing	2	11	0	13	2.2
Failed to Yield Right-of-Way	5	66	0	71	11.8
Disobeyed Traffic Control/Officer	1	3	0	4	0.7
Driving on Wrong Side of Road	5	7	0	12	2.0
Driving in Wrong Direction	0	0	0	0	0.0
Backing Unsafely	0	90	0	90	15.0
Lost Control	56	61	5	122	20.3
Other Driver Action	0	0	0	0	0.0
<b>Total</b>	<b>84</b>	<b>294</b>	<b>6</b>	<b>384</b>	<b>64.0</b>

### Collisions by Road System Where Vehicle Condition Was a Major Contributing Factor

Figure 3.9

Vehicle Condition	NWT			% of Total	
	Highways	In Communities	Rural	Total	Factors
Defective Brakes	0	2	0	2	0.3
Defective Steering	1	1	0	2	0.3
Defective Lights	0	1	0	1	0.2
Tire Blown Out	6	1	1	8	1.3
Unsecured Load, Spilled Load	0	0	0	0	0.0
Oversized Load, Overload	0	1	0	1	0.2
Visibility Obstructed	1	2	0	3	0.5
Other Vehicle Contributing Factor	4	7	1	12	2.0
<b>Total</b>	<b>12</b>	<b>15</b>	<b>2</b>	<b>29</b>	<b>4.8</b>

## Major Contributing Factors – Section 3

**Collisions by Road System Where Environmental Condition Was a Major Contributing Factor**

Figure 3.10

<u>Environmental Condition</u>	NWT			% of Total	
	Highways	In Communities	Rural	Total	Factors
Animal on Roadway	12	2	0	14	2.3
Road Surface or Condition	13	13	2	28	4.7
Obstruction/Debris on Road	1	1	0	2	0.3
View Obstructed, Glare, Reflection	0	2	0	2	0.3
Weather or Other Acts of God	5	4	0	9	1.5
Other Environmental Factor	0	0	0	0	0.0
<b>Total</b>	<b>31</b>	<b>22</b>	<b>2</b>	<b>55</b>	<b>9.2</b>

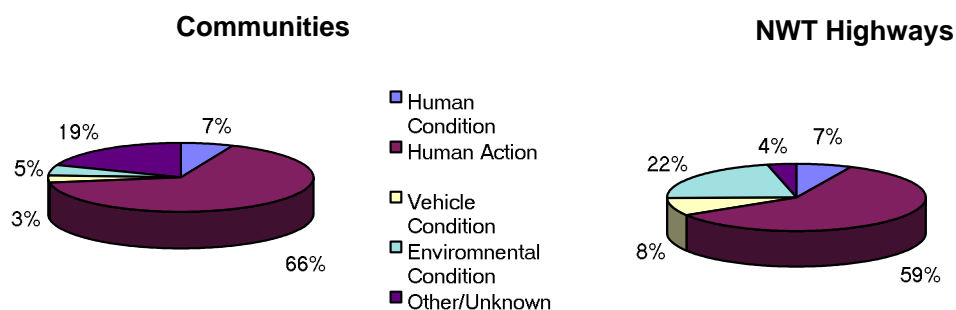
**Collisions by Road System Where Major Contributing Factor Was Unspecified or Unknown**

Figure 3.11

<u>Factor</u>	NWT			% of Total	
	Highways	In Communities	Rural	Total	Factors
Unspecified	3	29	1	33	5.5
Unknown	2	57	0	59	9.8
<b>Total</b>	<b>5</b>	<b>86</b>	<b>1</b>	<b>92</b>	<b>15.3</b>
<b>Total All Factors</b>	<b>142</b>	<b>446</b>	<b>12</b>	<b>600</b>	<b>100.0</b>

**Major Contributing Factors in Collisions - Communities and NWT Highways**

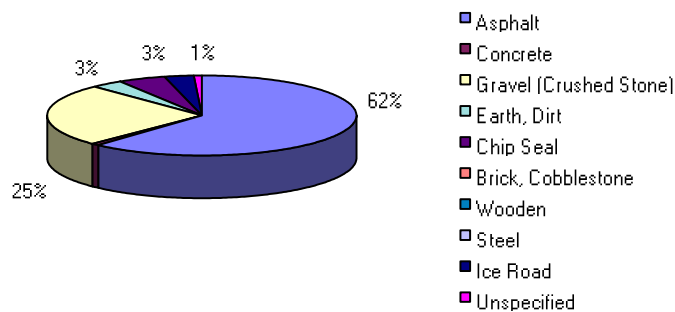
Figure 3.12



**Collisions by Road Surface Type and Severity**

Figure 4.1

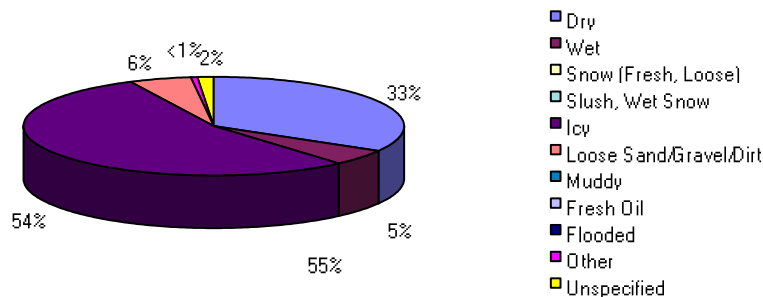
Road Surface Type	Property Damage	Personal Injury	Fatal	Total	%
Asphalt	297	71	2	370	61.7
Concrete	3	2	0	5	0.8
Gravel (Crushed Stone)	101	50	1	152	25.3
Earth, Dirt	14	5	1	20	3.3
Chip Seal	15	13	1	29	4.8
Brick, Cobblestone	0	0	0	0	0.0
Wooden	0	0	0	0	0.0
Steel	0	0	0	0	0.0
Ice Road	8	10	1	19	3.2
Unspecified	5	0	0	5	0.8
<b>Total</b>	<b>443</b>	<b>151</b>	<b>6</b>	<b>600</b>	<b>100.0</b>



**Collisions by Road Surface Environmental Condition and Severity**

Figure 4.2

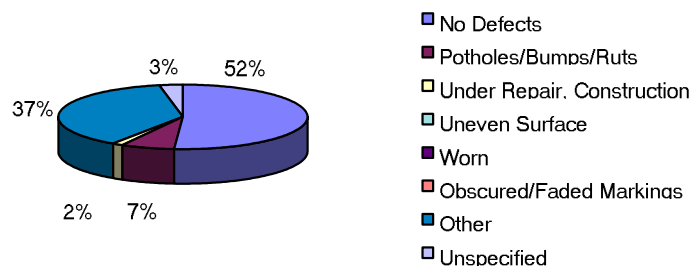
Surface Condition	Property Damage	Personal Injury	Fatal	Total	%
Dry	148	49	3	200	33.3
Wet	19	12	0	31	5.2
Snow (Fresh, Loose)	0	0	0	0	0.0
Slush, Wet Snow	0	0	0	0	0.0
Icy	242	81	2	325	54.2
Loose Sand/Gravel/Dirt	23	9	1	33	5.5
Muddy	0	0	0	0	0.0
Fresh Oil	0	0	0	0	0.0
Flooded	0	0	0	0	0.0
Other	2	0	0	2	0.3
Unspecified	9	0	0	9	1.5
<b>Total</b>	<b>443</b>	<b>151</b>	<b>6</b>	<b>600</b>	<b>100</b>



### Collisions by Road Defect and Severity

Figure 4.3

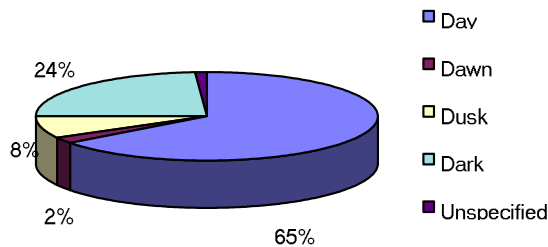
<b>Road Defect</b>	<b>Property Damage</b>	<b>Personal Injury</b>	<b>Fatal</b>	<b>Total</b>	<b>%</b>
No Defects	221	79	6	306	51.0
Potholes/Bumps/Ruts	29	14	0	43	7.2
Under Repair, Construction	8	0	0	8	1.3
Uneven Pavement Surface	0	0	0	0	0.0
Worn	0	0	0	0	0.0
Obscured or Faded Markings	0	0	0	0	0.0
Other	170	54	0	224	37.3
Unspecified	15	4	0	19	3.2
<b>Total</b>	<b>443</b>	<b>151</b>	<b>6</b>	<b>600</b>	<b>100.0</b>



### Collisions by Light Condition and Severity

Figure 4.4

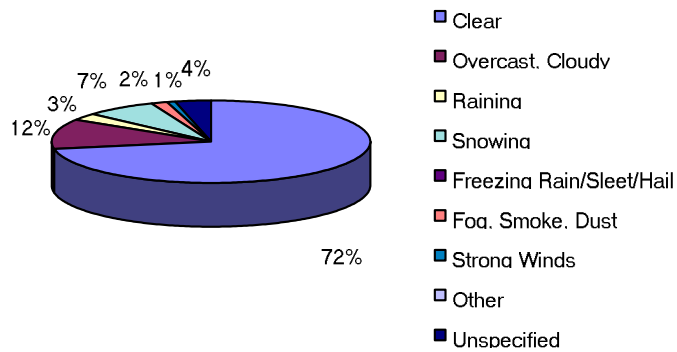
<b>Light Condition</b>	<b>Property Damage</b>	<b>Personal Injury</b>	<b>Fatal</b>	<b>Total</b>	<b>%</b>
Day	297	87	5	389	64.8
Dawn	9	4	0	13	2.2
Dusk	41	6	1	48	8.0
Dark	90	54	0	144	24.0
Unspecified	6	0	0	6	1.0
<b>Total</b>	<b>443</b>	<b>151</b>	<b>6</b>	<b>600</b>	<b>100.0</b>



**Collisions by Weather Condition and Severity**

Figure 4.5

<b>Weather Condition</b>	<b>Property Damage</b>	<b>Personal Injury</b>	<b>Fatal</b>	<b>Total</b>	<b>%</b>
Clear (Sunny)	318	112	4	434	72.3
Overcast, Cloudy (No Precipitation)	51	18	1	70	11.7
Raining	11	5	0	16	2.7
Snowing	32	10	1	43	7.2
Freezing Rain/Sleet/Hail	1	0	0	1	0.2
Visibility Limitations (fog, dust, etc.)	6	3	0	9	1.5
Strong Winds	4	1	0	5	0.8
Other	1	0	0	1	0.2
Unspecified	19	2	0	21	3.5
<b>Total</b>	<b>443</b>	<b>151</b>	<b>6</b>	<b>600</b>	<b>100.0</b>



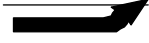


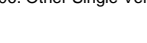
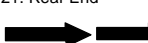
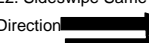
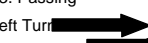
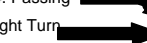
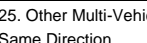
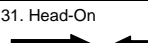
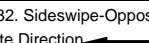
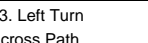
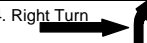
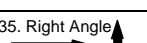
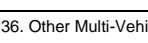
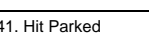
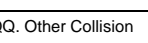
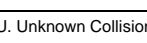


**Collisions by Configuration and Severity**

Figure 4.6

Configuration*	Property Damage	Personal Injury	Fatal	Total	% of Total
01. Hit Moving Object					
a) With Animal	9	3	0	12	2.0
b) With Pedestrian	0	19	0	19	3.2
c) Other	5	0	0	5	0.8
02. Hit Stationary Object	51	13	1	65	8.7
03. Off Road Left					
a) With Rollover	6	11	1	18	3.0
b) No Rollover	6	2	0	8	1.3
04. Off Road Right					
a) With Rollover	14	23	0	37	6.2
b) No Rollover	21	9	0	30	5.0
05. Rollover on Roadway	2	2	1	5	0.8
06. Other Single Vehicle	0	0	0	0	0.0
21. Rear End	51	25	0	76	12.7
22. Sideswipe - Same Direction	8	1	0	9	1.5
23. Passing - Left Turn	2	0	0	2	0.3
24. Passing - Right Turn	1	1	0	2	0.3
25. Other Multi-Vehicle Same Direction	0	0	0	0	0.0
31. Head-On	8	4	1	13	2.2
32. Sideswipe - Opposite Direction	15	3	0	18	3.0
33. Left Turn Across Path	13	3	0	16	2.7
34. Right Turn Including Conflict	5	1	0	6	1.0
35. Right Angle	65	20	2	87	14.5
36. Other Multi-Vehicle Opposite Direction	23	3	0	26	4.3
41. Hit Parked Vehicle	135	4	0	139	23.2
QQ. Other Collision Type	2	4	0	6	1.0
UU. Unknown Collision Type	1	0	0	1	0.2
Total	443	151	6	600	100.0

**\*Collision Configurations**

01. Hit Moving Object 	02. Hit Stationary Object 	03. Off Road Left 	04. Off Road Right 	05. Rollover on Roadway 
06. Other Single Vehicle 	21. Rear End 	22. Sideswipe Same-Direction 	23. Passing - Left Turn 	24. Passing - Right Turn 
25. Other Multi-Vehicle Same Direction 	31. Head-On 	32. Sideswipe-Opposite Direction 	33. Left Turn Across Path 	34. Right Turn Including Conflict 
35. Right Angle 	36. Other Multi-Vehicle Opposite Direction 	41. Hit Parked Vehicle 	QQ. Other Collision Type 	UU. Unknown Collision Type 



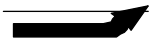


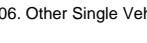
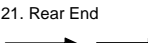
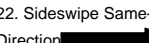
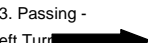
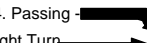
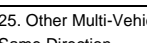
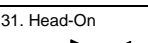
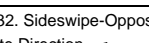
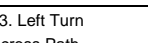
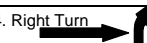

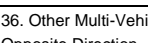
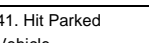
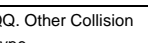
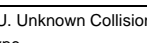


**Collisions by Configuration and Road System**

Figure 4.7

Configuration*	NWT Highways	In Communities	Rural	Total	% of Total
01. Hit Moving Object					
a) With Animal	11	1	0	12	2.0
b) With Pedestrian	1	18	0	19	3.2
c) Other	1	4	0	5	0.8
02. Hit Stationary Object	5	57	3	65	10.8
03. Off Road Left					
a) With Rollover	18	0	0	18	3.0
b) No Rollover	5	3	0	8	1.3
04. Off Road Right					
a) With Rollover	32	5	0	37	6.2
b) No Rollover	23	5	2	30	5.0
05. Rollover on Roadway	2	1	2	5	0.8
06. Other Single Vehicle	0	0	0	0	0.0
21. Rear End	14	62	0	76	12.7
22. Sideswipe - Same Direction	1	8	0	9	1.5
23. Passing - Left Turn	0	2	0	2	0.3
24. Passing - Right Turn	0	2	0	2	0.3
25. Other Multi-Vehicle Same Direction	0	0	0	0	0.0
31. Head-On	3	8	2	13	2.2
32. Sideswipe - Opposite Direction	8	10	0	18	3.0
33. Left Turn Across Path	2	14	0	16	2.7
34. Right Turn Including Conflict	0	6	0	6	1.0
35. Right Angle	8	79	0	87	14.5
36. Other Multi-Vehicle Opposite Direction	2	24	0	26	4.3
41. Hit Parked Vehicle	2	135	2	139	23.2
QQ. Other Collision Type	4	1	1	6	1.0
UU. Unknown Collision Type	0	1	0	1	0.2
Total	142	446	12	600	100.0

**\*Collision Configurations**

01. Hit Moving Object 	02. Hit Stationary Object 	03. Off Road Left 	04. Off Road Right 	05. Rollover on Roadway 
06. Other Single Vehicle 	21. Rear End 	22. Sideswipe Same-Direction 	23. Passing - Left Turn 	24. Passing - Right Turn 
25. Other Multi-Vehicle Same Direction 	31. Head-On 	32. Sideswipe-Opposite Direction 	33. Left Turn Across Path 	34. Right Turn Including Conflict 
35. Right Angle 	36. Other Multi-Vehicle Opposite Direction 	41. Hit Parked Vehicle 	QQ. Other Collision Type 	UU. Unknown Collision Type 

## Collisions by Collision Site and Severity

Figure 4.8

<b>Collision Site</b>	<b>Property Damage</b>	<b>Personal Injury</b>	<b>Fatal</b>	<b>Total</b>	<b>%</b>
Non-Intersection	154	84	5	243	40.5
Intersection - Two Public Roadways	95	45	0	140	23.3
Intersection - Parking Lot, Driveway	79	17	1	97	16.2
Railroad Level Crossing	0	0	0	0	0.0
Bridge, Overpass, Viaduct	1	1	0	2	0.3
Tunnel, Underpass	0	0	0	0	0.0
Passing, Climbing Lane	0	0	0	0	0.0
Ramp	2	0	0	2	0.3
Other	110	4	0	114	19.0
Unknown	2	0	0	2	0.3
<b>Total</b>	<b>443</b>	<b>151</b>	<b>6</b>	<b>600</b>	<b>100.0</b>

## Collisions by Collision Site and Road System

Figure 4.9

<b>Collision Site</b>	<b>NWT Highways</b>	<b>In Communities</b>	<b>Rural</b>	<b>Total</b>	<b>%</b>
Non-Intersection	119	115	9	243	40.5
Intersection - Two Public Roadways	15	125	0	140	23.3
Intersection - Parking Lot, Driveway	7	89	1	97	16.2
Railroad Level Crossing	0	0	0	0	0.0
Bridge, Overpass, Viaduct	1	1	0	2	0.3
Tunnel, Underpass	0	0	0	0	0.0
Passing, Climbing Lane	0	0	0	0	0.0
Ramp	0	2	0	2	0.3
Other	0	112	2	114	19.0
Unknown	0	2	0	2	0.3
<b>Total</b>	<b>142</b>	<b>446</b>	<b>12</b>	<b>600</b>	<b>100.0</b>

## Collisions by Roadway Alignment and Severity

Figure 4.10

<b>Road Alignment</b>	<b>Property Damage</b>	<b>Personal Injury</b>	<b>Fatal</b>	<b>Total</b>	<b>%</b>
Straight & Level	333	98	4	435	72.5
Straight with Grade	47	11	0	58	9.7
Curved and Level	37	23	1	61	10.2
Curve with Grade	17	14	1	32	5.3
Top of Hill or Grade	7	4	0	11	1.8
Bottom of Hill or Grade	0	0	0	0	0.0
Other	0	0	0	0	0.0
Unknown	2	1	0	3	0.5
<b>Total</b>	<b>443</b>	<b>151</b>	<b>6</b>	<b>600</b>	<b>100.0</b>

**Collisions by Roadway Type and Severity**

Figure 4.11

Road Type	Property Damage	Personal Injury	Fatal	Total	%
One-Way Two Lane	3	0	0	3	0.5
One-Way Multi Lane	0	0	0	0	0.0
Undivided Two-Way Two Lane	291	131	5	427	71.2
Undivided Two-Way Multi Lane	0	0	0	0	0.0
Divided Barrier Median	12	5	0	17	2.8
Divided with Median No Barrier	0	0	0	0	0.0
Divided Divider Unspecified	15	6	0	21	3.5
Other	120	9	1	130	21.7
Unknown	2	0	0	2	0.3
<b>Total</b>	<b>443</b>	<b>151</b>	<b>6</b>	<b>600</b>	<b>100.0</b>

**Collision Sequence of Events by Severity**

Figure 4.12

Non-Moving Objects	Property Damage	Personal Injury	Fatal	Total	%
Hit Parked Trailer	1	0	0	1	0.2
Hit Non-Fixed Object	0	1	0	1	0.2
Hit Building	7	0	0	7	1.2
Hit Ditch	0	0	0	0	0.0
Hit Embankment Dirt Pile Rock	2	1	0	3	0.5
Hit Culvert End Drainage Structure	0	1	0	1	0.2
Hit Tree Bush Hedge	3	3	1	7	1.2
Hit Utility Pole Lamp Pole	19	4	0	23	3.8
Hit Curb	5	0	0	5	0.8
Hit Post	2	1	0	3	0.5
Hit Traffic Barrier	12	2	0	14	2.3
Hit Fixed Object Part of Road Structure	0	0	0	0	0.0
Hit Fixed Object NOT Part of Road Structure	0	0	0	0	0.0
Hit Other Type Fixed Object	0	0	0	0	0.0
<b>Sub Total Fixed Objects</b>	<b>51</b>	<b>13</b>	<b>1</b>	<b>65</b>	<b>10.8</b>
<b>Moveable Objects</b>					
Another Road Vehicle	326	65	3	394	65.7
Animal	9	3	0	12	2.0
Pedestrian	0	19	0	19	3.2
Other Moveable Object	5	0	0	5	0.8
<b>Sub Total Moveable Objects</b>	<b>340</b>	<b>87</b>	<b>3</b>	<b>430</b>	<b>71.7</b>
<b>Non-Collision Events</b>					
Ran Off Road	27	11	0	38	6.3
Rollover	22	36	2	60	10.0
Jack Knife or Trailer Swing	0	0	0	0	0.0
Fire or Explosion	0	0	0	0	0.0
Load Spill	0	0	0	0	0.0
Load Shift	0	0	0	0	0.0
Submersion	0	0	0	0	0.0
Other Non-Collision Event	0	0	0	0	0.0
<b>Sub Total Non-Collision Events</b>	<b>49</b>	<b>47</b>	<b>2</b>	<b>98</b>	<b>16.3</b>
<b>Other/Unknown Event</b>	<b>3</b>	<b>4</b>	<b>0</b>	<b>7</b>	<b>1.2</b>
<b>Grand Total</b>	<b>443</b>	<b>151</b>	<b>6</b>	<b>600</b>	<b>100.0</b>

## Collision Sequence of Events by Road System

Figure 4.13

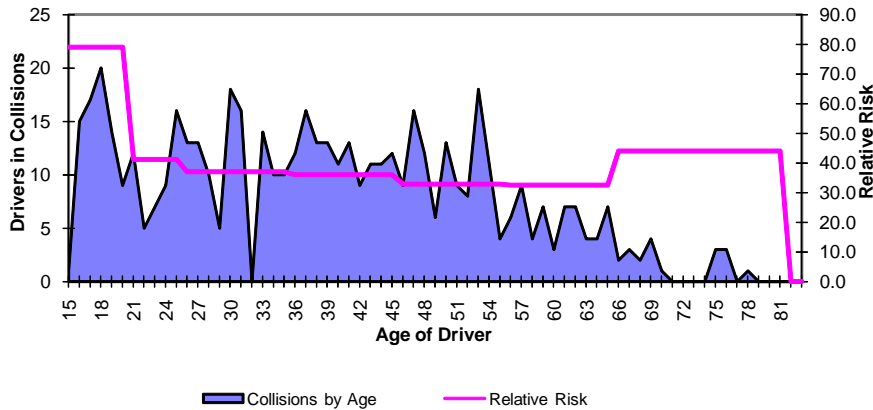
	NWT Highways	In Communities	Rural	Total	%
<b>Non-Moving Objects</b>					
Hit Parked Trailer	0	1	0	1	0.2
Hit Non-Fixed Object	0	1	0	1	0.2
Hit Building	0	7	0	7	1.2
Hit Ditch	0	0	0	0	0.0
Hit Embankment, Dirt Pile, Rock	1	1	1	3	0.5
Hit Culvert End, Drainage Structure	0	1	0	1	0.2
Hit Tree, Bush, Hedge	1	5	1	7	1.2
Hit Utility Pole, Lamp Pole	2	20	1	23	3.8
Hit Curb	0	5	0	5	0.8
Hit Post	0	3	0	3	0.5
Hit Traffic Barrier	1	13	0	14	2.3
Hit Fixed Object Part of Road Structure	0	0	0	0	0.0
Hit Fixed Object NOT Part of Road Structure	0	0	0	0	0.0
Hit Other Type Fixed Object	0	0	0	0	0.0
<b>Sub Total Fixed Objects</b>	<b>5</b>	<b>57</b>	<b>3</b>	<b>65</b>	<b>10.8</b>
<b>Moveable Objects</b>					
Another Road Vehicle	40	350	4	394	65.7
Animal	11	1	0	12	2.0
Pedestrian	1	18	0	19	3.2
Other Moveable Object	1	4	0	5	0.8
<b>Sub Total Moveable Objects</b>	<b>53</b>	<b>373</b>	<b>4</b>	<b>430</b>	<b>71.7</b>
<b>Non-Collision Events</b>					
Ran Off Road	28	8	2	38	6.3
Rollover	52	6	2	60	10.0
Jack Knife or Trailer Swing	0	0	0	0	0.0
Fire or Explosion	0	0	0	0	0.0
Load Spill	0	0	0	0	0.0
Load Shift	0	0	0	0	0.0
Submersion	0	0	0	0	0.0
Other Non-Collision Event	0	0	0	0	0.0
<b>Sub Total Non-Collision Events</b>	<b>80</b>	<b>14</b>	<b>4</b>	<b>98</b>	<b>16.3</b>
<b>Unknown Event</b>	<b>4</b>	<b>2</b>	<b>1</b>	<b>7</b>	<b>1.2</b>
<b>Grand Total</b>	<b>142</b>	<b>446</b>	<b>12</b>	<b>600</b>	<b>100.0</b>

**Licensed Drivers and Drivers in Collisions by Driver Age**

Figure 5.1

	Under 16	16 to 19	20 to 24	25 to 34	35 to 44	45 to 54	55 to 64	65 and Over	Not Stated	Total
Licensed Drivers	73	1,116	2,042	6,097	6,070	3,708	1,290	454	0	20,850
Drivers in Collisions	20	74	84	226	219	122	42	20	64	871

**Drivers in Collisions and Relative Risk by Driver Age**



**Collision Rates (Collisions Per 1,000 Licensed Drivers) by Severity and Driver Age**

Figure 5.2

	15 to 19	20 to 24	25 to 34	35 to 44	45 to 54	55 to 64	65 and Over	Average Rate
Property Damage	54.7	26.4	26.7	26.7	24.8	20.9	35.2	30.7
Personal Injury & Fatal	24.4	14.7	10.3	9.4	8.1	11.6	8.8	11.0
<b>Total</b>	<b>79.1</b>	<b>41.1</b>	<b>37.1</b>	<b>36.1</b>	<b>32.9</b>	<b>32.6</b>	<b>44.1</b>	<b>41.8</b>
<b>Relative Risk*</b>	<b>1.9</b>	<b>1.0</b>	<b>0.9</b>	<b>0.9</b>	<b>0.8</b>	<b>0.8</b>	<b>1.1</b>	<b>1.0</b>

\* Relative Risk = (% of drivers in collisions in age group)/(% of total licence holders in age group)

The age of drivers involved in traffic collisions can form the basis of various analysis and countermeasure programs. The reason for this interest is the over-involvement of young drivers in collisions and the disproportionately large number of charges laid as a result of collisions.

Figure 5.1 shows that the relative risk of drivers between the ages of 15 and 19 are 1.9 times more likely to be involved in a collision than the average driving population. On average, 8% of 15 to 19 year olds were involved in collisions, compared to 4% of 35 to 44 year olds.

Other factors such as exposure, risk, experience, alcohol, and vehicle type must be known to fully understand the relationship of driver age and collision involvement. Studies indicate that the risk of having a collision is a factor of driving experience, not just driver age.

Number of Drivers Involved in Collisions by Licence Class and Age

Figure 5.3

Age Group	Class 1	Class 2	Class 3	Class 4	Class 5	Class 6	Class 7	Req'd. Licence	Not Stated	Total
Under 16	0	0	0	0	2	0	3	12	2	20
16	0	0	0	0	15	0	1	1	0	18
17	0	0	0	0	17	0	1	0	1	19
18	0	0	0	0	12	0	1	0	1	14
19	0	0	0	1	20	0	0	2	0	23
20	0	0	0	1	11	0	0	4	1	17
21-24	6	0	0	0	53	0	1	1	5	67
25-34	10	1	5	18	161	0	5	7	15	226
35-44	23	8	5	22	144	2	0	4	4	219
45-54	24	5	3	9	72	0	0	2	3	122
55-64	1	0	3	4	31	0	0	1	2	42
65 and over	1	0	1	1	15	0	1	0	0	20
Not Stated	0	0	0	0	3	0	0	1	2	59
Drivers in Collisions	65	14	17	56	556	2	13	34	35	872
Total Licensed Drivers	1,089	196	630	888	16,794	5	1,248	N/A	N/A	20,850
Relative Risk*	1.43	1.71	0.65	1.51	0.79	9.56	0.25	N/A	N/A	1.00

\* Relative Risk = (% of Total Collisions in Class)/(% of Total Licence Holders in Class)

Number of Drivers Involved in Collisions by Condition and Age

Figure 5.4

Driver Condition	< 16	16	17	18	19	20	21-24	25-34	35-44	45-54	55-64	65+	Not Stated	Total	%
Apparently Normal	15	15	16	13	21	13	52	183	193	115	36	15	5	692	79.4
Fatigued, Fell Asleep	0	0	0	0	0	0	0	2	1	1	1	0	0	5	0.6
Inexperience	0	0	0	0	0	0	0	0	0	0	0	0	0	0	0.0
Under Influence - Alcohol	1	2	0	1	2	4	10	25	13	3	3	1	0	65	7.5
Under Influence - Drugs	0	0	0	0	0	0	0	1	1	0	0	0	0	2	0.2
Sudden Illness, Lost Consciousness	1	0	0	0	0	0	0	1	0	0	0	2	0	4	0.5
Other Condition	1	0	0	0	0	0	0	1	0	0	0	0	0	2	0.2
Unknown	2	1	3	0	0	0	5	13	11	3	2	2	59	101	11.6
Total	20	18	19	14	23	17	67	226	219	122	42	20	64	871	
%	2.3	2.1	2.2	1.6	2.6	2.0	7.7	25.9	25.1	14.0	4.8	2.3	7.3		100.0

Number of Drivers Involved in Collisions by Driver Action and Age

Figure 5.5

Driver Action	<16	16	17	18	19	20	21-24	25-34	35-44	45-54	55-64	65+	Not Stated	Total	%
Driving Properly	4	2	4	7	3	5	22	78	76	54	13	5	2	275	31.6
Following Too Closely	0	1	1	5	1	1	2	14	12	9	2	3	0	51	5.9
<u>Distracted, Inattentive</u>	0	0	0	0	0	0	0	0	0	0	0	0	0	0	0.0
Driving Too Fast	1	0	0	0	4	4	3	16	9	5	2	0	0	44	5.1
Improper Turning or Passing	0	0	1	0	2	0	1	5	6	3	1	0	0	19	2.2
<u>Failing to Yield Right of Way</u>	5	3	3	0	2	0	8	18	28	8	6	5	1	87	10.0
Disobeying Traffic Control/Officer	0	0	0	0	0	0	0	1	0	2	0	1	0	4	0.5
Driving on Wrong Side of Road	1	1	0	0	0	0	1	0	7	2	0	1	1	14	1.6
<u>Driving in Wrong Direction</u>	0	0	0	0	0	0	0	0	0	0	0	0	0	0	0.0
Backing Unsafely	1	1	4	0	2	1	7	29	27	13	6	3	6	100	11.5
Lost Control	3	9	6	2	8	4	14	49	46	21	10	2	2	176	20.2
Other Driver Action	4	1	0	0	1	2	6	10	6	5	1	0	0	36	4.1
Unknown	1	0	0	0	0	0	3	6	2	0	1	0	52	65	7.5
<b>Total</b>	<b>20</b>	<b>18</b>	<b>19</b>	<b>14</b>	<b>23</b>	<b>17</b>	<b>67</b>	<b>226</b>	<b>219</b>	<b>122</b>	<b>42</b>	<b>20</b>	<b>64</b>	<b>871</b>	
<b>%</b>	<b>2.3</b>	<b>2.1</b>	<b>2.2</b>	<b>1.6</b>	<b>2.6</b>	<b>2.0</b>	<b>7.7</b>	<b>25.9</b>	<b>25.1</b>	<b>14.0</b>	<b>4.8</b>	<b>2.3</b>	<b>7.3</b>		<b>100.0</b>

## Number of Vehicles in Collisions by Vehicle Type and Severity

Figure 6.1

Vehicle Type	Property Damage	Personal Injury	Fatal	Total	%
Passenger Car	243	75	1	319	31.5
Passenger Van	92	19	1	112	11.1
Light Utility Vehicle	0	0	0	0	0.0
Pickup Truck	352	90	1	443	43.8
Panel/Cargo Van	0	0	0	0	0.0
Other Truck/Van <= 4536 kg	0	0	0	0	0.0
Unit Truck > 4536 kg	10	2	0	12	1.2
Road Tractor	23	7	3	33	3.3
School Bus	1	2	0	3	0.3
Small School Bus	0	0	0	0	0.0
Urban Transit Bus	0	0	0	0	0.0
Intercity Bus	0	0	0	0	0.0
Bus - Unspecified	0	0	0	0	0.0
Motorcycle	0	1	0	1	0.1
Limited Speed Motorcycle	0	0	0	0	0.0
Off Road Vehicles (ATV)	1	2	0	3	0.3
Bicycle	1	8	1	10	1.0
Motor Home	0	0	0	0	0.0
Farm Equipment	0	0	0	0	0.0
Construction Equipment	3	1	0	4	0.4
Fire Engine	0	0	0	0	0.0
Snowmobile	3	20	2	25	2.5
Streetcar	0	0	0	0	0.0
Other	0	0	0	0	0.0
Unknown	47	0	0	47	4.6
<b>Total</b>	<b>776</b>	<b>227</b>	<b>9</b>	<b>1012</b>	<b>100.0</b>

## Number of Vehicles in Collisions by Vehicle Condition and Severity

Figure 6.2

Vehicle Condition	Property Damage	Personal Injury	Fatal	Total	%
No Apparent Defect	659	207	5	871	86.1
Defective Brakes	1	1	0	2	0.2
Defective Steering	0	2	0	2	0.2
Defective Lighting	1	1	0	2	0.2
Tire Blown Out	7	2	0	9	0.9
Unsecured Load, Spilled Load	0	0	0	0	0.0
Oversized Load, Overload	2	0	0	2	0.2
Visibility Obstructed	8	2	0	10	1.0
Other Defective Vehicular Parts	15	5	0	20	2.0
Other Vehicular Factor	0	0	0	0	0.0
Unknown	83	7	4	94	9.3
<b>Total</b>	<b>776</b>	<b>227</b>	<b>9</b>	<b>1012</b>	<b>100.0</b>



## Number of Vehicles in Collisions by Vehicle Manoeuvre and Severity

Figure 6.3

<b>Vehicle Manoeuvre</b>	<b>Property Damage</b>	<b>Personal Injury</b>	<b>Fatal</b>	<b>Total</b>	<b>%</b>
Going Straight Ahead	309	167	8	484	47.8
Turning Left	55	13	1	69	6.8
Turning Right	29	8	0	37	3.7
Making U-Turn	7	1	0	8	0.8
Changing Lanes	6	0	0	6	0.6
Merging	1	1	0	2	0.2
Reversing	105	5	0	110	10.9
Overtaking	6	1	0	7	0.7
Negotiating Curve	0	0	0	0	0.0
Slowing or Stopped in Traffic	56	19	0	75	7.4
Starting in Traffic	2	1	0	3	0.3
Leaving Roadside	2	0	0	2	0.2
Stopped/Parked Legally	133	6	0	139	13.7
Stopped/Parked Illegally	5	0	0	5	0.5
Swerving to Avoid Collision	4	5	0	9	0.9
Run-away or Roll-away Vehicle	7	0	0	7	0.7
Unspecified Manoeuvre	0	0	0	0	0.0
Other	0	0	0	0	0.0
Unknown	49	0	0	49	4.8
<b>Total</b>	<b>776</b>	<b>227</b>	<b>9</b>	<b>1012</b>	<b>100.0</b>

## Number of Vehicles in Collisions by Vehicle Year and Severity

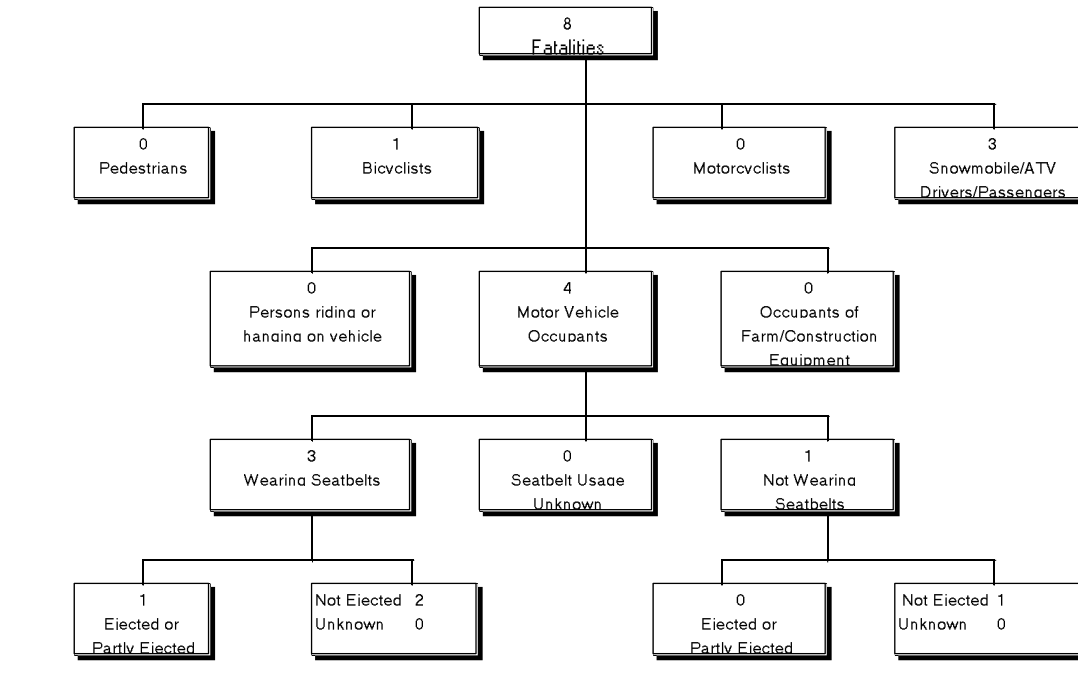
Figure 6.4

<b>Model Year</b>	<b>Property Damage</b>	<b>Personal Injury</b>	<b>Fatal</b>	<b>Total</b>	<b>%</b>
1998	9	4	0	13	1.3
1997	57	18	1	76	7.5
1996	64	20	4	88	8.7
1995	67	19	0	86	8.5
1994	66	13	1	80	7.9
1993	49	19	0	68	6.7
1992	41	12	0	53	5.2
1991	53	11	0	64	6.3
1990	60	9	1	70	6.9
1989	55	17	0	72	7.1
1988	49	14	0	63	6.2
1987	18	4	0	22	2.2
1986 & Older	130	53	0	183	18.1
Unspecified	58	14	2	74	7.3
<b>Total</b>	<b>776</b>	<b>227</b>	<b>9</b>	<b>1012</b>	<b>100.0</b>

## Victims and Occupant Restraints – Section 7

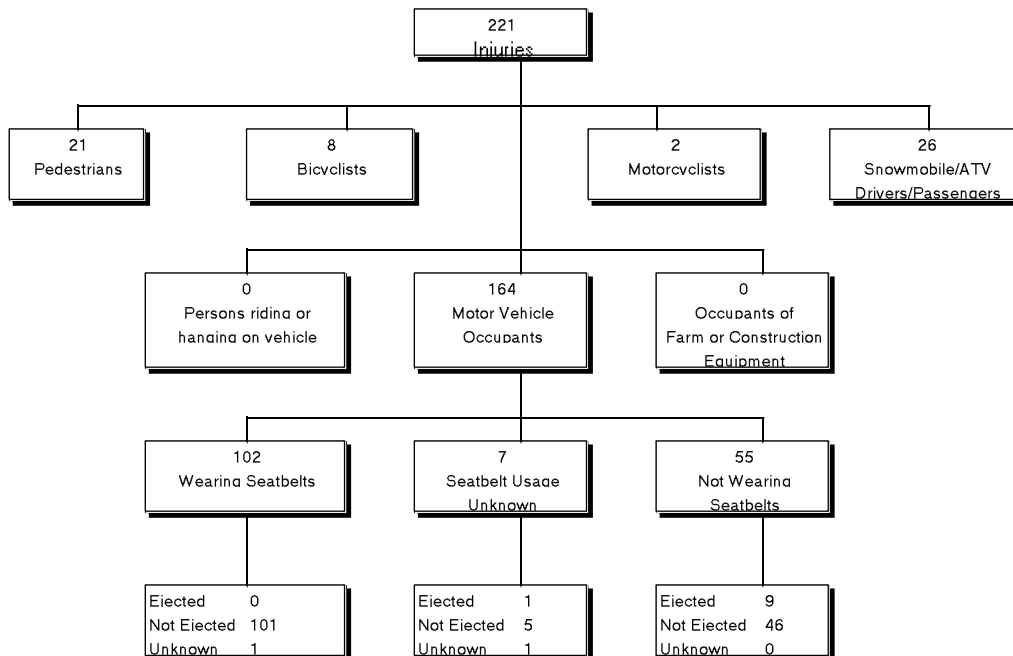
**Fatalities Classification**  
(January 1 to December 31, 1997)

Figure 7.1



**Injuries Classification**  
(January 1 to December 31, 1997)

Figure 7.2



## Victims and Occupant Restraints – Section 7

Persons Injured by Road User Class and Age Group

Figure 7.3

Road User Class	0 to 4	5 to 14	15 to 19	20 to 24	25 to 34	35 to 44	45 to 54	55 to 64	65 & older	Not Stated	Total	%
Motor Vehicle Driver	0	0	8	14	33	23	12	9	2	0	101	45.7
Motor Vehicle Passenger	2	9	14	7	11	7	3	3	1	6	63	28.5
Pedestrian	1	6	2	1	5	2	2	0	1	1	21	9.5
Bicyclist	1	6	0	0	0	0	0	0	0	1	8	3.6
Motorcyclist (includes passengers)	0	0	0	0	0	2	0	0	0	0	2	0.9
ATV Operators & Passengers	0	0	0	1	1	0	0	0	0	0	2	0.9
Snowmobile Operators & Passengers	1	7	3	3	7	2	1	0	0	0	24	10.9
Farm/Construction Equipment	0	0	0	0	0	0	0	0	0	0	0	0.0
Other	0	0	0	0	0	0	0	0	0	0	0	0.0
Unspecified	0	0	0	0	0	0	0	0	0	0	0	0.0
<b>Total</b>	<b>5</b>	<b>28</b>	<b>27</b>	<b>26</b>	<b>57</b>	<b>36</b>	<b>18</b>	<b>12</b>	<b>4</b>	<b>8</b>	<b>221</b>	<b>100.0</b>

Persons Killed by Road User Class and Age Group

Figure 7.4

Road User Class	0 to 4	5 to 14	15 to 19	20 to 24	25 to 34	35 to 44	45 to 54	55 to 64	65 & older	Not Stated	Total	%
Motor Vehicle Driver	0	0	0	1	1	0	0	1	0	0	3	37.5
Motor Vehicle Passenger	0	0	0	0	1	0	0	0	0	0	1	12.5
Pedestrian	0	0	0	0	0	0	0	0	0	0	0	0.0
Bicyclist	0	1	0	0	0	0	0	0	0	0	1	12.5
Motorcyclist (includes passengers)	0	0	0	0	0	0	0	0	0	0	0	0.0
ATV Operators & Passengers	0	0	0	0	0	0	0	0	0	0	0	0.0
Snowmobile Operators & Passengers	0	1	0	0	0	1	1	0	0	0	3	37.5
Farm/Construction Equipment	0	0	0	0	0	0	0	0	0	0	0	0.0
Other	0	0	0	0	0	0	0	0	0	0	0	0.0
Unspecified	0	0	0	0	0	0	0	0	0	0	0	0.0
<b>Total</b>	<b>0</b>	<b>2</b>	<b>0</b>	<b>1</b>	<b>2</b>	<b>1</b>	<b>1</b>	<b>1</b>	<b>0</b>	<b>0</b>	<b>8</b>	<b>100.0</b>

Persons Injured or Killed by Road User Class and Gender

Figure 7.5

Road User Class	Persons Injured				Person Killed			
	Male	Female	Unknown	Total	Male	Female	Unknown	Total
Motor Vehicle Driver	51	50	0	101	3	0	0	3
Motor Vehicle Passenger	32	29	2	63	0	1	0	1
Pedestrian	9	12	0	21	0	0	0	0
Bicyclist	5	3	0	8	1	0	0	1
Motorcyclist (includes passengers)	1	1	0	2	0	0	0	0
ATV Operators & Passengers	2	0	0	2	0	0	0	0
Snowmobile Operators & Passengers	14	10	0	24	2	1	0	3
Farm/Construction Equipment	0	0	0	0	0	0	0	0
Other	0	0	0	0	0	0	0	0
Unspecified	0	0	0	0	0	0	0	0
<b>Total</b>	<b>114</b>	<b>105</b>	<b>2</b>	<b>221</b>	<b>6</b>	<b>2</b>	<b>0</b>	<b>8</b>

## Victims and Occupant Restraints – Section 7

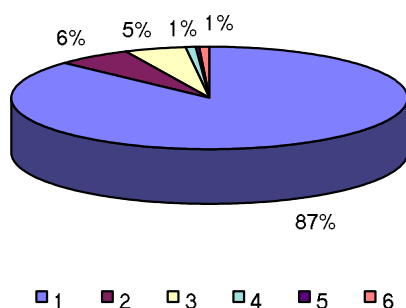
### Motor Vehicle\* Occupants by Injury Severity and Restraint Use

Figure 7.6

<b>Injury Severity</b>	<b>Not Restrained</b>	<b>Lap Belt Only</b>	<b>Lap &amp; Torso Belt</b>	<b>Child Restraint Device</b>	<b>Restraint Use Unknown</b>	<b>Total</b>	<b>%</b>
Not Injured	139	69	638	0	276	1122	87.0
Minimal Injuries	22	4	45	0	4	75	5.8
Minor Injuries	28	2	38	0	1	69	5.3
Major (Hospital Admission)	5	1	6	0	2	14	1.1
Fatal	1	0	3	0	0	4	0.3
Injured - Extent Unknown	0	1	5	0	0	6	0.5
<b>Total</b>	<b>195</b>	<b>77</b>	<b>735</b>	<b>0</b>	<b>283</b>	<b>1290</b>	<b>100.0</b>

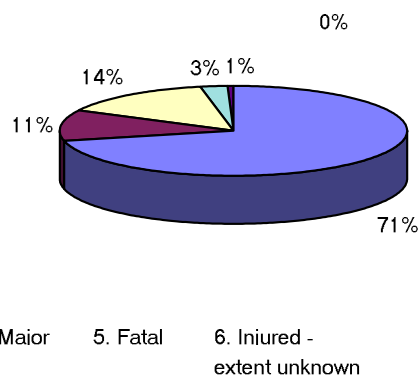
\* Excludes occupants of motorcycles, mopeds, snowmobiles, all-terrain vehicles, and farm/construction equipment

**Restraints Used**



**Restraints Not Used**

Figure 7.7



Note: The totals used to calculate the percentages in Figures 7.2 and 7.3 do not include occupants where seat belt use was as "unknown".

## Victims and Occupant Restraints – Section 7

**Motor Vehicle\* Occupants by Injury Severity & Age Group**

Figure 7.8

**Restraints Used**

	0 to 4	5 to 14	15 to 19	20 to 24	25 to 34	35 to 44	45 to 54	55 to 64	65 & older	Not Stated	Total
<b>Injury Severity</b>											
Not Injured	13	24	82	58	159	153	97	22	16	83	707
Minimal Injuries	1	1	3	5	15	12	3	5	0	4	49
Minor Injuries	1	0	3	3	11	7	7	5	2	1	40
Major (Hospital Admission)	0	0	0	3	2	0	0	1	1	0	7
Fatal	0	0	0	1	2	0	0	0	0	0	3
Injured - Extent Unknown	0	0	1	1	2	1	1	0	0	0	6
<b>Total</b>	<b>15</b>	<b>25</b>	<b>89</b>	<b>71</b>	<b>191</b>	<b>173</b>	<b>108</b>	<b>33</b>	<b>19</b>	<b>88</b>	<b>812</b>

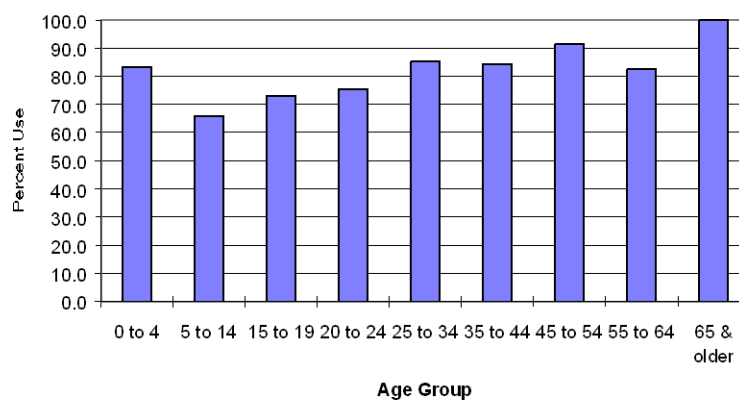
**Restraints Not Used**

	0 to 4	5 to 14	15 to 19	20 to 24	25 to 34	35 to 44	45 to 54	55 to 64	65 & older	Not Stated	Total
<b>Injury Severity</b>											
Not Injured	3	6	19	14	23	23	6	5	0	40	139
Minimal Injuries	0	4	5	3	4	3	1	1	0	1	22
Minor Injuries	0	3	7	6	6	4	2	0	0	0	28
Major (Hospital Admission)	0	0	2	0	0	2	1	0	0	0	5
Fatal	0	0	0	0	0	0	0	1	0	0	1
Injured - Extent Unknown	0	0	0	0	0	0	0	0	0	0	0
<b>Total</b>	<b>3</b>	<b>13</b>	<b>33</b>	<b>23</b>	<b>33</b>	<b>32</b>	<b>10</b>	<b>7</b>	<b>0</b>	<b>41</b>	<b>195</b>

\* Excludes occupants of motorcycles, mopeds, snowmobiles, all-terrain vehicles, and farm/construction equipment

**Victim Restraint Use Rate by Victim Age**

Figure 7.9



Pedestrians Injured or Killed by Age Group

Figure 8.1

	Age Group										Not Stated	Total	%
	0 to 4	5 to 14	15 to 19	20 to 24	25 to 34	35 to 44	45 to 54	55 to 64	65 & older				
Injured	1	6	2	1	5	2	2	0	1	1	21	100.0	
Killed	0	0	0	0	0	0	0	0	0	0	0	0.0	
Total	1	6	2	1	5	2	2	0	1	1	21		
%	4.8	28.6	9.5	4.8	23.8	9.5	9.5	0.0	4.8	4.8	100.0	100.0	

Pedestrians Injured or Killed by Pedestrian Action and Age Group

Figure 8.2

Pedestrian Action	Age Group										Not Stated	Total	%
	0 to 4	5 to 14	15 to 19	20 to 24	25 to 34	35 to 44	45 to 54	55 to 64	65 & older				
Crossing Intersection With Traffic Control, With Right-of-Way	0	0	0	0	0	2	0	0	0	0	0	2	9.5
Crossing Intersection With Traffic Control, Without Right-of-Way	0	1	0	1	1	0	0	0	0	0	0	3	14.3
Crossing Intersection - No Traffic Control	0	0	0	0	0	0	0	0	0	0	0	0	0.0
Crossing Roadway at Crosswalk	0	0	0	0	0	0	1	0	0	0	0	1	4.8
Crossing Roadway Not at Intersection	0	1	0	0	0	0	0	0	0	0	0	1	4.8
Walking Along Roadway Against Traffic	0	0	0	0	0	0	0	0	0	0	0	0	0.0
Walking Along Roadway With Traffic	0	1	0	0	2	0	0	0	0	0	0	3	14.3
On Sidewalk, Median, Safety Zone	0	2	1	0	0	0	0	0	0	1	0	4	19.0
Walking on Travelled Part of Roadway Against Traffic	0	0	0	0	0	0	0	0	0	0	0	0	0.0
Walking on Travelled Part of Roadway With Traffic	0	0	0	0	0	0	0	0	0	0	0	0	0.0
Coming from Behind Parked Vehicle/Object on Roadside	0	0	1	0	0	0	0	0	0	0	0	1	4.8
Coming from Behind Moving Vehicle	0	0	0	0	1	0	0	0	0	0	0	1	4.8
Running into Roadway	1	0	0	0	0	0	1	0	0	0	1	3	14.3
Getting On/Off School Bus	0	0	0	0	0	0	0	0	0	0	0	0	0.0
Getting On/Off Other Vehicles	0	1	0	0	0	0	0	0	0	0	0	1	4.8
Pushing Vehicle on Road	0	0	0	0	0	0	0	0	0	0	0	0	0.0
Working on Vehicle on Side of Road	0	0	0	0	0	0	0	0	0	0	0	0	0.0
Playing on Roadway	0	0	0	0	0	0	0	0	0	0	0	0	0.0
Working on Roadway	0	0	0	0	0	0	0	0	0	0	0	0	0.0
Living on Road	0	0	0	0	1	0	0	0	0	0	0	1	4.8
Other	0	0	0	0	0	0	0	0	0	0	0	0	0.0
Unknown	0	0	0	0	0	0	0	0	0	0	0	0	0.0
Total	1	6	2	1	5	2	2	0	1	1	1	21	100.0

Pedestrians Injured or Killed By Place of Occurrence and Injury Severity

Figure 8.3

Place of Occurrence	Killed	Injured	Total	%
Urban	0	21	21	100.0
Rural	0	0	0	0.0
Unspecified	0	0	0	0.0
Total	0	21	21	100.0

### Pedestrians Injured or Killed by Accident Site

Figure 8.4

Accident Site	Killed	Injured	Total	%
Non-Intersection	0	9	9	42.9
At Intersection of At Least Two Roadways	0	9	9	42.9
Intersection With Parking Lot/Driveway/Alley	0	3	3	14.3
Railroad Level Crossing	0	0	0	0.0
Bridge/Overpass/Viaduct	0	0	0	0.0
Tunnel or Underpass	0	0	0	0.0
Passing Lane/Climbing Lane	0	0	0	0.0
Other	0	0	0	0.0
Unspecified	0	0	0	0.0
<b>Total</b>	<b>0</b>	<b>21</b>	<b>21</b>	<b>100.0</b>

### Pedestrians Injured or Killed by Pedestrian Condition

Figure 8.5

Pedestrian Condition	Killed	Injured	Total	%
Apparently Normal	0	16	16	76.2
Fatigued, Fell Asleep	0	0	0	0.0
Inexperience	0	0	0	0.0
Under Influence - Alcohol	0	3	3	14.3
Under Influence - Drugs	0	0	0	0.0
Sudden Illness, Lost Consciousness	0	0	0	0.0
Other Condition	0	0	0	0.0
Unknown	0	2	2	9.5
<b>Total</b>	<b>0</b>	<b>21</b>	<b>21</b>	<b>100.0</b>

## Drinking Drivers in Collisions by Driver Age and Gender

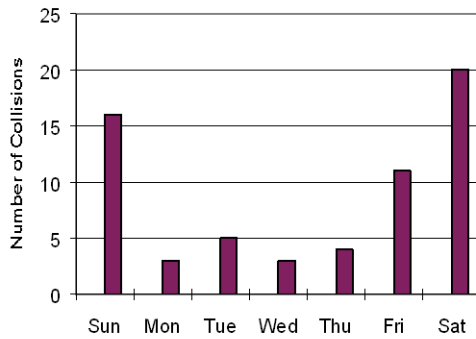
Figure 9.1

Driver Age	Male	Female	Not Stated	Total Drinking Drivers
Under 16	1	0	0	1
16	1	1	0	2
17	0	0	0	0
18	1	0	0	1
19	1	1	0	2
20	3	1	0	4
21 to 24	9	1	0	10
25 to 34	15	10	0	25
35 to 44	11	2	0	13
45 to 54	3	0	0	3
55 to 64	3	0	0	3
65 & Older	1	0	0	1
Not Stated	0	0	0	0
<b>Total</b>	<b>49</b>	<b>16</b>	<b>0</b>	<b>65</b>



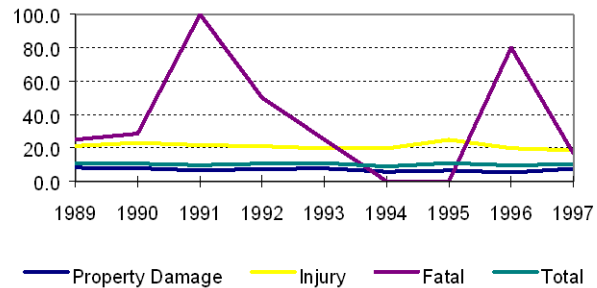
## Collisions Involving Alcohol by Day of Week

Figure 9.2



## Percentage of Collisions Involving Alcohol by Year and Severity

Figure 9.3



## Number of Collisions and Victims Involving Alcohol

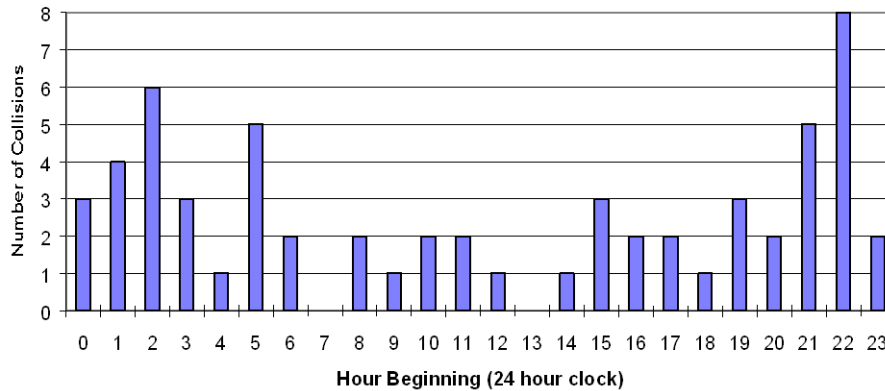
Figure 9.4

Year	Number of Collisions				% of Total Collisions	Number of Victims			
	Property Damage	Personal Injury	Fatal	Total		Injured	Killed	Total	% of Total Victims
1989	56	38	2	96	10.9	63	2	65	24.0
1990	53	32	2	87	10.6	45	2	47	22.6
1991	46	37	3	86	9.7	75	3	78	31.3
1992	50	38	3	91	10.5	59	3	62	23.3
1993	38	35	1	74	10.9	67	1	68	23.7
1994	32	34	0	66	8.9	51	0	51	20.9
1995	33	41	0	74	10.9	62	0	62	27.2
1996	25	28	8	61	9.6	50	8	58	26.7
1997	33	28	1	62	10.3	43	1	44	19.2
<b>Average</b>	<b>41</b>	<b>35</b>	<b>2</b>	<b>77</b>	<b>10</b>	<b>57</b>	<b>2</b>	<b>59</b>	<b>24.3</b>



Number of Alcohol Related Collisions by Time of Day

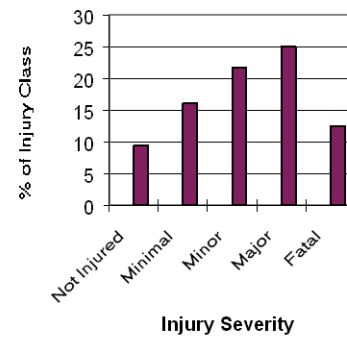
Figure 9.5



Injury Severity by Alcohol Involvement

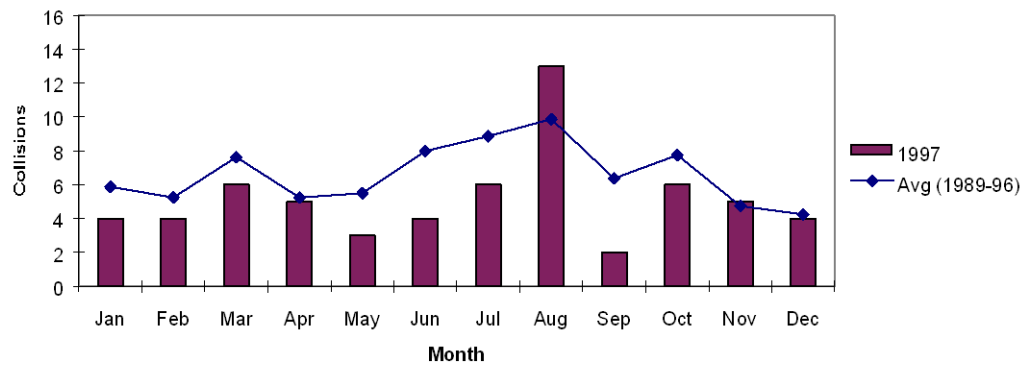
Figure 9.6

Injury Severity	Alcohol Involvement		Totals	% with Alcohol
	Yes	No		
Not Injured	107	1,033	1140	9.4
Minimal Injuries	16	83	99	16.2
Minor	20	72	92	21.7
Major	6	18	24	25.0
Fatal	1	7	8	12.5
Injured - Extent Unknown	1	5	6	16.7
<b>Total</b>	<b>151</b>	<b>1218</b>	<b>1369</b>	<b>11.0</b>



Alcohol-Involved Collisions by Month

Figure 9.7



Off-Road Vehicle Collisions by Month and Severity

Figure 10.1

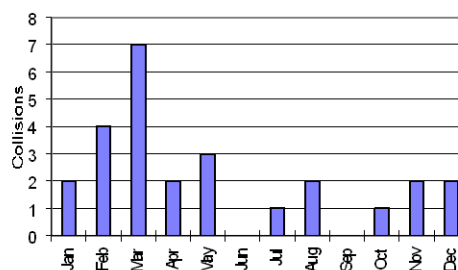
Month	Number of Collisions				Number of Victims	
	Property Damage	Personal Injury	Fatal	Total	Injured	Killed
January	1	1	0	2	1	0
February	1	3	0	4	5	0
March	1	5	1	7	13	2
April	0	2	0	2	2	0
May	0	2	1	3	2	1
June	0	0	0	0	0	0
July	1	0	0	1	0	0
August	1	1	0	2	1	0
September	0	0	0	0	0	0
October	0	1	0	1	1	0
November	0	2	0	2	3	0
December	0	2	0	2	2	0
<b>Total</b>	<b>5</b>	<b>19</b>	<b>2</b>	<b>26</b>	<b>30</b>	<b>3</b>

Off-Road Vehicle Collisions by Vehicle Type

Figure 10.2

	Snowmobile	ATV	Total
<b>Total Victims</b>	<b>27</b>	<b>2</b>	<b>29</b>
Killed	3	0	3
Injured	24	2	26
<b>Total Vehicles Involved</b>	<b>25</b>	<b>3</b>	<b>28</b>
Fatal	2	0	2
Injury	20	2	22
Property Damage	3	1	4

Off-Road Vehicle Collisions by Month



**Off-Road Vehicle Drivers in Collisions by Driver Age and Gender**

Figure 10.3

Age Group	Snowmobile			ATV			Total	%
	Male	Female	Unknown	Male	Female	Unknown		
0 to 4	0	0	0	0	0	0	0	0.0
5 to 14	1	2	0	0	0	0	3	11.1
15 to 19	2	1	0	1	0	0	4	14.8
20 to 24	5	0	0	1	0	0	6	22.2
25 to 34	6	1	0	1	0	0	8	29.6
35 to 44	4	0	0	0	0	0	4	14.8
45 to 54	1	1	0	0	0	0	2	7.4
55 to 64	0	0	0	0	0	0	0	0.0
65 & Over	0	0	0	0	0	0	0	0.0
Unknown	0	0	0	0	0	0	0	0.0
Total	19	5	0	3	0	0	27	100.0

**Off-Road Vehicle Drivers in Collisions by Driver Condition and Severity**

Figure 10.4

Driver Condition	Property Damage	Personal Injury	Fatal	Total	%
Apparently Normal	4	12	1	17	63.0
Fatigue/Fell Asleep	0	0	0	0	0.0
Inexperience	0	0	0	0	0.0
Under Influence - Alcohol	0	7	0	7	25.9
Under Influence - Drugs	0	0	0	0	0.0
Sudden Illness, Lost Consciousness	0	0	0	0	0.0
Other Condition	0	0	0	0	0.0
Unknown	0	2	1	3	11.1
Total	4	21	2	27	100.0

**Off-Road Vehicle Drivers in Collisions by Driver Action and Severity**

Figure 10.5

<b>Driver Action</b>	<b>Property Damage</b>	<b>Personal Injury</b>	<b>Fatal</b>	<b>Total</b>	<b>%</b>
Driving Properly	0	2	0	2	7.4
Following Too Closely	0	0	0	0	0.0
Distracted, Inattentive	0	0	0	0	0.0
Driving Too Fast for Conditions	1	5	0	6	22.2
Improper Turning or Passing	0	0	0	0	0.0
Failed to Yield Right-of-Way	1	2	1	4	14.8
Disobeyed Traffic Control or Officer	0	1	0	1	3.7
Driving on Wrong Side of Road	0	1	0	1	3.7
Driving in Wrong Direction	0	0	0	0	0.0
Backing Unsafely	0	0	0	0	0.0
Lost Control	2	6	1	9	33.3
Other	0	4	0	4	14.8
Unknown	0	0	0	0	0.0
<b>Total</b>	<b>4</b>	<b>21</b>	<b>2</b>	<b>27</b>	<b>100.0</b>

**Off-Road Vehicle Occupants by Injury Severity and Helmet Use**

Figure 10.6

<b>Injury Severity</b>	<b>Helmet Worn</b>	<b>Helmet Not Worn</b>	<b>Unknown</b>	<b>Total</b>	<b>%</b>
Not Injured	5	9	0	14	32.6
Minimal Injuries	4	9	1	14	32.6
Minor Injuries	0	7	0	7	16.3
Major (Hospital Admission)	0	5	0	5	11.6
Fatal	0	3	0	3	7.0
Injured - Extent Unknown	0	0	0	0	0.0
<b>Total</b>	<b>9</b>	<b>33</b>	<b>1</b>	<b>43</b>	<b>100.0</b>

## Collisions by Region, RCMP Detachment and Severity

Figure 11.1

### A - Inuvik Region

RCMP Detachment	Number of Collisions				Number of Victims	
	Property Damage	Personal Injury	Fatal	Total	Injured	Killed
Aklavik	0	4	0	4	8	0
Deline	0	0	0	0	0	0
Fort Good Hope	2	3	1	6	5	1
Fort McPherson	3	5	1	9	15	1
Holman	0	0	0	0	0	0
Inuvik	42	14	0	56	15	0
Norman Wells	5	2	0	7	3	0
Sachs Harbour	0	0	0	0	0	0
Tuktoyaktuk	3	2	0	5	2	0
Tulita	0	2	0	2	3	0
<b>Sub Total</b>						
<b>Inuvik Region</b>	<b>55</b>	<b>32</b>	<b>2</b>	<b>89</b>	<b>51</b>	<b>2</b>

### B - Fort Simpson Region

RCMP Detachment	Number of Collisions				Number of Victims	
	Property Damage	Personal Injury	Fatal	Total	Injured	Killed
Fort Liard	5	2	1	8	4	1
Fort Simpson	20	6	0	26	8	0
<b>Sub Total</b>						
<b>Fort Simpson Region</b>	<b>25</b>	<b>8</b>	<b>1</b>	<b>34</b>	<b>12</b>	<b>1</b>

### C - South Slave Region

RCMP Detachment	Number of Collisions				Number of Victims	
	Property Damage	Personal Injury	Fatal	Total	Injured	Killed
Hay River	42	26	3	71	37	5
Fort Providence	11	4	0	15	7	0
Fort Resolution	5	1	0	6	1	0
Fort Smith	27	13	0	40	18	0
Lutsel K'e	1	1	0	2	1	0
<b>Sub Total</b>						
<b>South Slave Region</b>	<b>86</b>	<b>45</b>	<b>3</b>	<b>134</b>	<b>64</b>	<b>5</b>

### D - North Slave Region

RCMP Detachment	Number of Collisions				Number of Victims	
	Property Damage	Personal Injury	Fatal	Total	Injured	Killed
Rae/Wha Ti	24	10	0	34	12	0
Yellowknife	253	56	0	309	82	0
<b>Sub Total</b>						
<b>North Slave Region</b>	<b>277</b>	<b>66</b>	<b>0</b>	<b>343</b>	<b>94</b>	<b>0</b>

<b>Total - All Regions</b>	<b>443</b>	<b>151</b>	<b>6</b>	<b>600</b>	<b>221</b>	<b>8</b>
--------------------------------	------------	------------	----------	------------	------------	----------

## Collision Rates by Region and RCMP Detachment

Figure 11.2

### A - Inuvik Region

RCMP Detachment	Number of Collisions	Licensed Drivers [1]	Registered Vehicles [1]	Population (1997 estimate [2])	Collision Rates		
					Collisions/ 100 Licensed Drivers	Collisions/ 100 Registered Vehicles	Collisions/ 100 Population
Aklavik	4	157	80	748	2.55	5.00	0.53
Deline	0	96	47	633	0.00	0.00	0.00
Fort Good Hope	6	167	91	780	3.59	6.59	0.77
Fort McPherson	9	220	223	1,123	4.09	4.04	0.80
Ulukhaktok	0	45	98	447	0.00	0.00	0.00
Inuvik	56	1,598	1,477	3,338	3.50	3.79	1.68
Norman Wells	7	479	667	764	1.46	1.05	0.92
Sachs Harbour	0	32	30	164	0.00	0.00	0.00
Tuktoyaktuk	5	285	208	1,263	1.75	2.40	0.40
Tulita	2	57	43	474	3.51	4.65	0.42
<b>Sub Total</b>							
<b>Inuvik Region</b>	<b>89</b>	<b>3,136</b>	<b>2,964</b>	<b>9,734</b>	<b>2.84</b>	<b>3.00</b>	<b>0.91</b>

### B - Fort Simpson Region

RCMP Detachment	Number of Collisions	Licensed Drivers [1]	Registered Vehicles [1]	Population (1997 estimate [2])	Collision Rates		
					Collisions/ 100 Licensed Drivers	Collisions/ 100 Registered Vehicles	Collisions/ 100 Population
Fort Liard	8	147	140	519	5.44	5.71	1.54
Fort Simpson	26	720	883	1,718	3.61	2.94	1.51
<b>Sub Total</b>							
<b>Fort Simpson Region</b>	<b>34</b>	<b>867</b>	<b>1,023</b>	<b>2,237</b>	<b>3.92</b>	<b>3.32</b>	<b>1.52</b>

### C - South Slave Region

RCMP Detachment	Number of Collisions	Licensed Drivers [1]	Registered Vehicles [1]	Population (1997 estimate [2])	Collision Rates		
					Collisions/ 100 Licensed Drivers	Collisions/ 100 Registered Vehicles	Collisions/ 100 Population
Hay River	71	2,468	3,360	4,067	2.88	2.11	1.75
Fort Providence	15	238	308	863	6.30	4.87	1.74
Fort Resolution	6	214	217	575	2.80	2.76	1.04
Fort Smith	40	1,427	1,486	2,673	2.80	2.69	1.50
Lutsel K'e	2	72	32	345	2.78	6.25	0.58
<b>Sub Total</b>							
<b>South Slave Region</b>	<b>134</b>	<b>4,419</b>	<b>5,403</b>	<b>8,523</b>	<b>3.03</b>	<b>2.48</b>	<b>1.57</b>

### D - North Slave Region

RCMP Detachment	Number of Collisions	Licensed Drivers [1]	Registered Vehicles [1]	Population (1997 estimate [2])	Collision Rates		
					Collisions/ 100 Licensed Drivers	Collisions/ 100 Registered Vehicles	Collisions/ 100 Population
Behchoko/Whati	34	602	573	2,649	5.65	5.93	1.28
Yellowknife	309	11,826	11,993	18,367	2.61	2.58	1.68
<b>Sub Total</b>							
<b>North Slave Region</b>	<b>343</b>	<b>12,428</b>	<b>12,566</b>	<b>21,016</b>	<b>2.76</b>	<b>2.73</b>	<b>1.63</b>

<b>Total - All Regions</b>	<b>600</b>	<b>20,850</b>	<b>21,956</b>	<b>41,800</b>	<b>2.88</b>	<b>2.73</b>	<b>1.44</b>
----------------------------	------------	---------------	---------------	---------------	-------------	-------------	-------------

[1] Number of registered vehicles and licensed drivers are as of December 31, 1997.

[2] 1997 population from NWT Bureau of Statistics July 1 estimate published in 'Quarterly Report', March 1998.

## Geographic Distribution – Section 11

Collisions on the NWT Highway System

Figure 11.3

Highway #1 (Mackenzie)	On Km	Collision Date	Collision Severity	Collision Configuration	#Persons Injured	#Persons Killed
	8.0	21-Mar-1997	Fatal	Other Multi-Vehicle Collision	0	2
	25.0	5-Aug-1997	Injury	Single Vehicle Rollover	1	0
	25.0	7-Aug-1997	Injury	Single Vehicle Rollover	2	0
	51.0	26-Mar-1997	Property Damage	Single Vehicle Rollover	0	0
	71.0	1-Jun-1997	Injury	Single Vehicle Rollover	1	0
	83.0	15-Oct-1997	Injury	Single Vehicle Rollover	1	0
	93.0	6-Feb-1997	Injury	Single Vehicle Rollover	1	0
	130.0	26-Mar-1997	Fatal	Other Multi-Vehicle Collision	0	2
	176.0	4-Apr-1997	Property Damage	Single Vehicle Rollover	0	0
	277.0	12-Jun-1997	Injury	Single Vehicle Rollover	2	0
	287.0	2-Apr-1997	Property Damage	Collision with Fixed Object	0	0
	341.0	9-May-1997	Injury	Single Vehicle Rollover	1	0
	368.0	21-Feb-1997	Property Damage	Head-on	0	0
	371.0	29-Jul-1997	Property Damage	Rear End	0	0
	372.0	10-Aug-1997	Property Damage	Single Vehicle Rollover	0	0
	396.0	18-Oct-1997	Property Damage	Single Vehicle Rollover	0	0
	429.0	14-Sep-1997	Injury	Single Vehicle Rollover	3	0
	438.0	2-Jul-1997	Property Damage	Collision with Fixed Object	0	0
	457.0	11-Oct-1997	Property Damage	Collision with Fixed Object	0	0
	457.0	29-Oct-1997	Property Damage	Sideswipe - Opposite Direction	0	0
	461.0	27-Nov-1997	Injury	Single Vehicle Rollover	1	0
	471.0	28-Mar-1997	Property Damage	Collision with Fixed Object	0	0
	552.0	16-Aug-1997	Injury	Single Vehicle Rollover	1	0
Summary Highway #1	Property Damage Collisions	Personal Injury Collisions	Fatal Collisions	Total Collisions	Persons Injured	Persons Killed
	11	10	2	23	14	4
Highway #2 (Hay River)	On Km	Collision Date	Collision Severity	Collision Configuration	#Persons Injured	#Persons Killed
	5.0	14-Aug-1997	Injury	Single Vehicle Rollover	1	0
	33.0	7-Feb-1997	Injury	Single Vehicle Rollover	1	0
	37.0	1-Jul-1997	Injury	Right Angle	2	0
	38.0	4-Aug-1997	Injury	Collision with Pedestrian	1	0
	38.0	10-Aug-1997	Property Damage	Right Angle	0	0
	38.0	14-Nov-1997	Property Damage	Collision with Fixed Object	0	0
	38.3	24-Aug-1997	Property Damage	Right Angle	0	0
	38.3	2-Dec-1997	Injury	Sideswipe - Opposite Direction	4	0
	38.8	3-Sep-1997	Injury	Left Turn Across Path	2	0
	40.0	20-Jan-1997	Injury	Other Multi-Vehicle Collision	3	0
	40.0	4-Oct-1997	Injury	Single Vehicle Rollover	1	0
	42.0	16-Jan-1997	Injury	Single Vehicle Rollover	1	0
	42.0	14-Apr-1997	Injury	Single Vehicle Rollover	1	0
	42.0	30-Jun-1997	Fatal	Collision with Fixed Object	0	1
	42.0	18-Oct-1997	Property Damage	Other Multi-Vehicle Collision	0	0
	44.6	19-Apr-1997	Injury	Other Multi-Vehicle Collision	1	0
Summary Highway #2	Property Damage Collisions	Personal Injury Collisions	Fatal Collisions	Total Collisions	Persons Injured	Persons Killed
	4	11	1	16	18	1

## Geographic Distribution – Section 11

Highway #3 (Yellowknife)	On Km	Collision Date	Collision Severity	Collision Configuration	#Persons Injured	#Persons Killed
	33.0	28-Sep-1997	Property Damage	Animal Strike	0	0
	46.0	29-Oct-1997	Property Damage	Animal Strike	0	0
	75.0	24-Dec-1997	Property Damage	Sideswipe - Opposite Direction	0	0
	82.0	12-Feb-1997	Injury	Sideswipe - Opposite Direction	1	0
	131.0	24-Oct-1997	Property Damage	Animal Strike	0	0
	132.0	30-Aug-1997	Property Damage	Animal Strike	0	0
	147.0	16-Mar-1997	Injury	Animal Strike	1	0
	148.0	16-Jul-1997	Property Damage	Other Multi-Vehicle Collision	0	0
	227.0	13-Feb-1997	Property Damage	Single Vehicle Rollover	0	0
	227.0	7-Jul-1997	Property Damage	Ran Off Road	0	0
	243.0	10-Jan-1997	Injury	Head-on	1	0
	243.0	11-Oct-1997	Injury	Other Multi-Vehicle Collision	2	0
	246.0	13-Apr-1997	Injury	Single Vehicle Rollover	1	0
	252.0	20-Jul-1997	Property Damage	Ran Off Road	0	0
	255.0	2-Jan-1997	Property Damage	Ran Off Road	0	0
	255.0	7-Sep-1997	Property Damage	Ran Off Road	0	0
	265.0	12-Oct-1997	Injury	Ran Off Road	2	0
	279.0	2-Nov-1997	Property Damage	Collision with Fixed Object	0	0
	280.0	20-Apr-1997	Injury	Single Vehicle Rollover	1	0
	285.0	6-Dec-1997	Injury	Collision with Fixed Object	1	0
	287.0	6-Dec-1997	Property Damage	Collision with Fixed Object	0	0
	288.0	7-Jun-1997	Property Damage	Sideswipe - Opposite Direction	0	0
	289.0	5-Feb-1997	Property Damage	Single Vehicle Rollover	0	0
	295.0	24-Jan-1997	Injury	Single Vehicle Rollover	1	0
	299.0	24-Oct-1997	Property Damage	Ran Off Road	0	0
	309.0	14-Feb-1997	Property Damage	Other Multi-Vehicle Collision	0	0
	310.0	27-Dec-1997	Property Damage	Collision with Fixed Object	0	0
	317.0	17-Jun-1997	Property Damage	Ran Off Road	0	0
	318.0	16-May-1997	Property Damage	Animal Strike	0	0
	319.0	26-Oct-1997	Injury	Ran Off Road	1	0
	326.0	21-Mar-1997	Injury	Rear End	2	0
	326.0	21-Mar-1997	Property Damage	Single Vehicle Rollover	0	0
	329.0	27-Jul-1997	Injury	Collision with Fixed Object	2	0
	333.0	14-Apr-1997	Property Damage	Ran Off Road	0	0
	335.7	24-Feb-1997	Property Damage	Right Angle	0	0
	336.7	17-Feb-1997	Property Damage	Other Multi-Vehicle Collision	0	0
	338.8	29-Jul-1997	Property Damage	Other Multi-Vehicle Collision	0	0
	338.8	1-Nov-1997	Property Damage	Collision with Fixed Object	0	0
Summary Highway #3	Property Damage Collisions	Personal Injury Collisions	Fatal Collisions	Total Collisions	Persons Injured	Persons Killed
	26	12	0	38	16	0



## Geographic Distribution – Section 11

Highway #4 (Ingraham Trail)	On Km	Collision Date	Collision Severity	Collision Configuration	#Persons Injured	#Persons Killed
	1.0	5-Feb-1997	Injury	Other Multi-Vehicle Collision	1	0
	2.0	25-Jun-1997	Property Damage	Ran Off Road	0	0
	5.0	24-Mar-1997	Property Damage	Ran Off Road	0	0
	7.0	16-May-1997	Property Damage	Single Vehicle Rollover	0	0
	7.0	19-Oct-1997	Injury	Ran Off Road	1	0
	12.0	27-Sep-1997	Property Damage	Single Vehicle Rollover	0	0
	16.0	8-Mar-1997	Injury	Head-on	2	0
	16.8	22-Feb-1997	Property Damage	Right Angle	0	0
	18.0	31-Mar-1997	Injury	Rear End	3	0
	20.0	13-Dec-1997	Property Damage	Ran Off Road	0	0
	34.0	3-Aug-1997	Injury	Single Vehicle Rollover	6	0
	36.0	5-Aug-1997	Injury	Ran Off Road	2	0
	44.0	4-Aug-1997	Injury	Single Vehicle Rollover	1	0
	46.0	2-Aug-1997	Property Damage	Sideswipe - Opposite Direction	0	0
Summary Highway #4	Property Damage Collisions	Personal Injury Collisions	Fatal Collisions	Total Collisions	Persons Injured	Persons Killed
	7	7	0	14	16	0
Highway #5 (Fort Smith Highway)	On Km	Collision Date	Collision Severity	Collision Configuration	#Persons Injured	#Persons Killed
	14.0	12-Oct-1997	Property Damage	Ran Off Road	0	0
	24.0	16-Oct-1997	Property Damage	Single Vehicle Rollover	0	0
	58.0	9-Jul-1997	Property Damage	Collision with Fixed Object	0	0
	61.0	21-Jan-1997	Property Damage	Passing - Left Turn	0	0
	82.0	14-Aug-1997	Property Damage	Animal Strike	0	0
	112.0	14-Oct-1997	Injury	Animal Strike	1	0
	144.0	19-Sep-1997	Property Damage	Single Vehicle Rollover	0	0
	146.0	2-Jan-1997	Property Damage	Animal Strike	0	0
	146.0	23-May-1997	Injury	Animal Strike	1	0
	164.0	22-Nov-1997	Property Damage	Single Vehicle Rollover	0	0
	186.0	3-Sep-1997	Property Damage	Single Vehicle Rollover	0	0
	206.0	21-May-1997	Injury	Single Vehicle Rollover	1	0
	206.0	25-Dec-1997	Injury	Single Vehicle Rollover	2	0
	231.0	27-Mar-1997	Injury	Rear End	2	0
	246.0	24-Aug-1997	Property Damage	Single Vehicle Rollover	0	0
	262.7	23-Feb-1997	Property Damage	Other Multi-Vehicle Collision	0	0
	263.0	2-Jan-1997	Injury	Single Vehicle Rollover	2	0
	264.0	18-Apr-1997	Injury	Other Single Vehicle Collision	1	0
Summary Highway #5	Property Damage Collisions	Personal Injury Collisions	Fatal Collisions	Total Collisions	Persons Injured	Persons Killed
	11	7	0	18	10	0
Highway #6 (Fort Resolution Highway)	On Km	Collision Date	Collision Severity	Collision Configuration	#Persons Injured	#Persons Killed
	27.0	18-Dec-1997	Property Damage	Rear End	0	0
	85.0	22-Mar-1997	Injury	Single Vehicle Rollover	1	0
Summary Highway #6	Property Damage Collisions	Personal Injury Collisions	Fatal Collisions	Total Collisions	Persons Injured	Persons Killed
	1	1	0	2	1	0

## Geographic Distribution – Section 11

Highway #7 (Liard Highway)	On Km	Collision Date	Collision Severity	Collision Configuration	#Persons Injured	#Persons Killed
	10.0	12-Oct-1997	Property Damage	Animal Strike	0	0
	105.0	15-Feb-1997	Injury	Rear End	3	0
	163.0	29-Aug-1997	Property Damage	Sideswipe Same Direction	0	0

Summary Highway #7	Property Damage Collisions	Personal Injury Collisions	Fatal Collisions	Total Collisions	Persons Injured	Persons Killed
	2	1	0	3	3	0

Highway #8 (Dempster Highway)	On Km	Collision Date	Collision Severity	Collision Configuration	#Persons Injured	#Persons Killed
	39.0	8-Jul-1997	Injury	Single Vehicle Rollover	2	0
	51.0	19-Aug-1997	Property Damage	Single Vehicle Rollover	0	0
	71.0	24-Aug-1997	Fatal	Single Vehicle Rollover	0	1
	73.0	21-Aug-1997	Injury	Single Vehicle Rollover	5	0
	78.0	19-Jun-1997	Property Damage	Single Vehicle Rollover	0	0
	79.0	7-Dec-1997	Injury	Single Vehicle Rollover	3	0
	95.0	10-Jul-1997	Property Damage	Single Vehicle Rollover	0	0
	97.0	12-Oct-1997	Injury	Collision with Fixed Object	3	0
	168.0	2-Sep-1997	Property Damage	Single Vehicle Rollover	0	0
	195.0	8-Jun-1997	Property Damage	Collision with Fixed Object	0	0
	215.0	1-Dec-1997	Property Damage	Ran Off Road	0	0
	235.0	25-Mar-1997	Property Damage	Single Vehicle Rollover	0	0

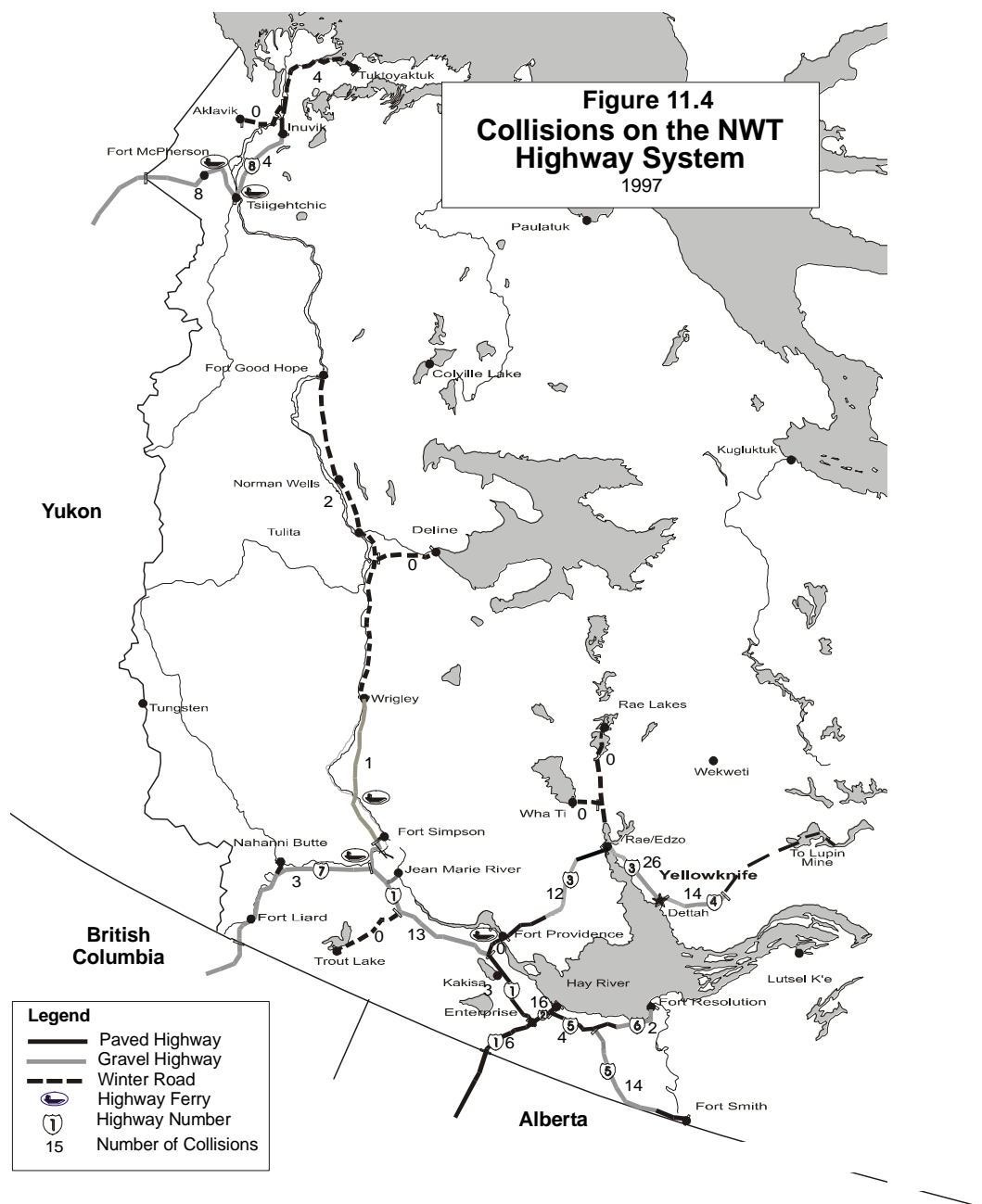
Summary Highway #8	Property Damage Collisions	Personal Injury Collisions	Fatal Collisions	Total Collisions	Persons Injured	Persons Killed
	7	4	1	12	13	1

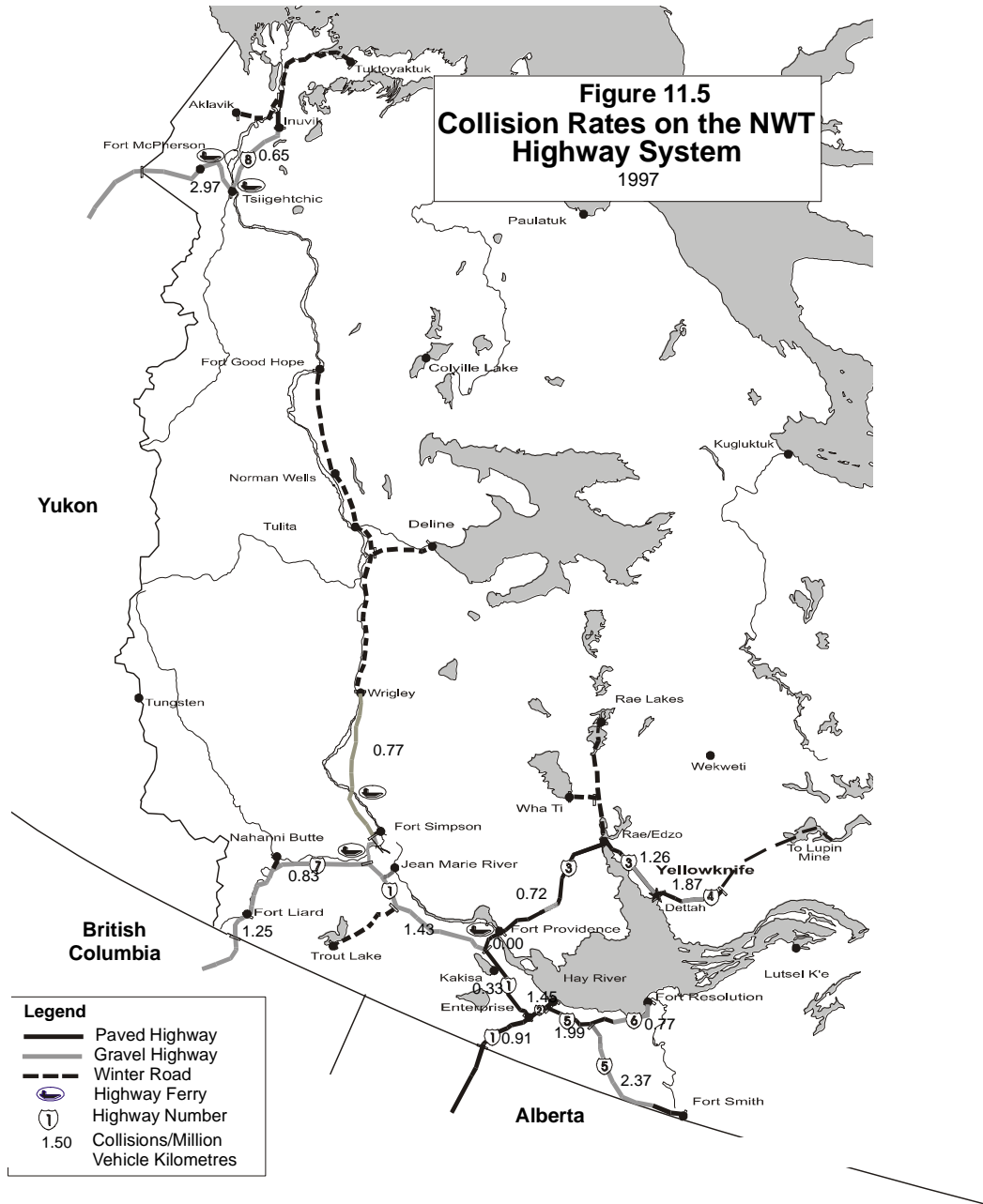
## Geographic Distribution – Section 11

Access and Winter Roads	Collision Date	Collision Severity	Collision Configuration	#Persons Injured	#Persons Killed
Cassidy Point Access Road	10-Aug-1997	Property Damage	Other Multi-Vehicle Collision	0	0
Dettah Winter Access Road	29-Mar-1997	Property Damage	Single Vehicle Rollover	0	0
Fort McPherson Access Road	18-Mar-1997	Injury	Collision with Fixed Object	2	0
Hay River Reserve Access Road	11-Jan-1997	Property Damage	Head-on	0	0
Hay River Reserve Access Road	31-Aug-1997	Injury	Single Vehicle Rollover	1	0
Hay River Reserve Access Road	19-Sep-1997	Injury	Ran Off Road	2	0
Hay River Reserve Access Road	2-Nov-1997	Property Damage	Collision with Fixed Object	0	0
Inuvik Access Road	21-Dec-1997	Property Damage	Other Multi-Vehicle Collision	0	0
Inuvik-Tuktoyaktuk Winter Road	9-Jan-1997	Injury	Collision with Parked Vehicle	1	0
Inuvik-Tuktoyaktuk Winter Road	6-Apr-1997	Injury	Single Vehicle Rollover	1	0
Inuvik-Tuktoyaktuk Winter Road	9-Apr-1997	Injury	Single Vehicle Rollover	1	0
Inuvik-Tuktoyaktuk Winter Road	13-Apr-1997	Property Damage	Collision with Fixed Object	0	0
Mackenzie Highway Winter Road	26-Feb-1997	Property Damage	Collision with Fixed Object	0	0
Mackenzie Highway Winter Road	19-Mar-1997	Property Damage	Collision with Fixed Object	0	0
Rae Access Road	20-Jan-1997	Property Damage	Other Multi-Vehicle Collision	0	0
Vee Lake Access Road	3-Feb-1997	Property Damage	Sideswipe - Opposite Direction	0	0
Yellowknife Access Road	14-Oct-1997	Injury	Collision with Fixed Object	1	0

Summary Access and Winter Roads	Property Damage Collisions	Personal Injury Collisions	Fatal Collisions	Total Collisions	Persons Injured	Persons Killed
	10	7	0	17	9	0

Summary All NWT Highways	Property Damage Collisions	Personal Injury Collisions	Fatal Collisions	Total Collisions	Persons Injured	Persons Killed
	79	60	4	143	100	6





# Appendix A1 – NWT MVA Report Form

1. ACCIDENT REPORT		2. LOCATION		3. PROPERTY DAMAGE		4. OTHER		5. R.C.M.P. DETACHMENT			
1. FATAL 2. MAJORITY		1. FATAL 2. MAJORITY		1. FATAL 2. MAJORITY		1. FATAL 2. MAJORITY		1. FATAL 2. MAJORITY			
DATE OF ACCIDENT		DATE OF ACCIDENT		DATE OF ACCIDENT		DATE OF ACCIDENT		DATE OF ACCIDENT			
CITY, TOWN, VIL.		CITY, TOWN, VIL.		CITY, TOWN, VIL.		CITY, TOWN, VIL.		CITY, TOWN, VIL.			
1. URBAN 2. RURAL 3. UNINCORPORATED 4. OTHER (SPECIAL AREA)		1. URBAN 2. RURAL 3. UNINCORPORATED 4. OTHER (SPECIAL AREA)		1. URBAN 2. RURAL 3. UNINCORPORATED 4. OTHER (SPECIAL AREA)		1. URBAN 2. RURAL 3. UNINCORPORATED 4. OTHER (SPECIAL AREA)		1. URBAN 2. RURAL 3. UNINCORPORATED 4. OTHER (SPECIAL AREA)			
ON		ON		ON		ON		ON			
AT		AT		AT		AT		AT			
IF NOT AT		IF NOT AT		IF NOT AT		IF NOT AT		IF NOT AT			
SPECIAL REFERENCE		SPECIAL REFERENCE		SPECIAL REFERENCE		SPECIAL REFERENCE		SPECIAL REFERENCE			
DO NOT WRITE IN THIS SPACE		DO NOT WRITE IN THIS SPACE		DO NOT WRITE IN THIS SPACE		DO NOT WRITE IN THIS SPACE		DO NOT WRITE IN THIS SPACE			
ROAD TYPE		ROAD TYPE		ROAD TYPE		ROAD TYPE		ROAD TYPE			
ROAD SURFACE TYPE		ROAD SURFACE TYPE		ROAD SURFACE TYPE		ROAD SURFACE TYPE		ROAD SURFACE TYPE			
CONDITION		CONDITION		CONDITION		CONDITION		CONDITION			
UNUSUAL R.O.P. CONDITION		UNUSUAL R.O.P. CONDITION		UNUSUAL R.O.P. CONDITION		UNUSUAL R.O.P. CONDITION		UNUSUAL R.O.P. CONDITION			
1. N/A 2. UNPAVED ONE-WAY 3. UNPAVED TWO-WAY 4. DIVIDED WITH RESTRAINING BARRIER 5. DIVIDED 6. RAMP 7. COLLECTOR LANE 8. OTHER 9. UNKNOWN		1. N/A 2. ASPHALT 3. CONCRETE 4. GRAVEL 5. DIRT 6. OTHER 7. UNKNOWN		1. N/A 2. DRY 3. WET 4. LOOSE SAND, DIRT OR GRAVEL 5. FRESH OIL 6. OTHER 7. UNKNOWN		1. N/A 2. UNDER CONSTRUCTION 3. UNDER REPAIRS 4. POLES, PULS, RUMPS 5. DEFECTIVE BRIDGES 6. CHANGING ROAD WIDE 7. SURVEY 8. OTHER 9. UNKNOWN		1. N/A 2. NONE 3. PRESENT - ON 4. PRESENT - OFF 5. LIGHT FAIL 6. OTHER 7. UNKNOWN		1. N/A 2. NONE 3. PRESENT - ON 4. PRESENT - OFF 5. LIGHT FAIL 6. OTHER 7. UNKNOWN	
OBJECT 1		OBJECT 1		OBJECT 1		OBJECT 1		OBJECT 1			
DRIVER LICENSE NO.		DRIVER LICENSE NO.		DRIVER LICENSE NO.		DRIVER LICENSE NO.		DRIVER LICENSE NO.			
LAST NAME DRIVER 1		LAST NAME DRIVER 1		LAST NAME DRIVER 1		LAST NAME DRIVER 1		LAST NAME DRIVER 1			
NUMBER AND STREET		NUMBER AND STREET		NUMBER AND STREET		NUMBER AND STREET		NUMBER AND STREET			
CITY		CITY		CITY		CITY		CITY			
PROV.		PROV.		PROV.		PROV.		PROV.			
POSTAL CODE		POSTAL CODE		POSTAL CODE		POSTAL CODE		POSTAL CODE			
DATE OF BIRTH		DATE OF BIRTH		DATE OF BIRTH		DATE OF BIRTH		DATE OF BIRTH			
PLATE NO.		PLATE NO.		PLATE NO.		PLATE NO.		PLATE NO.			
SERIAL OR VIN NUMBER		SERIAL OR VIN NUMBER		SERIAL OR VIN NUMBER		SERIAL OR VIN NUMBER		SERIAL OR VIN NUMBER			
LAST NAME OWNER 1		LAST NAME OWNER 1		LAST NAME OWNER 1		LAST NAME OWNER 1		LAST NAME OWNER 1			
NUMBER AND STREET		NUMBER AND STREET		NUMBER AND STREET		NUMBER AND STREET		NUMBER AND STREET			
CITY		CITY		CITY		CITY		CITY			
PROV.		PROV.		PROV.		PROV.		PROV.			
POSTAL CODE		POSTAL CODE		POSTAL CODE		POSTAL CODE		POSTAL CODE			
INSURANCE POLICY RESPONSIBILITY		INSURANCE POLICY RESPONSIBILITY		INSURANCE POLICY RESPONSIBILITY		INSURANCE POLICY RESPONSIBILITY		INSURANCE POLICY RESPONSIBILITY			
1. YES 2. NO		1. YES 2. NO		1. YES 2. NO		1. YES 2. NO		1. YES 2. NO			
OR POLICY NO.		OR POLICY NO.		OR POLICY NO.		OR POLICY NO.		OR POLICY NO.			
COMPANY ADDRESS		COMPANY ADDRESS		COMPANY ADDRESS		COMPANY ADDRESS		COMPANY ADDRESS			
EXPIRY DATE		EXPIRY DATE		EXPIRY DATE		EXPIRY DATE		EXPIRY DATE			
DAMAGE SEVERITY		DAMAGE SEVERITY		DAMAGE SEVERITY		DAMAGE SEVERITY		DAMAGE SEVERITY			
1. DRAINING 2. FLOODING 3. NEW 4. OTHER		1. DRAINING 2. FLOODING 3. NEW 4. OTHER		1. DRAINING 2. FLOODING 3. NEW 4. OTHER		1. DRAINING 2. FLOODING 3. NEW 4. OTHER		1. DRAINING 2. FLOODING 3. NEW 4. OTHER			
TOTAL OCCUPANTS THIS VEHICLE		TOTAL OCCUPANTS THIS VEHICLE		TOTAL OCCUPANTS THIS VEHICLE		TOTAL OCCUPANTS THIS VEHICLE		TOTAL OCCUPANTS THIS VEHICLE			
TOTAL REPAIR COST		TOTAL REPAIR COST		TOTAL REPAIR COST		TOTAL REPAIR COST		TOTAL REPAIR COST			
TOTAL COST		TOTAL COST		TOTAL COST		TOTAL COST		TOTAL COST			
NAME AND ADDRESS OF INDEPENDENT WITNESSES AND DESCRIPTION OF ACCIDENT		NAME AND ADDRESS OF INDEPENDENT WITNESSES AND DESCRIPTION OF ACCIDENT		NAME AND ADDRESS OF INDEPENDENT WITNESSES AND DESCRIPTION OF ACCIDENT		NAME AND ADDRESS OF INDEPENDENT WITNESSES AND DESCRIPTION OF ACCIDENT		NAME AND ADDRESS OF INDEPENDENT WITNESSES AND DESCRIPTION OF ACCIDENT			
16		16		16		16		16			
17		17		17		17		17			
18		18		18		18		18			
19		19		19		19		19			
20		20		20		20		20			
21		21		21		21		21			
22		22		22		22		22			
23		23		23		23		23			
24		24		24		24		24			
OFFICER'S NAME AND NAME		OFFICER'S NAME AND NAME		OFFICER'S NAME AND NAME		OFFICER'S NAME AND NAME		OFFICER'S NAME AND NAME			
SIGNATURE		SIGNATURE		SIGNATURE		SIGNATURE		SIGNATURE			
POLICE COMMENTS		POLICE COMMENTS		POLICE COMMENTS		POLICE COMMENTS		POLICE COMMENTS			
DIVISION		DIVISION		DIVISION		DIVISION		DIVISION			
REVIEW OFFICER		REVIEW OFFICER		REVIEW OFFICER		REVIEW OFFICER		REVIEW OFFICER			
DATE REVIEWED		DATE REVIEWED		DATE REVIEWED		DATE REVIEWED		DATE REVIEWED			
PROPOSED POLICE ACTION		PROPOSED POLICE ACTION		PROPOSED POLICE ACTION		PROPOSED POLICE ACTION		PROPOSED POLICE ACTION			

70	1.2	10	1.0	202	6.1	8.8	8.8	4.9			70
----	-----	----	-----	-----	-----	-----	-----	-----	--	--	----

### Appendix A3 – Brief Description of Fatal Collisions

---

The following is a brief description of the six fatal traffic collisions that took place in the Northwest Territories in 1997, resulting in eight fatalities.

<b>RCMP Detachment</b>	<b>Date</b>	<b>Description</b>
Hay River	20-Mar	Snowmobile struck by tractor-trailer unit while crossing Highway #1 south of Enterprise. Both driver and passenger on snowmobile sustained fatal injuries. Alcohol not involved.
Hay River	25-Mar	Two tractor-trailer units collided head-on near Km 130, Highway #1. Visibility limited in snow and blowing snow. Both drivers and sole occupants fatally injured. Alcohol not involved.
Colville Lake	19-May	Snowmobile rolled over on trail over frozen lake. Unhelmeted passenger pinned under snowmobile and sustained fatal injuries.
Hay River	29-Jun	Alcohol-impaired driver lost control of pickup truck and drove into boat launch area and submerged. Driver drowned.
Fort Liard	1-Jul	Young unhelmeted cyclist exited private driveway and was struck by van. Cyclist sustained fatal injuries.
Fort McPherson	24-Aug	Passenger car involved in single vehicle rollover on Km 71 of Highway #8. Right front passenger totally ejected and died at scene. Seatbelts were not worn by either driver or passenger.