

# **2009 NWT Traffic Collision Facts**

Department of Transportation  
Road Licensing and Safety Division  
October 2010

## **Acknowledgements**

This report was prepared by the Road Licensing and Safety Division of the Department of Transportation, Government of the Northwest Territories, in cooperation with the Planning and Policy and Environment Division.

If you have any comments or questions related to the content of this report, please contact the Road Licensing and Safety Division at telephone (867) 873-7406, or by facsimile at (867) 873-0120.

## 2009 QUICK FACTS REPORT

### 2009 Compared to 2008

	<u>2008</u>	<u>2009</u>	<u>% Change</u>
PROPERTY DAMAGE ONLY COLLISIONS	740	581	-21.5
PERSONAL INJURY COLLISIONS	116	103	-11.2
FATAL COLLISIONS	5	5	0.0
TOTAL REPORTED COLLISIONS	861	689	-20.0
NUMBER OF PERSONS KILLED	5	5	0.0
NUMBER OF PERSONS INJURED	173	149	-13.9
NWT HIGHWAY SYSTEM COLLISIONS	179	152	-15.1
RURAL COLLISIONS	5	14	180.0
COLLISIONS IN COMMUNITIES	677	523	-22.7
REGISTERED VEHICLES	31,042	33,036	6.4
LICENSED DRIVERS	24,323	24,449	0.5
NWT POPULATION [1]	43,282	43,439	0.4
COLLISIONS PER 100 LICENSED DRIVERS	3.54	2.82	-20.4
COLLISIONS PER 100 REGISTERED VEHICLES	2.77	2.09	-24.8
COLLISIONS PER 100 POPULATION	1.99	1.59	-20.3
COLLISIONS INVOLVING ALCOHOL	52	35	-32.7

[1] 2008 and 2009 population from NWT Bureau of Statistics July 1 estimate published in 'Quarterly Report', March 2010.

### Introduction

The Traffic Collision Information System (TCIS) is a computer-based system that compiles information on traffic collisions occurring throughout the Northwest Territories. Information in this publication is derived from the motor vehicle collision report forms that are completed by Royal Canadian Mounted Police detachments in accordance with Section 262 of the *Motor Vehicles Act*. The collection of this valuable data is made possible by the efforts and dedication of the many Royal Canadian Mounted Police officers across the Northwest Territories who complete the forms from their collision investigations.

This publication contains useful information on issues such as - drinking and driving, unsafe speed, young and old drivers, and use of occupant restraints - that affect crashes and their severities. This report is organized in twelve sections. The contents of each section are described below.

---

### Section 1 -Historical Trends

This section illustrates the 21-year history of collisions, victims and licensed drivers and vehicles. There were a total of 689 collisions reported in 2009, which is 20 percent fewer than 2008. Reporting definitions have remained the same since 1989. Trends in injuries, property damage collisions and total collisions declined steadily between 1989 and 1997. This decline took place in spite of the increased population and number of licensed drivers and registered vehicles. Total collisions and property damage only collisions, however, have generally been increasing since 1997.

Because of the small number of fatal collisions in the Northwest Territories, trends are difficult to identify and subject to year-to-year fluctuations. The 5 traffic fatalities reported in 2009 is close to the 21-year average while the 149 persons injured in 2009 is less than the 21-year average.

### Section 2 - Time of Occurrence

Section 2 shows the distribution of collisions by; time of day, by day of week, and by month. The highest number of collisions occurred during the winter months, November to March. Conversely, injury-producing collisions are more likely to occur during the summer months.

Collisions are most likely to take place during the late afternoon and early evening. More collisions take place on Fridays and Saturdays than on Sundays and weekdays.

### Section 3 - Major Contributing Factors

Contributing factors are those circumstances or factors that the reporting police officer perceives to have directly contributed to the collision or its severity. Factors are selected from four categories: driver condition, driver action, vehicle condition and driving environment.

Driver condition is nearly three times as prevalent in injury and fatal collisions (14%) than in all collisions (5%). Driver error accounts for 75% of all factors in collisions, as compared to vehicular (1%) and environmental (4%).

### Section 4 - Environmental Factors

The driving environment consists of road, light and weather conditions, as well as events leading up to and during a collision. It is important to understand all of these factors to properly design effective countermeasures for reducing collisions. Section 4 provides a breakdown of collisions for each of the different driving environments by severity and road system.

Most collisions occur under favourable conditions, such as clear weather, daylight and on a road surface that is free of defects. Intersection related collisions are far more frequent in communities than in rural areas or on the NWT Highway system.

### Section 5 - Driver Factors

This section describes the characteristics of drivers involved in collisions. In 2009, 992 drivers were involved in 689 collisions. This is an average of 1.44 drivers per collision. Details on driver age, gender, condition, action and class of licence is presented.

Of particular interest and concern is the over-representation of young drivers in collisions. Drivers aged 15 to 19 years are more than twice as likely to be involved in a collision than drivers aged 35 to 44 years. On August 1, 2005, the Graduated Driver Licensing Program was introduced to make the process of learning to drive a safer experience. New drivers are required to go through three stages to obtain a full Class 5 licence:

#### Stage 1 – Learner Class 7

- Must be 15 years of age.
- Must pass a written examination.
- The Learner's Stage lasts for a minimum of 12 months, providing the driver remains suspension free.

#### Conditions

- A Learner must drive with a fully licensed driver, who has a minimum of 24 months experience with a full Class 5 licence.
- Time spent suspended will have to be made up before moving on to the next stage.

- A Learner cannot have any passengers other than the supervisor.
- A Learner cannot drive between the hours of 11 p.m. and 6 a.m.

### Stage 2 – Probationary Class 5P

- Must be 16 years of age.
- Must have completed the 12-month Learner Stage.
- Must pass a practical road examination.
- The Probationary Stage lasts for a minimum of 12 months, providing the driver remains suspension free.

### Conditions

- No supervisor required.
- The number of passengers for a probationary driver can be equal to the number of seat belts available in the vehicle.
- Only one passenger is permitted in the front seat.

### Stage 3 – Full Class 5

- Must be 17 years of age.
- Must have completed the Probationary Stage.

## Section 6 - Vehicle Factors

There were a total of 1,199 vehicles involved in 689 collisions in 2009. This is an average of 1.74 vehicles per collision. This section provides details on the different vehicle types involved in collisions.

## Section 7 - Victims and Occupant Restraints

The Traffic Collision Information System (TCIS) attempts to capture information on all road users involved in collisions, whether they are injured or not. This data can be used to calculate exposure rates for road users by injury severity, age, road user class, gender and many other variables.

Of interest is the relationship between the severity of injury to motor vehicle occupants and seat belt use. The severity of injury is lower for victims using seat belts. In the Northwest Territories, only 9% of victims wearing seat belts were injured. On the other hand, 23% of the victims who were not wearing seat belts were injured.

The proper use of seat belts is an important factor when evaluating their effectiveness in reducing or preventing injuries. This is especially true of young children and the use of child restraints. In the Northwest Territories, it is estimated that less than 35% of children are restrained. It is further estimated that only half of these children are in a correctly installed device or one that is appropriate for the size and age of the child.

### Section 8 - Pedestrians

This section presents a summary of collisions involving pedestrians. For 2009:

- 10 pedestrians were injured;
- 2 pedestrians were killed;
- 17 % of the pedestrians injured or killed were under the age of 15;
- 83% pedestrians were injured within a community;
- 8% of pedestrians had been drinking or were impaired by alcohol.

### Section 9 - Alcohol

On December 1, 2004, the Department of Transportation introduced new measures to reduce impaired driving in the Northwest Territories:

- Drivers caught with .05 to .08 blood alcohol content automatically have their driver's licence suspended for 24 hours for a first offence or 30 days for further offences within a 2 year period.
- New drivers with any blood alcohol content automatically have their driver's licence suspended for 30 days.
- Drivers caught with over .08 blood alcohol content or who refuse to provide a breathalyzer sample automatically have their driver's licence suspended for 90 days in addition to Criminal Code charges for impaired driving.
- Drivers convicted of impaired driving under the Criminal Code are automatically prohibited from driving for:
  - 1 year for a first conviction;
  - 3 years for a second conviction;
  - 5 years for a third conviction;
  - 5 or more years for additional convictions or if the offence caused a death.
- Drivers wishing to have their driving privileges reinstated after an administrative licence suspension are required to pay reinstatement fees and may be required to satisfy conditions including:
  - An alcohol dependency assessment;
  - A driver assessment;
  - Participation in a driver improvement program;
  - Participation in an alcohol dependency awareness program;
  - Participation in an alcohol treatment program;
  - Participation in an alcohol ignition interlock program, or
  - Any other condition the Registrar considers appropriate.

- Police have the authority to impound a vehicle for 30 days if the vehicle is operated by a driver whose driving privileges are suspended.

In 2009, there were 35 collisions involving alcohol, resulting in 18 persons being injured. There was 1 alcohol-related fatality in 2009. These figures are significantly below the 21-year averages.

### **Section 10 - Off-Road Vehicles**

Off-road vehicles, including snowmobiles and All-Terrain Vehicles (ATVs) are a common form of transportation in isolated communities in the Northwest Territories. From the figures presented in this section, the facts below should be noted:

- 60% of off-road vehicle collisions resulted in injuries;
- 57% of off-road vehicle drivers involved in collisions are 24 years of age or younger;
- 27% of off-road vehicle drivers in collisions had been drinking or were impaired by alcohol;
- 18% of off-road vehicle drivers or passengers in collisions were wearing helmets;
- 70% of the off-road vehicles involved in collisions were snowmobiles.

### **Section 11 - Geographic Distribution**

This section presents a detailed summary of collisions by Region, RCMP detachment and severity. 56% of collisions took place in the North Slave Region. The North Slave Region also accounted for 50% of persons injured. Two fatalities took place in the South Slave Region while one fatality took place in each of the Inuvik, Fort Simpson and North Slave Regions.

A map detailing collisions that occurred on the NWT Highway system is shown on Page 44. Highway 3 (Yellowknife Highway) accounted for 30% of collisions occurring on the eight numbered highways.

### **Section 12 – National Comparison**

This section compares injury and fatality rates for Canadian jurisdictions for the 2008 calendar year. This is the most recent year for which complete data is available. Fatality and injury rates are shown; per 100,000 population, per billion vehicle-kilometres of travel, and per 100,000 licensed drivers for each province and territory. The casualty rates for the Northwest Territories are less than the Canada average for three of the six indicators.



## **Definitions**

**REPORTABLE MOTOR VEHICLE COLLISION** - an incident involving one or more motor vehicles resulting in death, personal injury or a minimum of \$1,000 in property damage. The Traffic Collision Information System (TCIS) only records reportable motor vehicle collisions that occur on, or adjacent to, roadways intended for use by the general public. The following is a list of words and terms used in reportable collisions:

**INCIDENT** - Any set of events not under human control that includes at least one occurrence of injury or damage. It originates when human control is lost and terminates when control is regained, or in the absence of persons who are able to regain control when all persons and property are at rest.

Excluded are events which are known to be the result of deliberate intent, legal intervention or natural disasters. As an example, if a vehicle catches fire due to mechanical failure and the driver is able to stop the car, this is not a traffic collision because control of the vehicle was never lost.

**VEHICLE** - is any vehicle designed to travel on land that is drawn, propelled or driven by any kind of power, including muscular power, but does not include a device designed to run exclusively on rails.

**MOTOR VEHICLE** - is a vehicle propelled or driven by power other than by wind, gravity or muscular power and includes a trailer, but does not include:

- (a) an aircraft or a marine vehicle,
- (b) a device that runs or is designed to run exclusively on rails,
- (c) a mechanically propelled wheelchair or mobility device.

**PEDESTRIAN** - is a person on foot, in a wheelchair or mobility device and includes a child in a carriage or carried by a person on foot, persons on ice skates, skis, roller blades, skate boards and persons pushing or pulling vehicles. A pedestrian does NOT include persons jumping or falling from a vehicle in motion.

**DAMAGE** - harm to property that reduces the monetary value of that property. It includes harm to animals that have monetary value. It excludes mechanical failure incurred by normal operation such as a tire blow out or broken fan belt.

**ROADWAY** - any highway, secondary road, rural road, street, avenue, parkway, lane, alley or bridge designed and intended for, or used by, the general public for the passage of vehicles and pedestrians. This includes sidewalks, boulevards and the immediate right-of-way adjacent to and parallel with the roadway. It also

includes winter/ice roads, trails, privately maintained roads, driveways and parking lots on which the general public may travel.

**NWT HIGHWAY COLLISION** – a collision occurring on one of the eight numbered highways or on an Access or Winter road maintained by the Department of Transportation.

**COMMUNITY COLLISION** – a collision occurring within the corporate limits of a community but not on any of the roads on the NWT Highway system.

**RURAL COLLISION** – a collision occurring outside of the corporate limits of a community and off of any of the roads on the NWT Highway system.

**PROPERTY DAMAGE ONLY COLLISION (Property Damage)** - a motor vehicle collision resulting in total damages over the prescribed amount as defined in the *Motor Vehicles Act* (\$1,000) with no personal injuries or deaths.

**INJURY COLLISION (Personal Injury)** - a motor vehicle collision resulting in a non-fatal injury to one or more persons. An injury is defined as any bodily harm resulting from the collision.

**FATAL COLLISION (Fatal)** - a motor vehicle collision resulting in death within 30 days to one or more involved persons. Death must be the result of injuries incurred from the collision. This excludes death from natural causes such as heart attacks.

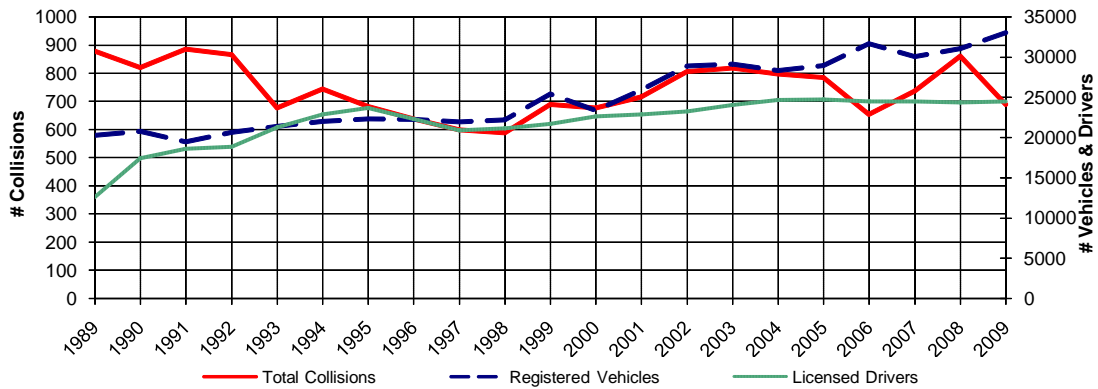
		Page
	<b>Quick Facts - Inside Front Cover</b>	
<b><u>Section 1</u></b>	<b><u>Historical Trends</u></b>	<b>1</b>
Figure	1.1 Trends in Licensed Drivers, Registered Vehicles and Collisions	1
	1.2 Trends in Collision Rates by Vehicles, Drivers and Population	1
	1.3 Trends in Injuries and Fatalities	2
	1.4 Trends in Property Damage Collisions	2
	1.5 Trends in Personal Injury Collisions	3
	1.6 Trends in Fatal Collisions	3
	1.7 Trends in All Reported Collisions	4
	1.8 Property Damage Collisions by Month and Year	4
	1.9 Personal Injury Collisions by Month and Year	5
	1.10 Fatal Collisions by Month and Year	5
	1.11 Total Collisions by Month and Year	6
<b><u>Section 2</u></b>	<b><u>Time of Occurrence</u></b>	<b>7</b>
Figure	2.1 Personal Injury Collisions by Month of Occurrence	7
	2.2 Fatal Collisions by Month of Occurrence	7
	2.3 Total Collisions by Month of Occurrence	7
	2.4 Collisions and Victims by Month of Occurrence	7
	2.5 Total Collisions by Time of Day	7
	2.6 Total Collisions by Day of Week	7
	2.7 Total Collisions by Time of Day and Day of Week	8
<b><u>Section 3</u></b>	<b><u>Major Contributing Factors</u></b>	<b>9</b>
Figure	3.1 Collision by Severity Where Human Condition was a Major Contributing Factor	9
	3.2 Collisions by Severity Where Human Action was a Major Contributing Factor	9
	3.3 Collisions by Severity Where Vehicle Condition was a Major Contributing Factor	9
	3.4 Collisions by Severity Where Environmental Condition was a Major Contributing Factor	10
	3.5 Collisions by Severity Where Major Contributing Factor was Unspecified or Unknown	10
	3.6 Major Contributing Factors by Collision Severity	10
	3.7 Collisions by Road System Where Human Condition was a Major Contributing Factor	11
	3.8 Collisions by Road System Where Human Action was a Major Contributing Factor	11
	3.9 Collisions by Road System Where Vehicle Condition was a Major Contributing Factor	11
	3.10 Collisions by Road System Where Environmental Condition was a Major Contributing Factor	12
	3.11 Collisions by Road System Where Major Contributing Factor was Unspecified or Unknown	12
	3.12 Major Contributing Factors in Collisions - Communities and NWT Highways	12

<b><u>Section 4</u></b>	<b><u>Environmental Factors</u></b>	<b>Page</b> <b>13</b>
Figure	4.1 Collisions by Road Surface Type and Severity	13
	4.2 Collisions by Road Surface Environmental Condition and Severity	13
	4.3 Collisions by Road Defect and Severity	14
	4.4 Collisions by Light Condition and Severity	14
	4.5 Collisions by Weather Condition and Severity	15
	4.6 Collisions by Configuration and Severity	16
	4.7 Collisions by Configuration and Road System	17
	4.8 Collisions by Collision Site and Severity	18
	4.9 Collisions by Collision Site and Road System	18
	4.10 Collisions by Roadway Alignment and Severity	18
	4.11 Collisions by Roadway Type and Severity	19
	4.12 Collisions by Sequence of Events and Severity	19
	4.13 Collisions by Sequence of Events and Road System	20
<b><u>Section 5</u></b>	<b><u>Driver Factors</u></b>	<b>21</b>
Figure	5.1 Drivers in Collisions and Relative Risk by Driver Age	21
	5.2 Collision Rates by Severity and Driver Age	21
	5.3 Number of Drivers in Collisions by Licence Class and Age	22
	5.4 Number of Drivers in Collisions by Driver Condition and Age	22
	5.5 Number of Drivers in Collisions by Driver Action and Age	23
<b><u>Section 6</u></b>	<b><u>Vehicle Factors</u></b>	<b>24</b>
Figure	6.1 Number of Vehicles in Collisions by Vehicle Type and Severity	24
	6.2 Number of Vehicles in Collisions by Vehicle Condition and Severity	24
	6.3 Number of Vehicles in Collisions by Vehicle Manoeuvre and Severity	25
	6.4 Number of Vehicles in Collisions by Vehicle Year and Severity	25
<b><u>Section 7</u></b>	<b><u>Victims and Occupant Restraints</u></b>	<b>26</b>
Figure	7.1 Fatalities Classification	26
	7.2 Injuries Classification	26
	7.3 Persons Injured by Road User Class and Age Group	27
	7.4 Persons Killed by Road User Class and Age Group	27
	7.5 Persons Injured or Killed by Road User Class and Gender	27
	7.6 Motor Vehicle Occupants by Injury Severity and Restraint Use	28
	7.7 Restraints Used/Not Used	28
	7.8 Motor Vehicle Occupants by Injury Severity and Age Group	29
	7.9 Victim Restraint Use Rate by Victim Age	29

			Page
<b><u>Section 8</u></b>	<b><u>Pedestrians</u></b>		<b>30</b>
Figure	8.1	Pedestrians Injured or Killed by Age Group	30
	8.2	Pedestrians Injured or Killed by Pedestrian Action and Age Group	30
	8.3	Pedestrians Injured or Killed by Place of Occurrence and Injury Severity	31
	8.4	Pedestrians Injured or Killed by Collision Site	31
	8.5	Pedestrians Injured or Killed by Pedestrian Condition	31
<b><u>Section 9</u></b>	<b><u>Alcohol</u></b>		<b>32</b>
Figure	9.1	Drinking Drivers in Collisions by Driver Age and Gender	32
	9.2	Collisions Involving Alcohol by Day of Week	32
	9.3	Percentage of Collisions Involving Alcohol by Year and Severity	32
	9.4	Number of Collisions and Victims Involving Alcohol	32
	9.5	Number of Alcohol Related Collisions by Time of Day	33
	9.6	Injury Severity by Alcohol Involvement	33
	9.7	Alcohol-Involved Collisions by Month	33
<b><u>Section 10</u></b>	<b><u>Off-Road Vehicles</u></b>		<b>34</b>
Figure	10.1	Off-Road Vehicle Collisions by Month and Severity	34
	10.2	Off-Road Vehicle Collisions by Vehicle Type	34
	10.3	Off-Road Vehicle Drivers in Collisions by Driver Age and Gender	35
	10.4	Off-Road Vehicle Collisions by Severity and Driver Condition	35
	10.5	Off-Road Vehicle Collisions by Severity and Driver Action	36
	10.6	Off-Road Vehicle Occupants by Injury Severity and Helmet Use	36
<b><u>Section 11</u></b>	<b><u>Geographic Distribution</u></b>		<b>37</b>
Figure	11.1	Collisions by Region, RCMP Detachment and Severity	37
	11.2	Collision Rates by Region and RCMP Detachment	38
	11.3	Collisions on the NWT Highway System	39
	11.4	Collisions on the NWT Highway System - Map	44
	11.5	Collision Rates on the NWT Highway System - Map	45
<b><u>Section 12</u></b>	<b><u>National Comparison</u></b>		<b>46</b>
Figure	12.1	Casualty Rates by Canadian Jurisdiction	46
<b><u>Appendix</u></b>			<b>47</b>
Section	A1	Northwest Territories Collision Report Form Side I	47
	A2	Northwest Territories Collision Report Form Side II	48
	A3	Brief Description of Fatal Collisions	49

## Trends in Licensed Drivers, Registered Vehicles and Collisions

Figure 1.1

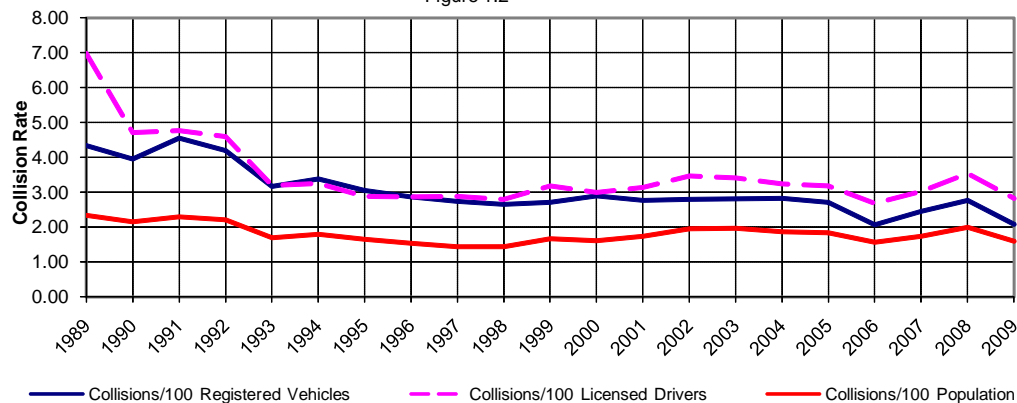


### 3 Year Summary

	2007	2008	2009	% Change
Registered Vehicles	30,078	31,042	33,036	6.4
Licensed Drivers	24,442	24,323	24,449	0.5
Total Collisions	738	861	689	-20.0

## Trends in Collision Rates by Vehicles, Drivers and Population

Figure 1.2

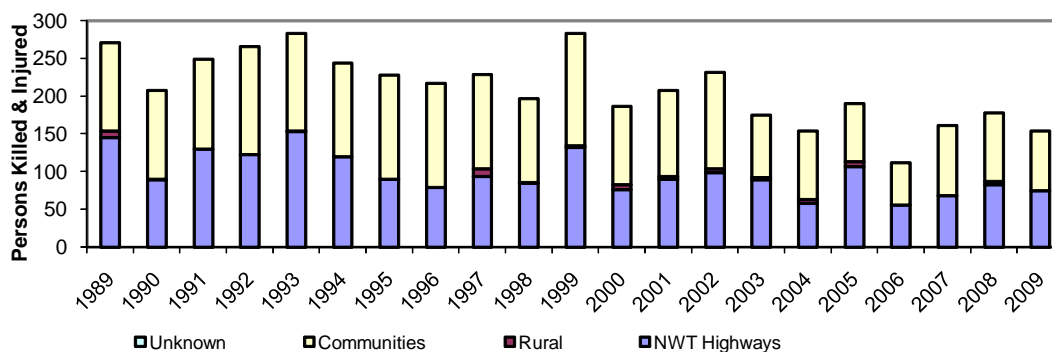


### 3 Year Summary

	2007	2008	2009	% Change
Collisions/100 Registered Vehicles	2.45	2.77	2.09	-24.8
Collisions/100 Licensed Drivers	3.02	3.54	2.82	-20.4
Collisions/100 Population	1.73	1.99	1.59	-20.3

## Trends in Injuries & Fatalities

Figure 1.3

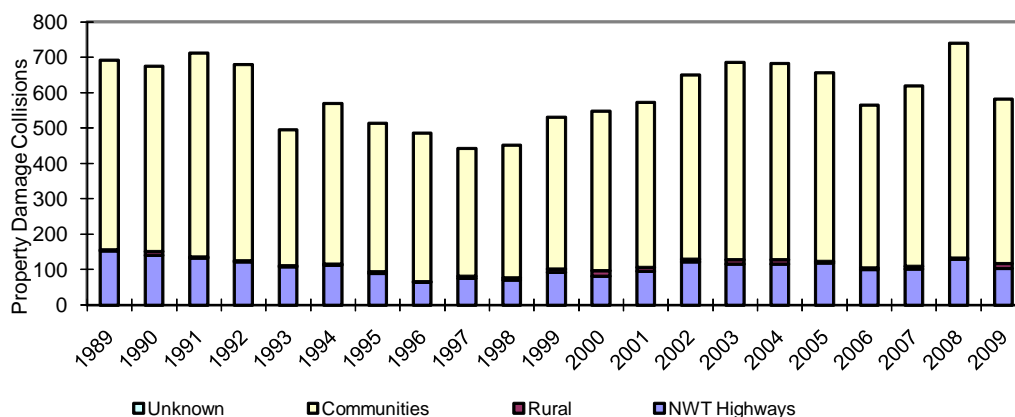


### 3 Year Summary

	Persons Injured					Persons Killed			
	2007	2008	2009	Average		2007	2008	2009	Average
NWT Highways	63	80	72	72	5	3	3	4	4
Rural	0	4	0	1	0	0	0	0	0
Communities	93	89	77	86	0	2	2	1	1
<b>Total</b>	<b>156</b>	<b>173</b>	<b>149</b>	<b>159</b>	<b>5</b>	<b>5</b>	<b>5</b>	<b>5</b>	<b>5</b>

## Trends in Property Damage Collisions

Figure 1.4

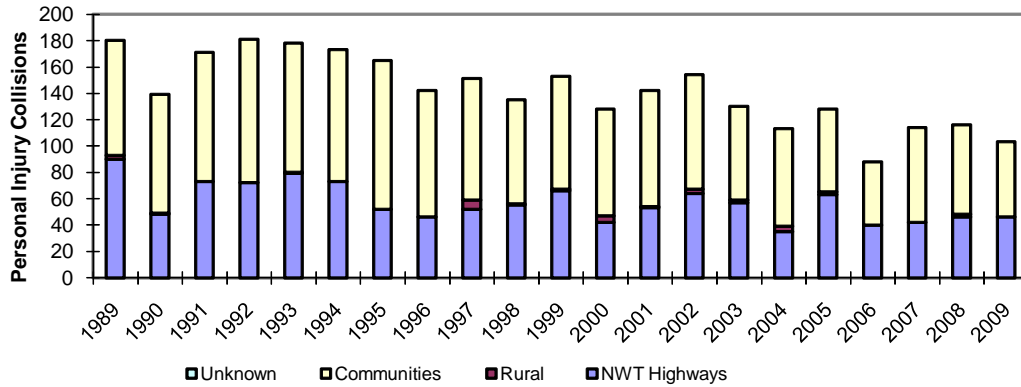


### 3 Year Summary

	Property Damage Collisions			
	2007	2008	2009	Average
NWT Highways	102	130	103	112
Rural	8	3	14	8
Communities	509	607	464	527
<b>Total</b>	<b>619</b>	<b>740</b>	<b>581</b>	<b>647</b>

## Trends in Personal Injury Collisions

Figure 1.5

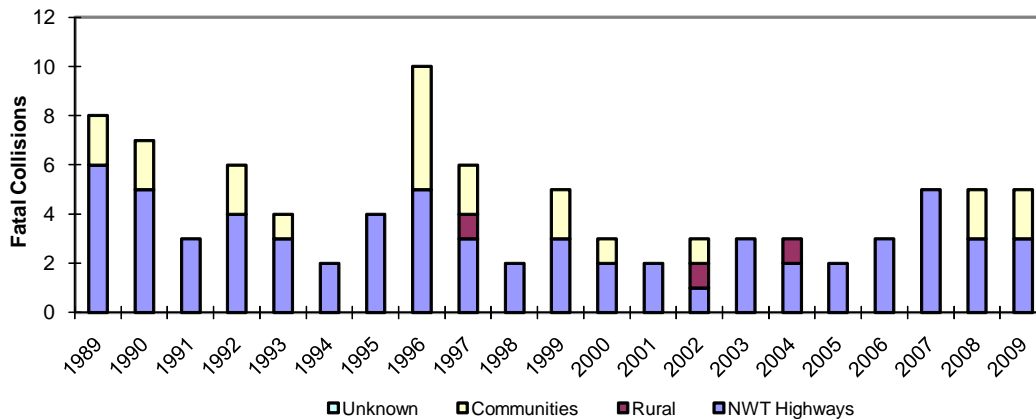


### 3 Year Summary

	Personal Injury Collisions			
	2007	2008	2009	Average
NWT Highways	42	46	46	45
Rural	0	2	0	1
Communities	72	68	57	66
<b>Total</b>	<b>114</b>	<b>116</b>	<b>103</b>	<b>111</b>

## Trends in Fatal Collisions

Figure 1.6



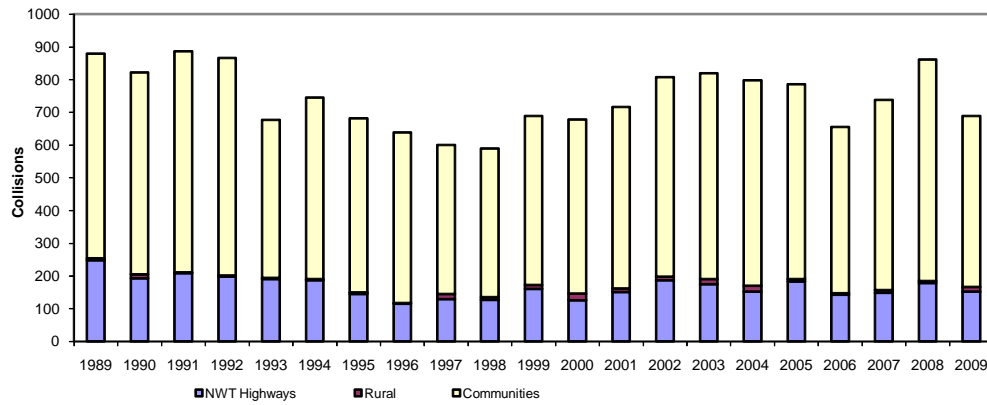
### 3 Year Summary

	Fatal Collisions			
	2007	2008	2009	Average
NWT Highways	5	3	3	4
Rural	0	0	0	0
Communities	0	2	2	1
<b>Total</b>	<b>5</b>	<b>5</b>	<b>5</b>	<b>5</b>



Trends in All Reported Collisions

Figure 1.7



### 3 Year Summary

	2007	2008	2009	Average
NWT Highways	149	179	152	160
Rural	8	5	14	9
Communities	581	677	523	594
<b>Total</b>	<b>738</b>	<b>861</b>	<b>689</b>	<b>763</b>

### Property Damage Collisions by Month and Year

Figure 1.8

Month	1999	2000	2001	2002	2003	2004	2005	2006	2007	2008	Avg. 99 to 08	2009
January	65	60	50	85	91	90	75	62	58	101	74	94
February	65	49	65	64	76	85	87	54	72	68	69	63
March	47	45	59	64	82	58	65	45	84	91	64	65
April	34	33	35	35	47	37	52	42	33	44	39	46
May	30	34	34	42	41	27	39	29	26	38	34	34
June	30	27	39	41	47	51	43	30	45	33	39	38
July	29	31	22	38	38	32	52	45	39	37	36	31
August	38	36	38	53	34	35	42	34	39	53	40	30
September	36	34	32	40	43	49	53	41	43	43	41	29
October	63	58	65	61	47	59	47	33	50	56	54	48
November	45	53	61	64	69	66	51	90	54	82	64	42
December	49	87	72	63	72	93	50	59	76	94	72	61
<b>Total</b>	<b>531</b>	<b>547</b>	<b>572</b>	<b>650</b>	<b>687</b>	<b>682</b>	<b>656</b>	<b>564</b>	<b>619</b>	<b>740</b>	<b>625</b>	<b>581</b>

**Personal Injury Collisions by Month and Year**

Figure 1.9

Month	1999	2000	2001	2002	2003	2004	2005	2006	2007	2008	Avg. 99 to 08	2009
January	15	17	13	11	9	15	10	12	6	10	12	15
February	13	14	14	6	25	8	8	4	15	16	12	5
March	11	9	7	8	11	7	10	8	9	10	9	13
April	9	4	7	5	7	11	3	10	7	7	7	7
May	6	9	8	9	10	9	5	4	3	11	7	8
June	12	9	14	15	9	10	15	8	10	10	11	8
July	22	11	6	19	12	9	17	6	11	9	12	7
August	12	7	16	16	11	18	15	8	13	7	12	6
September	11	9	10	13	6	10	9	5	12	6	9	7
October	20	12	21	22	15	6	13	9	9	10	14	10
November	10	10	10	15	7	3	16	10	8	10	10	9
December	12	17	16	15	8	7	7	4	11	10	11	8
<b>Total</b>	<b>153</b>	<b>128</b>	<b>142</b>	<b>154</b>	<b>130</b>	<b>113</b>	<b>128</b>	<b>88</b>	<b>114</b>	<b>116</b>	<b>127</b>	<b>103</b>

**Fatal Collisions by Month and Year**

Figure 1.10

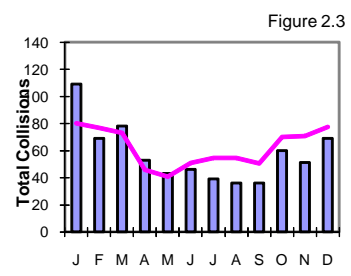
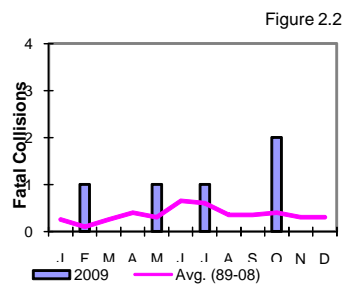
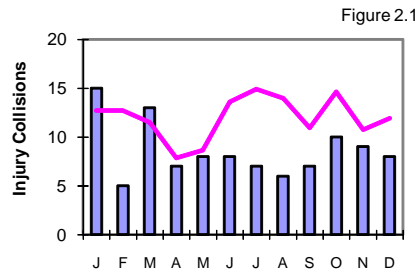
Month	1999	2000	2001	2002	2003	2004	2005	2006	2007	2008	Avg. 99 to 08	2009
January	0	1	1	0	1	0	0	1	0	0	0.4	0
February	0	0	0	1	0	1	0	0	0	0	0.2	1
March	0	0	0	0	0	0	0	0	0	0	0.0	0
April	1	0	1	0	0	0	0	0	0	0	0.2	0
May	0	0	0	0	0	0	1	0	1	0	0.2	1
June	0	0	0	0	1	1	1	0	0	0	0.3	0
July	1	0	0	0	0	0	0	1	1	2	0.5	1
August	1	1	0	0	0	0	0	0	0	0	0.2	0
September	1	0	0	0	0	0	0	0	2	2	0.5	0
October	0	1	0	1	0	0	0	1	0	0	0.3	2
November	0	0	0	1	0	0	0	0	0	1	0.2	0
December	1	0	0	0	1	1	0	0	1	0	0.4	0
<b>Total</b>	<b>5</b>	<b>3</b>	<b>2</b>	<b>3</b>	<b>3</b>	<b>3</b>	<b>2</b>	<b>3</b>	<b>5</b>	<b>5</b>	<b>3.4</b>	<b>5</b>

**Total Collisions by Month and Year**

Figure 1.11

Month	1999	2000	2001	2002	2003	2004	2005	2006	2007	2008	Avg. 99 to 08	2009
January	80	78	64	96	101	105	85	75	64	111	86	109
February	78	63	79	71	101	94	95	58	87	84	81	69
March	58	54	66	72	93	65	75	53	93	101	73	78
April	44	37	43	40	54	48	55	52	40	51	46	53
May	36	43	42	51	51	36	45	33	30	49	42	43
June	42	36	53	56	57	62	59	38	55	43	50	46
July	52	42	28	57	50	41	69	52	51	48	49	39
August	51	44	54	69	45	53	57	42	52	60	53	36
September	48	43	42	53	48	59	62	46	57	51	51	36
October	83	71	86	84	62	65	60	43	59	66	68	60
November	55	63	71	80	76	69	67	100	62	93	74	51
December	62	104	88	78	81	101	57	63	88	104	83	69
<b>Total</b>	<b>689</b>	<b>678</b>	<b>716</b>	<b>807</b>	<b>819</b>	<b>798</b>	<b>786</b>	<b>655</b>	<b>738</b>	<b>861</b>	<b>755</b>	<b>689</b>

## Collisions by Month of Occurrence



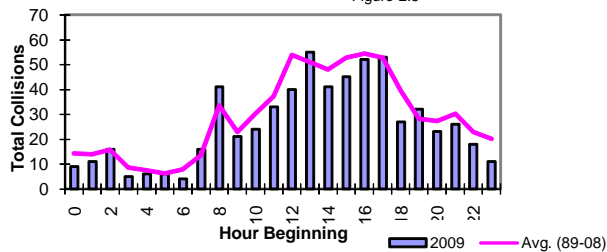
## Collisions & Victims by Month of Occurrence

Figure 2.4

Month	Number of Collisions				Number of Victims	
	Property Damage	Personal Injury	Fatal	Total	Injured	Killed
January	94	15	0	109	21	0
February	63	5	1	69	8	1
March	65	13	0	78	16	0
April	46	7	0	53	12	0
May	34	8	1	43	11	1
June	38	8	0	46	14	0
July	31	7	1	39	8	1
August	30	6	0	36	8	0
September	29	7	0	36	8	0
October	48	10	2	60	15	2
November	42	9	0	51	18	0
December	61	8	0	69	10	0
<b>Total</b>	<b>581</b>	<b>103</b>	<b>5</b>	<b>689</b>	<b>149</b>	<b>5</b>

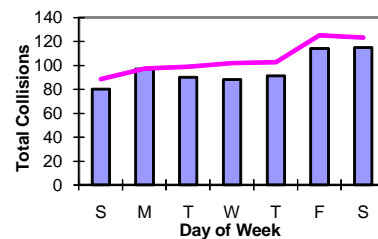
## Total Collisions by Time of Day

Figure 2.5



## Total Collisions by Day of Week

Figure 2.6



**Collisions by Time of Day & Day of Week\***

Figure 2.7

Collision Hour	Sunday	Monday	Tuesday	Wednesday	Thursday	Friday	Saturday	Total	%
12 to 1 a.m.	1	3	0	0	2	1	2	9	1.3
1 to 2 a.m.	1	1	1	0	2	2	4	11	1.6
2 to 3 a.m.	6	0	0	0	5	1	4	16	2.4
3 to 4 a.m.	2	0	2	0	0	1	0	5	0.7
4 to 5 a.m.	2	0	1	0	1	0	2	6	0.9
5 to 6 a.m.	0	0	1	1	1	1	2	6	0.9
6 to 7 a.m.	0	0	0	1	1	1	1	4	0.6
7 to 8 a.m.	1	3	1	3	4	3	1	16	2.4
8 to 9 a.m.	2	12	1	7	12	6	1	41	6.1
9 to 10 a.m.	2	3	2	4	3	1	6	21	3.1
10 to 11 a.m.	3	3	4	3	3	4	4	24	3.6
11 to 12 a.m.	1	10	6	5	4	4	3	33	4.9
12 to 1 p.m.	7	3	4	11	6	5	4	40	5.9
1 to 2 p.m.	5	11	7	10	3	10	9	55	8.1
2 to 3 p.m.	4	5	6	4	6	6	10	41	6.1
3 to 4 p.m.	4	5	6	4	5	14	7	45	6.7
4 to 5 p.m.	9	9	8	7	3	10	6	52	7.7
5 to 6 p.m.	6	4	12	9	7	10	5	53	7.9
6 to 7 p.m.	4	3	1	6	3	5	5	27	4.0
7 to 8 p.m.	3	6	3	4	4	4	8	32	4.7
8 to 9 p.m.	3	5	3	1	1	6	4	23	3.4
9 to 10 p.m.	2	2	4	3	1	6	8	26	3.9
10 to 11 p.m.	1	1	8	0	2	3	3	18	2.7
11 to 12 p.m.	2	0	0	3	2	1	3	11	1.6
Not Stated	9	8	9	2	10	9	13	60	8.9
<b>Total</b>	<b>80</b>	<b>97</b>	<b>90</b>	<b>88</b>	<b>91</b>	<b>114</b>	<b>115</b>	<b>675</b>	
<b>%</b>	<b>11.9</b>	<b>14.4</b>	<b>13.3</b>	<b>13.0</b>	<b>13.5</b>	<b>16.9</b>	<b>17.0</b>	<b>100.0</b>	

\* Excludes collisions in which Day of Week was unknown.

## Major Contributing Factors – Section 3

**Collisions by Severity Where Human Condition was a Major Contributing Factor**

Figure 3.1

Human Condition	Property Damage	Personal Injury	Fatal	% of Total	
				Total	Factors
Fatigued, Fell Asleep	0	0	0	0	0.0
Inexperience	0	0	0	0	0.0
Under Influence - Alcohol	21	13	1	35	5.1
Under Influence - Drugs	0	0	0	0	0.0
Sudden Illness, Lost Consciousness	0	1	0	1	0.1
Other Driver Condition	0	0	0	0	0.0
<b>Total</b>	<b>21</b>	<b>14</b>	<b>1</b>	<b>36</b>	<b>5.2</b>

**Collisions by Severity Where Human Action was a Major Contributing Factor**

Figure 3.2

Human Action	Property Damage	Personal Injury	Fatal	% of Total	
				Total	Factors
Following Too Closely	28	3	0	31	4.5
Distracted, Inattentive	67	10	0	77	11.2
Driving Too Fast for Conditions	65	22	1	88	12.8
Improper Turning or Passing	15	0	0	15	2.2
Failed to Yield Right-of-Way	27	16	0	43	6.2
Disobeyed Traffic Control/Officer	7	0	0	7	1.0
Driving on Wrong Side of Road	2	1	0	3	0.4
Driving in Wrong Direction	0	0	0	0	0.0
Backing Unsafely	141	4	0	145	21.0
Lost Control	83	25	1	109	15.8
Other Driver Action	0	0	0	0	0.0
<b>Total</b>	<b>435</b>	<b>81</b>	<b>2</b>	<b>518</b>	<b>75.2</b>

**Collisions by Severity Where Vehicle Condition was a Major Contributing Factor**

Figure 3.3

Vehicle Condition	Property Damage	Personal Injury	Fatal	% of Total	
				Total	Factors
Defective Brakes	0	0	0	0	0.0
Defective Steering	0	0	0	0	0.0
Defective Lights	0	0	0	0	0.0
Tire Blown Out	0	0	0	0	0.0
Unsecured Load, Spilled Load	0	1	0	1	0.1
Oversized Load, Overload	0	0	0	0	0.0
Visibility Obstructed	0	0	0	0	0.0
Other Vehicle Contributing Factor	4	0	0	4	0.6
<b>Total</b>	<b>4</b>	<b>1</b>	<b>0</b>	<b>5</b>	<b>0.7</b>

## Major Contributing Factors – Section 3

**Collisions by Severity Where Environmental Condition was a Major Contributing Factor**

Figure 3.4

Environmental Condition	Property Damage	Personal Injury	Fatal	% of Total	
				Total	Factors
Animal on Roadway	16	4	0	20	2.9
Road Surface or Condition	5	0	0	5	0.7
Obstruction/Debris on Road	1	0	0	1	0.1
View Obstructed, Glare, Reflection	1	1	0	2	0.3
Weather or Other Acts of God	0	0	1	1	0.1
Other Environmental Factor	0	0	0	0	0.0
<b>Total</b>	<b>23</b>	<b>5</b>	<b>1</b>	<b>29</b>	<b>4.2</b>

**Collisions by Severity Where Major Contributing Factor was Unspecified or Unknown**

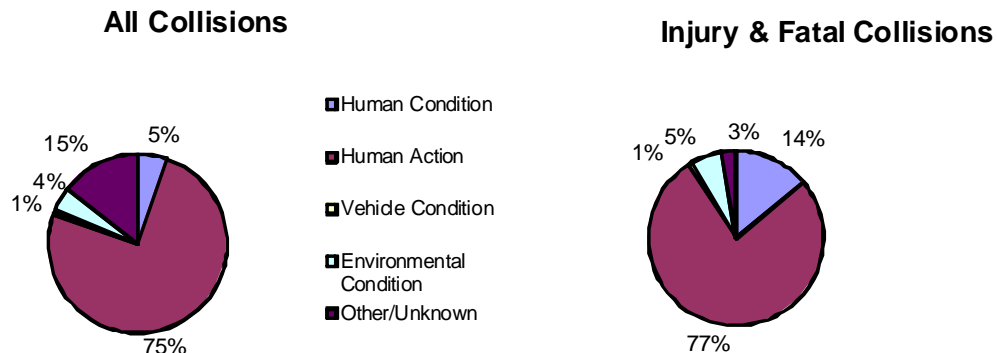
Figure 3.5

Factor	Property Damage	Personal Injury	Fatal	% of Total	
				Total	Factors
Unspecified	0	1	1	2	0.3
Unknown	98	1	0	99	14.4
<b>Total</b>	<b>98</b>	<b>2</b>	<b>1</b>	<b>101</b>	<b>14.7</b>

<b>Total All Factors</b>	<b>581</b>	<b>103</b>	<b>5</b>	<b>689</b>	<b>100.0</b>
--------------------------	------------	------------	----------	------------	--------------

**Major Contributing Factors by Collision Severity**

Figure 3.6



TCIS recognizes that a collision is usually the result of a chain of events. The collision data system accepts up to four contributing factors for each vehicle involved in a collision. During the analysis of collisions, knowledge of the factors is important. By removing any one of the factors, the collision may be avoided.

An example: Because of inattention, a driver may have failed to see a stop sign behind some trees and thereby reduced his/her stopping time. The car's brakes, being in poor condition, caused the car to spin out of control on ice and collide with another vehicle that was speeding through the intersection. The collision may not have occurred if any of these factors were not present.

## Major Contributing Factors – Section 3

### Collisions by Road System Where Human Condition was a Major Contributing Factor

Figure 3.7

Human Condition	NWT Highways	In Communities	Rural	% of Total	
				Total	Factors
Fatigued, Fell Asleep	0	0	0	0	0.0
Inexperience	0	0	0	0	0.0
Under Influence - Alcohol	8	27	0	35	5.1
Under Influence - Drugs	0	0	0	0	0.0
Sudden Illness, Lost Consciousness	1	0	0	1	0.1
Other Driver Condition	0	0	0	0	0.0
<b>Total</b>	<b>9</b>	<b>27</b>	<b>0</b>	<b>36</b>	<b>5.2</b>

### Collisions by Road System Where Human Action was a Major Contributing Factor

Figure 3.8

Human Action	NWT Highways	In Communities	Rural	% of Total	
				Total	Factors
Following Too Closely	2	29	0	31	4.5
Distracted, Inattentive	10	66	1	77	11.2
Driving Too Fast for Conditions	24	63	1	88	12.8
Improper Turning or Passing	2	12	1	15	2.2
Failed to Yield Right-of-Way	5	38	0	43	6.2
Disobeyed Traffic Control/Officer	1	6	0	7	1.0
Driving on Wrong Side of Road	0	3	0	3	0.4
Driving in Wrong Direction	0	0	0	0	0.0
Backing Unsafely	2	135	8	145	21.0
Lost Control	70	38	1	109	15.8
Other Driver Action	0	0	0	0	0.0
<b>Total</b>	<b>116</b>	<b>390</b>	<b>12</b>	<b>518</b>	<b>75.2</b>

### Collisions by Road System Where Vehicle Condition was a Major Contributing Factor

Figure 3.9

Vehicle Condition	NWT Highways	In Communities	Rural	% of Total	
				Total	Factors
Defective Brakes	0	0	0	0	0.0
Defective Steering	0	0	0	0	0.0
Defective Lights	0	0	0	0	0.0
Tire Blown Out	0	0	0	0	0.0
Unsecured Load, Spilled Load	1	0	0	1	0.1
Oversized Load, Overload	0	0	0	0	0.0
Visibility Obstructed	0	0	0	0	0.0
Other Vehicle Contributing Factor	0	4	0	4	0.6
<b>Total</b>	<b>1</b>	<b>4</b>	<b>0</b>	<b>5</b>	<b>0.7</b>



## Major Contributing Factors – Section 3

**Collisions by Road System Where Environmental Condition was a Major Contributing Factor**

Figure 3.10

Environmental Condition	NWT			% of Total	
	Highways	In Communities	Rural	Total	Factors
Animal on Roadway	19	1	0	20	2.9
Road Surface or Condition	1	4	0	5	0.7
Obstruction/Debris on Road	1	0	0	1	0.1
View Obstructed, Glare, Reflection	0	2	0	2	0.3
Weather or Other Acts of God	1	0	0	1	0.1
Other Environmental Factor	0	0	0	0	0.0
<b>Total</b>	<b>22</b>	<b>7</b>	<b>0</b>	<b>29</b>	<b>4.2</b>

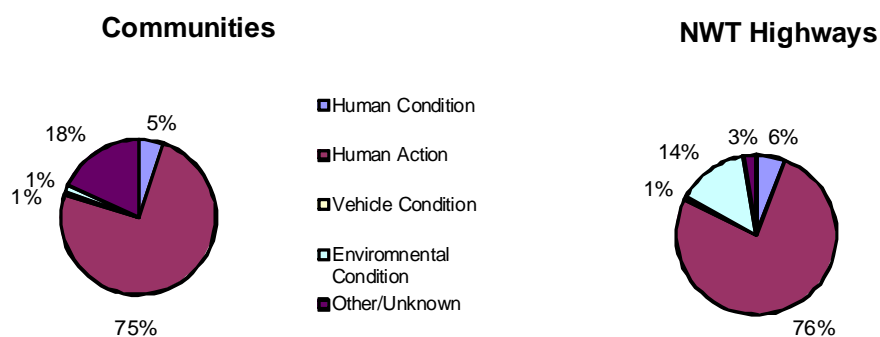
**Collisions by Road System Where Major Contributing Factor was Unspecified or Unknown**

Figure 3.11

Factor	NWT			% of Total	
	Highways	In Communities	Rural	Total	Factors
Unspecified	1	1	0	2	0.3
Unknown	3	94	2	99	14.4
<b>Total</b>	<b>4</b>	<b>95</b>	<b>2</b>	<b>101</b>	<b>14.7</b>
<b>Total All Factors</b>	<b>152</b>	<b>523</b>	<b>14</b>	<b>689</b>	<b>100.0</b>

**Major Contributing Factors in Collisions - Communities and NWT Highways**

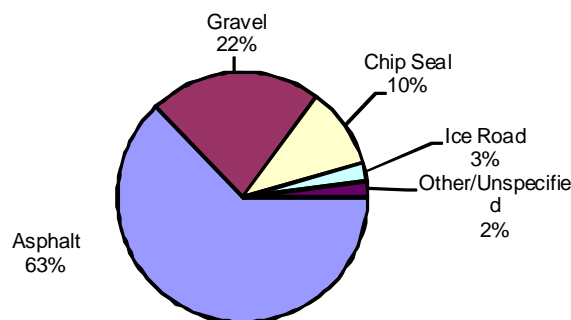
Figure 3.12



## Collisions by Road Surface Type and Severity

Figure 4.1

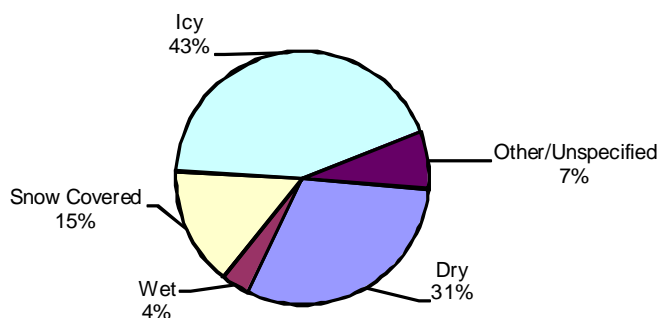
Road Surface Type	Property Damage	Personal Injury	Fatal	Total	%
Asphalt	381	51	1	433	62.8
Concrete	1	0	0	1	0.1
Gravel (Crushed Stone)	126	26	1	153	22.2
Earth, Dirt	4	0	0	4	0.6
Chip Seal	46	23	3	72	10.4
Brick, Cobblestone	0	0	0	0	0.0
Wooden	0	0	0	0	0.0
Steel	0	0	0	0	0.0
Ice Road	14	3	0	17	2.5
Unspecified	9	0	0	9	1.3
<b>Total</b>	<b>581</b>	<b>103</b>	<b>5</b>	<b>689</b>	<b>100.0</b>



## Collisions by Road Surface Environmental Condition and Severity

Figure 4.2

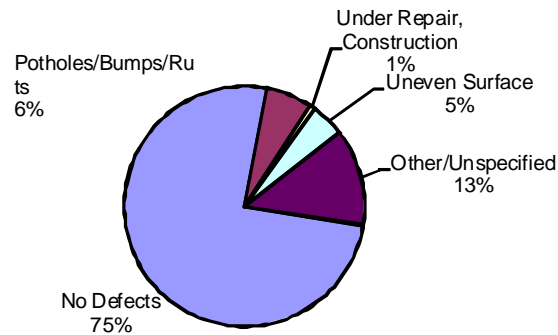
Surface Condition	Property Damage	Personal Injury	Fatal	Total	%
Dry	174	35	3	212	30.8
Wet	22	2	1	25	3.6
Snow (Fresh, Loose)	87	9	1	97	14.1
Slush, Wet Snow	5	2	0	7	1.0
Icy	249	48	0	297	43.1
Loose Sand/Gravel/Dirt	12	5	0	17	2.5
Muddy	1	0	0	1	0.1
Fresh Oil	0	1	0	1	0.1
Flooded	0	0	0	0	0.0
Other	2	0	0	2	0.3
Unspecified	29	1	0	30	4.4
<b>Total</b>	<b>581</b>	<b>103</b>	<b>5</b>	<b>689</b>	<b>100</b>



## Collisions by Road Defect and Severity

Figure 4.3

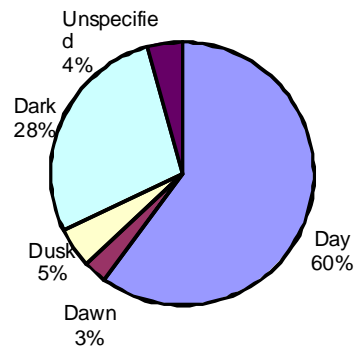
Road Defect	Property Damage	Personal Injury	Fatal	Total	%
No Defects	441	74	5	520	75.5
Potholes/Bumps/Ruts	31	12	0	43	6.2
Under Repair, Construction	2	3	0	5	0.7
Uneven Pavement Surface	30	2	0	32	4.6
Worn	18	9	0	27	3.9
Obscured or Faded Markings	3	1	0	4	0.6
Other	13	1	0	14	2.0
Unspecified	43	1	0	44	6.4
<b>Total</b>	<b>581</b>	<b>103</b>	<b>5</b>	<b>689</b>	<b>100.0</b>



## Collisions by Light Condition and Severity

Figure 4.4

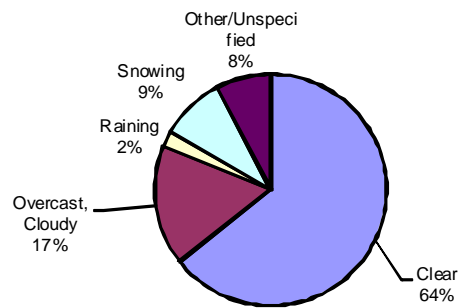
Light Condition	Property Damage	Personal Injury	Fatal	Total	%
Day	356	57	1	414	60.1
Dawn	19	1	0	20	2.9
Dusk	22	12	0	34	4.9
Dark	155	32	4	191	27.7
Unspecified	29	1	0	30	4.4
<b>Total</b>	<b>581</b>	<b>103</b>	<b>5</b>	<b>689</b>	<b>100.0</b>



**Collisions by Weather Condition and Severity**

Figure 4.5

Weather Condition	Property Damage	Personal Injury	Fatal	Total	%
Clear (Sunny)	375	69	0	444	64.4
Overcast, Cloudy (No Precipitation)	91	21	3	115	16.7
Raining	15	1	0	16	2.3
Snowing	52	8	1	61	8.9
Freezing Rain/Sleet/Hail	3	2	1	6	0.9
Visibility Limitations (fog, dust, etc.)	7	1	0	8	1.2
Strong Winds	0	0	0	0	0.0
Other	0	0	0	0	0.0
Unspecified	38	1	0	39	5.7
<b>Total</b>	<b>581</b>	<b>103</b>	<b>5</b>	<b>689</b>	<b>100.0</b>

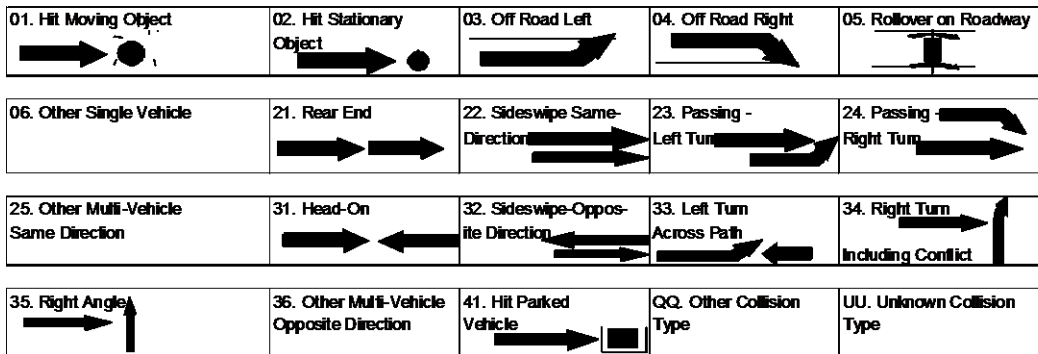


**Collisions by Configuration and Severity**

Figure 4.6

Configuration*	Property Damage	Personal Injury	Fatal	Total	% of Total
01. Hit Moving Object					
a) With Bison	11	4	1	16	2.3
b) With Other Animal	6	0	0	6	0.9
c) With Pedestrian	2	9	2	13	1.9
d) Other	2	0	0	2	0.3
02. Hit Stationary Object	33	7	0	40	5.8
03. Off Road Left					
a) With Rollover	16	9	2	27	3.9
b) No Rollover	21	3	0	24	3.5
04. Off Road Right					
a) With Rollover	14	16	0	30	4.4
b) No Rollover	22	5	0	27	3.9
05. Rollover on Roadway	5	3	0	8	1.2
06. Other Single Vehicle	0	0	0	0	0.0
21. Rear End	84	18	0	102	14.8
22. Sideswipe - Same Direction	18	1	0	19	2.8
23. Passing - Left Turn	1	0	0	1	0.1
24. Passing - Right Turn	2	0	0	2	0.3
25. Other Multi-Vehicle Same Direction	6	0	0	6	0.9
31. Head-On	8	1	0	9	1.3
32. Sideswipe - Opposite Direction	14	2	0	16	2.3
33. Left Turn Across Path	6	7	0	13	1.9
34. Right Turn Including Conflict	1	2	0	3	0.4
35. Right Angle	86	15	0	101	14.7
36. Other Multi-Vehicle Opposite Direction	7	1	0	8	1.2
41. Hit Parked Vehicle	216	0	0	216	31.3
QQ. Other Collision Type	0	0	0	0	0.0
UU. Unknown Collision Type	0	0	0	0	0.0
<b>Total</b>	<b>581</b>	<b>103</b>	<b>5</b>	<b>689</b>	<b>100.0</b>

**\*Collision Configurations**

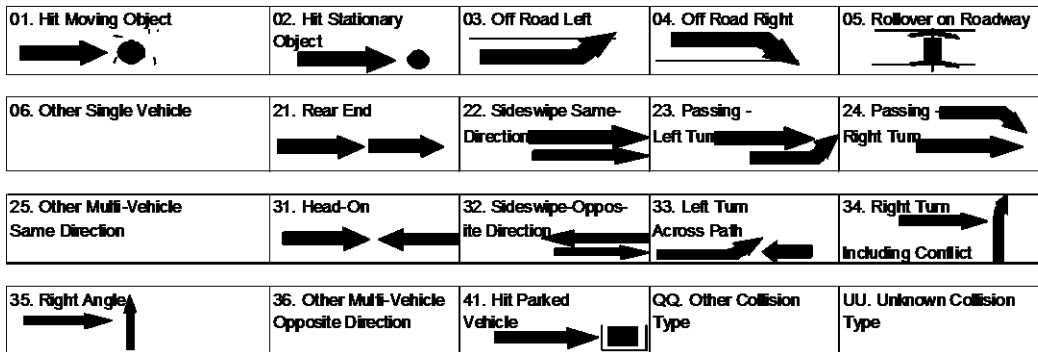


**Collisions by Configuration and Road System**

Figure 4.7

Configuration*	NWT Highways	In Communities	Rural	Total	% of Total
01. Hit Moving Object					
a) With Bison	16	0	0	16	2.3
b) With Other Animal	5	1	0	6	0.9
c) With Pedestrian	3	10	0	13	1.9
d) Other	1	1	0	2	0.3
02. Hit Stationary Object	10	29	1	40	5.8
03. Off Road Left					
a) With Rollover	22	5	0	27	3.9
b) No Rollover	13	11	0	24	3.5
04. Off Road Right					
a) With Rollover	27	3	0	30	4.4
b) No Rollover	20	4	3	27	3.9
05. Rollover on Roadway	6	2	0	8	1.2
06. Other Single Vehicle	0	0	0	0	0.0
21. Rear End	8	94	0	102	14.8
22. Sideswipe - Same Direction	2	17	0	19	2.8
23. Passing - Left Turn	0	1	0	1	0.1
24. Passing - Right Turn	0	2	0	2	0.3
25. Other Multi-Vehicle Same Direction	0	6	0	6	0.9
31. Head-On	2	7	0	9	1.3
32. Sideswipe - Opposite Direction	9	7	0	16	2.3
33. Left Turn Across Path	2	11	0	13	1.9
34. Right Turn Including Conflict	0	3	0	3	0.4
35. Right Angle	5	96	0	101	14.7
36. Other Multi-Vehicle Opposite Direction	0	8	0	8	1.2
41. Hit Parked Vehicle	1	205	10	216	31.3
QQ. Other Collision Type	0	0	0	0	0.0
UU. Unknown Collision Type	0	0	0	0	0.0
<b>Total</b>	<b>152</b>	<b>523</b>	<b>14</b>	<b>689</b>	<b>100.0</b>

**\*Collision Configurations**



## Collisions by Collision Site and Severity

Figure 4.8

Collision Site	Property Damage	Personal Injury	Fatal	Total	%
Non-Intersection	264	52	4	320	46.4
Intersection - Two Public Roadways	122	37	1	160	23.2
Intersection - Parking Lot, Driveway	111	10	0	121	17.6
Railroad Level Crossing	2	0	0	2	0.3
Bridge, Overpass, Viaduct	0	1	0	1	0.1
Tunnel, Underpass	0	0	0	0	0.0
Passing, Climbing Lane	0	0	0	0	0.0
Ramp	0	0	0	0	0.0
Other	76	3	0	79	11.5
Unknown	6	0	0	6	0.9
<b>Total</b>	<b>581</b>	<b>103</b>	<b>5</b>	<b>689</b>	<b>100.0</b>

## Collisions by Collision Site and Road System

Figure 4.9

Collision Site	NWT Highways	In Communities	Rural	Total	%
Non-Intersection	128	185	7	320	46.4
Intersection - Two Public Roadways	20	140	0	160	23.2
Intersection - Parking Lot, Driveway	2	117	2	121	17.6
Railroad Level Crossing	1	1	0	2	0.3
Bridge, Overpass, Viaduct	1	0	0	1	0.1
Tunnel, Underpass	0	0	0	0	0.0
Passing, Climbing Lane	0	0	0	0	0.0
Ramp	0	0	0	0	0.0
Other	0	74	5	79	11.5
Unknown	0	6	0	6	0.9
<b>Total</b>	<b>152</b>	<b>523</b>	<b>14</b>	<b>689</b>	<b>100.0</b>

## Collisions by Roadway Alignment and Severity

Figure 4.10

Road Alignment	Property Damage	Personal Injury	Fatal	Total	%
Straight & Level	455	67	2	524	76.1
Straight with Grade	48	11	0	59	8.6
Curved and Level	38	17	2	57	8.3
Curve with Grade	23	6	1	30	4.4
Top of Hill or Grade	3	0	0	3	0.4
Bottom of Hill or Grade	5	1	0	6	0.9
Other	0	0	0	0	0.0
Unknown	9	1	0	10	1.5
<b>Total</b>	<b>581</b>	<b>103</b>	<b>5</b>	<b>689</b>	<b>100.0</b>

**Collisions by Roadway Type and Severity**

Figure 4.11

Road Type	Property Damage	Personal Injury	Fatal	Total	%
One-Way, Two Lane	0	0	0	0	0.0
One-Way, Multi Lane	0	0	0	0	0.0
Undivided, Two-Way, Two Lane	351	84	5	440	63.9
Undivided, Two-Way, Multi Lane	24	4	0	28	4.1
Divided, Barrier Median	0	0	0	0	0.0
Divided with Median, No Barrier	17	8	0	25	3.6
Divided, Divider Unspecified	0	0	0	0	0.0
Other	184	7	0	191	27.7
Unknown	5	0	0	5	0.7
<b>Total</b>	<b>581</b>	<b>103</b>	<b>5</b>	<b>689</b>	<b>100.0</b>

**Collision Sequence of Events by Severity**

Figure 4.12

	Property Damage	Personal Injury	Fatal	Total	%
<b>Non-Moving Objects</b>					
Hit Parked Trailer	0	0	0	0	0.0
Hit Non-Fixed Object	1	0	0	1	0.1
Hit Building	4	0	0	4	0.6
Hit Ditch	0	0	0	0	0.0
Hit Embankment, Dirt Pile, Rock	3	1	0	4	0.6
Hit Culvert End, Drainage Structure	0	0	0	0	0.0
Hit Tree, Bush, Hedge	0	0	0	0	0.0
Hit Utility Pole, Lamp Pole	1	0	0	1	0.1
Hit Curb	1	0	0	1	0.1
Hit Post	2	0	0	2	0.3
Hit Traffic Barrier	1	0	0	1	0.1
Hit Fixed Object Part of Road Structure	2	0	0	2	0.3
Hit Fixed Object NOT Part of Road Structure	3	0	0	3	0.4
Hit Other Type Fixed Object	5	0	0	5	0.7
<b>Sub Total Fixed Objects</b>	<b>23</b>	<b>1</b>	<b>0</b>	<b>24</b>	<b>3.5</b>
<b>Moveable Objects</b>					
Another Road Vehicle	449	47	0	496	72.0
Bison	11	4	1	16	2.3
Other Animal	6	0	0	6	0.9
Pedestrian	2	9	2	13	1.9
Other Moveable Object	2	0	0	2	0.3
<b>Sub Total Moveable Objects</b>	<b>470</b>	<b>60</b>	<b>3</b>	<b>533</b>	<b>77.4</b>
<b>Non-Collision Events</b>					
Ran Off Road	43	0	0	43	6.2
Rollover	35	28	2	65	9.4
Jack Knife or Trailer Swing	0	0	0	0	0.0
Fire or Explosion	0	0	0	0	0.0
Load Spill	0	0	0	0	0.0
Load Shift	0	0	0	0	0.0
Submersion	0	0	0	0	0.0
Other Non-Collision Event	0	0	0	0	0.0
<b>Sub Total Non-Collision Events</b>	<b>78</b>	<b>28</b>	<b>2</b>	<b>108</b>	<b>15.7</b>
<b>Other/Unknown Event</b>	<b>10</b>	<b>14</b>	<b>0</b>	<b>24</b>	<b>3.5</b>
<b>Grand Total</b>	<b>581</b>	<b>103</b>	<b>5</b>	<b>689</b>	<b>100.0</b>



**Collision Sequence of Events by Road System**

Figure 4.13

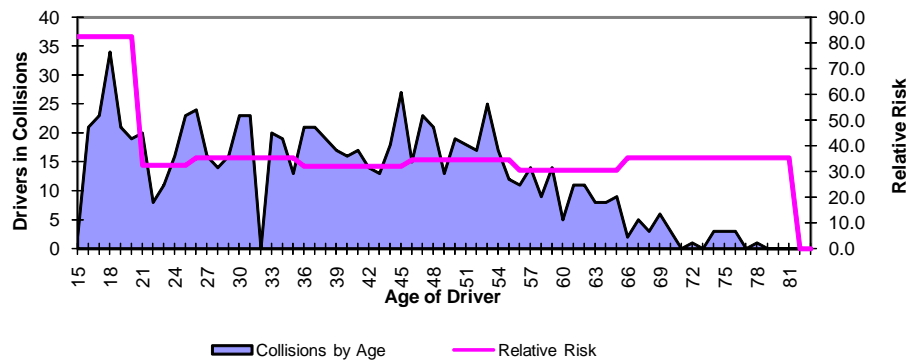
	NWT Highways	In Communities	Rural	Total	%
<b>Non-Moving Objects</b>					
Hit Parked Trailer	0	0	0	0	0.0
Hit Non-Fixed Object	0	1	0	1	0.1
Hit Building	0	4	0	4	0.6
Hit Ditch	0	0	0	0	0.0
Hit Embankment, Dirt Pile, Rock	2	1	1	4	0.6
Hit Culvert End, Drainage Structure	0	0	0	0	0.0
Hit Tree, Bush, Hedge	0	0	0	0	0.0
Hit Utility Pole, Lamp Pole	0	1	0	1	0.1
Hit Curb	0	1	0	1	0.1
Hit Post	0	2	0	2	0.3
Hit Traffic Barrier	0	1	0	1	0.1
Hit Fixed Object Part of Road Structure	1	1	0	2	0.3
Hit Fixed Object NOT Part of Road Structure	0	3	0	3	0.4
Hit Other Type Fixed Object	0	5	0	5	0.7
<b>Sub Total Fixed Objects</b>	<b>3</b>	<b>20</b>	<b>1</b>	<b>24</b>	<b>3.5</b>
<b>Moveable Objects</b>					
Another Road Vehicle	29	457	10	496	72.0
Bison	16	0	0	16	2.3
Other Animal	5	1	0	6	0.9
Pedestrian	3	10	0	13	1.9
Other Moveable Object	1	1	0	2	0.3
<b>Sub Total Moveable Objects</b>	<b>54</b>	<b>469</b>	<b>10</b>	<b>533</b>	<b>77.4</b>
<b>Non-Collision Events</b>					
Ran Off Road	0	0	0	0	0.0
Rollover	55	10	0	65	9.4
Jack Knife or Trailer Swing	0	0	0	0	0.0
Fire or Explosion	0	0	0	0	0.0
Load Spill	0	0	0	0	0.0
Load Shift	0	0	0	0	0.0
Submersion	0	0	0	0	0.0
Other Non-Collision Event	0	0	0	0	0.0
<b>Sub Total Non-Collision Events</b>	<b>55</b>	<b>10</b>	<b>0</b>	<b>65</b>	<b>9.4</b>
<b>Unknown Event</b>	<b>40</b>	<b>24</b>	<b>3</b>	<b>67</b>	<b>9.7</b>
<b>Grand Total</b>	<b>152</b>	<b>523</b>	<b>14</b>	<b>689</b>	<b>100.0</b>

**Licensed Drivers and Drivers in Collisions by Driver Age**

Figure 5.1

	Under 16	16 to 19	20 to 24	25 to 34	35 to 44	45 to 54	55 to 64	65 and Over	Not Stated	Total
Licensed Drivers	126	1,232	2,283	5,487	5,250	5,628	3,340	1,103	0	24,449
Drivers in Collisions	13	99	74	194	169	195	102	39	107	992

**Drivers in Collisions and Relative Risk by Driver Age**



**Collision Rates (Collisions Per 1,000 Licensed Drivers) by Severity and Driver Age**

Figure 5.2

	15 to 19	20 to 24	25 to 34	35 to 44	45 to 54	55 to 64	65 and Over	Average Rate
Property Damage	56.0	28.0	28.4	26.9	30.0	26.0	32.6	34.2
Personal Injury & Fatal	26.5	4.4	6.9	5.3	4.6	4.5	2.7	6.4
<b>Total</b>	<b>82.5</b>	<b>32.4</b>	<b>35.4</b>	<b>32.2</b>	<b>34.6</b>	<b>30.5</b>	<b>35.4</b>	<b>40.6</b>
<b>Relative Risk*</b>	<b>2.0</b>	<b>0.8</b>	<b>0.9</b>	<b>0.8</b>	<b>0.9</b>	<b>0.8</b>	<b>0.9</b>	<b>1.0</b>

\* Relative Risk = (% of drivers in collisions in age group)/(% of total licence holders in age group)

The age of drivers involved in traffic collisions can form the basis of various analysis and countermeasure programs. The reason for this interest is the over-involvement of young drivers in collisions and the disproportionately large number of charges laid as a result of collisions.

Figure 5.1 shows that the relative risk of drivers between the ages of 15 and 19 are 2 times more likely to be involved in a collision than the average driving population. On average, 8% of 15 to 19 year olds were involved in collisions, compared to 3% of 35 to 44 year olds.

Other factors such as exposure, risk, experience, alcohol, and vehicle type must be known to fully understand the relationship of driver age and collision involvement. Studies indicate that the risk of having a collision is a factor of driving experience, not just driver age.

Number of Drivers Involved in Collisions by Licence Class and Age

Figure 5.3

Age Group	Class 1	Class 2	Class 3	Class 4	Class 5	Class 6	Class 7	Class 7 Req'd.	Not Licence Stated	Not	Total
Under 16	0	0	0	0	1	0	1	6	5	0	13
16	0	0	0	0	13	0	5	1	1	1	21
17	0	0	1	0	18	0	0	2	2	0	23
18	1	1	1	0	25	0	1	0	4	1	34
19	0	0	0	0	14	0	2	2	3	0	21
20	2	0	3	0	13	0	0	0	1	0	19
21-24	1	0	2	3	42	0	1	0	5	1	55
25-34	15	1	7	14	143	0	3	1	4	6	194
35-44	16	2	4	14	128	0	1	2	0	2	169
45-54	23	7	13	18	125	0	0	2	2	5	195
55-64	15	1	5	7	70	0	0	1	1	2	102
65 and over	5	1	3	3	27	0	0	0	0	0	39
Not Stated	1	0	0	0	3	0	0	2	0	101	107
Drivers in Collisions	79	13	39	59	622	0	14	19	28	119	992
Total Licensed Drivers	1,360	184	753	1,158	19,262	2	1,730	N/A	N/A	N/A	24,449
Relative Risk*	1.43	1.74	1.28	1.26	0.80	0.00	0.20	N/A	N/A	N/A	1.00

\*Relative Risk = (% of Total Collisions in Class)/(% of Total Licence Holders in Class)

Number of Drivers Involved in Collisions by Condition and Age

Figure 5.4

Driver Condition	< 16	16	17	18	19	20	21-24	25-34	35-44	45-54	55-64	65+	Not Stated	Total	%
Apparently Normal	4	16	16	26	15	16	40	157	151	162	94	32	3	732	73.8
Fatigued, Fell Asleep	0	0	0	0	0	0	0	2	0	2	3	0	0	7	0.7
Inexperience	9	4	4	2	1	2	3	9	1	1	1	0	0	37	3.7
Under Influence - Alcohol	0	1	3	5	1	0	5	8	6	4	2	0	1	36	3.6
Under Influence - Drugs	0	0	0	0	0	0	0	0	0	0	0	0	0	0	0.0
Sudden Illness, Lost Consciousness	0	0	0	0	0	0	0	0	0	1	0	0	0	1	0.1
Other Condition	0	0	0	0	1	0	0	3	0	1	0	0	0	5	0.5
Unknown	0	0	0	1	3	1	7	15	11	24	3	6	103	174	17.5
Total	13	21	23	34	21	19	55	194	169	195	102	39	107	992	
%	1.3	2.1	2.3	3.4	2.1	1.9	5.5	19.6	17.0	19.7	10.3	3.9	10.8		100.0

Number of Drivers Involved in Collisions by Driver Action and Age

Figure 5.5

Driver Action	Not													Total	%
	< 16	16	17	18	19	20	21-24	25-34	35-44	45-54	55-64	65+	Stated		
Driving Properly	1	5	5	10	4	5	7	64	57	75	32	15	2	282	28.4
Following Too Closely	2	1	0	0	1	2	2	4	10	8	2	0	1	33	3.3
Distracted, Inattentive	1	1	5	4	2	2	6	19	12	18	9	4	0	83	8.4
Driving Too Fast	3	2	6	9	6	5	12	32	20	7	8	3	3	116	11.7
Improper Turning or Passing	0	1	0	0	0	1	1	2	2	5	2	0	1	15	1.5
Failing to Yield Right of Way	2	3	4	2	1	1	3	9	8	10	2	1	0	46	4.6
Disobeying Traffic Control/Officer	0	0	0	0	1	0	1	1	2	1	0	0	3	9	0.9
Driving on Wrong Side of Road	0	0	0	0	0	0	0	1	1	0	0	0	1	3	0.3
Driving in Wrong Direction	0	0	0	0	0	0	0	0	0	0	0	0	0	0	0.0
Backing Unsafely	0	4	2	2	4	2	16	32	22	35	25	11	2	157	15.8
Lost Control	4	3	1	6	2	1	6	21	26	24	20	4	0	118	11.9
Other Driver Action	0	0	0	0	0	0	0	1	0	3	0	0	0	4	0.4
Unknown	0	1	0	1	0	0	1	8	9	9	2	1	94	126	12.7
Total	13	21	23	34	21	19	55	194	169	195	102	39	107	992	
%	1.3	2.1	2.3	3.4	2.1	1.9	5.5	19.6	17.0	19.7	10.3	3.9	10.8		100.0

## Number of Vehicles in Collisions by Vehicle Type and Severity

Figure 6.1

Vehicle Type	Property Damage	Personal Injury	Fatal	Total	%
Passenger Car	279	45	0	324	27.0
Passenger Van	85	10	0	95	7.9
Light Utility Vehicle	196	19	2	217	18.1
Pickup Truck	339	47	3	389	32.4
Panel/Cargo Van	15	2	0	17	1.4
Other Truck/Van <= 4536 kg	5	0	0	5	0.4
Unit Truck > 4536 kg	18	2	0	20	1.7
Road Tractor	11	7	0	18	1.5
School Bus	1	0	0	1	0.1
Small School Bus	0	0	0	0	0.0
Urban Transit Bus	0	0	0	0	0.0
Intercity Bus	0	0	0	0	0.0
Bus - Unspecified	0	0	0	0	0.0
Motorcycle	1	2	0	3	0.3
Limited Speed Motorcycle	0	0	0	0	0.0
Off Road Vehicles (ATV)	1	6	0	7	0.6
Bicycle	0	3	0	3	0.3
Motor Home	1	0	0	1	0.1
Farm Equipment	0	0	0	0	0.0
Construction Equipment	3	0	0	3	0.3
Fire Engine	0	0	0	0	0.0
Snowmobile	7	9	0	16	1.3
Streetcar	0	0	0	0	0.0
Other	0	0	0	0	0.0
Unknown	80	0	0	80	6.7
<b>Total</b>	<b>1042</b>	<b>152</b>	<b>5</b>	<b>1199</b>	<b>100.0</b>

## Number of Vehicles in Collisions by Vehicle Condition and Severity

Figure 6.2

Vehicle Condition	Property Damage	Personal Injury	Fatal	Total	%
No Apparent Defect	851	133	4	988	82.4
Defective Brakes	1	1	0	2	0.2
Defective Steering	1	0	0	1	0.1
Defective Lighting	1	0	0	1	0.1
Tire Blown Out	1	0	0	1	0.1
Unsecured Load, Spilled Load	2	1	0	3	0.3
Oversized Load, Overload	1	0	0	1	0.1
Visibility Obstructed	7	0	0	7	0.6
Other Defective Vehicular Parts	11	1	0	12	1.0
Other Vehicular Factor	1	1	0	2	0.2
Unknown	165	15	1	181	15.1
<b>Total</b>	<b>1042</b>	<b>152</b>	<b>5</b>	<b>1199</b>	<b>100.0</b>

**Number of Vehicles in Collisions by Vehicle Manoeuvre and Severity**

Figure 6.3

Vehicle Manoeuvre	Property Damage	Personal Injury	Fatal	Total	%
Going Straight Ahead	274	79	4	357	29.8
Turning Left	53	15	0	68	5.7
Turning Right	26	5	0	31	2.6
Making U-Turn	5	0	0	5	0.4
Changing Lanes	3	0	0	3	0.3
Merging	0	0	0	0	0.0
Reversing	166	5	0	171	14.3
Overtaking	4	1	0	5	0.4
Negotiating Curve	50	14	1	65	5.4
Slowing or Stopped in Traffic	130	25	0	155	12.9
Starting in Traffic	2	1	0	3	0.3
Leaving Roadside	9	0	0	9	0.8
Stopped/Parked Legally	217	0	0	217	18.1
Stopped/Parked Illegally	8	0	0	8	0.7
Swerving to Avoid Collision	8	7	0	15	1.3
Run-away or Roll-away Vehicle	3	0	0	3	0.3
Unspecified Manoeuvre	0	0	0	0	0.0
Other	0	0	0	0	0.0
Unknown	84	0	0	84	7.0
<b>Total</b>	<b>1042</b>	<b>152</b>	<b>5</b>	<b>1199</b>	<b>100.0</b>

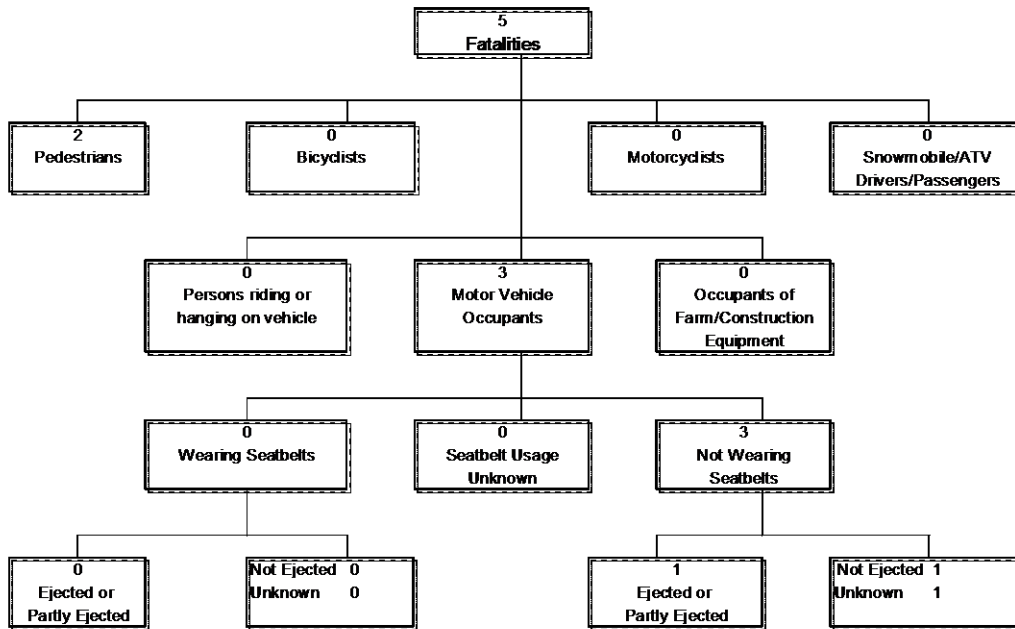
**Number of Vehicles in Collisions by Vehicle Year and Severity**

Figure 6.4

Model Year	Property Damage	Personal Injury	Fatal	Total	%
2010	7	1	0	8	0.7
2009	66	6	0	72	6.0
2008	138	16	1	155	12.9
2007	98	21	0	119	9.9
2006	86	11	2	99	8.3
2005	80	11	0	91	7.6
2004	59	18	0	77	6.4
2003	60	6	0	66	5.5
2002	55	7	1	63	5.3
2001	49	6	1	56	4.7
2000	36	4	0	40	3.3
1999	32	2	0	34	2.8
1998 & Older	172	35	0	207	17.3
Unspecified	104	8	0	112	9.3
<b>Total</b>	<b>1042</b>	<b>152</b>	<b>5</b>	<b>1199</b>	<b>100.0</b>

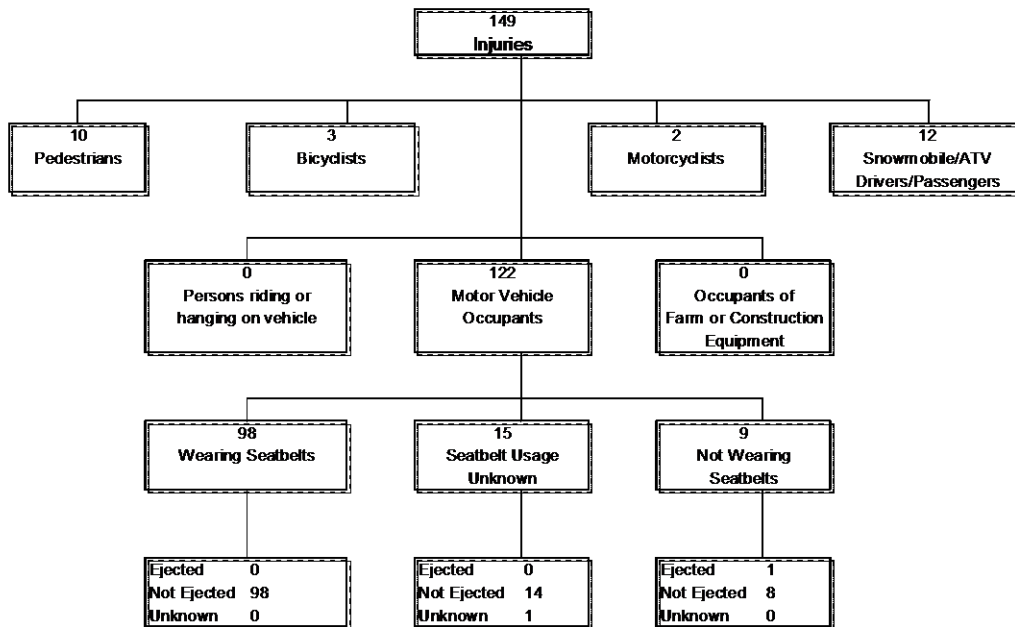
**Fatalities Classification**  
(January 1 to December 31, 2009)

Figure 7.1



**Injuries Classification**  
(January 1 to December 31, 2009)

Figure 7.2



## Victims and Occupant Restraints – Section 7

**Persons Injured by Road User Class and Age Group**

Figure 7.3

Road User Class	0 to 4	5 to 14	15 to 19	20 to 24	25 to 34	35 to 44	45 to 54	55 to 64	65 & older	Not Stated	Total	%
Motor Vehicle Driver	1	0	10	4	16	19	16	8	1	1	76	51.0
Motor Vehicle Passenger	2	3	4	3	12	8	3	5	1	5	46	30.9
Pedestrian	0	2	2	2	2	2	0	0	0	0	10	6.7
Bicyclist	1	0	1	0	0	0	1	0	0	0	3	2.0
Motorcyclist (includes passengers)	0	0	0	0	1	0	0	1	0	0	2	1.3
ATV Operators & Passengers	0	0	1	0	2	0	0	1	0	0	4	2.7
Snowmobile Operators & Passengers	0	1	2	0	1	1	0	1	0	2	8	5.4
Farm/Construction Equipment	0	0	0	0	0	0	0	0	0	0	0	0.0
Other	0	0	0	0	0	0	0	0	0	0	0	0.0
Unspecified	0	0	0	0	0	0	0	0	0	0	0	0.0
<b>Total</b>	<b>4</b>	<b>6</b>	<b>20</b>	<b>9</b>	<b>34</b>	<b>30</b>	<b>20</b>	<b>16</b>	<b>2</b>	<b>8</b>	<b>149</b>	<b>100.0</b>

**Persons Killed by Road User Class and Age Group**

Figure 7.4

Road User Class	0 to 4	5 to 14	15 to 19	20 to 24	25 to 34	35 to 44	45 to 54	55 to 64	65 & older	Not Stated	Total	%
Motor Vehicle Driver	0	0	1	0	0	0	0	0	0	0	1	20.0
Motor Vehicle Passenger	0	0	0	1	0	0	0	0	1	0	2	40.0
Pedestrian	0	0	0	0	1	1	0	0	0	0	2	40.0
Bicyclist	0	0	0	0	0	0	0	0	0	0	0	0.0
Motorcyclist (includes passengers)	0	0	0	0	0	0	0	0	0	0	0	0.0
ATV Operators & Passengers	0	0	0	0	0	0	0	0	0	0	0	0.0
Snowmobile Operators & Passengers	0	0	0	0	0	0	0	0	0	0	0	0.0
Farm/Construction Equipment	0	0	0	0	0	0	0	0	0	0	0	0.0
Other	0	0	0	0	0	0	0	0	0	0	0	0.0
Unspecified	0	0	0	0	0	0	0	0	0	0	0	0.0
<b>Total</b>	<b>0</b>	<b>0</b>	<b>1</b>	<b>1</b>	<b>1</b>	<b>1</b>	<b>0</b>	<b>0</b>	<b>1</b>	<b>0</b>	<b>5</b>	<b>100.0</b>

**Persons Injured or Killed by Road User Class and Gender**

Figure 7.5

Road User Class	Persons Injured				Persons Killed			
	Male	Female	Unknown	Total	Male	Female	Unknown	Total
Motor Vehicle Driver	47	29	0	76	0	1	0	1
Motor Vehicle Passenger	15	31	0	46	2	0	0	2
Pedestrian	6	4	0	10	1	1	0	2
Bicyclist	2	1	0	3	0	0	0	0
Motorcyclist (includes passengers)	2	0	0	2	0	0	0	0
ATV Operators & Passengers	4	0	0	4	0	0	0	0
Snowmobile Operators & Passengers	6	2	0	8	0	0	0	0
Farm/Construction Equipment	0	0	0	0	0	0	0	0
Other	0	0	0	0	0	0	0	0
Unspecified	0	0	0	0	0	0	0	0
<b>Total</b>	<b>82</b>	<b>67</b>	<b>0</b>	<b>149</b>	<b>3</b>	<b>2</b>	<b>0</b>	<b>5</b>



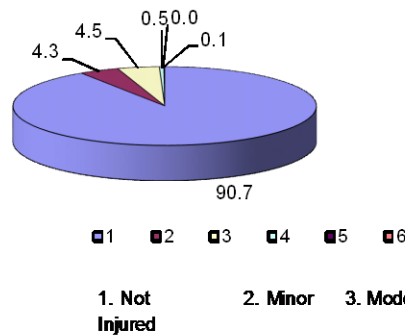
## Motor Vehicle\* Occupants by Injury Severity and Restraint Use

Figure 7.6

Injury Severity	Not Restrained	Lap Belt Only	Lap & Torso Belt	Child Restraint Device	Restraint Use Unknown	Total	%
Not Injured	41	7	919	31	318	1316	91.3
Minimal Injuries	4	1	41	3	9	58	4.0
Minor Injuries	4	0	47	0	4	55	3.8
Major (Hospital Admission)	1	0	5	0	1	7	0.5
Fatal	3	0	0	0	0	3	0.2
Injured - Extent Unknown	0	0	1	0	1	2	0.1
<b>Total</b>	<b>53</b>	<b>8</b>	<b>1013</b>	<b>34</b>	<b>333</b>	<b>1441</b>	<b>100.0</b>

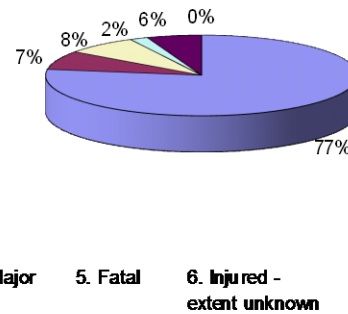
\* Excludes occupants of motorcycles, mopeds, snowmobiles, all-terrain vehicles, and farm/construction equipment

Restraints Used



Restraints Not Used

Figure 7.7



Note: The totals used to calculate the percentages in Figures 7.2 and 7.3 do not include occupants where seat belt use was coded as "unknown".

### Injury Classification

- 1 Not Injured - no visible signs or any complaint of injury
- 2 Minor - minor complaint of injury by victim, but no medical treatment required
- 3 Moderate - an injury requiring medical attention but not serious enough to require hospital admission
- 4 Major - an injury serious enough to require hospital admission
- 5 Fatal - death within 30 days as a result of injuries incurred in the traffic collision
- 6 Injured- Extent Unknown - victim sustained injuries, precise extent unknown

## Victims and Occupant Restraints – Section 7

**Motor Vehicle\* Occupants by Injury Severity & Age Group**

Figure 7.8

**Restraints Used**

Injury Severity	0 to 4	5 to 14	15 to 19	20 to 24	25 to 34	35 to 44	45 to 54	55 to 64	65 & older	Not Stated	Total
Not Injured	31	51	123	87	189	148	154	87	35	52	957
Minimal Injuries	3	2	3	1	8	10	5	8	1	4	45
Minor Injuries	0	1	7	4	10	12	11	2	0	0	47
Major (Hospital Admission)	0	0	0	1	3	0	0	1	0	0	5
Fatal	0	0	0	0	0	0	0	0	0	0	0
Injured - Extent Unknown	0	0	0	0	0	0	1	0	0	0	1
<b>Total</b>	<b>34</b>	<b>54</b>	<b>133</b>	<b>93</b>	<b>210</b>	<b>170</b>	<b>171</b>	<b>98</b>	<b>36</b>	<b>56</b>	<b>1055</b>

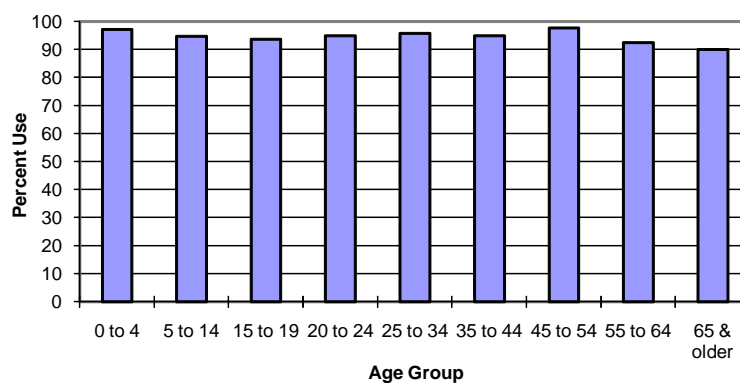
**Restraints Not Used**

Injury Severity	0 to 4	5 to 14	15 to 19	20 to 24	25 to 34	35 to 44	45 to 54	55 to 64	65 & older	Not Stated	Total
Not Injured	1	3	7	3	7	7	4	7	2	0	41
Minimal Injuries	0	0	0	0	2	0	0	0	1	1	4
Minor Injuries	0	0	1	0	0	2	0	1	0	0	4
Major (Hospital Admission)	0	0	0	1	0	0	0	0	0	0	1
Fatal	0	0	1	1	0	0	0	0	1	0	3
Injured - Extent Unknown	0	0	0	0	0	0	0	0	0	0	0
<b>Total</b>	<b>1</b>	<b>3</b>	<b>9</b>	<b>5</b>	<b>9</b>	<b>9</b>	<b>4</b>	<b>8</b>	<b>4</b>	<b>1</b>	<b>53</b>

\* Excludes occupants of motorcycles, mopeds, snowmobiles, all-terrain vehicles, and farm/construction equipment

**Victim Restraint Use Rate by Victim Age**

Figure 7.9



Pedestrians Injured or Killed by Age Group

Figure 8.1

	0 to 4	5 to 14	15 to 19	20 to 24	25 to 34	35 to 44	45 to 54	55 to 64	65 & older	Not Stated	Total	%
Injured	0	2	2	2	2	2	0	0	0	0	10	83.3
Killed	0	0	0	0	1	1	0	0	0	0	2	16.7
<b>Total</b>	<b>0</b>	<b>2</b>	<b>2</b>	<b>2</b>	<b>3</b>	<b>3</b>	<b>0</b>	<b>0</b>	<b>0</b>	<b>0</b>	<b>12</b>	
%	0.0	16.7	16.7	16.7	25.0	25.0	0.0	0.0	0.0	0.0	100.0	

Pedestrians Injured or Killed by Pedestrian Action and Age Group

Figure 8.2

Pedestrian Action	0 to 4	5 to 14	15 to 19	20 to 24	25 to 34	35 to 44	45 to 54	55 to 64	65 & older	Not Stated	Total	%
Crossing Intersection With Traffic Control, With Right-of-Way	0	0	1	1	0	0	0	0	0	0	2	16.7
Crossing Intersection With Traffic Control, Without Right-of-Way	0	0	0	0	0	0	0	0	0	0	0	0.0
Crossing Intersection - No Traffic Control	0	0	0	0	0	0	0	0	0	0	0	0.0
Crossing Roadway at Crosswalk	0	0	0	0	0	0	0	0	0	0	0	0.0
Crossing Roadway Not at Intersection	0	0	0	0	2	0	0	0	0	0	2	16.7
Walking Along Roadway Against Traffic	0	0	0	0	0	0	0	0	0	0	0	0.0
Walking Along Roadway With Traffic	0	0	0	1	1	1	0	0	0	0	2	16.7
On Sidewalk, Median, Safety Zone	0	0	0	0	0	0	0	0	0	0	0	0.0
Walking on Travelled Part of Roadway Against Traffic	0	0	0	0	0	0	0	0	0	0	0	0.0
Walking on Travelled Part of Roadway With Traffic	0	0	0	0	0	0	0	0	0	0	0	0.0
Coming from Behind Parked Vehicle/Object on Roadside	0	0	0	0	0	1	0	0	0	0	1	8.3
Coming from Behind Moving Vehicle	0	0	0	0	0	0	0	0	0	0	0	0.0
Running into Roadway	0	2	0	1	0	0	0	0	0	0	3	25.0
Getting On/Off School Bus	0	0	0	0	0	0	0	0	0	0	0	0.0
Getting On/Off Other Vehicles	0	0	0	0	0	1	0	0	0	0	1	8.3
Pushing Vehicle on Road	0	0	0	0	0	0	0	0	0	0	0	0.0
Working on Vehicle on Side of Road	0	0	0	0	0	0	0	0	0	0	0	0.0
Playing on Roadway	0	0	0	0	0	0	0	0	0	0	0	0.0
Working on Roadway	0	0	0	0	0	0	0	0	0	0	0	0.0
Lying on Road	0	0	0	0	0	0	0	0	0	0	0	0.0
Other	0	0	1	0	0	0	0	0	0	0	1	8.3
Unknown	0	0	0	0	0	0	0	0	0	0	0	0.0
<b>Total</b>	<b>0</b>	<b>2</b>	<b>2</b>	<b>2</b>	<b>3</b>	<b>3</b>	<b>0</b>	<b>0</b>	<b>0</b>	<b>0</b>	<b>12</b>	<b>100.0</b>

### Pedestrians Injured or Killed By Place of Occurrence and Injury Severity

Figure 8.3

Place of Occurrence	Killed	Injured	Total	%
Urban	0	9	9	75.0
Rural	2	1	3	25.0
Unspecified	0	0	0	0.0
<b>Total</b>	<b>2</b>	<b>10</b>	<b>12</b>	<b>100.0</b>

### Pedestrians Injured or Killed by Collision Site

Figure 8.4

Collision Site	Killed	Injured	Total	%
Non-Intersection	1	8	9	75.0
At Intersection of At Least Two Roadways	1	2	3	25.0
Intersection With Parking Lot/Driveway/Alley	0	0	0	0.0
Railroad Level Crossing	0	0	0	0.0
Bridge/Overpass/Viaduct	0	0	0	0.0
Tunnel or Underpass	0	0	0	0.0
Passing Lane/Climbing Lane	0	0	0	0.0
Other	0	0	0	0.0
Unspecified	0	0	0	0.0
<b>Total</b>	<b>2</b>	<b>10</b>	<b>12</b>	<b>100.0</b>

### Pedestrians Injured or Killed by Pedestrian Condition

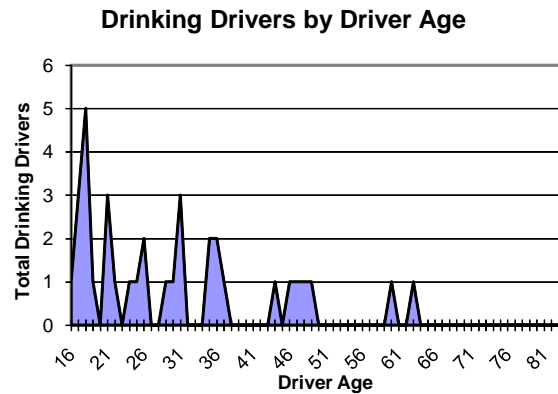
Figure 8.5

Pedestrian Condition	Killed	Injured	Total	%
Apparently Normal	1	7	8	66.7
Had Been Drinking	0	1	1	8.3
Impaired by Alcohol	0	0	0	0.0
Unknown	1	2	3	25.0
<b>Total</b>	<b>2</b>	<b>10</b>	<b>12</b>	<b>100.0</b>

## Drinking Drivers in Collisions by Driver Age and Gender

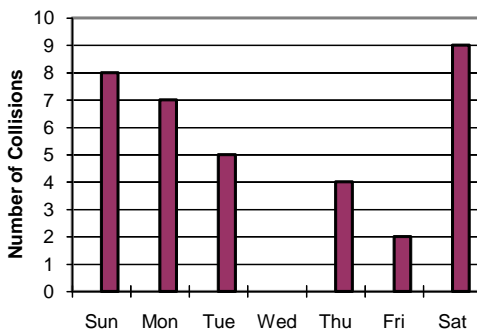
Figure 9.1

Driver Age	Male	Female	Not Stated	Total Drinking Drivers
Under 16	0	0	0	0
16	1	0	0	1
17	2	1	0	3
18	5	0	0	5
19	1	0	0	1
20	0	0	0	0
21 to 24	3	2	0	5
25 to 34	7	1	0	8
35 to 44	6	0	0	6
45 to 54	3	1	0	4
55 to 64	1	1	0	2
65 & Older	0	0	0	0
Not Stated	0	0	1	1
<b>Total</b>	<b>29</b>	<b>6</b>	<b>1</b>	<b>36</b>



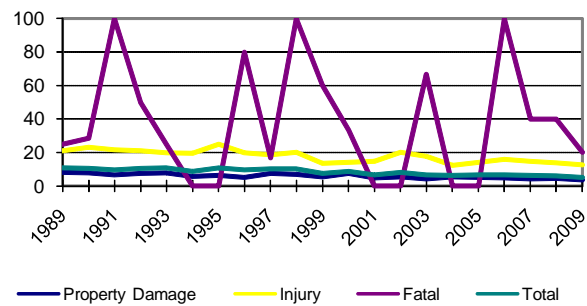
## Collisions Involving Alcohol by Day of Week

Figure 9.2



## Percentage of Collisions Involving Alcohol by Year and Severity

Figure 9.3



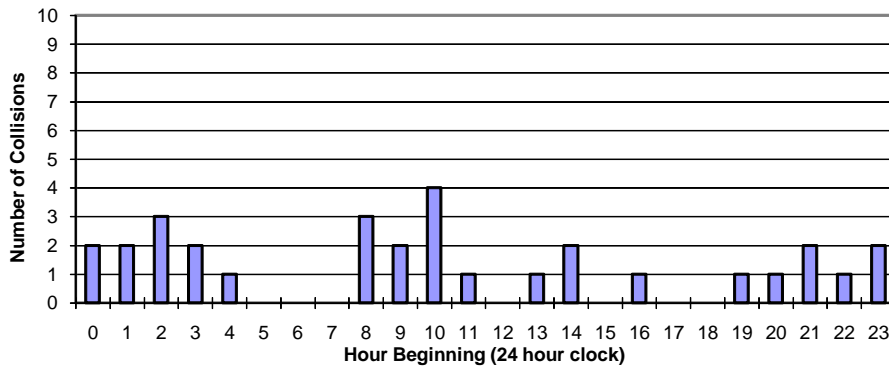
## Number of Collisions and Victims Involving Alcohol

Figure 9.4

Number of Collisions						Number of Victims				
	Property Damage	Personal Injury	Fatal	Total	% of Total Collisions	Injured	Killed	Total	% of Total Victims	
Year										
1999	29	21	3	53	7.7	54	5	59	20.8	
2000	41	18	1	60	8.8	30	3	33	17.6	
2001	27	21	0	48	6.7	36	0	36	17.3	
2002	36	31	0	67	8.3	59	0	59	25.1	
2003	29	23	2	54	6.6	35	2	37	21.1	
2004	36	14	0	50	6.3	21	0	21	13.6	
2005	33	18	0	51	6.5	25	0	25	13.3	
2006	27	14	2	43	6.6	19	2	21	18.4	
2007	27	17	2	46	6.2	31	2	33	20.5	
2008	34	16	2	52	6.0	24	2	26	14.6	
2009	21	13	1	35	5.1	18	1	19	12.3	
Average	31	19	1	51	6.8	32	2	34	17.7	

## Number of Alcohol Related Collisions by Time of Day

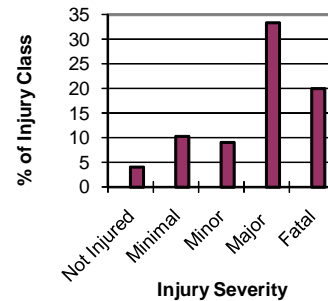
Figure 9.5



## Injury Severity by Alcohol Involvement

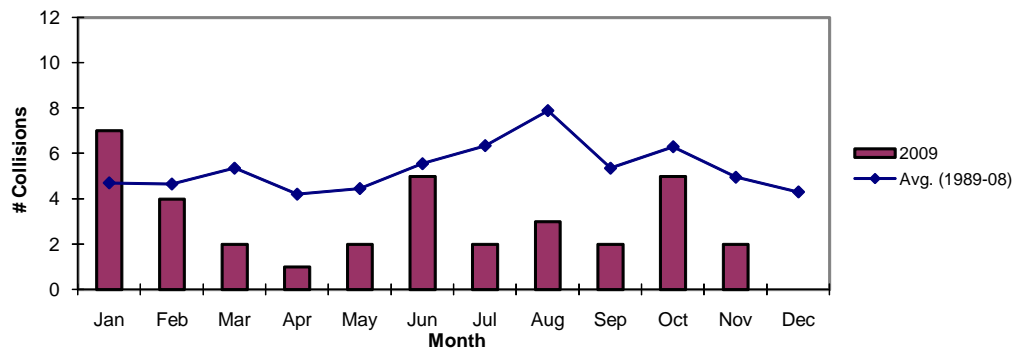
Figure 9.6

Injury Severity	Alcohol Involvement		Totals	% with Alcohol
	Yes	No		
Not Injured	54	1,282	1336	4.0
Minimal Injuries	7	61	68	10.3
Minor	6	60	66	9.1
Major	3	6	9	33.3
Fatal	1	4	5	20.0
Injured - Extent Unknown	2	4	6	33.3
<b>Total</b>	<b>73</b>	<b>1417</b>	<b>1490</b>	<b>4.9</b>



## Alcohol-Involved Collisions by Month

Figure 9.7



**Off-Road Vehicle Collisions by Month and Severity**

Figure 10.1

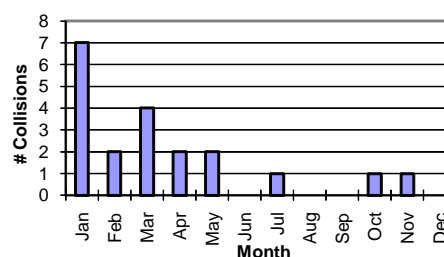
Month	Number of Collisions				Number of Victims	
	Property Damage	Personal Injury	Fatal	Total	Injured	Killed
January	3	4	0	7	6	0
February	1	1	0	2	1	0
March	4	0	0	4	0	0
April	0	2	0	2	2	0
May	0	2	0	2	2	0
June	0	0	0	0	0	0
July	0	1	0	1	1	0
August	0	0	0	0	0	0
September	0	0	0	0	0	0
October	0	1	0	1	2	0
November	0	1	0	1	1	0
December	0	0	0	0	0	0
<b>Total</b>	<b>8</b>	<b>12</b>	<b>0</b>	<b>20</b>	<b>15</b>	<b>0</b>

**Off-Road Vehicle Collisions by Vehicle Type**

Figure 10.2

	Snowmobile	ATV	Total
<b>Total Victims</b>	<b>8</b>	<b>4</b>	<b>12</b>
Killed	0	0	0
Injured	8	4	12
<b>Total Vehicles Involved</b>	<b>16</b>	<b>7</b>	<b>23</b>
Fatal	0	0	0
Injury	9	6	15
Property Damage	7	1	8

**Off-Road Vehicle Collisions by Month**



**Off-Road Vehicle Drivers in Collisions by Driver Age and Gender**

Figure 10.3

Age Group	Snowmobile			ATV			Total	%
	Male	Female	Unknown	Male	Female	Unknown		
0 to 4	0	0	0	0	0	0	0	0.0
5 to 14	3	2	0	1	0	0	6	26.1
15 to 19	3	1	0	3	0	0	7	30.4
20 to 24	0	0	0	0	0	0	0	0.0
25 to 34	1	0	0	2	0	0	3	13.0
35 to 44	2	0	0	0	0	0	2	8.7
45 to 54	1	0	0	0	0	0	1	4.3
55 to 64	1	0	0	1	0	0	2	8.7
65 & Over	0	0	0	0	0	0	0	0.0
Unknown	0	0	2	0	0	0	2	8.7
<b>Total</b>	<b>11</b>	<b>3</b>	<b>2</b>	<b>7</b>	<b>0</b>	<b>0</b>	<b>23</b>	<b>100.0</b>

**Off-Road Vehicle Collisions by Severity and Driver Condition**

Figure 10.4

Driver Condition	Property Damage	Personal Injury	Fatal	Total	%
Apparently Normal	4	4	0	8	36.4
Fatigue/Fell Asleep	0	0	0	0	0.0
Inexperience	1	4	0	5	22.7
Under Influence - Alcohol	1	5	0	6	27.3
Under Influence - Drugs	0	0	0	0	0.0
Sudden Illness, Lost Consciousness	0	0	0	0	0.0
Other Condition	0	0	0	0	0.0
Unknown	2	1	0	3	13.6
<b>Total</b>	<b>8</b>	<b>14</b>	<b>0</b>	<b>22</b>	<b>100.0</b>



### Off-Road Vehicle Collisions by Severity and Driver Action

Figure 10.5

Driver Action	Property Damage	Personal Injury	Fatal	Total	%
Driving Properly	0	1	0	1	4.3
Following Too Closely	0	1	0	1	4.3
Distracted, Inattentive	0	0	0	0	0.0
Driving Too Fast for Conditions	3	6	0	9	39.1
Improper Turning or Passing	0	0	0	0	0.0
Failed to Yield Right-of-Way	2	3	0	5	21.7
Disobeyed Traffic Control or Officer	1	1	0	2	8.7
Driving on Wrong Side of Road	0	1	0	1	4.3
Driving in Wrong Direction	0	0	0	0	0.0
Backing Unsafely	0	0	0	0	0.0
Lost Control	1	2	0	3	13.0
Other	0	0	0	0	0.0
Unknown	1	0	0	1	4.3
<b>Total</b>	<b>8</b>	<b>15</b>	<b>0</b>	<b>23</b>	<b>100.0</b>

### Off-Road Vehicle Occupants by Injury Severity and Helmet Use

Figure 10.6

Injury Severity	Helmet Worn	Helmet Not Worn	Unknown	Total	%
Not Injured	1	10	6	17	58.6
Minimal Injuries	1	5	0	6	20.7
Minor Injuries	1	1	1	3	10.3
Major (Hospital Admission)	0	2	0	2	6.9
Fatal	0	0	0	0	0.0
Injured - Extent Unknown	1	0	0	1	3.4
<b>Total</b>	<b>4</b>	<b>18</b>	<b>7</b>	<b>29</b>	<b>100.0</b>

## Collisions by Region, RCMP Detachment and Severity

Figure 11.1

### A - Inuvik Region

RCMP Detachment	Number of Collisions				Number of Victims	
	Property Damage	Personal Injury	Fatal	Total	Injured	Killed
Aklavik	2	5	0	7	6	0
Deline	1	1	0	2	3	0
Fort Good Hope	2	1	0	3	1	0
Fort McPherson	8	4	0	12	7	0
Holman	1	1	0	2	2	0
Inuvik	62	7	0	69	8	0
Norman Wells	6	0	0	6	0	0
Sachs Harbour	0	0	0	0	0	0
Tuktoyaktuk	6	1	1	8	3	1
Tulita	5	1	0	6	1	0
<b>Sub Total</b>						
<b>Inuvik Region</b>	<b>93</b>	<b>21</b>	<b>1</b>	<b>115</b>	<b>31</b>	<b>1</b>

### B - Fort Simpson Region

RCMP Detachment	Number of Collisions				Number of Victims	
	Property Damage	Personal Injury	Fatal	Total	Injured	Killed
Fort Liard	3	3	0	6	3	0
Fort Simpson	18	5	1	24	7	1
<b>Sub Total</b>						
<b>Fort Simpson Region</b>	<b>21</b>	<b>8</b>	<b>1</b>	<b>30</b>	<b>10</b>	<b>1</b>

### C - South Slave Region

RCMP Detachment	Number of Collisions				Number of Victims	
	Property Damage	Personal Injury	Fatal	Total	Injured	Killed
Hay River	81	11	1	93	14	1
Fort Providence	10	4	1	15	8	1
Fort Resolution	5	0	0	5	0	0
Fort Smith	33	7	0	40	11	0
Lutsel K'e	2	1	0	3	1	0
<b>Sub Total</b>						
<b>South Slave Region</b>	<b>131</b>	<b>23</b>	<b>2</b>	<b>156</b>	<b>34</b>	<b>2</b>

### D - North Slave Region

RCMP Detachment	Number of Collisions				Number of Victims	
	Property Damage	Personal Injury	Fatal	Total	Injured	Killed
Rae/Wha Ti	28	11	0	39	16	0
Yellowknife	308	40	1	349	58	1
<b>Sub Total</b>						
<b>North Slave Region</b>	<b>336</b>	<b>51</b>	<b>1</b>	<b>388</b>	<b>74</b>	<b>1</b>

<b>Total - All Regions</b>	<b>581</b>	<b>103</b>	<b>5</b>	<b>689</b>	<b>149</b>	<b>5</b>
----------------------------	------------	------------	----------	------------	------------	----------

## Geographic Distribution – Section 11

### Collision Rates by Region and RCMP Detachment

Figure 11.2

#### A - Inuvik Region

RCMP Detachment	Number of Collisions	Licensed Drivers [1]	Registered Vehicles [1]	Population (2009 estimate [2])	Collision Rates		
					Collisions/ 100 Licensed Drivers	Collisions/ 100 Registered Vehicles	Collisions/ 100 Population
Aklavik	7	209	148	645	3.35	4.73	1.09
Deline	2	174	117	565	1.15	1.71	0.35
Fort Good Hope	3	195	126	714	1.54	2.38	0.42
Fort McPherson	12	325	317	791	3.69	3.79	1.52
Ulukhaktok	2	52	109	451	3.85	1.83	0.44
Inuvik	69	1,816	2,038	3,586	3.80	3.39	1.92
Norman Wells	6	494	858	800	1.21	0.70	0.75
Sachs Harbour	0	35	41	136	0.00	0.00	0.00
Tuktoyaktuk	8	274	276	1,240	2.92	2.90	0.65
Tulita	6	158	160	566	3.80	3.75	1.06
<b>Sub Total Inuvik Region</b>	<b>115</b>	<b>3,732</b>	<b>4,190</b>	<b>9,494</b>	<b>3.08</b>	<b>2.74</b>	<b>1.21</b>

#### B - Fort Simpson Region

RCMP Detachment	Number of Collisions	Licensed Drivers [1]	Registered Vehicles [1]	Population (2009 estimate [2])	Collision Rates		
					Collisions/ 100 Licensed Drivers	Collisions/ 100 Registered Vehicles	Collisions/ 100 Population
Fort Liard	6	214	283	572	2.80	2.12	1.05
Fort Simpson	24	901	1,821	1,698	2.66	1.32	1.41
<b>Sub Total Fort Simpson Region</b>	<b>30</b>	<b>1,115</b>	<b>2,104</b>	<b>2,270</b>	<b>2.69</b>	<b>1.43</b>	<b>1.32</b>

#### C - South Slave Region

RCMP Detachment	Number of Collisions	Licensed Drivers [1]	Registered Vehicles [1]	Population (2009 estimate [2])	Collision Rates		
					Collisions/ 100 Licensed Drivers	Collisions/ 100 Registered Vehicles	Collisions/ 100 Population
Hay River	93	2,806	4,994	4,104	3.31	1.86	2.27
Fort Providence	15	250	399	759	6.00	3.76	1.98
Fort Resolution	5	245	310	506	2.04	1.61	0.99
Fort Smith	40	1,513	2,798	2,486	2.64	1.43	1.61
Lutsel K'e	3	78	60	312	3.85	5.00	0.96
<b>Sub Total South Slave Region</b>	<b>156</b>	<b>4,892</b>	<b>8,561</b>	<b>8,167</b>	<b>3.19</b>	<b>1.82</b>	<b>1.91</b>

#### D - North Slave Region

RCMP Detachment	Number of Collisions	Licensed Drivers [1]	Registered Vehicles [1]	Population (2009 estimate [2])	Collision Rates		
					Collisions/ 100 Licensed Drivers	Collisions/ 100 Registered Vehicles	Collisions/ 100 Population
Behchoko/Whati	39	1,016	981	2,955	3.84	3.98	1.32
Yellowknife	349	13,694	17,200	19,711	2.55	2.03	1.77
<b>Sub Total North Slave Region</b>	<b>388</b>	<b>14,710</b>	<b>18,181</b>	<b>22,666</b>	<b>2.64</b>	<b>2.13</b>	<b>1.71</b>

<b>Total - All Regions</b>	<b>689</b>	<b>24,449</b>	<b>33,036</b>	<b>43,439</b>	<b>2.82</b>	<b>2.09</b>	<b>1.59</b>
----------------------------	------------	---------------	---------------	---------------	-------------	-------------	-------------

[1] Number of registered vehicles and licensed drivers are as of December 31, 2009.

[2] 2009 population from NWT Bureau of Statistics July 1 estimate published in 'Quarterly Report', March 2010.

## Geographic Distribution – Section 11

Collisions on the NWT Highway System

Figure 11.3

Highway #1 (Mackenzie)	On Km	Collision Date	Collision Severity	Collision Configuration	# Persons Injured	# Persons Killed
	4.0	10 Jan 2009	Property Damage	Collision with Other Animal	0	0
	4.0	22 Jan 2009	Property Damage	Collision with Other Animal	0	0
	8.0	26 Oct 2009	Property Damage	Single Vehicle Rollover	0	0
	30.0	31 Oct 2009	Property Damage	Single Vehicle Rollover	0	0
	68.0	14 Feb 2009	Property Damage	Ran Off Road - Right	0	0
	70.0	22 Nov 2009	Injury	Single Vehicle Rollover	2	0
	75.8	5 Feb 2009	Property Damage	Single Vehicle Rollover	0	0
	83.8	30 Mar 2009	Injury	Single Vehicle Rollover	1	0
	105.0	6 Mar 2009	Property Damage	Sideswipe - Opposite Direction	0	0
	112.8	26 Dec 2009	Injury	Single Vehicle Rollover	1	0
	120.0	28 Jan 2009	Property Damage	Ran Off Road - Right	0	0
	148.0	2 Apr 2009	Injury	Single Vehicle Rollover	2	0
	172.0	14 Feb 2009	Property Damage	Ran Off Road - Left	0	0
	193.0	8 Mar 2009	Property Damage	Ran Off Road - Right	0	0
	348.0	31 Oct 2009	Injury	Single Vehicle Rollover	1	0
	396.0	25 Jul 2009	Injury	Single Vehicle Rollover	2	0
	399.0	22 Jul 2009	Property Damage	Single Vehicle Rollover	0	0
	400.0	4 Apr 2009	Property Damage	Sideswipe - Opposite Direction	0	0
	422.0	5 Jan 2009	Property Damage	Single Vehicle Rollover	0	0
	467.8	1 Feb 2009	Property Damage	Collision with Other Animal	0	0
	468.3	3 Feb 2009	Fatal	Collision with Pedestrian	0	1
	471.6	10 Feb 2009	Property Damage	Collision with Fixed Object	0	0
	590.0	20 Jun 2009	Injury	Single Vehicle Rollover	1	0
	665.0	9 Mar 2009	Injury	Single Vehicle Rollover	2	0
	690.0	28 Jan 2009	Property Damage	Ran Off Road - Right	0	0

Summary Highway #1	Property Damage Collisions	Personal Injury Collisions	Fatal Collisions	Total Collisions	Persons Injured	Persons Killed
	16	8	1	25	12	1

Highway #2 (Hay River)	On Km	Collision Date	Collision Severity	Collision Configuration	# Persons Injured	# Persons Killed
	3.0	22 Jan 2009	Property Damage	Single Vehicle Rollover	0	0
	5.0	24 Dec 2009	Property Damage	Single Vehicle Rollover	0	0
	15.0	4 Jul 2009	Property Damage	Collision with Other Animal	0	0
	25.0	25 Dec 2009	Property Damage	Single Vehicle Rollover	0	0
	33.0	31 Oct 2009	Fatal	Collision with Pedestrian	0	1
	37.0	21 Oct 2009	Injury	Right Angle	1	0
	38.8	9 Dec 2009	Property Damage	Rear End	0	0
	38.8	11 Dec 2009	Property Damage	Collision with Fixed Object	0	0
	39.2	19 Jan 2009	Property Damage	Rear End	0	0
	39.5	27 Feb 2009	Injury	Sideswipe - Opposite Direction	2	0
	39.5	4 Oct 2009	Property Damage	Rear End	0	0
	40.0	25 Oct 2009	Property Damage	Single Vehicle Rollover	0	0
	41.0	7 Mar 2009	Property Damage	Sideswipe - Same Direction	0	0
	42.2	5 Feb 2009	Property Damage	Collision with Moving Object	0	0
	42.5	8 Mar 2009	Injury	Single Vehicle Rollover	1	0
	43.0	23 Jul 2009	Property Damage	Rear End	0	0
	45.5	16 Jan 2009	Injury	Single Vehicle Rollover	1	0
	46.5	12 Oct 2009	Property Damage	Single Vehicle Rollover	0	0

Summary Highway #2	Property Damage Collisions	Personal Injury Collisions	Fatal Collisions	Total Collisions	Persons Injured	Persons Killed
	13	4	1	18	5	1

## Geographic Distribution – Section 11

Highway #3 (Yellowknife)	On Km	Collision Date	Collision Severity	Collision Configuration	# Persons Injured	# Persons Killed
	30.0	13 Jun 2009	Property Damage	Single Vehicle Rollover	0	0
	43.0	1 Mar 2009	Iniuriv	Collision with Bison	2	0
	44.0	1 Nov 2009	Property Damage	Collision with Bison	0	0
	58.0	18 Dec 2009	Iniuriv	Sideswipe - Opposite Direction	1	0
	60.0	23 Dec 2009	Property Damage	Single Vehicle Rollover	0	0
	70.0	15 Aug 2009	Property Damage	Collision with Bison	0	0
	92.0	31 Jan 2009	Property Damage	Rear End	0	0
	110.0	16 Mar 2009	Iniuriv	Single Vehicle Rollover	1	0
	119.0	2 Oct 2009	Fatal	Collision with Bison	2	1
	134.0	2 Sep 2009	Iniuriv	Single Vehicle Rollover	1	0
	136.0	13 Oct 2009	Property Damage	Collision with Bison	0	0
	140.0	6 Nov 2009	Property Damage	Collision with Bison	0	0
	186.0	19 Oct 2009	Property Damage	Collision with Bison	0	0
	235.0	18 Jul 2009	Iniuriv	Collision with Bison	1	0
	239.5	15 Jan 2009	Property Damage	Single Vehicle Rollover	0	0
	243.9	15 Feb 2009	Property Damage	Single Vehicle Rollover	0	0
	244.0	5 Nov 2009	Property Damage	Collision with Bison	0	0
	245.0	11 Nov 2009	Property Damage	Collision with Bison	0	0
	260.0	15 Dec 2009	Iniuriv	Collision with Bison	1	0
	264.8	7 Nov 2009	Iniuriv	Ran Off Road - Right	4	0
	266.0	24 Oct 2009	Iniuriv	Single Vehicle Rollover	1	0
	277.0	13 Nov 2009	Iniuriv	Collision with Bison	1	0
	283.0	28 Jun 2009	Iniuriv	Single Vehicle Rollover	2	0
	289.0	15 Feb 2009	Property Damage	Ran Off Road - Right	0	0
	290.0	20 Mar 2009	Property Damage	Ran Off Road - Left	0	0
	295.0	19 Aug 2009	Property Damage	Single Vehicle Rollover	0	0
	299.0	27 Nov 2009	Property Damage	Collision with Bison	0	0
	322.0	UU Sep 2009	Property Damage	Single Vehicle Rollover	0	0
	329.0	11 Aug 2009	Property Damage	Ran Off Road - Left	0	0
	333.0	9 Mar 2009	Iniuriv	Right Angle	1	0
	334.2	18 Jul 2009	Iniuriv	Right Angle	1	0
	335.7	4 Jul 2009	Iniuriv	Ran Off Road - Left	1	0
	338.0	12 Mar 2009	Property Damage	Single Vehicle Rollover	0	0
	338.0	27 Dec 2009	Property Damage	Ran Off Road - Right	0	0
	338.2	21 Dec 2009	Property Damage	Ran Off Road - Right	0	0
	338.2	21 Dec 2009	Iniuriv	Rear End	2	0
	338.8	14 Jan 2009	Property Damage	Rear End	0	0
Summary Highway #3	Property Damage Collisions	Personal Iniuriv Collisions	Fatal Collisions	Total Collisions	Persons Injured	Persons Killed
	22	14	1	37	22	1

## Geographic Distribution – Section 11

Highway #4 (Inuvik Trail)	On Km	Collision Date	Collision Severity	Collision Configuration	# Persons Injured	# Persons Killed
	0.0	23 Jan 2009	Property Damage	Left Turn Across Path	0	0
	0.0	12 Jun 2009	Injury	Left Turn Across Path	2	0
	0.0	21 Nov 2009	Property Damage	Single Vehicle Rollover	0	0
	2.0	12 Mar 2009	Property Damage	Collision with Fixed Object	0	0
	13.0	24 Feb 2009	Property Damage	Ran Off Road - Right	0	0
	17.5	25 Dec 2009	Property Damage	Single Vehicle Rollover	0	0
	20.0	4 Jun 2009	Injury	Ran Off Road - Right	2	0
	24.0	18 Nov 2009	Property Damage	Ran Off Road - Left	0	0
	34.0	27 Sep 2009	Property Damage	Collision with Fixed Object	0	0
	44.0	30 Jul 2009	Property Damage	Ran Off Road - Left	0	0

Summary Highway #4	Property Damage Collisions	Personal Injury Collisions	Fatal Collisions	Total Collisions	Persons Injured	Persons Killed
	8	2	0	10	4	0

Highway #5 (Fort Smith Highway)	On Km	Collision Date	Collision Severity	Collision Configuration	# Persons Injured	# Persons Killed
	30.0	5 Dec 2009	Property Damage	Single Vehicle Rollover	0	0
	41.0	14 Aug 2009	Injury	Single Vehicle Rollover	1	0
	45.0	20 Feb 2009	Property Damage	Sideswipe - Opposite Direction	0	0
	54.8	22 Jun 2009	Injury	Collision with Pedestrian	1	0
	100.0	13 Mar 2009	Injury	Single Vehicle Rollover	1	0
	114.0	7 Oct 2009	Property Damage	Ran Off Road - Right	0	0
	122.0	1 Sep 2009	Property Damage	Collision with Bison	0	0
	135.0	7 Nov 2009	Property Damage	Single Vehicle Rollover	0	0
	160.0	4 Oct 2009	Property Damage	Ran Off Road - Right	0	0
	160.0	22 Oct 2009	Property Damage	Collision with Other Animal	0	0
	162.0	1 Nov 2009	Injury	Single Vehicle Rollover	4	0
	166.0	2 Oct 2009	Property Damage	Collision with Bison	0	0
	238.0	18 Aug 2009	Property Damage	Collision with Bison	0	0
	248.3	30 Oct 2009	Injury	Single Vehicle Rollover	1	0
	266.0	31 Oct 2009	Property Damage	Ran Off Road - Left	0	0

Summary Highway #5	Property Damage Collisions	Personal Injury Collisions	Fatal Collisions	Total Collisions	Persons Injured	Persons Killed
	10	5	0	15	8	0

Highway #6 (Fort Resolution Highway)	On Km	Collision Date	Collision Severity	Collision Configuration	# Persons Injured	# Persons Killed
	37.0	30 May 2009	Property Damage	Single Vehicle Rollover	0	0

Summary Highway #6	Property Damage Collisions	Personal Injury Collisions	Fatal Collisions	Total Collisions	Persons Injured	Persons Killed
	1	0	0	1	0	0

## Geographic Distribution – Section 11

Highway #7 (Liard Highway)	On Km	Collision Date	Collision Severity	Collision Configuration	# Persons Injured	# Persons Killed
	27.6	1 Jan 2009	Injury	Ran Off Road - Right	1	0
	46.6	10 Aug 2009	Injury	Ran Off Road - Right	1	0
	188.0	29 Jun 2009	Property Damage	Single Vehicle Rollover	0	0

Summary Highway #7	Property Damage Collisions	Personal Injury Collisions	Fatal Collisions	Total Collisions	Persons Injured	Persons Killed
	1	2	0	3	2	0

Highway #8 (Dempster Highway)	On Km	Collision Date	Collision Severity	Collision Configuration	# Persons Injured	# Persons Killed
	29.0	25 Jul 2009	Injury	Single Vehicle Rollover	1	0
	59.0	15 Dec 2009	Property Damage	Ran Off Road - Right	0	0
	88.4	19 Aug 2009	Property Damage	Ran Off Road - Left	0	0
	114.0	5 Jun 2009	Property Damage	Single Vehicle Rollover	0	0
	121.4	21 Jun 2009	Injury	Single Vehicle Rollover	2	0
	124.4	6 Jun 2009	Injury	Single Vehicle Rollover	3	0
	140.6	20 Mar 2009	Injury	Single Vehicle Rollover	1	0
	148.0	21 Mar 2009	Property Damage	Single Vehicle Rollover	0	0
	169.0	9 Mar 2009	Property Damage	Single Vehicle Rollover	0	0
	180.0	17 Oct 2009	Property Damage	Ran Off Road - Right	0	0
	261.3	2 Aug 2009	Injury	Single Vehicle Rollover	2	0
	261.3	3 Sep 2009	Property Damage	Ran Off Road - Left	0	0
	272.0	7 Jun 2009	Property Damage	Single Vehicle Rollover	0	0
	272.5	27 Mar 2009	Property Damage	Collision with Parked Vehicle	0	0

Summary Highway #8	Property Damage Collisions	Personal Injury Collisions	Fatal Collisions	Total Collisions	Persons Injured	Persons Killed
	9	5	0	14	9	0

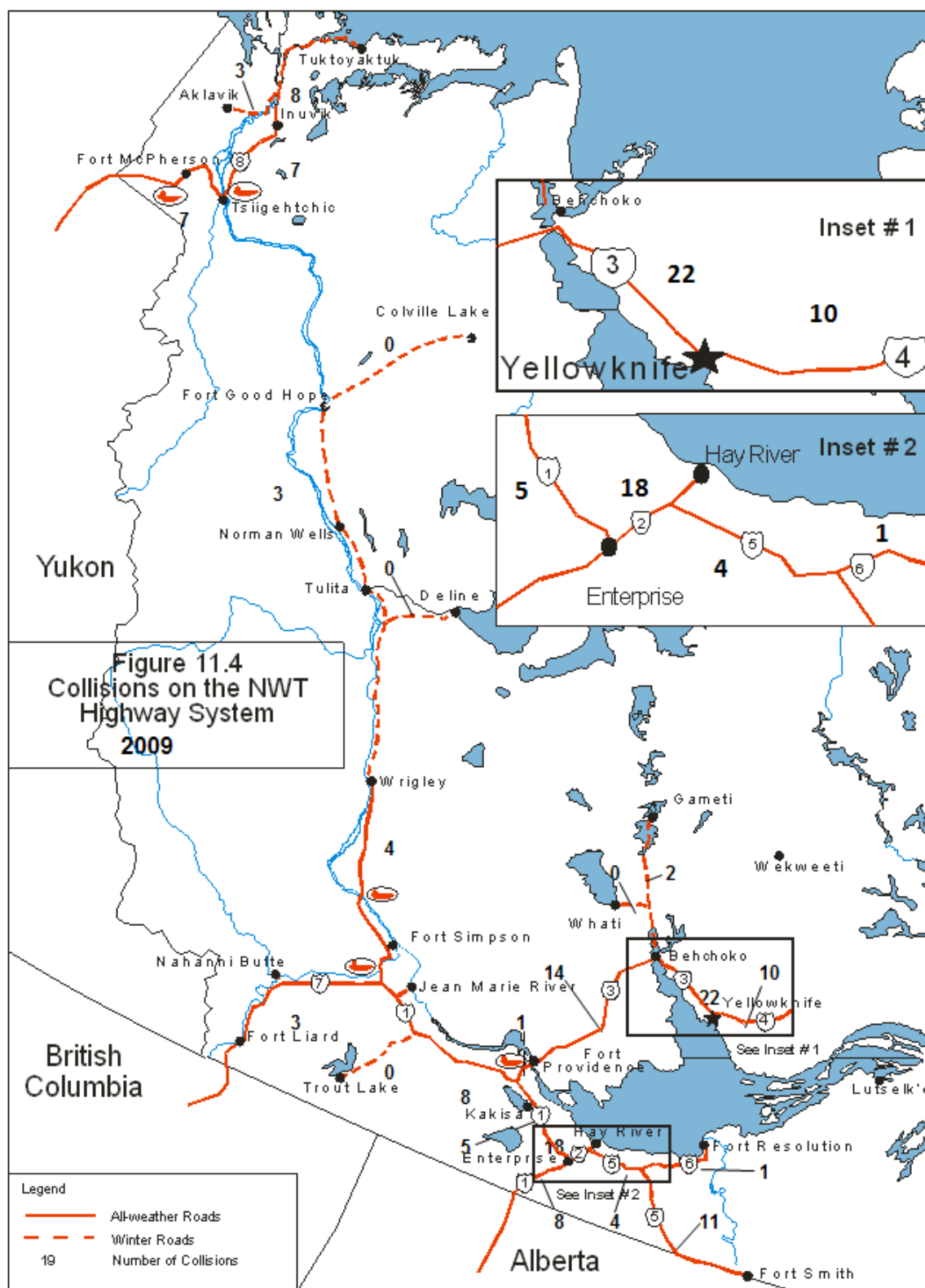
## Geographic Distribution – Section 11

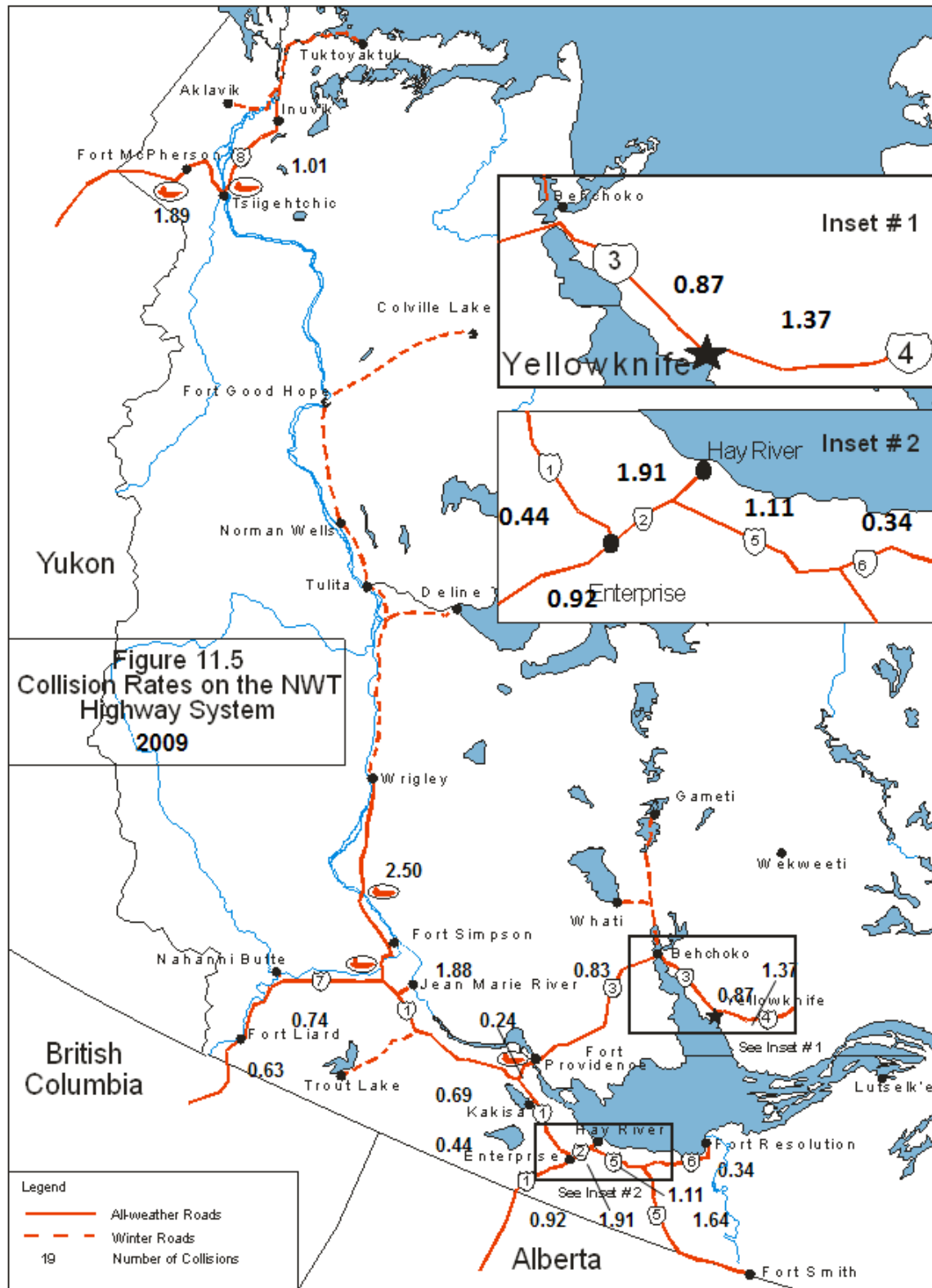
Access and Winter Roads	Collision Date	Collision Severity	Collision Configuration	# Persons Injured	# Persons Killed
Canol Road	14 Jan 2009	Property Damage	Collision with Fixed Object	0	0
Dettah Access Road	20 Sep 2009	Property Damage	Single Vehicle Rollover	0	0
Fort Providence Access Road	27 Aug 2009	Injury	Ran Off Road - Left	2	0
Hav River Reserve Access Road	25 Mar 2009	Property Damage	Right Angle	0	0
Hav River Reserve Access Road	19 Jun 2009	Property Damage	Rear End	0	0
Hav River Reserve Access Road	29 Jun 2009	Property Damage	Sideswipe - Opposite Direction	0	0
Hav River Reserve Access Road	7 Jul 2009	Property Damage	Ran Off Road - Right	0	0
Hav River Reserve Access Road	29 Oct 2009	Property Damage	Ran Off Road - Left	0	0
Rae Access Road	5 Mar 2009	Property Damage	Ran Off Road - Left	0	0
Rae Access Road	24 Aug 2009	Injury	Ran Off Road - Right	1	0
Rae Access Road	15 Oct 2009	Injury	Collision with Fixed Object	2	0
Yellowknife Access Road	15 Jan 2009	Property Damage	Right Angle	0	0
Yellowknife Access Road	1 Jul 2009	Property Damage	Sideswipe - Same Direction	0	0
Aklavik Winter Access Road	4 Mar 2009	Injury	Collision with Fixed Object	2	0
Aklavik Winter Access Road	19 Apr 2009	Property Damage	Single Vehicle Rollover	0	0
Aklavik Winter Access Road	19 Apr 2009	Property Damage	Head-on	0	0
Inuvik-tuktoavaktuk Winter Road	11 Jan 2009	Property Damage	Collision with Fixed Object	0	0
Inuvik-tuktoavaktuk Winter Road	13 Mar 2009	Property Damage	Single Vehicle Rollover	0	0
Inuvik-tuktoavaktuk Winter Road	23 Mar 2009	Property Damage	Head-on	0	0
Inuvik-tuktoavaktuk Winter Road	29 Mar 2009	Injury	Collision with Fixed Object	2	0
Inuvik-tuktoavaktuk Winter Road	31 Mar 2009	Property Damage	Sideswipe - Opposite Direction	0	0
Inuvik-tuktoavaktuk Winter Road	11 Apr 2009	Injury	Single Vehicle Rollover	1	0
Inuvik-tuktoavaktuk Winter Road	11 Apr 2009	Property Damage	Ran Off Road - Right	0	0
Inuvik-tuktoavaktuk Winter Road	21 Apr 2009	Property Damage	Ran Off Road - Right	0	0
Mackenzie Highway Winter Road	23 Jan 2009	Property Damage	Collision with Fixed Object	0	0
Mackenzie Highway Winter Road	20 Mar 2009	Property Damage	Single Vehicle Rollover	0	0
Mackenzie Highway Winter Road	24 Mar 2009	Property Damage	Ran Off Road - Left	0	0
Rae Lakes Winter Access Road	20 Mar 2009	Property Damage	Sideswipe - Opposite Direction	0	0
Rae Lakes Winter Access Road	6 Apr 2009	Property Damage	Sideswipe - Opposite Direction	0	0

Summary Access and Winter Roads	Property Damage Collisions	Personal Injury Collisions	Fatal Collisions	Total Collisions	Persons Injured	Persons Killed
	23	6	0	29	10	0

Summary All NWT Highways	Property Damage Collisions	Personal Injury Collisions	Fatal Collisions	Total Collisions	Persons Injured	Persons Killed
	103	46	3	152	72	3







Casualty Rates by Canadian Jurisdiction - 2008 [1]

Figure 12.1

Province/ Territory	Casualty Rates					
	Per 100,000 Population		Per Billion Vehicle Kilometres [2]		Per 100,000 Licensed Drivers	
	Fatalities	Injuries	Fatalities	Injuries	Fatalities	Injuries
<b>Canada</b>	<b>8.5</b>	<b>664.7</b>	<b>8.8</b>	<b>681</b>	<b>12.6</b>	<b>979.8</b>
Newfoundland & Labrador	7.2	516.6	9.7	699	10.8	779.2
Prince Edward Island	20.3	681.1	22.6	760	28.8	964.6
Nova Scotia	9.6	546.2	9.4	533	13.7	776.5
New Brunswick	9.4	562.4	9.6	573	13.4	800.0
Quebec	8.6	740.9	9.0	778	13.7	1,182.9
Ontario	6.5	588.7	6.6	600	9.3	842.9
Manitoba	8.5	796.3	9.5	891	14.3	1,343.0
Saskatchewan	12.7	745.2	11.0	647	18.8	1,107.4
Alberta	12.1	757.3	9.9	622	16.2	1,015.1
British Columbia	10.2	694.3	12.4	842	15.0	1,019.2
Yukon	16.0	679.3	9.4	397	21.4	907.0
<b>Northwest Territories</b>	<b>11.6</b>	<b>399.7</b>	<b>11.8</b>	<b>409</b>	<b>20.6</b>	<b>711.3</b>
Nunavut	3.4	222.6	33.7	2,222	N/A	N/A

[1] Canadian Motor Vehicle Traffic Collision Statistics: 2008. Published by Transport Canada.

[2] Statistics Canada, Canadian Vehicle Survey. Catalogue No. 53-223-XIE.

# Appendix A1 – Collision Report Form Side I

Northwest Territories ACCIDENT REPORT				02. POLICE DETACHMENT				03. CASE NUMBER				PAGE OF			
1. In Community of (Give Park, Special Area Etc.) 2. Near Or Highway Number Or Street/Road/Avenue At Intersection With Of Highway Number Or Street/Road/Avenue If Not At Intersection metres of Street, Highway, Town, Etc. Special Reference If Location Can Be Described More Precisely, Enter Here				31. DIRECTION OF TRAVEL 1. 8 2. 7 3. 6 4. 5 5. Parked 6. Other U. Unknown				REPORT TYPE 1. Original 2. Continuation 3. Amendment 4. Correction 5. Scene Attended 1. Yes 2. No 10. COLLISION SEVERITY 1. Fatal 2. Injury 3. Property Damage 4. Other U. Unknown				REPORT STATUS 1. Complete 2. Incomplete 09. HOUR 30-23 UU. Unknown 05. - 08. DATE OF COLLISION 11. NO. VEHICLES 11. NO. KILLED 12. NO. INJURED			
14. 01. H&M Moving Object 02. H&M Stationary Object 03. Off Road Left 04. Off Road Right 05. Rollover on Roadway 06. Other Single Vehicle 21. Rear End 22. Sideswipe Same Direction 23. Passing - Left Turn 24. Passing - Right Turn 25. Other Multi-Vehicle Same Direction 31. Head-On				32. Sideswipe Opposite Direction 33. Left Turn Across Path 34. Right Turn Including Conflict 35. Right Turn Opposite Direction 41. Hit Parked Vehicle 42. Other Collision Type UU. Unknown Collision Type				43. FIRST IMPACT LOCATION 1. 11 2. 12 3. 13 4. 14 5. 15 6. 16 7. 17 8. 18 9. 19 10. 20 15. Right Rear Two-Thirds 16. Entire Right Side 17. Right Side Unspecified 18. Undercarriage 19. Interior 20. Attachment 21. Left Front Two-Thirds 22. Left Side - Unspecified 23. Right Front Two-Thirds 24. Right Side - Unspecified				44. DAMAGE SEVERITY 1. None 2. Minimal 3. Moderate 4. Severe 5. Demolished Q. Other UU. Unknown			
29. VEH. SEQUENCE # 99. Ped. UU. Unknown 30. TOTAL OCCUPANTS LAST NAME FIRST NAME(S) ADDRESS DATE OF BIRTH SEX HOME PHONE WORK PHONE DRIVER'S LICENCE # 59. PROV. STATE 67. Years Licensed 58. STATUS 1. Valid 2. Incorrect 3. Not Licensed 4. Revoked/Suspended 5. Expired Q. Other N. Not Applicable U. Unknown				29. VEH. SEQUENCE # 99. Ped. UU. Unknown 30. TOTAL OCCUPANTS LAST NAME FIRST NAME(S) ADDRESS DATE OF BIRTH SEX HOME PHONE WORK PHONE DRIVER'S LICENCE # 59. PROV. STATE 67. Years Licensed 58. STATUS 1. Valid 2. Incorrect 3. Not Licensed 4. Revoked/Suspended 5. Expired Q. Other N. Not Applicable U. Unknown				61. POSITION 11 12 13 21 22 23 31 32 33 62. EJECTION 1. Not Ejected 2. Partially Ejected 3. Fully Ejected 4. N/A Vehicle Type 5. Other U. Unknown 63. EJECTION LOCATION 1. Windshield 2. Adjacent Side Window 3. Opposite Side Window 4. Adjacent Side Door 5. Opposite Side Door 6. Rear Window or Gate 7. Sun Roof 8. Opened Convertible 9. Pedestrian 10. Not Ejected 11. Other U. Unknown				64. MEDICAL TREATMENT REQUIRED 1. Not Injured/Unknown if Injured 2. Minimal 3. Death - Natural Causes 4. Death - Extent Unknown 5. Major 65. SAFETY EQUIPMENT 01. No Safety Device Used 02. Lap Belt Only Used 03. Shoulder Belt Only Used 04. Lap/Shoulder Belt Used 05. Front-Facing Child Restraint in Use 06. Rear-Facing Child Restraint in Use 07. Booster Seat 08. Child Restraint in Use - Unspecified 09. Helmet Worn 10. Reflective Clothing Worn 11. Helmet & Reflective Clothing Worn 12. Other Device Used 13. No Safety Device Fitted UU. Unknown			
34. YEAR 35. MAKE/MODEL LICENCE PLATE # EXP 32. PROV. VIN U. Unknown LAST NAME FIRST NAME(S) ADDRESS SAME AS ABOVE HOME PHONE WORK PHONE INSURANCE COMPANY ADDRESS POLICY NUMBER EXPIRY DATE				34. YEAR 35. MAKE/MODEL LICENCE PLATE # EXP 32. PROV. VIN U. Unknown LAST NAME FIRST NAME(S) ADDRESS SAME AS ABOVE HOME PHONE WORK PHONE INSURANCE COMPANY ADDRESS POLICY NUMBER EXPIRY DATE				NAMES AND ADDRESSES (IF DECEASED ALSO INCLUDE DATE & TIME OF DEATH) 66. PROPER USE 1. Used Correctly 2. Used Incorrectly 3. No Safety Device Fitted 4. No Safety Device Used 5. Other UU. Unknown 67. AIR BAG DEPLOYED 1. No Air Bag Fitted 2. Air Bag Fitted, No Deployment 3. Air Bag Fitted, Deployed 4. Air Bag Fitted, Deployment Unknown 5. Not Applicable Vehicle Type 6. Other UU. Unknown							
20. Veh. Seq. # 54. Person Seq. # 55. Sex F. Female M. Male U. Unk. 56. Age 00 < 1 Yr. UU. Unk. 61. Position 62. Ejection Location 63. Ejection Location 64. Medical Treatment Required 65. Safety Equipment 66. Proper Use 67. Air Bag Deployed															
Officer's Signature Name Rank Date Reviewed				Reviewed By:											

# Appendix A2 – Collision Report Form Side II

<b>16. ROADWAY CONFIGURATION</b> 1. Non-Intersection 2. Intersection 2 Roads 3. Intersection With Parking Lot/Driveway/Alley 4. Railroad Level Crossing 5. Bridge, Overpass, Viaduct 6. Tunnel Or Underpass 7. Other 8. Unknown	<b>24. ROAD SURFACE</b> 1. Dry, Normal 2. Wet 3. Snow (Fresh/Loose) 4. Slush, Wet Snow 5. Ice 6. Sandy/Gravel/Dirt 7. Muddy 8. Oil 9. Flooded 10. Other 11. Unknown	<b>31. VEHICLE TYPE</b> 11. Urban Transit Bus 12. Inter-city Bus 13. Motorcycle 14. Motorcycle - Speed Limited 15. Off-Road Vehicle 16. Bicycle 17. Purpose-Built Motor Home 18. Farm Equipment 19. Construction Equipment 20. Snowmobile 21. Other UU, Unknown	<b>41. VEHICLE MANOEUVRE</b> 01. Going Straight 02. Turning Left 03. Turning Right 04. Making U-Turn 05. Changing Lanes 06. Merging 07. Reversing 08. Overtaking 09. Negotiating Curve 10. Slowing, Stopping 11. Starting In Traffic 12. Leaving Roadside 13. Stopped/Parked Legally 14. Stopped/Parked Illegally 15. Swerving To Avoid Collision 16. Run-Away Or Roll Away Vehicle 21. Unspecified Manoeuvre 22. Other UU, Unknown	<b>48. DRIVER ACTION</b> 21. Following Too Closely 22. Distracted, Inattentive 23. Driving Too Fast For Conditions 24. Improper Turning Or Passing 25. Fail To Yield Right-Of-Way 26. Disobeyed Traffic Control Device/ Police Officer 27. Driving On Wrong Side Of Road 28. Backing Unsafely 29. Lost Control 30. Driving Properly 31. Other UU, Unknown	<b>68. PEDESTRIAN ACTION</b> 01. Crossing Intersection With ROW 02. Crossing Intersection Without ROW 03. In Crosswalk 04. Crossing Roadway At Midblock 05. Walking On Roadway Against Traffic 06. Walking On Roadway With Traffic 07. On Sidewalk, Median, Safety Zone 08. Coming From Behind Parked Vehicle/Object 09. Coming From Behind Moving Vehicle 10. Running Into Roadway 11. Getting On/Off School Bus 12. Pushing Vehicle 13. Working On Vehicle 14. Playing On Road 15. Working On Road 16. Lying On Road 17. Not a Pedestrian 18. Other UU, Unknown	<b>INDEPENDENT WITNESSES</b> Last Name First Name Address Home Phone Work Phone Last Name First Name Address Home Phone Work Phone
<b>17. WEATHER CONDITION</b> 1. Clear and/or Sunny 2. Overcast, Cloudy - No Precipitation 3. Raining 4. Snowing, Not Including Drifting Snow 5. Freez. Rain, Sleet, Hail 6. Visibility Limitation (Eg. Fog, Smoke, Dust, Mist) 7. Strong Wind 8. Other 9. Unknown	<b>25. ROAD CONDITION</b> 1. Good 2. Potholes, Bumps, Ruts 3. Under Construction, Repair 4. Uneven 5. Worn 6. Obscured/Faded Markings 7. Other 8. Unknown	<b>36. VEHICLE USE</b> 01. Taxi 02. School Bus 03. Other Bus 04. Military 05. Police Cruiser 06. Ambulance 07. Hearse 08. Tow Truck 09. Delivery Vehicle 10. Road Maintenance 11. Utilities Maintenance 12. Fire Response 13. No Special Use 14. Other UU, Unknown	<b>44 - 46. VEHICLE EVENTS</b> NON-COLLISION EVENTS: 01. Skidded Or Spun On Roadway 02. Ran Off Road 03. Overturned, Rollover 04. Jackknife Or Trailer Swing 05. Fire Or Explosion 06. Load Spill 07. Load Shift 08. Submersion 09. Other Non-Collision Event HIT MOVING OBJECTS: 10. Hit Moving Motor Vehicle 11. Hit Pedestrian 12. Hit Bicyclist 13. Hit Animal 14. Hit Train 15. Hit Another Moving Object HIT NON-MOVING OBJECTS: 16. Hit Parked Vehicle 17. Hit Non-Fixed Object 18. Hit Building 19. Hit Ditch 20. Hit Embankment, Dirt Pile, Rock 21. Hit Culvert, Drainage Structure 22. Hit Tree/Bush/Hedge 23. Hit Light/Utility Pole 24. Hit Curb 25. Hit Post 26. Hit Traffic Barrier 27. Hit Other Fixed Object, Part Of Road Structure 28. Hit Other Fixed Object NOT Part Of Road Structure 29. Hit Other Type Fixed Object 30. NN, No 2nd or 3rd Event 31. Other UU, Unknown	<b>49. VEHICLE FACTORS</b> 41. Defective Brakes 42. Defective Steering 43. Defective Lights 44. Tire Blown Out 45. Unsecured Or Spilled Load 46. Oversized Load, Overload 47. Visibility Obstructed 48. Other Defective Parts 49. NN, No Defects 50. Other UU, Unknown	<b>50. ENVIRONMENTAL FACTORS</b> 51. Animal On Roadway 52. Road Surface Or Other Condition 53. Obstruction On Road 54. View Obstructed, Glare, Reflection 55. Weather Or Acts Of God 56. NN, No Environmental Factors 57. Other UU, Unknown	<b>ADDITIONAL WITNESSES ON FILE?</b> Yes No <b>DESCRIPTION:</b> Show Direction of Travel, Obstructions, Vehicle Movement, Travel Lane, Fixed Objects, Traffic Controls.
<b>18. LIGHT CONDITION</b> 1. Daylight 2. Dawn 3. Dusk 4. Darkness 5. Other 6. Unknown	<b>26. ROAD ALIGNMENT</b> 1. Straight And Level 2. Curved With Grade 3. Curved And Level 4. Curved With Grade 5. Top Of Hill/Gradient 6. Bottom Of Hill/Gradient 7. Other 8. Unknown	<b>37. EMERGENCY USE</b> 1. Yes 2. No 3. NN, Not an Emergency Vehicle 4. Other UU, Unknown	<b>38. TRAILER TYPE</b> 1. Recreational Trailer 2. Light Utility Trailer (Boat) 3. Commercial Full Trailer 4. One Semi-Trailer 5. Two Semi-Trailers, A-Train 6. Two Semi-Trailers, B-Train 7. Two Semi-Trailers, C-Train 8. Two Semi-Trailers, Connector Unknown 9. Three Semi-Trailers 10. NN, No Trailers 11. Other UU, Unknown	<b>51. DANGEROUS GOODS CLASS</b> 1. Explosives 2. Gases 3. Flammable Liquids 4. Flammable Solids, Spontaneous Combustibles 5. Oxidizers & Organic Peroxides 6. Poisonous & Infectious Substances 7. Radioactives 8. Corrosives 9. Misc. Dangerous Goods 10. NN, Not a Commercial Vehicle 11. Other UU, Unknown	<b>52. DANGEROUS GOODS CLASS</b> 1. Fully/Partially Loaded 2. Not Loaded 3. NN, Not a Commercial Vehicle 4. Other UU, Unknown	<b>DIAGRAM</b> Use Solid Direction Lines, Before Impact and Broken Lines After 
<b>19. ARTIFICIAL LIGHT CONDITION</b> 1. No Artificial Light 2. Artificial Light - On 3. Artificial Light - Off 4. Other 5. Unknown	<b>27. TRAFFIC CONTROL</b> 01. Traffic Signals - Oper. 02. Traffic Signals - Flashing 03. Stop Sign 04. Yield Sign 05. Warning Sign 06. Pedestrian Crosswalk 07. Police Officer 08. School Guard, Flagman 09. School Crossing 10. Reduced Speed Zone 11. No Passing Zone Sign 12. Road Markings 13. School Bus Stopped/ Lights Flashing 14. School Bus Stopped/ Lights Not Flashing 15. Signals and/or Gates 16. Rail X-ing, Signs Only 17. Unspec. Control Device 18. No Control Present 19. Other 20. Unknown	<b>39. USE OF HEADLIGHTS</b> 1. No Headlights On/Not Equipped 2. Daytime Running Lights On 3. Headlights On 4. Parking Lights Only On 5. Fog Or Auxiliary Lights On 6. Other 7. Unknown	<b>40. VEHICLE SPEED</b> 000. Stopped In Traffic 001. NN, Parked 002. NN, Apparently Normal 003. Other UU, Unknown	<b>53. LOAD STATUS</b> 1. Fully/Partially Loaded 2. Not Loaded 3. NN, Not a Commercial Vehicle 4. Other UU, Unknown	<b>54. BLOOD ALCOHOL CONCENTRATION</b> 000-500 BAC (mg%) of Driver 001. Not Tested, Driver/Pedestrian Dead, Alcohol Use Suspected 002. Not Tested Due To Injury, Alcohol Use Suspected 003. Not Tested - Other Reasons, Alcohol Use Suspected 004. NN, No Alcohol Suspected 005. NN, Passenger 006. UU, UU, Unknown	<b>POLICE COMMENTS</b> PROPOSED ACTION

## Appendix A3 – Brief Description of Fatal Collisions

---

The following is a brief description of the 5 fatal traffic collisions that took place in the Northwest Territories in 2009, resulting in 5 fatalities.

RCMP Detachment	Date	Description
Fort Simpson	03-Feb	Pedestrian struck by pickup truck on Highway #1, km 468 near Fort Simpson. Pedestrian died at the scene. Driver of pickup was not injured. Alcohol was not involved.
Tuktoyaktuk	09-May	Single vehicle rollover involving sport utility vehicle on road in community. Unrestrained passenger died at the scene. Driver sustained minor injuries. Alcohol not involved.
Yellowknife	23-Jul	Single vehicle rollover involving stolen pickup truck on Old Airport Road in Yellowknife City limits. The unrestrained driver was ejected and pronounced dead at the scene. Alcohol involved.
Fort Providence	02-Oct	Sport utility vehicle struck bison on Highway #3 near km 119, spun out on road and subsequently rolled over. Unrestrained elderly passenger sustained fatal injuries. The driver and second passenger sustained superficial injuries. Alcohol not involved.
Hay River	31-Oct	Pickup truck struck pedestrian on Highway #2 near km 34 south of Hay River. Pedestrian died at the scene. The driver and passenger in pickup were not injured. Alcohol not involved.