



Government of / Gouvernement des
Northwest Territories
Territoires du Nord-Ouest

NWT Highway Traffic Report

Rapport sur la circulation routière aux TNO



Le présent document contient la traduction française de l'introduction.

2023

Introduction

The Northwest Territories highway network consists of 2,450 kilometres of all-weather roads and 1,400 kilometres of winter roads. The highway system also includes four vehicle ferries. There are a number of winter roads constructed by mining companies to facilitate mine resupply.

The Department of Infrastructure of the Government of the Northwest Territories is responsible for operation and maintenance, capital rehabilitation, and upgrading of the Northwest Territories highway network.

This report presents traffic data collected by the Department of Infrastructure on the territorial highway network from 1993 to 2023. This report includes traffic information collected on major highways, access roads, winter roads and associated ferry crossings. The report also contains information on vehicle classifications.

Information obtained is used by the Department to monitor changes in traffic flows, classify highways, set priorities in maintenance and capital funding, monitor safety aspects of highways and optimize engineering designs.

Introduction (français)

Le réseau routier des Territoires du Nord-Ouest (TNO) est constitué de 2 450 kilomètres de routes toutes saisons et de 1 400 kilomètres de routes d'hiver; il comprend par ailleurs quatre traversiers pour véhicules. De plus, les sociétés minières ont construit plusieurs routes d'hiver pour faciliter le réapprovisionnement des mines.

C'est le ministère de l'Infrastructure du gouvernement des Territoires du Nord-Ouest (GTNO) qui s'occupe de l'exploitation, de l'entretien, de la réfection et de l'amélioration du système routier des TNO.

Ce rapport présente les données sur la circulation recueillies sur le réseau routier territorial par le ministère de l'Infrastructure de 1993 à 2023. Il comprend de l'information recueillie sur les routes principales, les routes d'accès, les routes d'hiver et les passages de traversiers qui y sont associés. Le rapport comprend également de l'information sur la classification des véhicules.

Le ministère de l'Infrastructure utilise les renseignements obtenus pour surveiller les changements dans la circulation routière, classer les routes, hiérarchiser les priorités en matière d'activités d'entretien et de fonds d'immobilisations, surveiller les aspects de la sécurité sur les routes et optimiser la conception technique.

Table of Contents

Contents

Introduction	2
Introduction (français).....	2
List of Figures	4
List of Tables.....	6
1.0: Summary of Traffic Data Collection Activities and Analysis.....	7
1.1 Background	7
1.2 Traffic Data Collection System	7
1.3 Traffic Data Processing.....	11
1.4 Glossary of Terms.....	11
1.5 Layout Report	12
2.0: Highway Traffic Volume Data.....	13
3.0: Vehicle Movements at Ferries and Weigh Scales	30
Appendix A: Historical Data	45
Appendix B: Data Processing Methodology	45
Data Processing Methodology	45
Step One.....	45
Appendix B: Data Processing Methodology (Continued).....	46
Step Two.....	46
Step Three	46

List of Figures

- Figure 1.1 Northwest Territories Permanent and Seasonal Traffic Counter Locations 8
- Figure 2.1 2023 AADT at Permanent Counters..... 13
- Figure 2.2 2023 AADT on Highway Segments..... 14
- Figure 2.3 Estimated Traffic on Northwest Territories Highways 15
- Figure 2.4 Traffic on Northwest Territories Access Roads (sorted by counter) 16
- Figure 2.5 Monthly Average Daily Traffic on Northwest Territories Winter Roads
(sorted by counter) 18
- Figure 2.6 Opening and Closing Dates for Winter Roads & Ice Bridges 20
- Figure 2.7 Truck Traffic on the Tibbitt to Contwoyto Winter Road..... 21
- Figure 2.8 Estimated Vehicle Kilometres Travelled on Northwest Territories Highways ... 22
- Figure 2.9 Estimated Vehicle Kilometres Travelled on Northwest Territories Highways ...23
- Figure 2.10 Yearly Trends in Road Related Indicators 24
- Figure 2.11 Traffic Characteristics at Permanent Counters..... 25
- Figure 2.12 Traffic Characteristics at Permanent Counters..... 26
- Figure 2.13 Traffic Characteristics at Permanent Counters..... 27
- Figure 2.14 Deh Cho Bridge Traffic by Month and Federal Highway Administration Class ..28
- Figure 2.15 Deh Cho Bridge Traffic by Month 29
- Figure 2.16 Deh Cho Bridge Traffic by Day of Week..... 29
- Figure 2.17 Deh Cho Bridge Traffic by Hour 29
- Figure 3.1 Average Daily Traffic on Highway Ferries 30
- Figure 3.2 Average Daily Traffic on Highway Ferries 31

Figure 3.3	Vehicle Classification Data at Liard River Ferry (M.V. Lafferty)	32
Figure 3.4	Vehicle Classification Data at Mackenzie River Ferry (M.V. Louis Cardinal)	33
Figure 3.5	Vehicle Classification Data at Peel River Ferry (C.F. Abraham Francis)	34
Figure 3.6	Vehicle Classification Data at Mackenzie River Ferry (M.V. Johnny Berens)	35
Figure 3.7	Commercial Vehicles Weighed at the Enterprise Weigh Scale	36
Figure 3.8	Commercial Vehicles Weighed at the Inuvik Weigh Scale	37
Figure 3.9	Overweight Permits Issued	38
Figure 3.10	Over-dimension Permits Issued	39
Figure 3.11	Registration Permits Issued (non-NWT Carriers)	40
Figure 3.12	Fuel Tax Permits Issued	41
Figure 3.13	Vehicle Classifications at the Enterprise Weigh Scale	42
Figure 3.14	Vehicle Classifications at the Inuvik Weigh Scale	43
Figure 3.15	Vehicle Classifications at Highway Ferries	44

List of Tables

Table 1 Highway System Classification (2023) 9

Table 2 Permanent and Seasonal Counter Locations..... 10

1.0: Summary of Traffic Data Collection Activities and Analysis

1.1 Background

A map of the highway network is provided in Figure 1.1. A detailed listing of the highway system classification by surface type is provided in Table 1. It is noted that, in addition to the above, there are a number of winter roads constructed by mining companies to facilitate mine resupply.

To monitor traffic utilizing the highway system, the Department of Infrastructure operates a series of electronic counters and conducts periodic visual counts and surveys. Supplementing this information is data from the weigh scales and usage logs from the four ferries. Traffic data is made available to businesses and the general public as needed. Data can also be accessed from the Government of the Northwest Territories Open Data portal at: [Traffic Volume Data - Dataset - Open Data \(gov.nt.ca\)](https://open.data.gov.nt.ca/dataset/traffic-volume-data)

1.2 Traffic Data Collection System

The Department of Infrastructure collects traffic data at a number of permanent and seasonal counting stations as shown in Table 2 and illustrated in Figure 1. These stations provide hourly information on traffic for the complete year, or selected portions of the year for counters located on winter roads or other seasonal access roads. These stations are positioned to capture the general flow of traffic on the highway network.

Vehicle classification information is collected at the four ferries that operate on the highway system. The Air, Marine and Safety Division of the Department of Infrastructure is responsible for collecting and processing this information. Special turning movement counts at select intersections and visual vehicle classification counts are also conducted annually or as needs arise. No intersection counts were undertaken in 2023.

Information on truck volumes and commodities is obtained from the weigh scales in Enterprise and Inuvik. Truck volumes utilizing the Tibbitt to Contwoyto Winter Road in the Slave Geological Province is also collected and presented in this report.

In 2023, approximately 80 % of all potential data was useable for determining traffic volumes. This is attributed to the purchase and installation of portable traffic counters, similar to those installed on the winter road system, at 18 locations and permanent automated traffic counters/classifiers at 12 locations. This represents a significant improvement over previous years. Where data was missing, traffic volumes have been estimated based on previous years' data and information from other sources such as vehicle movements at ferries and weigh scales.

**Figure 1.1
Northwest Territories Permanent
& Seasonal Traffic Counter
Locations (2023)**

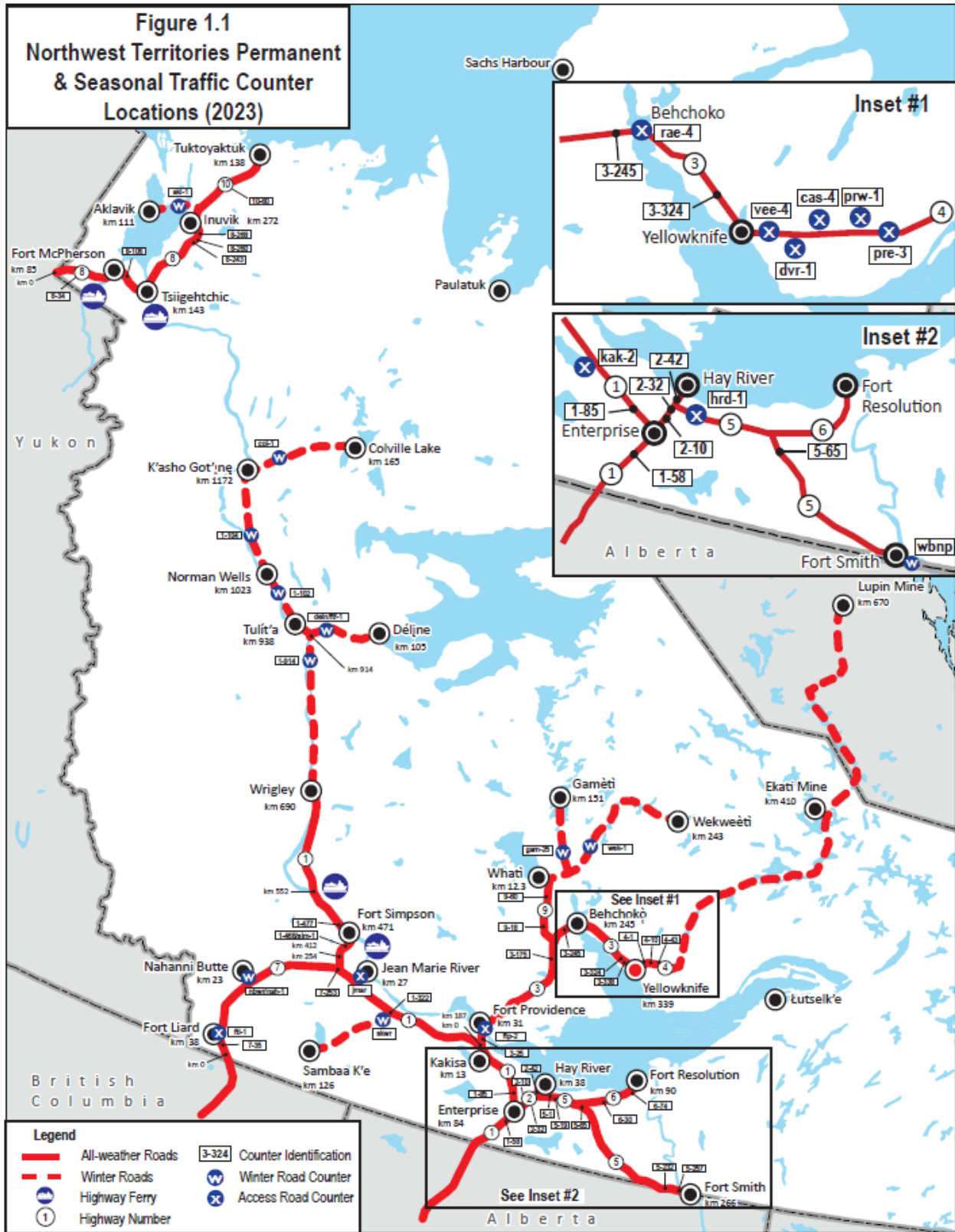


Table 1 Highway System Classification (2023)

	Length (kilometres)					Total
	Paved	Dust-controlled gravel	Untreated Gravel	Ferry Crossing	Winter Road	
All-Weather Highways						
Highway 1 (Mackenzie Highway to Wrigley)	326.0	358.5		2.5		687.0
Highway 2 (Hay River Highway)	48.6					48.6
Highway 3 (Yellowknife Highway)	338.8					338.8
Highway 4 (Ingraham Trail)	59.0	10.2				69.2
Highway 5 (Fort Smith Highway)	266.0					266.0
Highway 6 (Fort Resolution Highway)	90.0					90.0
Highway 7 (Liard Highway)	20.0	73.2	160.9			254.1
Highway 8 (Dempster Highway)	10.3	91.5	170.7			272.5
Highway 9 (Tlicho Highway)		97.0				97.0
Highway 10 (Inuvik Tuktoyaktuk Highway)		138.0				138.0
Total	1,158.7	768.4	331.6	2.5	0.0	2,261.2
Access Roads						
Kakisa Lake Access	12.9					12.9
Fort Simpson Access	3.4					3.4
Jean Marie River Access			27.0			27.0
Fort Providence Access	5.4					5.4
Rae Access	10.5					10.5
Dettah Access	11.3					11.3
Hay River Reserve Access	11.0	1.4	1.9			14.3
Fort Liard Access		5.3				5.3
Nahanni Butte Access			21.3		1.0	22.3
Yellowknife Access	3.6					3.6
Fort McPherson Access	1.1					1.1
Inuvik Access	0.6					0.6
Whati Access		12.3				12.3
Miscellaneous Minor Access	3.2	8.5	74.1			85.8
Total	63.0	27.5	124.3	0.0	1.0	215.8
Winter Roads						
Highway 1 (Mackenzie Highway, Wrigley to FGH)					472.4	472.4
Colville Lake Access					165.0	165.0
Saamba K'e Access					126.0	126.0
Déline Access					105.3	105.3
Gamèti Winter Road					151.0	151.0
Wekweèti Winter Road					243.0	243.0
Aklavik Access					116.0	116.0
Dettah Access					6.3	6.3
Total	0.0	0.0	0.0	0.0	1,385.0	1,385.0
Total All-Weather Roads						2,480.0
Total Winter Roads (Department of Infrastructure)						1,385.0

Table 2 Permanent and Seasonal Counter Locations

Counter ID	Location (hwy/road)	Kilometre	Description
All-Weather Highways			
1-58	Highway 1	58	15 km south of Alexandra Falls
1-85	Highway 1	85	1.2 km west of Enterprise
1-322	Highway 1	322	0.4 km west of Trout Lake winter road
1-477	Highway 1	477	5.2 km west of Fort Simpson Access on Highway 1
2-10	Highway 2	10	10 km north of Enterprise, south of Paradise Gardens
2-32	Highway 2	32	40 metres north of Highway 2 and 5 intersection, south of service road
2-42	Highway 2	42	North of West Channel, across bridge
3-25	Highway 3	25	1 km north of Deh Cho Bridge
3-175	Highway 3	175	53 km north of Chan Lake, 62 km south of Edzo
3-240	Highway 3	240	3 km south of Rae Access, north of Edzo
3-324	Highway 3	324	19.3 km east of Boundary Creek
3-338	Highway 3	338	0.7 km east of Highway 3 and 4 intersection
4-1	Highway 4	1	1 km north of Highway 3 and 4 intersection
4-10	Highway 4	10	2.5 km east of Yellowknife River Bridge / 300 m west of Dettah Access Road
4-43	Highway 4	43	11 km east of Prelude Lake East Access, 12 km west of Cameron River
5-1	Highway 5	1	1 km east of Highway 2 and 5, 1.5 km west of Hay River Reserve Access
5-19	Highway 5	19	10.6 km east of Sandy Creek, 19 km east of Highway 2 and 5 intersection
5-65	Highway 5	65	5 km south of Highway 5 and 6 intersection
5-232	Highway 5	232	12.3 km west of Salt River Village Access
5-257	Highway 5	257	6.1 km west of Fort Smith
6-30	Highway 6	30	8.5 km east of Pine Point Access
6-74	Highway 6	74	16 km west of Fort Resolution
7-35	Highway 7	35	2.6 km south of Fort Liard
7-253	Highway 7	253	0.3 km south of Highway 1 and 7 intersection
8-34	Highway 8	34	10 km west of Midway Lake
8-106	Highway 8	106	20.6 km north of Fort McPherson Access
8-243	Highway 8	243	1 km south of Cabin Creek
8-260	Highway 8	260	0.7 km north of airport access
8-268	Highway 8	268	1.3 km south of Inuvik
9-18	Highway 9	18	18 km north Highway 3
9-60	Highway 9	60	37 km south Gameti Winter Road intersection
10-60	Highway 10	60	60 km north Inuvik Town limits
Access Roads			
cas-4	Cassidy Point	1	1 km north of junction with Highway 4
dvr-1	Dettah	1	1 km south of junction with Highway 4
ftl-1	Fort Liard	1	1 km west of junction with Highway 7
ftp-2	Fort Providence	2	2 km west of junction with Highway 3
hrd-1	Hay River Dene Reserve	1	1 km north of junction with Highway 5
kak-2	Kakisa	2	2 km south of junction with Highway 1
pre-3	Prelude East	1	1 km north of junction with Highway 4
prw-1	Prelude West	1	1 km north of junction with Highway 4
rae-4	Fort Rae	4.2	4.2 km north of junction with Highway 3
vee-4	Vee Lake	4.3	4 km north of junction with Highway 4
sim-1	Fort Simpson	1	1 km north of junction with Highway 1
Winter Roads			
1-914	Highway 1	914	Northern-most side of junction of Highway 1 and Déljine Access
1-1022	Highway 1	1022	1.4 km south of Norman Wells
1-1040	Highway 1	1040	7.6 km north of Norman Wells
akl-1	Aklavik	1	1 km west of junction with Tuktoyuktuk Winter Road
col-1	Colville Lake	1	1 km east of junction with Highway 1 at Fort Good Hope
deln-1	Deline	1	1 km east of junction with Highway 1
det-1	Dettah	1	0.1 km east of junction with School Draw Avenue
det-6	Dettah	6	0.3 km west of Dettah Village
gam-1	Gameti	1	1 km north of junction with Highway 9
gam-25	Gameti	25	25 km north of junction with Highway 9
nbwr / nah-1	Nahanni Butte	2	2 km west of junction with Highway 7
tlwr	Sambaa K'e	1	1 km south of junction with Highway 1
wek-1	Wekweeti	1	1 km east of junction with Gameti Winter Road

1.3 Traffic Data Processing

The traffic counters located throughout the Northwest Territories highway network collect traffic data on a continual basis. Data from the 18 portable counters is stored to memory every hour. Twice per year (once in the spring and again in the fall) personnel working out of the highway maintenance camps retrieve counters. The retrieved counters are sent to the Department of Infrastructure Policy, Planning and Communications Division for data downloading, replacing batteries and reprogramming. The counters are then sent back to the highway maintenance camps for redeployment. Traffic data from the 12 automated counters/classifiers is downloaded monthly from a web portal.

After data is downloaded, personnel with the Policy, Planning and Communications Division conduct a first level screening of the data. Any problems are noted and corrupt data is disregarded. The data is then copied into a Microsoft Excel spreadsheet and analyzed to obtain the information presented in this report.

The first step in the analysis of the traffic data is to check for completeness and accuracy. Common problems include missing data due to the counter or module not functioning correctly, overlapping or missing data between months, and counts too high or low due to counter malfunctions. To ensure accurate results and also provide as much information as possible, a series of procedures have been established to correct deficiencies in the data. These steps are outlined in Appendix B.

1.4 Glossary of Terms

Average Annual Daily Traffic (AADT) is an estimate of the mean daily traffic for a period of one year.

Average Daily Traffic (ADT) is an estimate of the mean traffic for a specified period of time. For example, monthly ADT is an estimate of the mean daily traffic for a specified month.

Growth Rate is the increase or decrease in AADT from year to year.

Near Urban Highway is a section of highway located within or near a major urban centre.

Peak Summer Average Daily Traffic (PSADT) is an estimate of the mean daily traffic for the months of June, July and August.

Permanent Traffic Counter is a counter that is permanently placed at a specific location and counts traffic continuously.

Rural Highway is a section of highway located away from the traffic influence of a major urban centre.

Short Term Counts provide measurements of traffic characteristics based on visual observation for a specified period of time and purpose.

Traffic Distributions illustrate how traffic varies over time. Distributions may be by month, by day of the week or hourly, and is usually measured as a percent of the AADT.

Vehicle Classification is the distribution of vehicle types in a traffic stream.

Vehicle Kilometres Travelled is the total number of vehicles for a specific road segment multiplied by the length of the road segment.

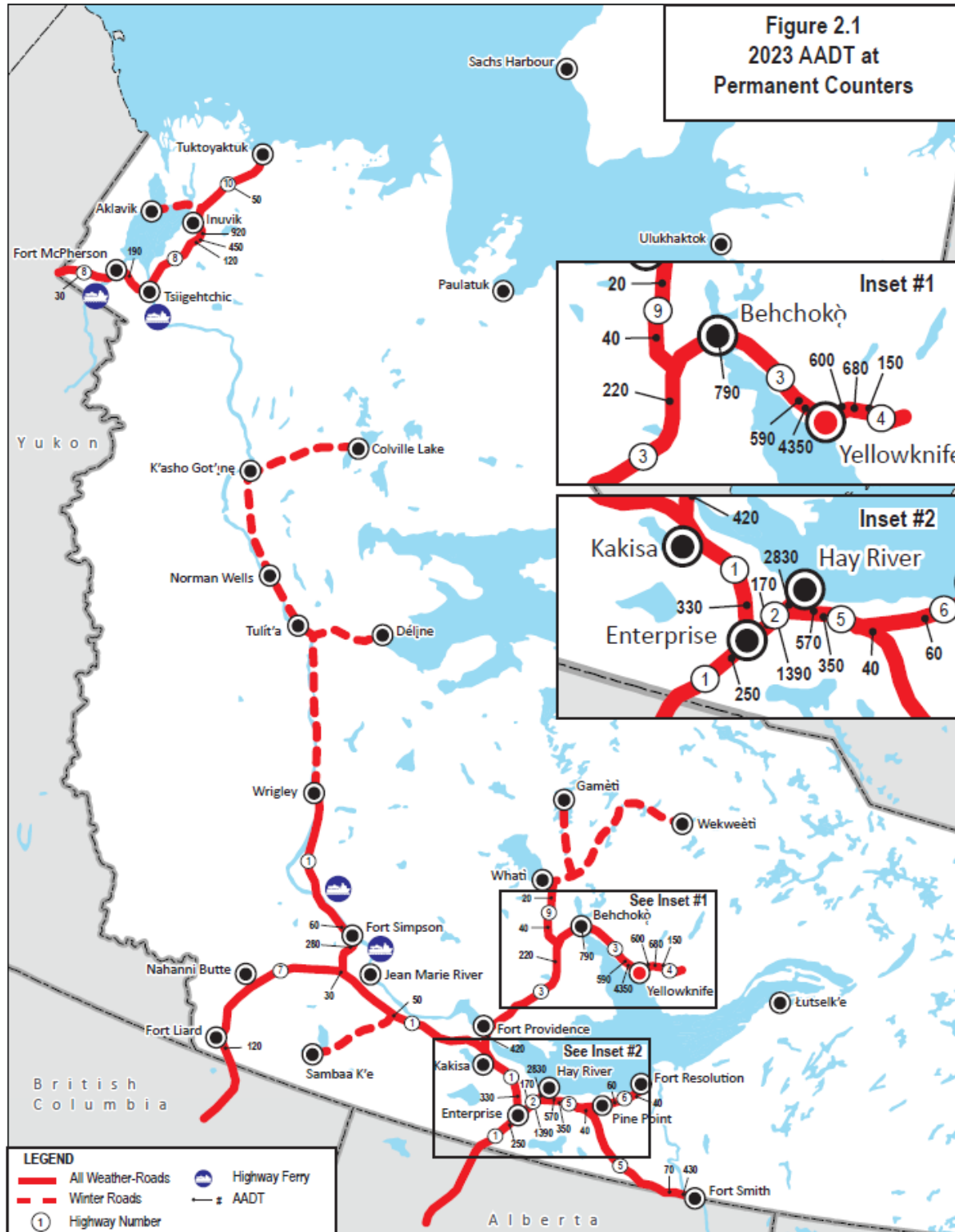
1.5 Layout Report

This report is organized into three sections:

- **Section 1** provides an introduction to the Northwest Territories traffic data collection system.
- **Section 2** presents the traffic information collected at all portable and permanent counter locations and selected mining roads; including traffic volumes, distributions, Deh Cho Bridge traffic, and vehicle kilometres travelled.
- **Section 3** presents traffic information collected on highway ferries, and commercial vehicle activity from the weigh scales.

The Appendices present additional detailed traffic information.

2.0: Highway Traffic Volume Data



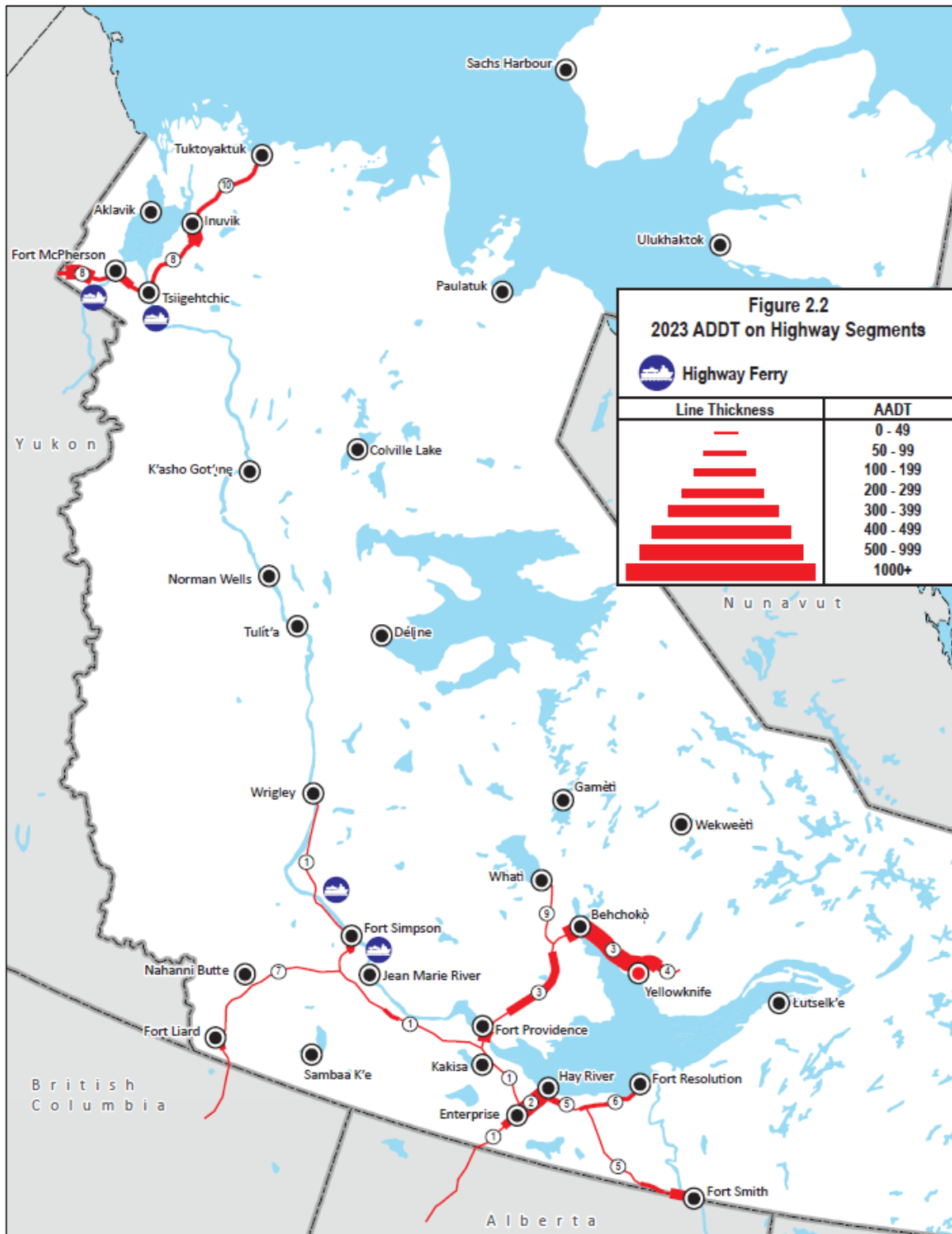


Figure 2.3 Estimated Traffic on Northwest Territories Highways

Highway	Kilometre	Counter ID	Description	Average Annual Daily Traffic (AADT)										Peak Summer Average Daily Traffic (PSADT)									
				2023	2022	2021	2020	2019	2018	2017	2016	2015	2014	2023	2022	2021	2020	2019	2018	2017	2016	2015	2014
1	58	1-58	15 km south of Alexandra Falls	250	220	160	210	460	470	470	460	450	430	360	270	190	170	**	630	640	620	590	570
1	85	1-85	1.2 km west of Enterprise	330	310	210	360	530	540	540	530	520	500	460	440	230	**	**	750	740	730	690	670
1	322	1-322	0.4 km west of Trout Lake Winter Road	50	60	60	60	60	50	60	60	70	60	70	60	80	70	70	80	70	80	90	70
1	468	1-468	3 km east of Fort Simpson Access on Highway 1	280	290	260	230	250	280	130	130	150	130	320	360	260	250	220	420	170	170	200	170
1	477	1-477	5.2 km west of Fort Simpson Access on Highway 1	60	60	60	60	50	60	80	80	90	80	50	70	60	60	60	70	110	110	120	100
2	10	2-10	10 km north of Enterprise, south of Paradise Gardens	170	260	350	310	720	730	730	720	690	670	250	330	390	310	**	970	980	960	920	890
2	32	2-32	40 metres north of Highway 2 & 5 intersection	1390	1560	1060	610	1890	1930	1930	1890	1820	1750	1680	2050	910	740	**	2560	2560	2510	2420	2330
2	42	2-42	North of West Channel across bridge	2830	2290	1200	1600	2350	2400	2400	2360	2260	2170	3320	2140	1120	1990	**	3200	3190	3130	3020	2900
3	26	3-26	1 km north of Deh Cho Bridge	420	410	390	380	390	400	400	390	380	370	530	540	490	470	480	480	490	460	460	480
3	175	3-175	53 km north of Chan Lake, 62 km south of Edzo	220	210	200	190	210	260	380	370	360	350	240	230	230	230	520	520	510	480	460	
3	240	3-240	3 km south of Rae access, south of Frank's Channel	790	750	640	610	600	750	970	950	930	890	840	860	780	660	610	740	1330	1300	1240	1190
3	324	3-324	21 km east of Boundry Creek	590	600	650	560	840	860	690	680	660	740	560	550	640	590	600	1190	790	780	740	810
3	338	3-338	0.8 km west of Highway 3 and 4 intersection	4350	4030	4080	3710	4370	5090	6340	6230	6020	6600	5010	3970	4280	4190	4710	6000	8120	7960	8030	8810
4	1	4-1	1 km north of Highway 3 & 4 intersection	600	610	660	670	690	650	630	680	640	700	700	770	850	830	830	790	700	830	790	790
4	10	4-10	2.5 km east of Yellowknife River Bridge	680	730	740	810	810	720	580	630	610	670	880	1020	970	1060	970	930	570	620	630	690
4	43	4-43	11 km east of Prelude Lake East Access	150	150	110	170	160	130	150	160	150	170	180	180	200	180	180	170	150	160	160	180
5	1	5-1	1 km east of Highway 2 & 5 intersection	570	660	590	600	680	700	720	710	680	660	690	940	840	840	**	960	960	940	910	880
5	19	5-19	19 km east of Highway 2 & 5 intersection	350	170	150	150	240	250	260	260	250	240	330	240	250	200	**	190	350	340	330	320
5	65	5-65	5 km south of Highway 5 & 6 intersection	40	40	70	70	130	130	90	90	90	90	30	40	130	90	**	90	90	90	90	130
5	232	5-232	25 km west of Fort Smith	70	90	80	100	150	120	180	170	170	170	70	110	90	140	**	150	240	240	230	220
5	257	5-257	6.1 km west of Fort Smith	430	370	330	330	530	540	570	560	540	520	440	410	360	380	430	760	760	740	720	690
6	30	6-30	8.5 km east of Pine Point Access	60	80	60	60	70	70	60	60	60	60	50	90	80	**	**	30	40	40	40	40
6	74	6-74	16 km west of Fort Resolution	40	60	80	80	100	100	100	100	100	100	30	60	130	100	**	120	140	140	140	140
7	35	7-35	2.6 km south of Fort Liard	120	100	50	60	80	90	100	100	120	100	200	140	60	50	100	100	120	130	150	130
7	253	7-253	0.3 km south of Highway 1 & 7 intersection	30	30	30	20	40	50	60	60	70	60	40	30	30	30	80	70	80	80	90	80
8	34	8-34	10 km west of Midway Lake	30	30	30	40	40	50	60	60	60	60	30	40	40	40	70	80	90	80	90	90
8	106	8-106	4.6 km north of Fort McPherson Access	190	200	100	80	90	180	90	80	90	80	280	300	80	90	140	140	110	100	120	110
8	243	8-243	1 km south of Cabin Creek	120	90	90	90	80	150	170	160	140	150	170	120	**	120	90	210	220	210	190	200
8	260	8-260	0.7 km north of fair port access	450	420	340	300	1170	1530	1450	1370	1200	1250	540	540	390	330	750	1900	1910	1810	1600	1670
8	268	8-268	1.3 km south of Inuvik	920	830	740	610	2030	2650	2510	2380	2090	2180	1150	1060	850	**	**	3300	3310	3150	2780	2900
9	18	9-18	Hwy #3 to km 48.5	40	40									30	40								
9	60	9-60	km 48.5 to Whati Access	20	20									10	30								
10	60	10-60	60 km north of Inuvik Town Limits	50	60	40	40	50	50					80	100	60	60	60	90				

Note: ** Insufficient data to calculate AADT/PSADT
AADT - Average Annual Daily Traffic
PSADT - Peak Summer Average Daily Traffic (June, July, August)
All values are estimated and rounded to the nearest 10.

Figure 2.4 Traffic on Northwest Territories Access Roads (sorted by counter)

Community	Location (km)	Counter ID	Year	Monthly Average Daily Traffic												PSADT		
				Jan	Feb	Mar	Apr	May	Jun	Jul	Aug	Sep	Oct	Nov	Dec			
Kakisa	2	kak-2	2000	24	43	52	74	86	50				33	36	47		50	
			1999	27	27	38	60	89	53				52	38	27	25		53
			1998				28	64	77	101	80	55	32	29	23			86
			1997	23	21	21			94	79	90	37	15	21	20			88
			1996	18	23	25	23	49	84	109	90	43	31	24	24			94
			1995	26			24		77	109	76	54	31	23	24			87
			1994	15	19	17		49	68	109	87	48	37		24			88
1993	16		20	21	46	61	81	94	44	29	20	20			79			
Rae	4.2	rae-4	2009	595	650													
			2008	628	671	784	735	717	695	647	702	766	772	649	597		681	
			2007							726	804	665	685	777	682	621		732
			2004		693	667												
			1998				433											
			1997								543	593	542	568				568
			1996	283						580		686	673	582	373			686
1995								553	614	621	644	581	389		584			
Dettah	1	dvr-1	2018					316	336	265	316	340	319				306	
			2009	43	50	55	118	197										
			2008	37	33	22		173	194	168	186	182	202	173	139			183
			2007					422	313	255	176	158	169	153	114			248
			2001	56	161			283	284	256		216						270
			2000	48	34	54	95	261	310	211	278	290	277	235				266
			1999		44	53	292	277		245	270	289	293	246				258
			1998	73	65	57	31	121	156	134	121			259	212			137
			1997									126	98	241	252	186		126
			1996								237	211	252	258	262			224
Paradise Gardens	2	pgr-1	1996	78	90	93	109	111	157	160	172	141	122	103	99		163	
			1995								143	134	109	94	78		143	
			1994	69	65	68	96	110	138	128	140	123					135	
			1993							114	97	109	103	87	76	73		107
Vee Lake	4.3	vee-4	2018					55	48	46	62	84	65				52	
			2005			75	65	58	72	68	59	45	35	20				66
			2004	40	61	55		59										
			2003															
			2002	56								57	54	34	52	44		57
			2001							60	75	44		19				60
			2000															
			1999	43	82	70	58	39										
			1998	63	71	70	58	79	77	77	59	49	35	37	20			71
			1997							86	65	63	41	33				71
			1996							100	67	58	37	25	38			75
1995								71	51	52	26	41			61			
1994							90	84	56	47	33				77			
Cassidy Point	4	cas-4	1998								96	54	46	35			96	
			1997							57	50	36	36				54	
			1996							123	94	75	49	43			109	
			1995										46	34				
			1994		75	88	177	84	96	102	82	67	53					93
1993							90	100	80	64	50	44			95			
Prelude Lake West	1	prw-1	1998							193	238	139	78	57			216	
			1997						290	290	253	141	64				278	
			1996						331	256	243	127	90	101			277	
			1995										83	50				
			1994															
1993								239		117	85	63			239			
Prelude Lake East	3	pre-3	2000						306								306	
			1999					283	307	261							284	
			1998															
			1997						5	88	83	74	59					59
			1996						116	83	76	78	62	58				92
			1995								68	65	48	29				68
			1994								85	71	64	54				78
1993						93	91	86		82	72				88			

Note: Blanks indicate insufficient data to calculate monthly ADT.

Figure 2. 4 cont'd Traffic on Northwest Territories Access Roads (sorted by counter)

Community	Location (km)	Counter ID	Year	Monthly Average Daily Traffic												PSADT						
				Jan	Feb	Mar	Apr	May	Jun	Jul	Aug	Sep	Oct	Nov	Dec							
Hay River Dene Village	1	hrd-1	2005		86	83	178	479					546	378								
			2004	84	80	73																
			2001			36	404		287			623	469	121	441					455		
			2000	14	37	52	304	416	453	400	421	469									425	
			1999	32	37	126	357					356	399	425	167				33		378	
			1998	62	40	48	267								420	301	45					
			1997	29	33	42				395	362											379
			1996	31	54	71	354	446	480	383	416	373	390	255	33							426
			1995	29	33	41	216		451	391	420	407	414	170	43							421
			1994	26	31	75	302															39
			1993	28	27	137	376			411	356	365	333	344	234	50						377
Fort Providence	2	ftp-2	2009					445	571	570										571		
			2008	296	317	357	334	469	570	552	491	424			269	278					538	
			2007	322	246	289	290	422	554	513	654			362	306	297					574	
			2006	318	301	280	303	420	500	478				355	266	405					489	
			2005		362	464	133	43	415	387	333				201	180						378
			2004	255	298																	
			2003	260	269	264		396	353	515	551											473
			2002	277	243	248						457	375	334	279	289						457
			2001			208				324	352	365	336	207								347
			2000	315	421	270	219	299	259	254	210	194	200	139	119							241
			1999	316	423	259	309	662	239	205	176	170	154	149								207
			1998	249	276	271	397	315				309	328	254	49							
			1997			213			465	439	488	337	271									464
			1996	211	227	242	297	360	421	419	501	397	307	331	247							447
1995	200	228	226	273	357	368	426	477	303	262	244								424			
Fort Liard	1	ftl-1	1998			242	175	207	332	405	326	249								354		
			1997	166	218	211	238						132	89								
			1996		195	210				252	197	193	156			142					225	
			1995	172	366	339	213	220	209	255	297	220	172	135	134						254	
			1994	150	161	197	169	206				231	190	199	162	172						231
1993	155	165	166	170	180	204	211	193	180	171	162	146							203			
Fort Simpson	1	sim-1	2011	1227	1173	1803																
			2010						1622	1524	1551	1467	1327	1216	1528							1566
			2009	271	247																	
			2008	1176	1221	1275	1198															476
			2007	1203	1335	1261	954	1343	1323	1404	1349	1227	1258	1248	1340							1359
			2006	1075		1176	1126	1293	1465	1386	1397											1416
			2005							1292	1493	1313	1202	1107	1041							1393
			2004																			
			2003			1289	1302															
			2001				430						269	354								
2000	961	991	1093	1110						911										911		
Jean Marie River	1	jmar	2011	24	6	33																
			2010						2	18	30	17	44	31	10							17
			2008	17		20	32	76														
			2007	37	39	18	17	28	34	22	18	16	23	39	13							25
			2006			22	85	71	32	33	13	29										26
			2005								24	23	33	23								24
			2004																			
			2003			34	36															
			2001										19	27	81							
2000				16	22	30	23	17														

Note: Blanks indicate insufficient data to calculate monthly ADT.

Figure 2.5 cont'd Monthly Average Daily Traffic on Northwest Territories Winter Roads (sorted by road)

Winter Road	Location (km)	Counter ID	Year	Opening Date	Closing Date	Number Days	Monthly Average Daily Traffic					ADT		
							Dec	Jan	Feb	March	April		May	
Highway No. 1 (Norman Wells North)	1031	1-1031	2024	19-Dec-2023	2-Apr-2024	105		28	32	36			32	
			2023	23-Dec-2022	30-Mar-2023	97		29	31	41			34	
			2021	24-Dec-2020	7-Apr-2021	104		34	41	43			39	
			2020	23-Dec-2019	20-Mar-2020	88		34	31	43			35	
			2019	22-Dec-2018	20-Mar-2019	88		26	36	41			33	
			2018	16-Dec-2017	9-Apr-2018	114		26	36	40	38		34	
			2017	17-Dec-2016	2-Apr-2017	106		63	71	69			68	
			2016	21-Dec-2015	31-Mar-2016	101		21	37	53			37	
			2015	17-Dec-2014	31-Mar-2015	104		23	32	39			31	
			2014	28-Dec-2013	14-Apr-2014	107		24	35	42	29		33	
Nahanni Butte	2	nbwr	1997	9-Dec-1996	17-Apr-1997	129		23	40	69	13		36	
			1996	1-Dec-1995	25-Mar-1996	115		11	10	19			13	
			1995	1-Dec-1994	26-Mar-1995	115		10	17	39			22	
			1994	18-Dec-1993	28-Mar-1994	100			20	18			19	
			1993	15-Dec-1992	27-Mar-1993	102			13	12			12	
Tibbitt to Contwoyto	0.3	lupin	2014	30-Jan-2014	1-Apr-2014	61		212	373	283			322	
			2012	1-Feb-2012	28-Mar-2012	56			292	253			273	
			2011	28-Jan-2011	31-Mar-2011	62		136	390	286			323	
			2010	4-Feb-2010	21-Mar-2010	45			289	189			246	
			2009	1-Feb-2009	25-Mar-2009	52			518	303			417	
			2008	28-Jan-2008	7-Apr-2008	70			553	349	49		406	
			2007	28-Jan-2007	8-Apr-2007	70		251	482	323	67		353	
			2006	5-Feb-2006	26-Mar-2006	49			167	243			204	
Tli'Cho	1	tli'cho	2017	26-Jan-2017	8-Apr-2017	72		342	366	372	165		345	
			2016	5-Feb-2016	12-Apr-2016	67			487	473	339		456	
			2015	19-Jan-2015	15-Apr-2015	86		87	85	115	108		100	
			2014	24-Jan-2014	22-Apr-2014	88		75	233	385	183		259	
			2013	22-Jan-2013	21-Apr-2013	89		66	98	299	175		182	
			2012	25-Jan-2012	19-Apr-2012	85			38	38	53		42	
			2011	14-Jan-2011	8-Apr-2011	84		78	78	104	77		87	
			2010	20-Jan-2010	11-Apr-2010	81		95	72	120	165		106	
			2009	23-Jan-2009	14-Apr-2009	81			81	142	111		113	
			2008	8-Feb-2008	11-Apr-2008	63			100	163	148		135	
Sambaa K'e	1	tlwr	2024	19-Dec-2023	2-Apr-2024	105		10	15	14	3		13	
			2023	22-Dec-2022	28-Mar-2023	96		10	13	22			15	
			2022	22-Dec-2021	6-Apr-2022	105		7	12	15			11	
			2019	19-Dec-2018	20-Mar-2019	91		6	6	6			6	
			2018	20-Dec-2017	31-Mar-2018	101		6	6	6	3		6	
			2017	23-Dec-2016	8-Apr-2017	106		12	9	21			14	
			2016	21-Dec-2015	31-Mar-2016	101		6	6	6	3		6	
			2015	17-Dec-2014	31-Mar-2015	104		3	2	5			3	
			2014	23-Dec-2013	9-Apr-2014	107		7	5	5			6	
			2002	14-Jan-2002	18-Mar-2002	63		6	7				7	
Tuktoyaktuk	1	tuk-1	2017	9-Dec-2016	29-Apr-2017	141		134	123	167	187		153	
			2016	11-Dec-2015	24-Apr-2016	135		198	151	232	222		200	
			2015	3-Dec-2014	23-Apr-2015	141		92	75	96	220	198	134	
			2014	23-Dec-2013	29-Apr-2014	127			101	112	149		121	
			2013	13-Dec-2012	7-May-2013	145				125	200	179	146	168
			2012	10-Dec-2011	25-Apr-2012	137				111	130	330		182
			2011	22-Dec-2010	3-May-2011	132				106	190	137	77	143
			2010	18-Dec-2009	20-Apr-2010	123				113	137	350		182
			2009	18-Dec-2008	26-Apr-2009	129			131	130	204	178	53	161
			1997	20-Dec-1996	25-Apr-1997	126		30	44	61				48
Gameti (near Highway 9)	1	gam-1	2024	22-Feb-2024	8-Apr-2024	46			41	67	74		57	
			2023	27-Feb-2023	14-Apr-2023	46			46	73	98		67	
			2022	16-Feb-2022	22-Apr-2022	65			37	58	44		47	
			2021	25-Jan-2021	15-Apr-2021	80		74	57	91	60		72	
			2020	24-Jan-2020	10-Apr-2020	77		74	57	91	60		73	
Wekweeti	1	wek-1	2024	21-Mar-2024	8-Apr-2024	18				47	53		48	
			2023	20-Mar-2023	14-Apr-2023	25				46	31		41	
			2022	11-Mar-2022	22-Apr-2022	42				30	20		26	
			2021	12-Mar-2021	15-Apr-2021	34				6	34	32	33	
			2020	6-Mar-2020	10-Apr-2020	35				34	32		34	
			2019	20-Mar-2019	12-Apr-2019	23				27	30		28	
			2018	22-Feb-2018	24-Apr-2018	61			24	21	20		22	
			2017	3-Mar-2017	8-Apr-2017	36				14	31		17	
			2016	14-Mar-2016	12-Apr-2016	29				38	48		41	
			2015	7-Mar-2015	15-Apr-2015	39				23	13		20	

Note: Blanks may indicate insufficient data to calculate monthly ADT, road closed, or counter not installed.

Figure 2.6 Opening and Close Dates for Winter Roads & Ice Bridges

Year	Winter Roads				Ice Bridges				Mining Roads									
	Whigley - Tullia (Highway #1)	Tullia - Norman Wells (Highway #1)	Norman Wells - Ft. Good Hope (Highway #1)	Colville Lake Access	Delina Access	Nahanni Burns Access	Samba K'e Access	Wekweelt Access	Wina T'i Access	Gannell Access	Deltah Access	TUKOYAK Access	Atlanik Access	Mackenzie River Crossing at Fort Simpson	Mackenzie River Crossing at Tsihst'ehic	Peel River Crossing	Mackenzie River Crossing at Camseil	Winter Road
1999/00	Open 3-Feb	Open 11-Jan	Open 24-Dec	Open 28-Jan	Open 1-Feb	Open 14-Feb	Open 11-Jan	Open 14-Dec	Open 17-Jan	Open 17-Jan	Open 6-Jan	Open 3-Dec	Open 15-Nov	Open 5-Nov	Open 31-Dec	Open 28-Jan	Open 31-Jan	Open 28-Jan
2000/01	Closed 15-Mar	Closed 15-Mar	Closed 15-Mar	Closed 15-Mar	Closed 12-Apr	Closed 12-Apr	Closed 12-Apr	Closed 12-Apr	Closed 12-Apr	Closed 12-Apr	Closed 20-Apr	Closed 22-Apr	Closed 5-May	Closed 5-May	Closed 22-Apr	Closed 1-Feb	Closed 1-Feb	Closed 1-Feb
2001/02	Closed 15-Mar	Closed 15-Mar	Closed 15-Mar	Closed 15-Mar	Closed 12-Apr	Closed 12-Apr	Closed 12-Apr	Closed 12-Apr	Closed 12-Apr	Closed 12-Apr	Closed 20-Apr	Closed 22-Apr	Closed 5-May	Closed 5-May	Closed 22-Apr	Closed 13-Apr	Closed 13-Apr	Closed 13-Apr
2002/03	Open 20-Dec	Open 10-Jan	Open 11-Jan	Open 18-Jan	Open 24-Jan	Open 25-Apr	Open 30-Apr	Open 2-May	Open 31-Dec	Open 31-Dec	Open 24-Jan	Open 2-Dec	Open 20-Nov	Open 9-May	Open 14-Dec	Open 26-Jan	Open 16-Apr	Open 16-Apr
2003/04	Open 18-Mar	Open 18-Mar	Open 18-Mar	Open 18-Mar	Open 17-Jan	Open 17-Jan	Open 17-Jan	Open 17-Jan	Open 17-Jan	Open 17-Jan	Open 13-Jan	Open 22-Nov	Open 21-Nov	Open 13-May	Open 19-Dec	Open 1-Feb	Open 1-Feb	Open 1-Feb
2004/05	Open 22-Jan	Open 20-Jan	Open 20-Jan	Open 20-Jan	Open 17-Apr	Open 17-Apr	Open 18-Apr	Open 26-Apr	Open 26-Apr	Open 26-Apr	Open 9-Dec	Open 28-Nov	Open 20-Nov	Open 14-Nov	Open 6-Dec	Open 28-Jan	Open 31-Mar	Open 31-Mar
2005/06	Open 13-Dec	Open 4-Jan	Open 13-Dec	Open 21-Jan	Open 14-Jan	Open 13-Apr	Open 13-Apr	Open 13-Apr	Open 13-Apr	Open 13-Apr	Open 18-Apr	Open 22-Apr	Open 4-May	Open 3-May	Open 22-Apr	Open 26-Jan	Open 26-Jan	Open 26-Jan
2006/07	Closed 1-Apr	Closed 1-Apr	Closed 1-Apr	Closed 1-Apr	Closed 13-Apr	Closed 13-Apr	Closed 13-Apr	Closed 13-Apr	Closed 13-Apr	Closed 13-Apr	Closed 19-Apr	Closed 25-Apr	Closed 25-Apr	Closed 25-Apr	Closed 22-Apr	Closed 5-Apr	Closed 5-Apr	Closed 5-Apr
2007/08	Open 19-Dec	Open 29-Dec	Open 13-Jan	Open 25-Jan	Open 7-Feb	Open 16-Mar	Open 16-Mar	Open 22-Mar	Open 22-Mar	Open 22-Mar	Open 17-Jan	Open 25-Nov	Open 1-Dec	Open 17-Nov	Open 19-Dec	Open 5-Feb	Open 5-Feb	Open 5-Feb
2008/09	Open 22-Dec	Open 9-Apr	Open 21-Dec	Open 5-Jan	Open 3-Feb	Open 28-Feb	Open 12-Apr	Open 2-May	Open 4-May	Open 4-May	Open 8-Dec	Open 24-Nov	Open 24-Nov	Open 9-Nov	Open 22-Dec	Open 28-Jan	Open 28-Jan	Open 28-Jan
2009/10	Open 31-Mar	Open 31-Mar	Open 31-Mar	Open 31-Mar	Open 12-Apr	Open 12-Apr	Open 12-Apr	Open 12-Apr	Open 12-Apr	Open 12-Apr	Open 13-Apr	Open 15-Apr	Open 15-Apr	Open 9-May	Open 22-Dec	Open 8-Apr	Open 8-Apr	Open 8-Apr
2010/11	Open 23-Dec	Open 14-Dec	Open 14-Dec	Open 10-Jan	Open 14-Jan	Open 5-Feb	Open 16-Dec	Open 22-Dec	Open 22-Dec	Open 22-Dec	Open 16-Dec	Open 3-Dec	Open 22-Nov	Open 8-Nov	Open 22-Dec	Open 28-Jan	Open 28-Jan	Open 28-Jan
2011/12	Closed 29-Mar	Closed 29-Mar	Closed 29-Mar	Closed 29-Mar	Closed 8-Mar	Closed 8-Mar	Closed 7-Apr	Closed 7-Apr	Closed 7-Apr	Closed 7-Apr	Closed 11-Apr	Closed 11-Apr	Closed 11-Apr	Closed 11-Apr	Closed 29-Apr	Closed 1-Mar	Closed 1-Mar	Closed 1-Mar
2012/13	Open 20-Dec	Open 2-Apr	Open 2-Apr	Open 2-Apr	Open 10-Apr	Open 19-Apr	Open 2-Apr	Open 2-Apr	Open 2-Apr	Open 2-Apr	Open 30-Dec	Open 2-Apr	Open 2-Apr	Open 2-Apr	Open 2-Apr	Open 1-Feb	Open 1-Feb	Open 1-Feb
2013/14	Open 29-Mar	Open 29-Mar	Open 29-Mar	Open 29-Mar	Open 7-Mar	Open 22-Jan	Open 22-Nov	Open 22-Nov	Open 22-Nov	Open 22-Nov	Open 22-Dec	Open 11-Dec	Open 11-Dec	Open 8-Nov	Open 8-Dec	Open 31-Mar	Open 31-Mar	Open 31-Mar
2014/15	Open 19-Dec	Open 28-Dec	Open 28-Dec	Open 19-Dec	Open 7-Mar	Open 13-Feb	Open 13-Feb	Open 13-Feb	Open 13-Feb	Open 13-Feb	Open 24-Jan	Open 18-Feb	Open 13-Dec	Open 8-Nov	Open 8-Dec	Open 30-Jan	Open 30-Jan	Open 30-Jan
2015/16	Open 12-Dec	Open 17-Dec	Open 17-Dec	Open 9-Jan	Open 7-Mar	Open 14-Apr	Open 14-Apr	Open 14-Apr	Open 14-Apr	Open 14-Apr	Open 22-Apr	Open 22-Apr	Open 23-Apr	Open 23-Apr	Open 23-Apr	Open 1-Apr	Open 1-Apr	Open 1-Apr
2016/17	Open 31-Mar	Open 31-Mar	Open 31-Mar	Open 31-Mar	Open 15-Apr	Open 15-Apr	Open 15-Apr	Open 15-Apr	Open 15-Apr	Open 15-Apr	Open 12-Apr	Open 3-Dec	Open 3-Dec	Open 1-Dec	Open 12-Dec	Open 30-Jan	Open 30-Jan	Open 30-Jan
2017/18	Open 18-Dec	Open 21-Dec	Open 21-Dec	Open 17-Dec	Open 14-Mar	Open 5-Feb	Open 12-Apr	Open 12-Apr	Open 12-Apr	Open 12-Apr	Open 22-Apr	Open 24-Apr	Open 24-Apr	Open 24-Apr	Open 24-Apr	Open 9-Feb	Open 9-Feb	Open 9-Feb
2018/19	Open 17-Dec	Open 17-Dec	Open 17-Dec	Open 17-Dec	Open 3-Mar	Open 26-Jan	Open 3-Mar	Open 3-Mar	Open 3-Mar	Open 3-Mar	Open 6-Jan	Open 9-Dec	Open 9-Dec	Open 9-Dec	Open 17-Dec	Open 1-Feb	Open 1-Feb	Open 1-Feb
2019/20	Open 2-Apr	Open 2-Apr	Open 2-Apr	Open 2-Apr	Open 8-Apr	Open 8-Apr	Open 8-Apr	Open 8-Apr	Open 8-Apr	Open 8-Apr	Open 29-Apr	Open 29-Apr	Open 29-Apr	Open 29-Apr	Open 29-Apr	Open 29-Mar	Open 29-Mar	Open 29-Mar
2020/21	Open 11-Dec	Open 16-Dec	Open 16-Dec	Open 16-Dec	Open 25-Jan	Open 20-Dec	Open 13-Dec	Open 13-Dec	Open 13-Dec	Open 13-Dec	Open 22-Dec	Open 22-Dec	Open 22-Dec	Open 22-Dec	Open 22-Dec	Open 11-Dec	Open 11-Dec	Open 11-Dec
2021/22	Closed 31-Mar	Closed 31-Mar	Closed 31-Mar	Closed 31-Mar	Closed 13-Apr	Closed 13-Apr	Closed 13-Apr	Closed 13-Apr	Closed 13-Apr	Closed 13-Apr	Closed 26-Apr	Closed 26-Apr	Closed 26-Apr	Closed 26-Apr	Closed 26-Apr	Closed 31-Mar	Closed 31-Mar	Closed 31-Mar
2022/23	Open 18-Dec	Open 20-Dec	Open 20-Dec	Open 20-Dec	Open 25-Jan	Open 19-Dec	Open 7-Dec	Open 7-Dec	Open 7-Dec	Open 7-Dec	Open 24-Apr	Open 24-Apr	Open 24-Apr	Open 24-Apr	Open 24-Apr	Open 30-Jan	Open 30-Jan	Open 30-Jan
2023/24	Open 20-Mar	Open 20-Mar	Open 20-Mar	Open 20-Mar	Open 20-Mar	Open 20-Mar	Open 20-Mar	Open 20-Mar	Open 20-Mar	Open 20-Mar	Open 11-Apr	Open 11-Apr	Open 11-Apr	Open 11-Apr	Open 11-Apr	Open 31-Jan	Open 31-Jan	Open 31-Jan
Last 5 years avg	Open 28-Mar	Open 2-Apr	Open 2-Apr	Open 2-Apr	Open 14-Jan	Open 23-Dec	Open 14-Jan	Open 23-Dec	Open 23-Dec	Open 23-Dec	Open 24-Dec	Open 24-Dec	Open 24-Dec	Open 24-Dec	Open 24-Dec	Open 31-Mar	Open 31-Mar	Open 31-Mar
Last 5 years avg	Open 15-Dec	Open 21-Dec	Open 21-Dec	Open 20-Dec	Open 1-Jan	Open 9-Dec	Open 8-Mar	Open 8-Mar	Open 8-Mar	Open 8-Mar	Open 16-Feb	Open 16-Feb	Open 16-Feb	Open 16-Feb	Open 16-Feb	Open 1-Feb	Open 1-Feb	Open 1-Feb

Figure 2.7 Truck Traffic on the Tibbitt to Contwoyto Winter Road

		Gahcho Kue ⁽¹⁾	Ekati Mine	Diavik Diamond Mines Inc.	DeBeers Snap Lake	Mineral Exploration Traffic	Total
2024	Total Tonnage	61,226	64,192	78,434	2,481	93	206,426
	Total Trucks	1,927	1,952	2,452	98	4	6,433
2023	Total Tonnage	52,091	49,166	99,870	3,739	104	204,970
	Total Trucks	1,598	1,419	2,869	121	7	6,014
2022	Total Tonnage	62,203	66,451	111,228		466	240,348
	Total Trucks	1,797	1,799	3,014		23	6,633
2021	Total Tonnage	60,500	32,764	112,877		49	206,190
	Total Trucks	1,913	932	3,254		3	6,102
2020	Total Tonnage	53,835	65,312	103,500		3,655	226,302
	Total Trucks	1,705	1,993	3,209		165	7,072
2019	Total Tonnage	58,881	80,447	108,290		264	247,882
	Total Trucks	1,731	2,491	3,064		203	7,489
2018	Total Tonnage	66,951	88,612	115,060		8,080	278,703
	Total Trucks	1,972	2,610	3,389		238	8,209
2017	Total Tonnage	61,590	84,935	114,778	12,608	5,573	279,484
	Total Trucks	2,030	2,556	3,294	159	270	8,309
2016	Total Tonnage	40,100	93,403	115,352	7,509	5,995	262,359
	Total Trucks	1,640	3,294	3,941	388	344	9,607
2015	Total Tonnage	61,151	83,045	106,031	51,726	3,262	305,215
	Total Trucks	2,224	2,078	2,758	1,771	84	8,915
2014 (2)	Total Tonnage	14,092	83,561	89,817	54,737	1,721	243,928
	Total Trucks	659	2,249	2,520	1,570	71	7,069

The number of trucks indicated are "loaded truckloads" and therefore represents one-way traffic. To determine the total truck traffic these numbers should be multiplied by 2.

(1) Winter road data provided by the Tibbitt to Contwoyto Winter Road Joint Venture.

2024 season	48 days (February 12 - March 31)
2023 season	51 days (February 8 - March 31)
2022 season	59 days (January 31 - March 31)
2021 season	51 days (February 8 - March 31)
2020 season	59 days (January 31 - March 30)
2019 season	58 days (January 30 - March 29)
2018 season	61 days (January 30 - April 1)
2017 season	56 days (February 1 - March 29)
2016 season	44 days (February 9 - March 24)
2015 season	60 days (January 30 - March 31)
2014 season	61 days (January 30 - April 1)

Notes: BHP Diamond Mines Ekati Mine went into production in October of 1998.
 Diavik Diamond Mine began construction of the mine site in 2000.
 Tahera Diamond Mine suspended operations in February 2008.

(2) For data preceeding 2014, please see Appendix B 'Historical Data'.

Refer to Figure 1 for the location of this winter road

Figure 2.9 Estimated Vehicle Kilometres Travelled on Northwest Territories Highways

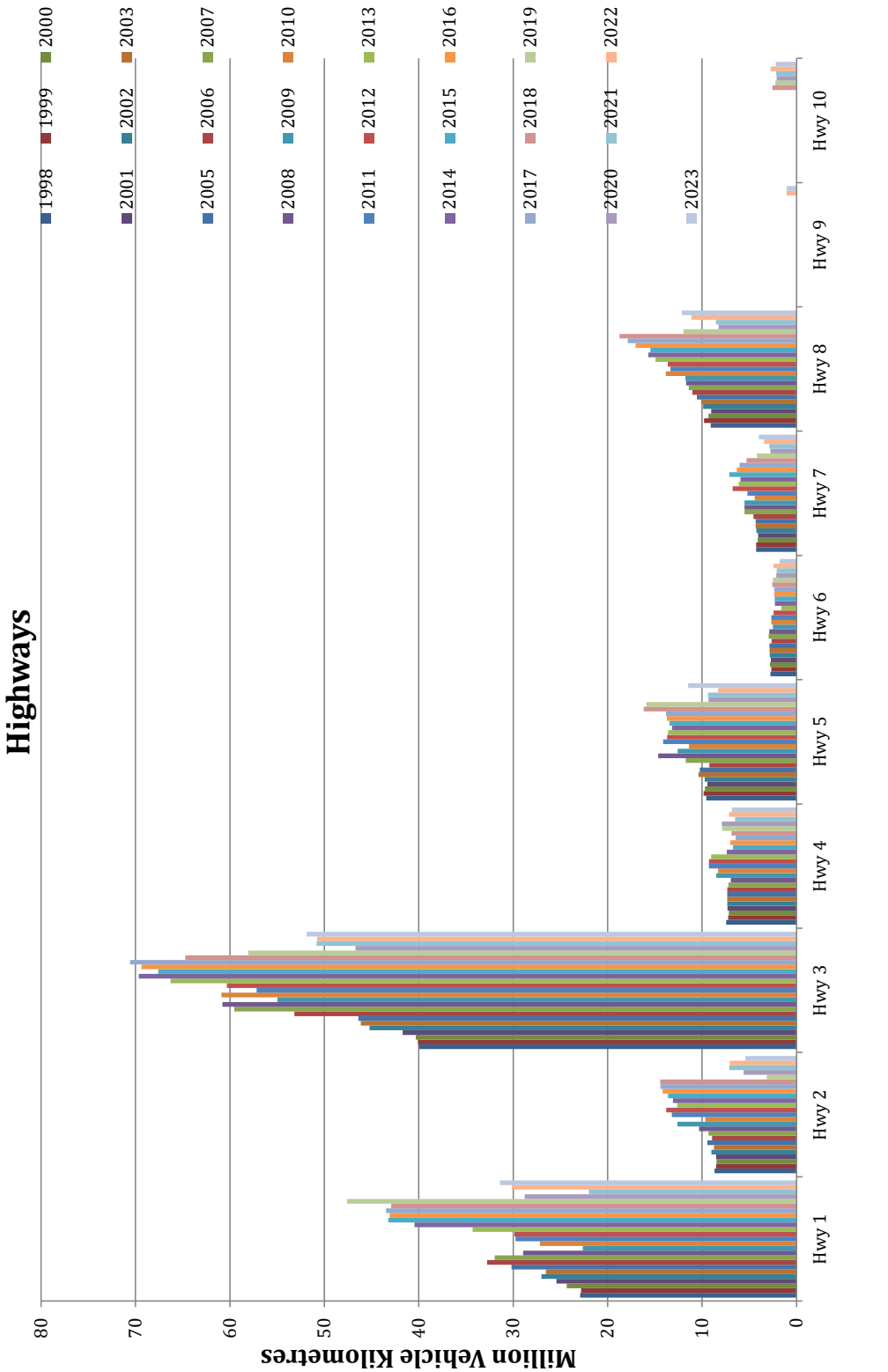
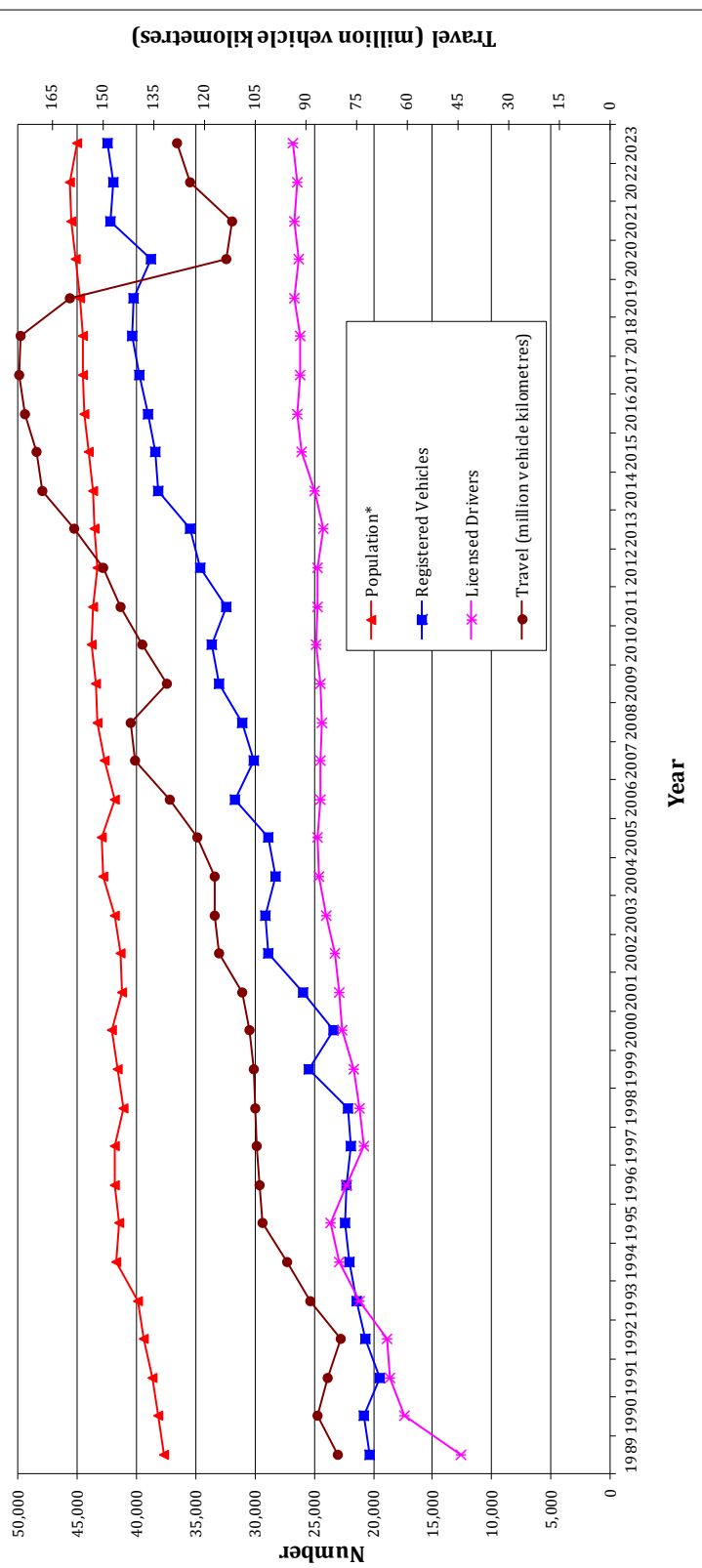


Figure 2.10 Yearly Trend in Road-Related Indicators



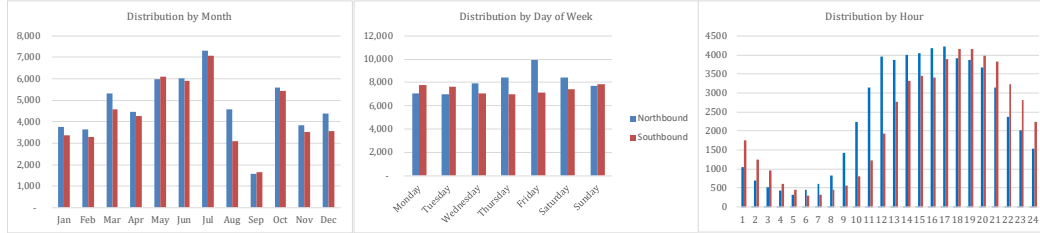
Indicators	2009	2010	2011	2012	2013	2014	2015	2016	2017	2018	2019	2020	2021	2022	2023
Population*	43,439	43,759	43,675	43,349	43,537	43,623	44,088	44,469	44,520	44,541	44,826	45,161	45,504	45,605	44,972
Registered Vehicles	33,036	33,688	32,391	34,655	35,469	38,185	38,393	38,967	39,706	40,347	40,269	38,730	42,170	41,930	42,410
Licensed Drivers	24,449	24,785	24,691	24,745	24,186	24,942	26,094	26,408	26,158	26,146	26,691	26,305	26,654	26,471	26,823
Travel (million vehicle kilometres)	131.0	138.3	144.8	149.8	158.5	167.7	169.5	173.0	174.9	174.3	159.5	113.6	111.7	124.1	128.1

*Source: Northwest Territories Stats Bureau

Figure 2.11 Traffic Characteristics at Permanent Counters

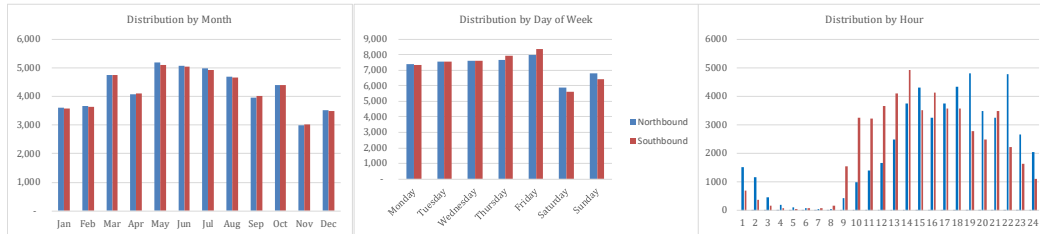
Highway 1, Kilometre 83

Vehicle Class	Monthly Traffic												Total Annual Traffic
	Jan	Feb	Mar	Apr	May	Jun	Jul	Aug	Sep	Oct	Nov	Dec	
Motorcycle, Bicycle, ATV	7	5	14	19	45	77	81	30	5	11	7	6	307
Car, Van, Light Truck, SUV	2,729	2,379	4,050	4,725	6,198	5,346	6,901	4,164	1,366	4,331	2,629	3,556	48,374
Light Truck w/ Trailer, Mobile Equipment	1,040	948	1,371	1,371	2,238	1,838	2,109	1,199	490	1,605	1,005	1,185	16,399
Straight Truck, Bus, Motorhome, Mobile Equipment	1,122	925	1,004	927	1,576	2,289	2,455	1,209	493	1,496	902	883	15,281
Tractor Trailer	2,207	2,693	3,460	1,680	2,061	2,385	2,805	1,092	861	3,588	2,816	2,302	27,950
Total	7,105	6,950	9,899	8,722	12,118	11,935	14,351	7,694	3,215	11,031	7,359	7,932	108,311
Average Daily Traffic (ADT)	229	248	319	291	391	398	463	592	357	356	245	256	AADT:332



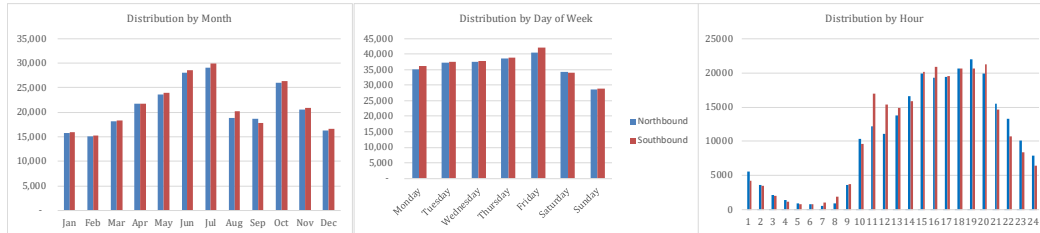
Highway 1, Kilometre 468

Vehicle Class	Monthly Traffic												Total Annual Traffic
	Jan	Feb	Mar	Apr	May	Jun	Jul	Aug	Sep	Oct	Nov	Dec	
Motorcycle, Bicycle, ATV	3	5	7	9	15	24	22	12	9	3	3	2	114
Car, Van, Light Truck, SUV	4,118	3,729	4,902	5,101	6,794	6,287	5,807	5,867	5,076	5,406	3,848	4,571	61,506
Light Truck w/ Trailer, Mobile Equipment	2,060	2,410	2,724	2,451	2,744	2,713	2,561	2,337	1,932	2,296	1,753	1,959	27,940
Straight Truck, Bus, Motorhome, Mobile Equipment	786	695	1,334	538	655	902	1,233	945	740	850	401	434	9,513
Tractor Trailer	224	450	545	113	103	192	310	188	230	235	33	36	2,659
Total	7,191	7,289	9,512	8,212	10,311	10,118	9,933	9,349	7,987	8,790	6,038	7,002	101,732
Average Daily Traffic (ADT)	232	260	307	274	333	337	320	302	266	284	201	226	AADT:279



Highway 2, Kilometre 32

Vehicle Class	Monthly Traffic												Total Annual Traffic
	Jan	Feb	Mar	Apr	May	Jun	Jul	Aug	Sep	Oct	Nov	Dec	
Motorcycle, Bicycle, ATV	40	39	43	110	280	247	400	187	162	194	80	54	1836
Car, Van, Light Truck, SUV	15,616	14,533	17,533	23,965	24,087	27,838	28,329	17,732	15,154	26,043	22,460	16,609	249,899
Light Truck w/ Trailer, Mobile Equipment	10,464	9,301	11,632	13,827	15,143	18,247	16,429	11,797	12,102	15,683	12,530	10,763	157,918
Straight Truck, Bus, Motorhome, Mobile Equipment	3,796	3,795	4,087	4,403	6,209	7,543	10,101	7,188	7,444	8,234	4,688	4,309	71,797
Tractor Trailer	1,694	2,627	3,149	1,234	1,766	2,751	3,761	2,042	1,719	2,093	1,651	1,176	25,663
Total	31,610	30,295	36,444	43,539	47,485	56,626	59,020	38,946	36,581	52,247	41,409	32,911	507,113
Average Daily Traffic (ADT)	1020	1082	1176	1451	1532	1888	1904	1256	1219	1685	1380	1062	AADT:1389



Highway 3, Kilometre 34

Vehicle Class	Monthly Traffic												Total Annual Traffic
	Jan	Feb	Mar	Apr	May	Jun	Jul	Aug	Sep	Oct	Nov	Dec	
Motorcycle, Bicycle, ATV	327	312	250	207	186	185	173	816	208	154	214	277	3309
Car, Van, Light Truck, SUV	1,781	1,887	2,120	1,343	1,667	1,690	1,661	3,431	1,951	1,629	1,641	1,656	22,457
Light Truck w/ Trailer, Mobile Equipment	114	128	133	84	104	107	87	293	135	125	104	115	1,529
Straight Truck, Bus, Motorhome, Mobile Equipment	725	883	904	625	675	686	756	1,645	794	766	746	759	9,964
Tractor Trailer	779	1,181	1,131	587	570	596	636	1,533	640	804	919	940	10,316
Total	3,726	4,391	4,538	2,846	3,202	3,264	3,313	7,718	3,728	3,478	3,624	3,747	47,575
Average Daily Traffic (ADT)	120	157	146	95	103	109	107	249	124	112	121	121	AADT:130

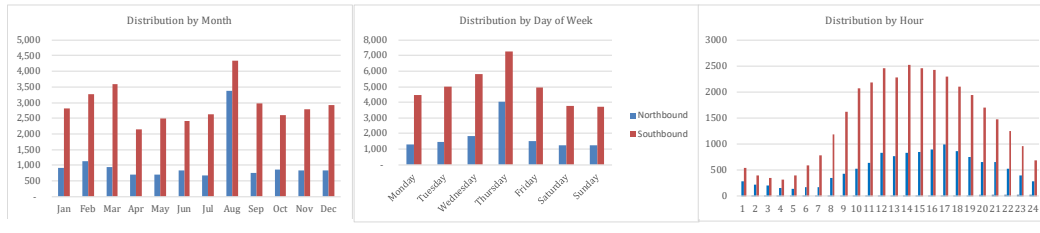
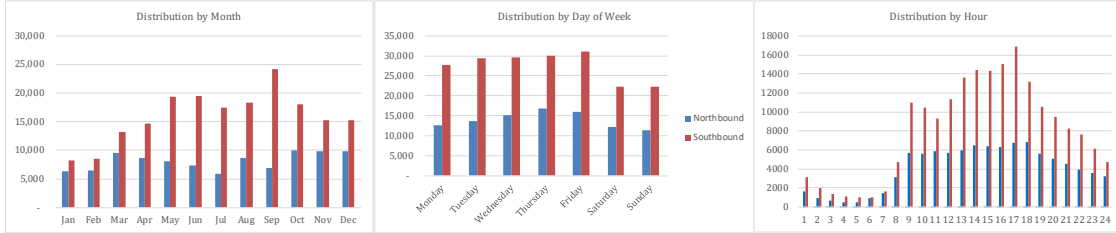


Figure 2.12 Traffic Characteristics at Permanent Counters

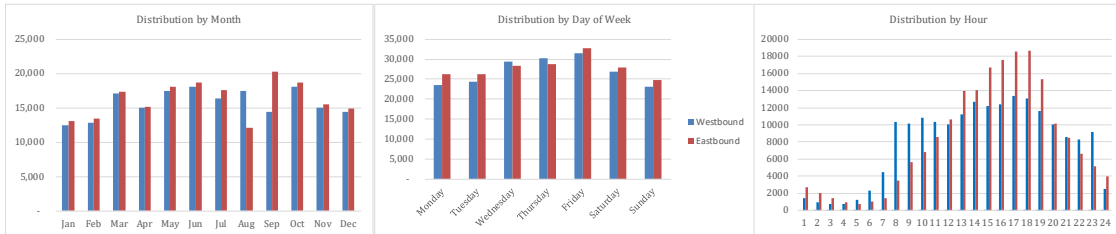
Highway 3, Kilometre 245

Vehicle Class	Monthly Traffic												Total Annual Traffic
	Jan	Feb	Mar	Apr	May	Jun	Jul	Aug	Sep	Oct	Nov	Dec	
Motorcycle, Bicycle, ATV	88	64	144	196	302	246	253	497	381	229	311	352	3063
Car, Van, Light Truck, SUV	8,057	7,671	13,171	16,074	20,251	20,285	17,805	21,234	24,404	19,029	15,678	16,027	199,686
Light Truck w/ Trailer, Mobile Equipment	1,626	1,499	2,081	1,997	1,829	1,468	1,086	1,426	1,270	2,226	2,157	2,332	20,997
Straight Truck, Bus, Motorhome, Mobile Equipment	2,151	2,124	3,161	2,901	3,059	2,849	2,378	2,509	2,908	3,466	3,390	3,178	34,074
Tractor Trailer	2,645	3,667	4,186	2,168	1,967	1,943	1,891	1,450	2,204	3,045	3,652	3,170	31,988
Total	14,567	15,025	22,743	23,336	27,408	26,791	23,413	27,116	31,167	27,995	25,188	25,059	289,808
Average Daily Traffic (ADT)	470	537	734	778	884	893	755	875	1039	903	840	808	AADT:794



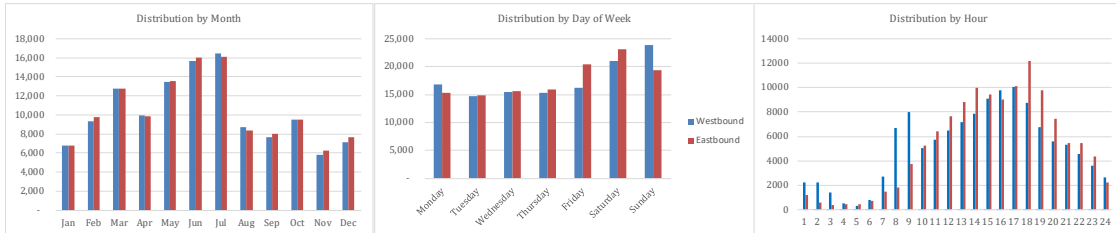
Highway 3, Kilometre 332

Vehicle Class	Monthly Traffic												Total Annual Traffic
	Jan	Feb	Mar	Apr	May	Jun	Jul	Aug	Sep	Oct	Nov	Dec	
Motorcycle, Bicycle, ATV	8	8	29	29	96	160	187	98	58	74	29	11	787
Car, Van, Light Truck, SUV	13,697	13,561	18,333	17,573	20,670	20,762	18,441	15,340	18,697	18,581	15,043	15,648	206,346
Light Truck w/ Trailer, Mobile Equipment	6,187	5,931	8,109	7,361	8,413	8,502	7,150	7,070	7,606	8,742	8,092	7,962	91,125
Straight Truck, Bus, Motorhome, Mobile Equipment	2,980	2,920	3,663	3,110	4,212	4,894	5,396	4,880	5,725	5,435	3,893	2,896	50,004
Tractor Trailer	2,734	3,874	4,324	2,051	2,246	2,440	2,856	2,187	2,659	3,848	3,530	2,858	35,607
Total	25,606	26,294	34,458	30,124	35,637	36,758	34,030	29,575	34,745	36,680	30,587	29,375	383,869
Average Daily Traffic (ADT)	826	939	1112	1004	1150	1225	1098	954	1158	1183	1020	948	AADT:1052



Highway 4, Kilometre 10

Vehicle Class	Monthly Traffic												Total Annual Traffic
	Jan	Feb	Mar	Apr	May	Jun	Jul	Aug	Sep	Oct	Nov	Dec	
Motorcycle, Bicycle, ATV	10	9	16	35	134	124	89	76	47	33	12	13	598
Car, Van, Light Truck, SUV	7,580	7,106	9,920	11,282	15,522	16,533	16,996	10,243	8,649	11,525	7,632	8,535	131,523
Light Truck w/ Trailer, Mobile Equipment	3,435	3,792	4,920	4,967	6,775	7,963	7,756	3,709	3,720	4,337	2,883	3,306	57,563
Straight Truck, Bus, Motorhome, Mobile Equipment	2,444	2,789	4,044	3,410	4,343	6,506	7,049	2,887	3,089	2,910	1,480	2,800	43,751
Tractor Trailer	87	5,410	6,546	113	195	537	645	180	147	175	68	107	14,210
Total	13,556	19,106	25,446	19,807	26,969	31,663	32,535	17,095	15,652	18,980	12,075	14,761	247,645
Average Daily Traffic (ADT)	437	682	821	660	870	1055	1050	551	522	612	403	476	AADT:678



Highway 5, Kilometre 1

Vehicle Class	Monthly Traffic												Total Annual Traffic
	Jan	Feb	Mar	Apr	May	Jun	Jul	Aug	Sep	Oct	Nov	Dec	
Motorcycle, Bicycle, ATV	5	7	5	48	61	80	144	39	38	33	13	29	502
Car, Van, Light Truck, SUV	4,242	3,670	4,744	11,779	11,339	12,701	12,792	7,320	8,181	12,311	10,475	5,441	105,013
Light Truck w/ Trailer, Mobile Equipment	2,645	2,670	3,114	6,196	4,579	3,879	2,809	2,112	2,993	5,671	5,929	3,493	46,090
Straight Truck, Bus, Motorhome, Mobile Equipment	1,765	1,601	1,742	2,920	5,599	6,384	6,077	4,082	4,497	6,024	3,305	1,870	45,866
Tractor Trailer	276	269	858	346	1,259	1,572	2,118	1,278	867	1,228	614	264	10,949
Total	8,933	8,217	10,463	21,307	22,837	24,616	23,940	14,831	16,576	25,267	20,336	11,097	208,420
Average Daily Traffic (ADT)	288	293	338	710	737	821	772	478	553	815	678	358	AADT:571

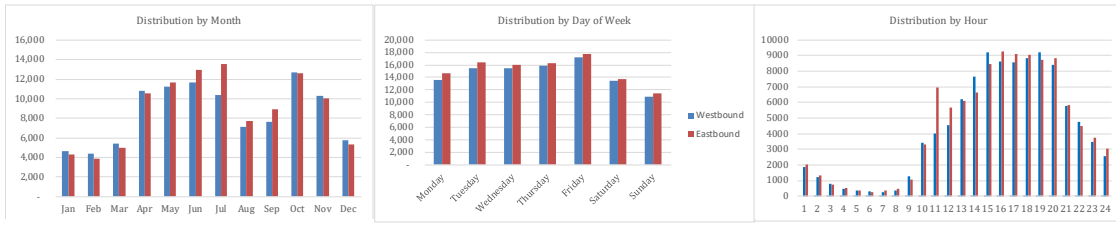
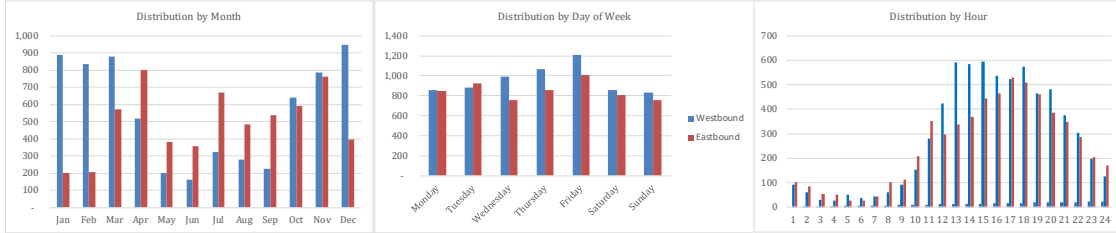


Figure 2.13 Traffic Characteristics at Permanent Counters

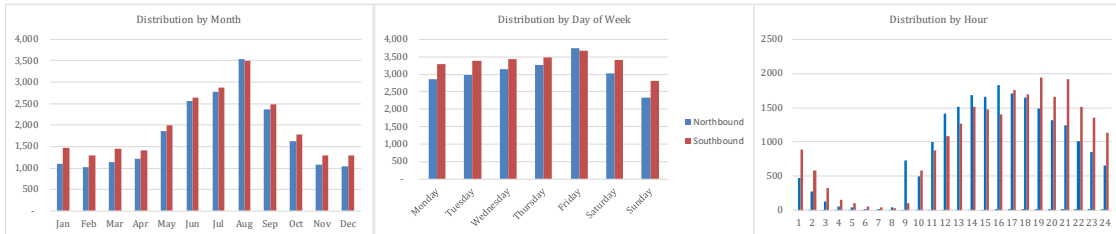
Highway 5, Kilometre 62

Vehicle Class	Monthly Traffic												Total Annual Traffic
	Jan	Feb	Mar	Apr	May	Jun	Jul	Aug	Sep	Oct	Nov	Dec	
Motorcycle, Bicycle, ATV	71	70	89	50	32	36	39	42	56	51	66	82	684
Car, Van, Light Truck, SUV	393	368	586	748	306	273	460	328	366	485	855	522	5,690
Light Truck w/Trailer, Mobile Equipment	125	147	151	90	32	26	38	30	33	84	170	156	1,082
Straight Truck, Bus, Motorhome, Mobile Equipment	410	357	481	313	149	113	254	187	186	380	330	455	3,615
Tractor Trailer	91	104	144	120	67	73	199	177	127	235	128	130	1,595
Total	1,090	1,046	1,451	1,321	586	521	990	764	768	1,235	1,549	1,345	12,666
Average Daily Traffic (ADT)	35	37	47	44	25	25	32	25	26	40	52	43	AADT:36



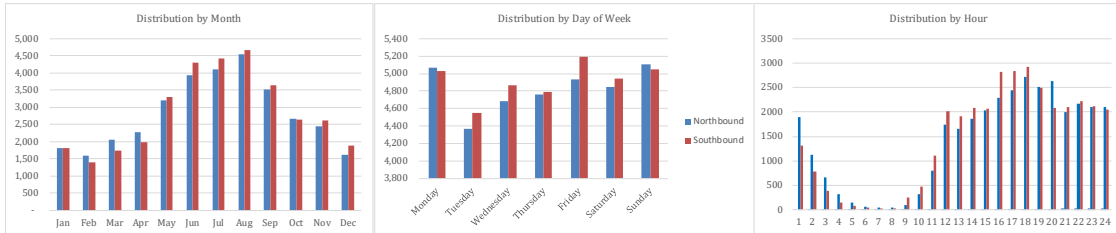
Highway 7, Kilometre 37

Vehicle Class	Monthly Traffic												Total Annual Traffic
	Jan	Feb	Mar	Apr	May	Jun	Jul	Aug	Sep	Oct	Nov	Dec	
Motorcycle, Bicycle, ATV	3	7	13	26	46	54	34	59	58	11	3	3	369
Car, Van, Light Truck, SUV	1,102	1,032	1,270	1,394	1,634	2,084	1,993	2,478	2,050	1,764	1,257	1,401	19,459
Light Truck w/Trailer, Mobile Equipment	734	623	663	710	1,220	1,716	1,741	2,002	1,478	978	598	530	12,993
Straight Truck, Bus, Motorhome, Mobile Equipment	541	438	467	393	856	1,068	1,409	1,648	981	552	485	380	9,218
Tractor Trailer	195	228	174	92	98	277	481	857	275	56	33	20	2,786
Total	2,575	2,328	2,587	2,615	3,854	5,199	5,658	7,044	4,842	3,405	2,384	2,334	44,825
Average Daily Traffic (ADT)	83	83	83	87	124	173	183	227	161	110	79	75	AADT:123



Highway 8, Kilometre 84

Vehicle Class	Monthly Traffic												Total Annual Traffic
	Jan	Feb	Mar	Apr	May	Jun	Jul	Aug	Sep	Oct	Nov	Dec	
Motorcycle, Bicycle, ATV	2	2	2	3	6	8	11	10	37	5	4	3	79
Car, Van, Light Truck, SUV	1,485	1,227	1,404	1,582	2,396	2,836	3,195	3,490	4,261	2,106	2,257	1,622	27,100
Light Truck w/Trailer, Mobile Equipment	1,414	1,168	1,405	1,422	2,484	2,667	2,372	2,701	279	1,691	1,839	1,254	21,464
Straight Truck, Bus, Motorhome, Mobile Equipment	493	407	707	894	1,416	2,187	2,467	2,638	1,425	1,095	887	553	15,610
Tractor Trailer	226	187	288	360	201	529	467	364	1,171	416	83	68	3,927
Total	3,621	2,991	3,805	4,262	6,504	8,227	8,512	9,204	7,173	5,312	5,069	3,500	68,180
Average Daily Traffic (ADT)	117	107	123	142	210	274	275	297	239	171	169	113	AADT:187



Highway 8, Kilometre 260

Vehicle Class	Monthly Traffic												Total Annual Traffic
	Jan	Feb	Mar	Apr	May	Jun	Jul	Aug	Sep	Oct	Nov	Dec	
Motorcycle, Bicycle, ATV	6	17	10	7	5	81	106	66	25	14	19	14	370
Car, Van, Light Truck, SUV	13,499	13,556	16,866	17,693	19,250	21,561	25,187	24,626	21,892	17,788	15,688	13,609	221,215
Light Truck w/Trailer, Mobile Equipment	4,485	4,672	6,130	6,313	4,694	5,100	6,929	6,401	5,758	5,634	5,198	3,692	65,006
Straight Truck, Bus, Motorhome, Mobile Equipment	2,892	2,866	3,356	3,097	2,517	4,001	4,734	4,837	4,027	3,721	3,431	3,174	42,653
Tractor Trailer	365	443	612	599	299	552	683	751	754	518	140	142	5,858
Total	21,247	21,554	26,974	27,709	26,765	31,295	37,639	36,681	32,456	27,675	24,476	20,631	335,102
Average Daily Traffic (ADT)	685	770	870	924	863	1043	1214	1183	1082	893	816	666	AADT:918

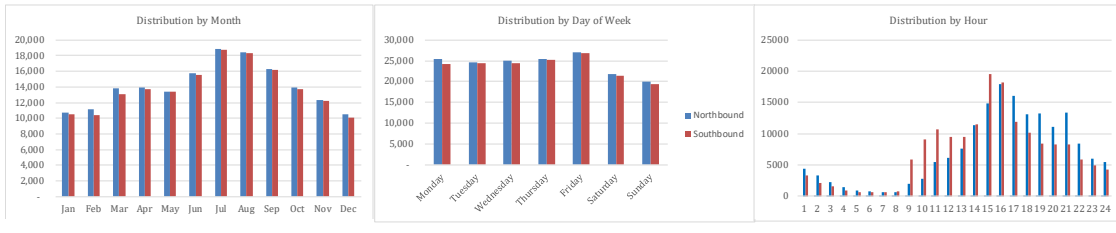
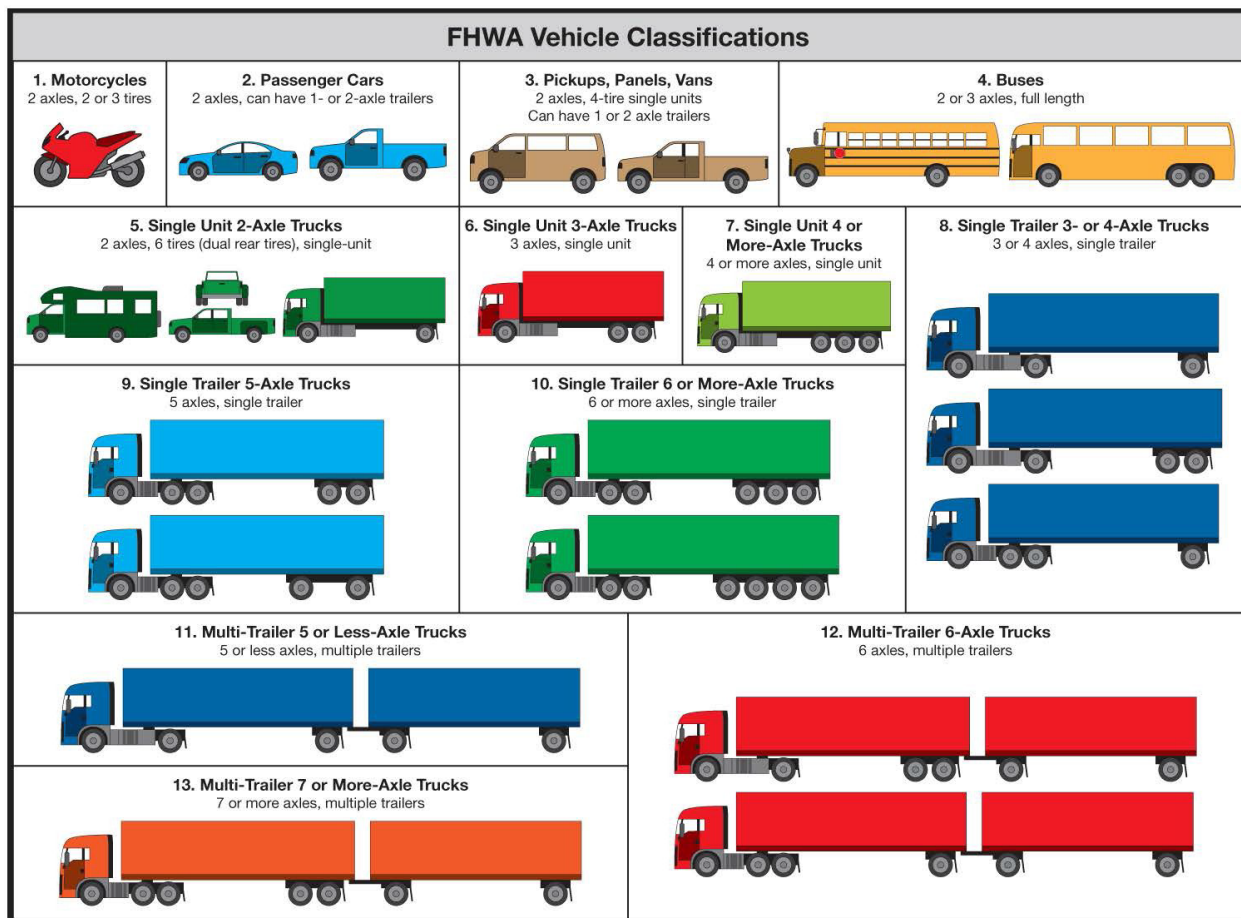
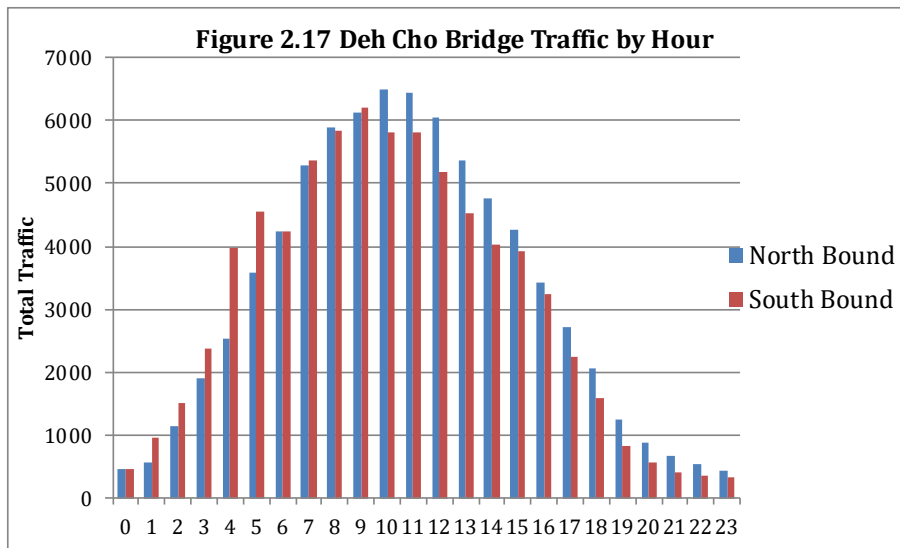
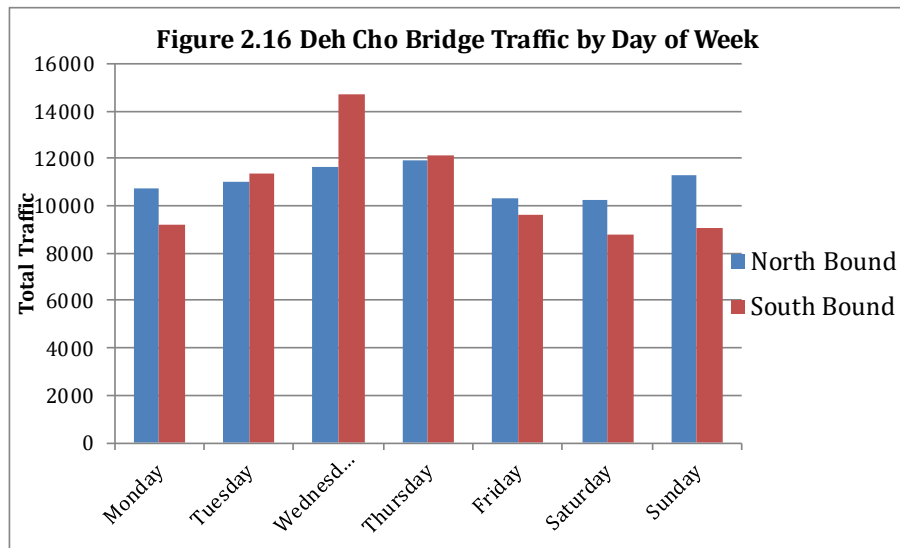
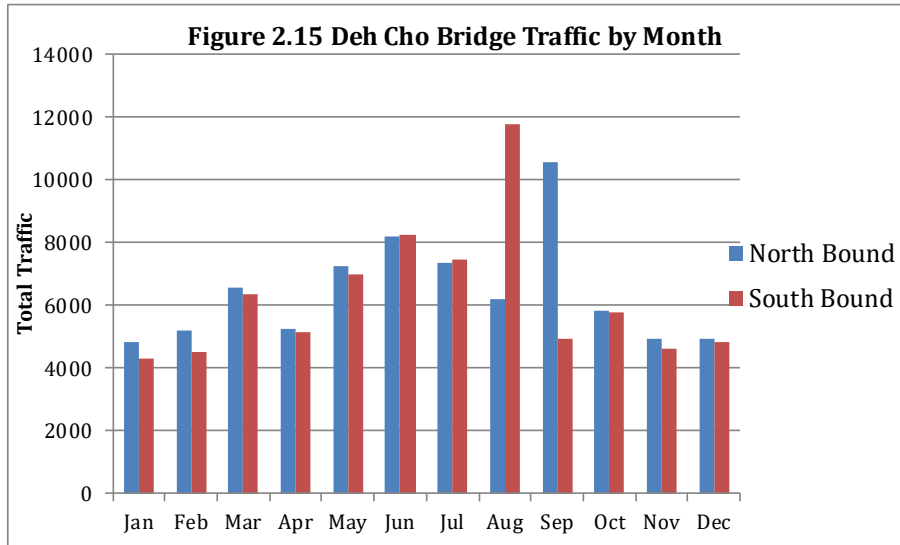


Figure 2.14 Deh Cho Bridge Traffic by Month and Federal Highway Administration (FHWA) Vehicle Class

FHWA Vehicle Class	Monthly Traffic												Total Annual Traffic
	Jan	Feb	Mar	Apr	May	Jun	Jul	Aug	Sep	Oct	Nov	Dec	
1	0	0	0	1	1	7	2	3	1	1	0	1	17
2	570	622	472	430	457	675	455	596	606	407	1,037	1,366	7,693
3	2,746	3,160	4,344	3,545	6,064	5,844	4,605	7,370	6,334	4,833	3,890	4,765	57,500
4	16	14	17	13	5	3	13	1	2	7	10	7	108
5	2,910	2,203	3,898	4,414	5,584	7,578	6,929	7,866	6,129	3,392	1,987	1,808	54,698
6	212	213	142	147	127	133	153	217	119	164	155	102	1,884
7	4	5	6	3	25	10	57	40	22	5	3	9	189
8	19	10	14	10	26	26	29	19	12	23	17	9	214
9	545	539	705	528	592	511	518	358	545	609	469	358	6,277
10	484	617	824	453	483	450	550	399	455	628	395	315	6,053
11	0	0	0	0	0	0	0	0	0	0	0	0	0
12	0	0	0	0	0	0	0	0	0	0	0	0	0
13	1,614	2,339	2,499	848	879	1,163	1,515	1,065	1,254	1,532	1,595	1,056	17,359
Total	9,120	9,722	12,921	10,392	14,243	16,400	14,826	17,934	15,479	11,601	9,558	9,796	151,992
ADT	294	347	417	346	459	547	478	579	516	374	319	316	AA DT: 416





3.0: Vehicle Movements at Ferries and Weigh Scales

Figure 3.1 Average Daily Traffic on Highway Ferries

Ferry Crossing	Location	Ferry	Vehicle Type	Year											
				2023	2022	2021	2020	2019	2018	2017	2016	2015	2014	2013	2012
Liard River	Highway 1, near Fort Simpson	M.V. Lafferty	Commercial Vehicles	13	21	19	16	15	28	17	17	23	20	21	37
			Light Vehicles	85	91	91	88	90	117	90	97	108	91	91	128
			Trailers Towed	6	9	7	6	9	10	10	9	10	8	9	17
			Total	104	121	118	110	113	156	117	123	140	119	121	182
Mackenzie River	Highway 8, near Tsiigehtchic	M.V. Louis Cardinal	Commercial Vehicles	33	34	16	18	24	24	17	19	18	18	10	25
			Light Vehicles	124	122	97	89	108	136	115	108	93	99	95	106
			Trailers Towed	11	7	2	3	17	18	8	6	6	5	4	8
			Total	168	163	115	110	149	178	140	133	117	122	109	140
Peel River	Highway 8, near Fort McPherson	C.F. Abraham Francis	Commercial Vehicles	24	21	14	13	20	22	20	22	24	15	20	30
			Light Vehicles	85	86	64	51	107	84	84	75	81	79	91	87
			Trailers Towed	14	10	2	1	14	9	5	8	8	11	5	7
			Total	123	116	80	65	140	115	109	106	113	105	116	124
Mackenzie River	Highway 1, near Camsell Bend	M.V. Johnny Berens	Commercial Vehicles	2	4	2	2	2	2	2	2	3	2	7	15
			Light Vehicles	16	17	15	16	17	18	20	19	22	19	15	4
			Trailers Towed	1	1	1	1	1	1	2	1	1	1	2	1
			Total	20	23	18	19	20	22	23	23	26	22	23	21

Figure 3.2
Average Daily Traffic on Highway Ferries

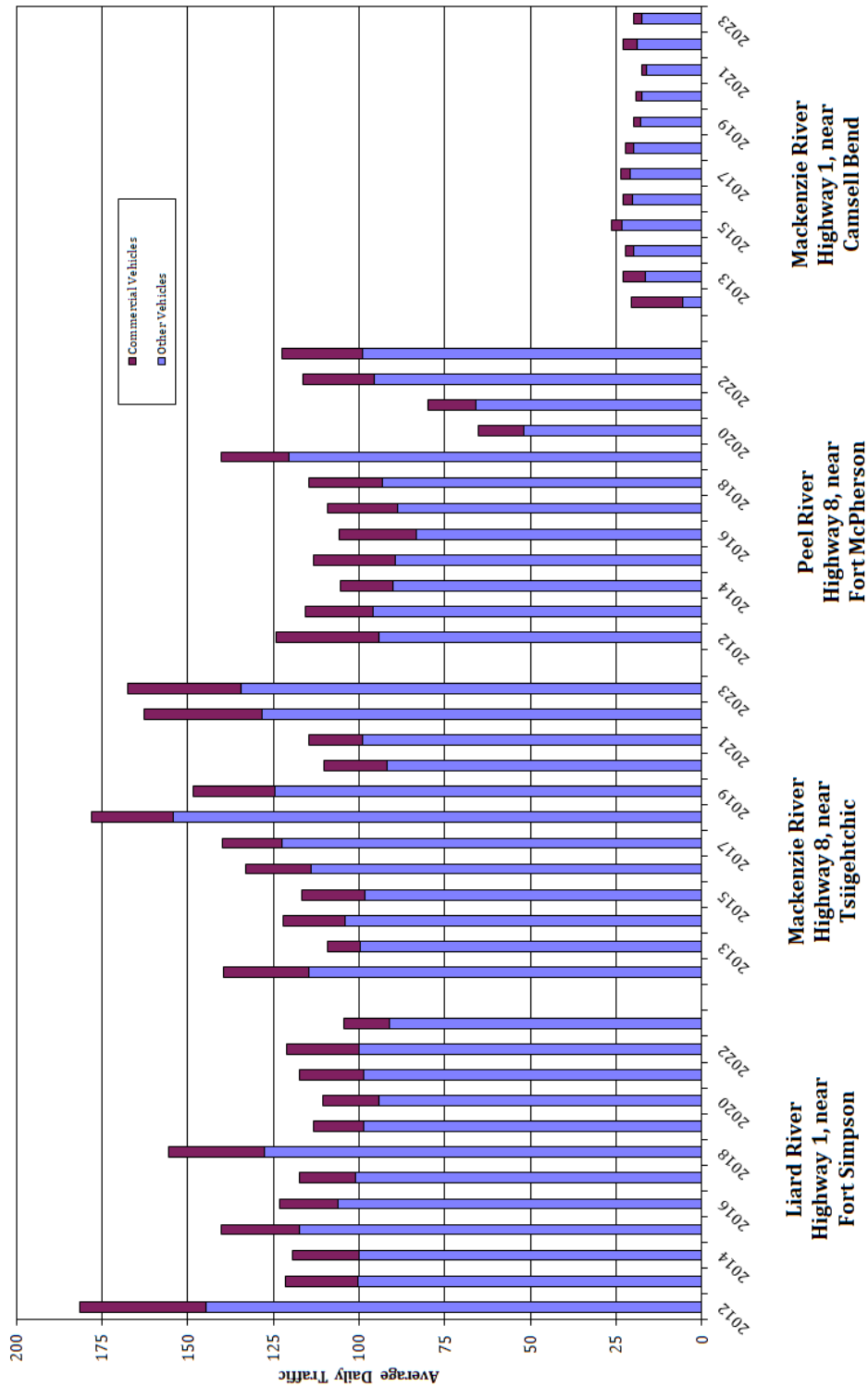


Figure 3.3 Vehicle Classification Data at Liard River Ferry (Highway 1 near Fort Simpson, M.V. Lafferty)

Operating Season	Month	Total Traffic	Average Daily Traffic	Light Vehicles	Trailers Towed	Truck Single Unit	Truck Trailer	Percent of Total		Bus	Other	Total Commercial	Number of Passengers	
								Truck Semi	Over-size					
13-May-23	28-Oct-23	1,657	87	85.40	5.55	3.62	3.80	0.00	0.00	0.00	1.63	9.05	2,747	
	Jun-23	3,197	107	80.04	6.54	4.22	5.82	0.13	0.06	0.06	3.19	13.42	5,223	
	Jul-23	3,633	117	76.88	6.74	6.17	7.98	0.30	0.03	0.03	1.90	16.38	6,204	
	Aug-23	3,202	103	82.54	6.03	3.81	5.97	0.06	0.12	0.00	1.47	11.43	5,709	
	Sep-23	2,955	99	81.15	6.02	3.86	7.11	0.10	0.00	0.00	1.76	12.83	4,990	
Oct-23	2,896	103	85.95	3.14	3.80	5.70	0.07	0.00	0.00	1.35	10.91	4,705		
Total		17,540	104	81.51	5.75	4.36	6.30	0.13	0.04	0.04	1.92	12.74	29,578	
17-May-22	1-Nov-22	1,296	86	85.03	6.79	3.86	2.31	0.15	0.00	0.00	1.85	8.18	2,222	
	Jun-22	3,334	111	76.30	8.01	5.25	8.22	0.06	0.03	0.03	2.13	15.69	5,778	
	Jul-22	4,040	130	70.50	8.74	6.16	12.10	0.42	0.10	0.10	1.98	20.77	6,607	
	Aug-22	4,813	155	70.93	7.25	7.92	12.18	0.21	0.04	0.04	1.48	21.82	8,213	
	Sep-22	3,688	123	76.30	7.27	4.93	9.79	0.43	0.05	0.05	1.22	16.43	6,054	
	Oct-22	3,004	97	80.99	5.83	5.16	5.73	0.03	0.03	0.03	2.23	13.18	4,848	
	Nov-22	152	132	92.76	1.32	3.29	2.63	0.00	0.00	0.00	0.00	5.92	238	
	Total		20,327	121	75.25	7.39	5.89	9.43	0.24	0.05	0.05	1.76	17.36	33,960
	18-May-21	3-Nov-21	1,401	100	87.65	5.14	3.07	2.78	0.00	0.07	0.07	1.28	7.21	2,560
		Jun-21	3,521	117	80.77	5.51	5.08	6.05	0.03	0.00	0.00	1.37	13.72	5,902
Jul-21		3,817	123	74.22	6.24	3.96	14.23	0.05	0.21	0.21	1.10	19.54	6,420	
Aug-21		3,867	125	71.55	6.08	3.93	17.69	0.03	0.05	0.05	0.67	22.37	6,447	
Sep-21		3,473	116	78.95	7.14	4.89	8.03	0.12	0.00	0.00	0.86	13.91	5,946	
Oct-21		3,422	110	80.22	5.82	5.20	7.92	0.12	0.00	0.00	0.73	13.97	5,341	
Nov-21		363	121	81.27	4.13	6.06	6.89	0.00	0.00	0.00	1.65	14.60	545	
Total			19,864	118	77.80	6.05	4.51	10.34	0.06	0.06	0.06	1.19	16.15	33,161
12-May-20		1-Nov-20	19,102	110	79.75	5.59	4.52	8.40	0.06	0.01	0.01	1.66	14.66	32,410
		3-Nov-19	19,468	113	79.45	7.57	4.26	6.84	0.07	0.13	0.13	1.67	12.98	36,770
	29-Oct-18	26,603	156	75.50	6.63	7.52	8.36	0.29	0.38	0.38	1.33	17.87	53,567	
	3-Nov-17	20,086	117	76.93	8.93	4.23	7.54	0.49	0.07	0.07	1.81	14.14	37,777	
	1-Nov-16	21,678	123	78.67	7.55	4.41	7.45	0.23	0.08	0.08	1.62	13.77	39,861	
	5-Nov-15	25,229	140	76.95	6.85	5.24	7.63	0.29	0.82	0.82	2.23	16.21	44,906	
	4-Nov-14	21,012	119	76.50	7.11	4.79	9.15	0.12	0.14	0.14	2.18	16.39	40,316	
	8-Nov-13	21,016	121	75.17	7.33	5.72	9.18	0.36	0.07	0.07	2.18	17.51	39,113	
	26-Oct-12	29,959	182	70.46	9.20	3.25	14.41	0.30	0.25	0.25	2.13	20.34	54,407	
	3-Nov-11	23,938	138	67.05	6.46	16.58	7.77	0.30	0.13	0.13	1.72	26.49	43,016	
8-Nov-10	21,402	118	76.75	6.52	4.27	9.98	0.29	0.21	0.21	1.99	16.74	41,124		
4-Nov-09	21,318	123	77.77	6.65	3.62	9.18	0.80	0.20	0.20	1.79	15.58	40,876		

Figure 3.4 Vehicle Classification Data at Mackenzie River Ferry (Highway 8 near Tsigehtchic, M.V. Louis Cardinal)

Operating Season	Month	Total Traffic	Average Daily Traffic	Light Vehicles	Trailers Towed	Truck Single Unit	Percent of Total					Number of Passengers
							Truck Semi Trailer	Over size	Bus	Other	Total Commercial	
5-Jun-23	30-Oct-23	4,035	155	65.15	6.27	1.96	17.08	0.82	0.00	8.72	28.57	7,271
	Jun-23	6,685	216	64.67	10.46	0.72	11.01	0.36	0.01	12.77	24.88	13,993
	Jul-23	6,283	203	78.27	6.16	2.18	9.80	0.84	0.06	2.67	15.57	15,691
	Aug-23	4,454	148	82.35	3.52	4.45	8.02	0.43	0.07	1.17	14.12	10,304
	Sep-23	3,179	106	83.36	1.98	3.27	10.41	0.03	0.00	0.94	14.66	6,432
	Oct-23											
	Total	24,636	168	73.83	6.33	2.30	11.08	0.53	0.03	5.91	19.84	53,691
7-Jun-22	31-Oct-22	3,838	160	68.66	4.53	1.51	10.34	0.42	5.05	9.48	26.81	7,184
	Jun-22	6,368	205	76.62	5.75	1.16	8.34	0.02	0.22	7.90	17.64	14,520
	Jul-22	6,460	208	67.65	3.65	2.60	21.52	0.17	0.20	4.21	28.70	14,231
	Aug-22	3,946	132	85.48	2.89	3.09	6.97	0.20	0.13	1.24	11.63	9,069
	Sep-22	3,129	101	79.45	3.04	2.46	13.07	0.29	0.26	1.44	17.51	7,118
	Oct-22											
	Total	23,741	163	74.74	4.15	2.10	12.64	0.19	0.99	5.19	21.12	52,122
9-Jun-21	5-Nov-21	2,668	121	86.58	1.54	1.12	7.46	1.31	0.00	1.99	11.88	6,873
	Jun-21	3,678	119	83.90	1.33	4.35	7.91	0.24	0.22	2.04	14.76	9,312
	Jul-21	3,922	127	85.42	2.19	3.82	6.71	0.08	0.00	1.78	12.39	10,178
	Aug-21	3,177	106	87.00	1.64	1.57	8.34	0.28	0.03	1.13	11.36	7,921
	Sep-21	3,209	104	80.80	1.65	2.84	12.34	0.12	0.03	2.21	17.54	7,287
	Oct-21	415	83	84.82	0.96	3.13	6.27	0.00	0.00	4.82	14.22	1,009
	Nov-21											
	Total	17,069	115	84.69	1.67	2.89	8.44	0.35	0.06	1.90	13.64	42,580
3-Jun-20	29-Oct-20	16,313	110	81.12	2.27	3.81	8.77	2.30	0.17	1.56	16.61	36,811
28-May-19	2-Nov-19	23,463	149	72.51	11.38	3.25	5.26	1.31	0.23	6.06	16.11	59,654
27-May-18	2-Nov-18	28,296	178	76.59	10.07	2.30	4.42	1.17	0.28	5.18	13.34	65,960
4-Jun-17	4-Nov-17	21,400	140	81.91	5.58	1.48	4.74	2.02	0.41	3.86	12.50	43,330
29-May-16	7-Dec-16	25,531	133	81.44	4.16	1.52	8.02	2.15	0.29	2.41	14.39	40,883
1-Jun-15	15-Dec-15	22,979	117	79.36	4.86	1.80	7.75	2.21	0.23	3.79	15.78	38,138
1-Jun-14	5-Dec-14	22,858	122	81.00	4.20	1.53	7.17	2.38	0.14	3.58	14.80	32,523
5-Jun-13	7-Dec-13	20,198	109	87.28	3.99	2.09	3.08	0.41	0.00	3.15	8.73	35,095
3-Jun-12	29-Oct-12	20,660	140	76.15	5.96	5.33	7.71	0.11	0.41	4.33	17.88	36,382
3-Jun-11	31-Oct-11	21,304	142	81.50	4.63	1.69	9.82	0.11	0.10	2.15	13.87	38,688
26-May-10	28-Oct-10	24,266	157	69.19	5.52	4.37	17.21	0.19	0.15	3.38	25.29	42,975
3-Jun-09	25-Oct-09	21,001	146	74.96	6.69	4.64	10.57	0.34	0.06	2.73	18.35	40,431

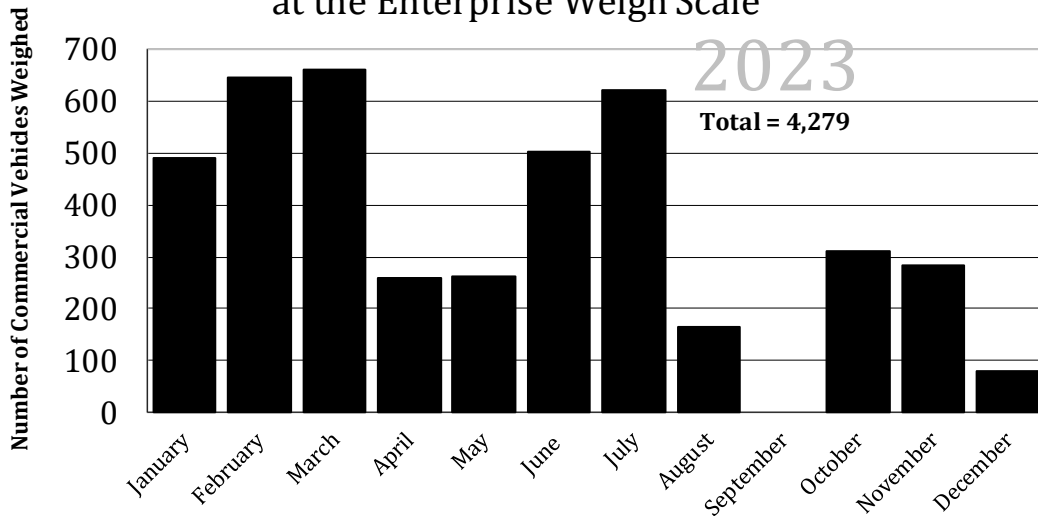
Figure 3.5 Vehicle Classification Data at Peel River Ferry (Highway 8 near Fort McPherson, C.F. Abraham Francis)

Operating Season	Month	Total Traffic	Average Daily Traffic	Light Vehicles	Trailers Towed	Truck Single Unit	Truck Semi Trailer	Percent of Total				Total Commercial	Number of Passengers
								Bus	Other	Over size	Trailer		
5-Jun-23	2-Nov-23	3,002	115	58.79	13.22	2.07	10.99	1.13	0.00	0.00	13.79	27.98	5,030
	Jul-23	4,436	143	61.99	17.16	1.38	8.32	0.54	0.07	0.00	10.55	20.85	8,725
	Aug-23	5,843	188	75.44	10.97	3.08	7.70	0.91	0.07	0.00	3.83	13.59	12,488
	Sep-23	3,153	105	75.29	7.74	3.08	10.37	0.79	0.10	0.00	2.63	16.97	5,589
	Oct-23	1,911	62	74.57	2.46	4.97	15.12	0.99	0.00	0.00	1.88	22.97	2,904
	Nov-23	49	25	81.63	0.00	14.29	4.08	0.00	0.00	0.00	0.00	18.37	82
	Total	18,394	123	69.38	11.36	2.09	9.61	0.84	0.05	0.00	6.66	19.26	34,818
10-Jun-22	3-Nov-22	2,564	122	62.40	13.42	1.40	8.11	0.08	0.43	0.00	14.16	24.18	4,482
	Jul-22	5,541	179	75.53	8.86	0.60	5.63	0.02	0.14	0.00	9.22	15.61	12,385
	Aug-22	4,417	142	76.52	8.60	0.63	5.09	0.00	0.18	0.00	8.97	14.87	9,125
	Sep-22	2,813	94	80.02	6.58	1.35	8.53	0.14	0.14	0.00	3.23	13.40	5,227
	Oct-22	1,543	50	64.87	2.72	2.66	23.20	0.71	0.26	0.00	5.57	32.40	2,476
	Nov-22	103	34	83.50	5.83	1.94	4.85	0.00	0.00	0.00	3.88	10.68	183
	Total	16,981	116	73.63	8.53	1.05	7.94	0.11	0.21	0.00	8.54	17.84	33,878
3-Jun-21	8-Nov-21	1,934	69	67.74	6.57	2.53	13.96	0.05	0.16	0.00	9.00	25.70	3,641
	Jul-21	2,743	88	83.67	1.86	1.02	11.30	0.22	0.00	0.00	1.93	14.47	5,669
	Aug-21	3,499	113	87.14	2.06	1.03	7.86	0.00	0.11	0.00	1.80	10.80	7,458
	Sep-21	2,276	76	79.53	1.41	1.85	14.24	0.26	0.00	0.00	2.72	19.07	4,204
	Oct-21	1,931	62	72.29	2.18	0.98	21.03	0.00	0.05	0.00	3.47	25.53	3,158
	Nov-21	253	32	81.82	2.77	2.37	9.88	0.00	0.00	0.00	3.16	15.42	443
	Total	12,636	80	79.67	2.62	1.42	12.74	0.10	0.06	0.00	3.38	17.71	24,573
3-Jun-20	2-Nov-20	9,888	65	77.74	2.26	1.62	15.86	0.22	0.08	0.00	2.22	20.00	19,783
	18-Oct-19	19,354	140	76.00	9.77	0.61	7.21	0.09	0.25	0.00	6.07	14.23	38,464
	2-Jun-18	18,112	115	73.40	7.77	1.64	9.24	0.15	0.29	0.00	7.51	18.82	34,247
	8-Jun-17	16,800	109	76.90	4.45	1.68	14.43	0.07	0.18	0.00	2.28	18.65	31,175
	2-Jun-16	19,331	106	70.77	7.98	1.54	15.09	0.11	0.14	0.00	4.36	21.25	37,159
	8-Dec-15	21,326	113	71.83	7.00	1.58	14.39	0.14	0.08	0.00	4.99	21.18	41,205
	3-Jun-15	19,515	105	75.13	10.41	1.05	9.07	0.62	0.49	0.00	3.23	14.46	34,461
	30-May-14	21,738	116	78.59	4.28	1.63	13.49	0.40	0.10	0.00	1.52	17.13	33,591
	8-Jun-13	18,613	124	69.84	6.01	1.99	18.66	0.18	0.27	0.00	3.04	24.15	39,456
	3-Jun-12	24,974	157	66.93	4.69	1.76	24.12	0.14	0.10	0.00	2.26	28.39	47,157
	1-Jun-11	22,912	151	66.38	5.84	2.51	21.18	0.21	0.16	0.00	3.73	27.78	44,624
	1-Jun-10	18,839	120	73.69	5.62	3.03	13.03	0.20	0.19	0.00	4.25	20.69	40,127
	1-Jun-09												

Figure 3.6 Vehicle Classification Data at Mackenzie River Ferry (Highway 1, road to Wrigley, near Camsell Bend M.V. Johnny Berens)

Operating Season	Month	Total Traffic	Average Daily Traffic	Light Vehicles	Trailers Towed	Truck Single Unit	Percent of Total			Other	Total Commercial	Number of Passengers
							Truck	Truck Semi	Trailer			
29-May-23	28-Oct-23	44	15	77.27	4.55	13.64	0.00	0.00	0.00	4.55	18.18	90
		659	22	84.07	5.46	4.86	3.34	0.00	0.00	2.28	10.47	1,485
		511	16	84.54	4.70	1.57	7.63	0.00	0.00	2.07	10.76	1,220
		581	19	79.35	5.68	4.48	8.43	0.00	0.00	2.07	14.97	1,173
		670	22	80.45	7.46	5.52	3.43	0.00	0.00	3.13	12.09	1,592
		536	19	86.57	4.29	3.73	4.66	0.00	0.00	0.75	9.14	1,251
		3,001	20	82.77	5.60	4.30	5.26	0.00	0.00	2.07	11.63	6,811
28-May-22	1-Nov-22	87	22	82.76	5.75	6.90	1.15	0.00	0.00	3.45	11.49	158
		546	18	80.04	5.49	6.96	2.20	0.00	0.00	5.31	14.47	1,135
		871	28	73.25	7.23	4.25	11.02	0.00	0.69	3.56	19.52	1,623
		690	22	72.17	4.64	4.64	15.22	0.00	0.00	3.33	23.19	1,451
		740	25	72.03	7.70	5.27	13.92	0.00	0.00	1.08	20.27	1,496
		636	21	83.33	4.09	6.60	3.77	0.00	0.00	2.20	12.58	1,436
		31	31	90.32	3.23	6.45	0.00	0.00	0.00	0.00	6.45	72
		3,601	23	75.98	5.94	5.44	9.47	0.00	0.17	3.00	18.08	7,371
30-May-21	6-Nov-21	33	17	90.91	3.03	6.06	0.00	0.00	0.00	0.00	6.06	72
		574	19	83.97	5.75	6.79	0.52	0.00	0.00	2.96	10.28	1,164
		530	17	84.34	7.92	2.83	1.51	0.00	0.00	3.40	7.74	1,212
		602	19	81.40	6.31	2.99	6.98	0.00	0.66	1.66	12.29	1,211
		505	17	85.35	5.15	2.38	4.55	0.00	0.00	2.57	9.50	1,125
		483	16	89.23	4.76	1.86	2.90	0.00	0.00	1.24	6.00	1,016
		97	16	90.72	0.00	7.22	2.06	0.00	0.00	0.00	9.28	226
		2,824	18	84.95	5.77	3.61	3.26	0.00	0.14	2.27	9.28	6,026
31-May-20	25-Oct-20	2,818	19	84.81	6.67	2.16	3.44	0.00	0.14	2.77	8.52	5,891
14-May-19	26-Oct-19	3,262	20	85.25	4.72	4.29	3.80	0.06	0.09	1.78	10.02	6,743
25-May-18	29-Oct-18	3,488	22	83.08	6.16	5.85	3.50	0.06	0.00	1.35	10.75	7,304
27-May-17	5-Nov-17	3,803	23	83.12	6.42	3.76	4.65	0.11	0.00	1.95	10.47	7,817
18-May-16	1-Nov-16	3,811	23	84.33	4.93	3.46	3.18	0.39	0.05	3.65	10.73	7,893
17-May-15	4-Nov-15	4,489	26	83.25	5.21	4.52	4.43	0.07	0.00	2.52	11.54	8,412
22-May-14	5-Nov-14	3,704	22	83.96	5.32	3.27	3.83	0.73	0.11	2.78	10.72	6,836
24-May-13	8-Nov-13	3,837	23	64.37	6.96	15.98	7.27	3.65	0.52	1.25	28.67	6,400
24-May-12	28-Oct-12	3,252	21	20.11	6.95	54.77	8.27	6.15	0.00	3.75	72.94	7,165
20-May-11	2-Nov-11	9,100	55	16.62	3.49	46.32	7.85	24.20	0.03	1.49	79.89	13,674
14-May-10	31-Oct-10	3,397	20	25.26	6.45	57.93	3.83	3.50	0.09	2.94	68.30	7,300
22-May-09	2-Nov-09	3,177	19	23.92	5.35	59.87	2.99	3.43	0.03	4.41	70.73	6,614

Figure 3.7
Commercial Vehicles Weighed
at the Enterprise Weigh Scale

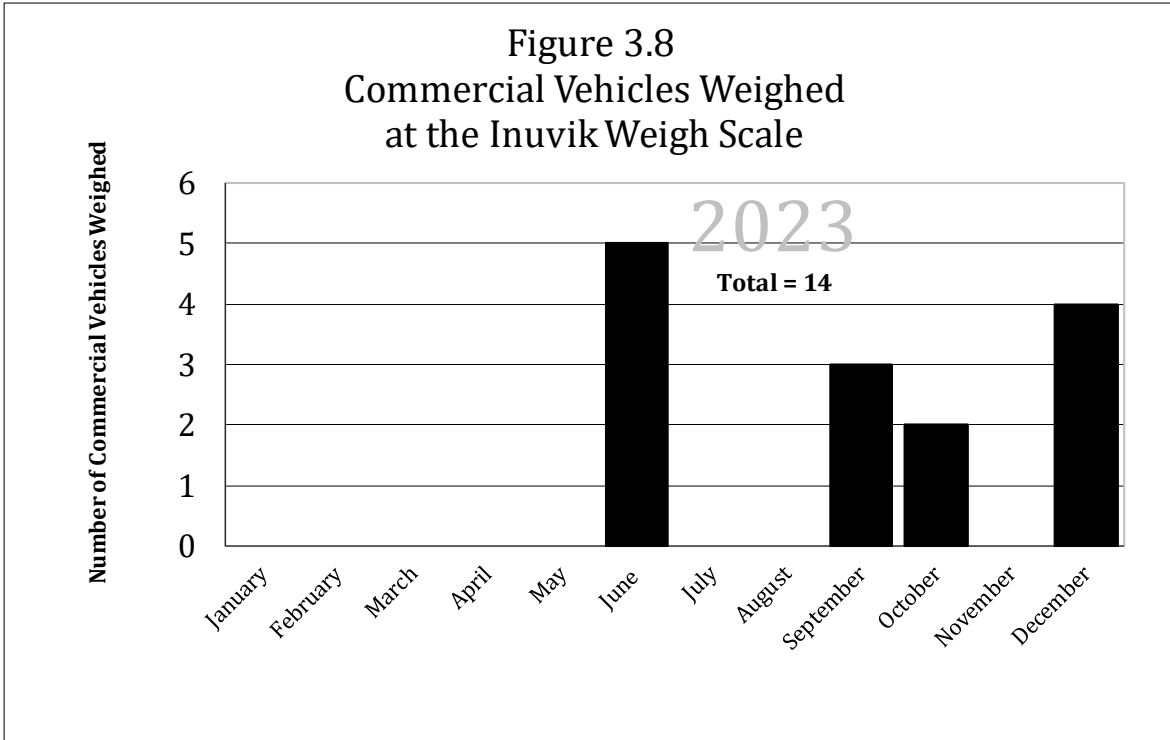


Total Vehicles Weighed

Year	January	February	March	April	May	June	July	August	September	October	November	December	Total
2023	489	644	660	260	262	502	621	166	0	310	284	81	4,279
2022	466	381	390	331	421	488	347	254	98	206	345	198	3,925
2021	227	590	241	109	358	274	303	200	251	273	186	147	3,159
2020	334	324	205	0	0	64	2	0	0	449	207	276	1,861
2019	161	221	146	77	51	58	88	143	40	144	154	85	1,368
2018	301	349	431	115	149	128	107	173	119	54	122	92	2,140
2017	163	144	201	91	166	125	90	41	89	82	227	177	1,596
2016	718	1,404	755	371	186	232	102	263	475	276	388	650	5,820
2015	844	602	842	304	257	217	310	360	464	536	620	400	5,756
2014	838	553	774	280	219	263	268	158	101	368	372	340	4,534
2013	452	430	581	496	392	418	716	683	422	558	693	608	6,449
2012	1,033	1,003	918	512	312	365	682	708	753	455	734	160	7,635
2011	1,284	832	1,520	622	416	615	752	615	692	629	461	529	8,967

Note: (1) A commercial vehicle is any vehicle with a GVW over 4500 kg.

Figure 3.8
Commercial Vehicles Weighed
at the Inuvik Weigh Scale



Total Vehicles Weighed

Year	January	February	March	April	May	June	July	August	September	October	November	December	Total
2023	0	0	0	0	0	5	0	0	3	2	0	4	14
2022	12	31	71	79	43	51	560	25	22	2	0	0	896
2021	9	97	139	142	58	20	121	104	22	59	20	0	791
2020	176	209	152	0	0	137	165	192	156	67	40	51	1,345
2019	158	188	169	179	48	214	219	306	231	79	44	66	1,901
2018	190	196	181	192	44	263	245	302	238	112	35	48	2,046
2017	169	190	193	168	59	216	181	178	196	96	52	52	1,750
2016	130	136	158	177	55	109	148	166	145	100	87	59	1,470
2015	211	181	231	231	132	122	223	222	191	207	119	84	2,154
2014	208	175	239	231	132	116	209	237	197	207	105	76	2,132
2013	179	184	191	170	68	170	201	231	196	125	70	63	1,848
2012	228	234	243	216	86	216	255	294	249	159	88	80	2,348
2011	277	284	295	263	105	262	310	357	302	193	107	97	2,852

Note: (1) A commercial vehicle is any vehicle with a GVW over 4500 kg.

**Figure 3.9
Overweight Permits Issued**

2023													
Location	January	February	March	April	May	June	July	August	September	October	November	December	Total
Enterprise Weigh Scale	0	0	0	0	0	0	0	0	0	0	0	0	0
Inuvik Weigh Scale	0	0	0	0	0	0	0	0	0	0	0	0	0
24/7 Permitting Centre	0	0	0	0	0	0	0	0	0	0	0	0	0
Inuvik Regional Office	0	0	0	0	0	0	0	0	0	0	0	0	0
Mobile Inspection Office	0	0	0	0	0	0	0	0	0	0	0	0	0
Hay River Regional Office	0	0	0	0	0	0	0	0	0	0	0	0	0
On-Line	91	113	99	37	31	77	99	34	40	72	27	10	730
Total	91	113	99	37	31	77	99	34	40	72	27	10	730
2022													
Location	January	February	March	April	May	June	July	August	September	October	November	December	Total
Enterprise Weigh Scale	0	0	0	0	0	0	0	0	1	0	0	0	1
Inuvik Weigh Scale	0	0	0	0	0	0	0	0	0	0	0	0	0
24/7 Permitting Centre	0	0	0	0	0	0	0	0	0	0	0	0	0
Inuvik Regional Office	0	0	0	0	0	0	0	0	0	0	0	0	0
Mobile Inspection Office	0	0	0	0	0	0	0	0	0	0	0	0	0
Hay River Regional Office	0	0	0	0	0	0	0	0	0	0	0	0	0
On-Line	40	58	115	54	72	33	67	88	61	48	51	26	713
Total	40	58	115	54	72	33	67	88	62	48	51	26	714
2021													
Location	January	February	March	April	May	June	July	August	September	October	November	December	Total
Enterprise Weigh Scale	0	0	0	0	0	0	0	0	0	0	0	0	0
Inuvik Weigh Scale	0	0	0	0	0	0	0	0	0	0	0	0	0
24/7 Permitting Centre	0	0	0	0	0	0	0	0	0	0	0	0	0
Inuvik Regional Office	0	0	0	0	0	0	0	0	0	0	0	0	0
Mobile Inspection Office	0	0	0	0	0	0	0	0	0	0	0	0	0
Hay River Regional Office	0	0	0	0	0	0	0	0	0	0	0	0	0
On-Line	30	68	108	48	27	41	50	28	25	43	49	27	544
Total	30	68	108	48	27	41	50	28	25	43	49	27	544
2020													
Location	January	February	March	April	May	June	July	August	September	October	November	December	Total
Enterprise Weigh Scale	0	0	0	0	0	0	0	0	0	0	0	0	0
Inuvik Weigh Scale	0	0	0	0	0	0	0	0	0	0	0	0	0
24/7 Permitting Centre	0	0	0	0	0	0	0	0	0	0	0	0	0
Inuvik Regional Office	0	0	0	0	0	0	0	0	0	0	0	0	0
Mobile Inspection Office	0	0	0	0	0	0	0	0	0	0	0	0	0
Hay River Regional Office	0	0	0	0	0	0	0	0	0	0	0	0	0
On-Line	2	4	22	28	26	34	37	40	44	46	42	41	366
Total	2	4	22	28	26	34	37	40	44	46	42	41	366
2019													
Location	January	February	March	April	May	June	July	August	September	October	November	December	Total
Enterprise Weigh Scale	0	0	0	0	0	0	0	0	0	0	0	0	0
Inuvik Weigh Scale	0	0	0	0	0	0	0	0	0	0	0	0	0
24/7 Permitting Centre	0	0	0	0	0	0	0	0	0	0	0	0	0
Inuvik Regional Office	0	0	0	0	0	0	0	0	0	0	0	0	0
Mobile Inspection Office	0	0	0	0	0	0	0	0	0	0	0	0	0
Hay River Regional Office	0	0	0	0	0	0	0	0	0	0	0	0	0
On-Line	33	53	112	24	47	51	43	75	70	34	24	12	578
Total	33	53	112	24	47	51	43	75	70	34	24	12	578
2018													
Location	January	February	March	April	May	June	July	August	September	October	November	December	Total
Enterprise Weigh Scale	0	0	0	0	0	0	0	0	0	0	0	0	0
Inuvik Weigh Scale	0	0	0	0	0	0	0	0	0	0	0	0	0
24/7 Permitting Centre	0	0	0	0	0	0	0	0	0	0	0	0	0
Inuvik Regional Office	0	0	0	0	0	0	0	0	0	0	0	0	0
Mobile Inspection Office	0	0	0	0	0	0	0	0	0	0	0	0	0
Hay River Regional Office	0	0	0	0	0	0	0	0	0	0	0	0	0
On-Line	60	114	185	0	51	76	47	52	71	56	34	37	783
Total	60	114	185	0	51	76	47	52	71	56	34	37	783

NOTE: Overweight and Overdimension permits are issued for a single trip. Prior to 2003, combination overweight and overdimension permits were counted as one overdimension permit only.

Figure 3.10
Over-dimension Permits Issued

2023													
Location	January	February	March	April	May	June	July	August	September	October	November	December	Total
Enterprise Weigh Scale	0	0	0	0	0	0	0	0	0	0	0	0	0
Inuvik Weigh Scale	0	0	0	0	0	0	0	0	0	0	0	0	0
24/7 Permitting Centre	0	0	0	0	0	0	0	0	0	0	0	0	0
Inuvik Regional Office	0	0	0	0	0	0	0	0	0	0	0	0	0
Mobile Inspection Office	0	0	0	0	0	0	0	0	0	0	0	0	0
Hay River Regional Office	0	0	0	0	0	0	0	0	0	0	0	0	0
On-Line	121	238	225	97	83	142	223	124	114	161	75	38	1,641
Total	121	238	225	97	83	142	223	124	114	161	75	38	1,641
2022													
Location	January	February	March	April	May	June	July	August	September	October	November	December	Total
Enterprise Weigh Scale	0	0	0	0	0	0	0	0	1	0	0	0	1
Inuvik Weigh Scale	0	0	0	0	0	0	0	0	0	0	0	0	0
24/7 Permitting Centre	0	0	0	0	0	0	0	0	0	0	0	0	0
Inuvik Regional Office	0	0	0	0	0	0	0	0	0	0	0	0	0
Mobile Inspection Office	0	0	0	0	0	0	0	0	0	0	0	0	0
Hay River Regional Office	0	0	0	1	0	0	0	0	0	0	0	0	1
On-Line	92	154	242	84	91	112	130	114	110	108	93	75	1,405
Total	92	154	242	85	91	112	130	114	111	108	93	75	1,407
2021													
Location	January	February	March	April	May	June	July	August	September	October	November	December	Total
Enterprise Weigh Scale	0	0	0	0	0	0	0	0	0	0	0	1	1
Inuvik Weigh Scale	0	0	0	0	0	0	0	0	0	0	0	0	0
24/7 Permitting Centre	0	0	0	0	0	0	0	0	0	0	0	0	0
Inuvik Regional Office	0	0	0	0	0	0	0	0	0	0	0	0	0
Mobile Inspection Office	0	0	0	0	0	0	0	0	0	0	0	0	0
Hay River Regional Office	0	0	0	2	0	0	1	0	0	0	0	0	3
On-Line	118	142	277	70	78	125	132	93	81	72	71	57	1,316
Total	118	142	277	72	78	125	133	93	81	72	71	58	1,320
2020													
Location	January	February	March	April	May	June	July	August	September	October	November	December	Total
Enterprise Weigh Scale	0	0	0	0	0	0	0	0	0	0	0	0	0
Inuvik Weigh Scale	0	0	0	0	0	0	0	0	0	0	0	0	0
24/7 Permitting Centre	0	0	0	0	0	0	0	0	0	0	0	0	0
Inuvik Regional Office	0	0	0	0	0	0	0	0	0	0	0	0	0
Mobile Inspection Office	0	0	0	0	0	0	0	0	0	0	0	0	0
Hay River Regional Office	0	0	0	0	0	0	0	1	0	0	0	0	1
On-Line	18	43	96	94	84	112	119	130	142	150	136	133	1,257
Total	18	43	96	94	84	112	119	131	142	150	136	133	1,258
2019													
Location	January	February	March	April	May	June	July	August	September	October	November	December	Total
Enterprise Weigh Scale	0	0	1	0	0	0	0	0	0	0	0	0	1
Inuvik Weigh Scale	0	0	0	0	0	0	0	0	0	0	0	0	0
24/7 Permitting Centre	0	0	0	0	0	0	0	0	0	0	0	0	0
Inuvik Regional Office	0	0	0	0	0	0	0	0	0	0	0	0	0
Mobile Inspection Office	0	0	0	0	0	0	0	0	0	0	0	0	0
Hay River Regional Office	1	0	0	0	0	0	0	0	0	0	0	0	1
On-Line	107	165	286	72	96	80	105	120	177	86	50	51	1,395
Total	108	165	287	72	96	80	105	120	177	86	50	51	1,397
2018													
Location	January	February	March	April	May	June	July	August	September	October	November	December	Total
Enterprise Weigh Scale	0	0	0	0	0	0	1	0	0	0	0	0	1
Inuvik Weigh Scale	0	0	0	0	0	0	0	0	0	0	0	0	0
24/7 Permitting Centre	0	0	0	0	0	0	0	0	0	0	0	0	0
Inuvik Regional Office	0	0	0	0	0	0	0	0	0	0	0	0	0
Mobile Inspection Office	0	0	0	0	0	0	0	0	0	0	0	0	0
Hay River Regional Office	0	0	0	0	0	1	0	0	0	0	0	0	1
On-Line	115	355	521	0	115	185	112	140	149	121	58	72	1,943
Total	115	355	521	0	115	186	113	140	149	121	58	72	1,945

NOTE: Overweight and Overdimension permits are issued for a single trip. Prior to 2003, combination overweight and overdimension permits were counted as one overdimension permit only.

Figure 3.11
Registration Permits Issued (non-NWT Carriers)

2023													
Location	January	February	March	April	May	June	July	August	September	October	November	December	Total
Enterprise Weigh Scale	0	0	0	0	0	0	0	0	0	0	0	0	0
Inuvik Weigh Scale	0	0	0	0	0	0	0	0	0	0	0	0	0
24/7 Permitting Centre	0	0	0	0	0	0	0	0	0	0	0	0	0
Inuvik Regional Office	0	0	0	0	0	0	0	0	0	0	0	0	0
Mobile Inspection Office	0	0	0	0	0	0	0	0	0	0	0	0	0
Hay River Regional Office	0	0	0	0	0	0	0	0	0	0	0	0	0
On-Line	531	792	487	333	323	475	570	390	542	549	407	326	5,725
Total	531	792	487	333	323	475	570	390	542	549	407	326	5,725
2022													
Location	January	February	March	April	May	June	July	August	September	October	November	December	Total
Enterprise Weigh Scale	0	1	0	0	0	1	1	0	0	0	0	0	3
Inuvik Weigh Scale	0	0	0	0	0	0	0	0	0	0	0	0	0
24/7 Permitting Centre	0	0	0	0	0	0	0	0	0	0	0	0	0
Inuvik Regional Office	0	0	0	0	0	0	0	0	0	0	0	0	0
Mobile Inspection Office	0	0	0	0	0	0	0	0	0	0	0	0	0
Hay River Regional Office	1	3	3	9	0	0	1	1	3	3	0	0	24
On-Line	487	527	472	329	336	365	483	464	486	375	303	344	4,971
Total	488	531	475	338	336	366	485	465	489	378	303	344	4,998
2021													
Location	January	February	March	April	May	June	July	August	September	October	November	December	Total
Enterprise Weigh Scale	0	0	0	0	0	1	0	0	0	0	1	1	3
Inuvik Weigh Scale	0	0	0	0	0	0	0	0	0	0	0	0	0
24/7 Permitting Centre	0	0	0	0	0	0	0	0	0	0	0	0	0
Inuvik Regional Office	0	0	0	0	0	0	0	0	0	0	0	0	0
Mobile Inspection Office	0	0	0	0	0	0	0	0	0	0	0	0	0
Hay River Regional Office	0	0	2	2	5	5	1	2	0	0	0	0	17
On-Line	470	752	575	147	264	417	394	423	366	353	252	256	4,669
Total	470	752	577	149	269	423	395	425	366	353	253	257	4,689
2020													
Location	January	February	March	April	May	June	July	August	September	October	November	December	Total
Enterprise Weigh Scale	0	4	0	1	3	0	2	0	0	1	0	0	11
Inuvik Weigh Scale	0	0	0	0	0	0	0	0	0	0	0	0	0
24/7 Permitting Centre	0	0	0	0	0	0	0	0	0	0	0	0	0
Inuvik Regional Office	0	0	0	0	0	0	0	0	0	0	0	0	0
Mobile Inspection Office	0	0	0	0	0	0	0	0	0	0	0	0	0
Hay River Regional Office	1	4	0	0	0	0	0	7	0	10	1	1	24
On-Line	612	576	458	187	209	300	311	332	327	307	280	250	4,149
Total	613	584	458	188	212	300	313	339	327	318	281	251	4,184
2019													
Location	January	February	March	April	May	June	July	August	September	October	November	December	Total
Enterprise Weigh Scale	2	0	2	0	2	0	1	0	0	1	1	0	9
Inuvik Weigh Scale	0	0	0	0	0	0	0	0	0	0	0	0	0
24/7 Permitting Centre	0	0	0	0	0	0	0	0	0	0	0	0	0
Inuvik Regional Office	0	0	0	0	0	0	0	0	0	0	0	0	0
Mobile Inspection Office	0	0	0	0	0	0	0	0	0	0	0	0	0
Hay River Regional Office	2	2	0	0	0	6	1	7	0	0	0	0	18
On-Line	686	627	457	327	327	304	445	208	445	382	320	290	4,818
Total	690	629	459	327	329	310	447	215	445	383	321	290	4,845
2018													
Location	January	February	March	April	May	June	July	August	September	October	November	December	Total
Enterprise Weigh Scale	0	0	13	0	0	0	0	0	1	0	0	0	14
Inuvik Weigh Scale	0	0	0	0	0	0	0	0	0	0	0	0	0
24/7 Permitting Centre	16	7	0	0	0	0	0	0	0	0	0	0	23
Inuvik Regional Office	0	0	0	0	0	0	0	0	0	0	0	0	0
Mobile Inspection Office	0	0	0	0	0	0	0	0	0	0	0	0	0
Hay River Regional Office	0	0	1	1	0	0	0	0	0	0	0	0	2
On-Line	671	1,162	875	605	399	464	455	466	511	445	350	236	6,639
Total	687	1,169	889	606	399	464	455	466	512	445	350	236	6,678

NOTE: Overweight and Overdimension permits are issued for a single trip. Prior to 2003, combination overweight and overdimension permits were counted as one overdimension permit only.

**Figure 3.12
Fuel Tax Permits Issued**

2023													
Location	January	February	March	April	May	June	July	August	September	October	November	December	Total
Enterprise Weigh Scale	0	0	0	0	0	0	2	0	0	0	0	0	2
Inuvik Weigh Scale	0	0	0	0	0	0	0	0	0	0	0	0	0
24/7 Permitting Centre	0	0	0	0	0	0	0	0	0	0	0	0	0
Inuvik Regional Office	0	0	0	0	0	0	0	0	0	0	0	0	0
Mobile Inspection Office	0	0	0	0	0	0	0	0	0	0	0	0	0
Hay River Regional Office	1	0	2	0	0	0	0	0	0	0	0	0	3
On-Line	852	1,152	1,110	573	597	772	893	482	606	977	726	536	9,276
Total	853	1,152	1,112	573	597	772	895	482	606	977	726	536	9,281
2022													
Location	January	February	March	April	May	June	July	August	September	October	November	December	Total
Enterprise Weigh Scale	0	0	0	0	0	0	0	1	0	0	0	0	1
Inuvik Weigh Scale	0	0	0	0	0	0	0	0	0	0	0	0	0
24/7 Permitting Centre	0	0	0	0	0	0	0	0	0	0	0	0	0
Inuvik Regional Office	0	0	0	0	0	0	0	0	0	0	0	0	0
Mobile Inspection Office	0	0	0	0	0	0	0	0	0	0	0	0	0
Hay River Regional Office	0	2	1	2	0	0	0	4	2	3	0	0	14
On-Line	650	1,001	1,323	582	520	575	698	867	919	737	587	668	9,127
Total	650	1,003	1,324	584	520	575	698	868	923	739	590	668	9,142
2021													
Location	January	February	March	April	May	June	July	August	September	October	November	December	Total
Enterprise Weigh Scale	0	0	0	0	2	0	0	0	0	0	1	1	4
Inuvik Weigh Scale	0	0	0	0	0	0	0	0	0	0	0	0	0
24/7 Permitting Centre	0	0	0	0	0	0	0	0	0	0	0	0	0
Inuvik Regional Office	0	0	0	0	0	0	0	0	0	0	0	0	0
Mobile Inspection Office	0	0	0	0	0	0	0	0	0	0	0	0	0
Hay River Regional Office	0	1	1	8	1	2	2	0	0	0	0	0	15
On-Line	746	1,181	1,137	521	385	614	600	663	646	651	421	441	8,006
Total	746	1,182	1,138	529	388	616	602	663	646	651	422	442	8,025
2020													
Location	January	February	March	April	May	June	July	August	September	October	November	December	Total
Enterprise Weigh Scale	0	4	0	1	1	0	1	0	0	1	0	0	8
Inuvik Weigh Scale	0	0	0	0	0	0	0	0	0	0	1	0	1
24/7 Permitting Centre	0	0	0	0	0	0	0	0	0	0	0	0	0
Inuvik Regional Office	0	0	0	0	0	0	0	0	0	0	0	0	0
Mobile Inspection Office	0	0	0	0	0	0	0	0	0	0	0	0	0
Hay River Regional Office	0	4	0	1	0	0	0	4	0	1	1	2	13
On-Line	810	1,067	1,032	321	290	410	453	477	536	543	456	477	6,872
Total	810	1,075	1,032	323	291	410	454	481	536	545	458	479	6,894
2019													
Location	January	February	March	April	May	June	July	August	September	October	November	December	Total
Enterprise Weigh Scale	0	0	1	0	2	0	0	0	0	0	1	0	4
Inuvik Weigh Scale	0	0	0	0	0	0	0	0	0	0	0	0	0
24/7 Permitting Centre	0	0	0	0	0	0	0	0	0	0	0	0	0
Inuvik Regional Office	0	0	0	0	0	0	0	0	0	0	0	0	0
Mobile Inspection Office	0	0	0	0	0	0	0	0	0	0	0	0	0
Hay River Regional Office	1	0	0	0	0	0	0	2	0	0	0	1	4
On-Line	774	1,236	1,026	503	383	564	661	739	651	571	466	455	8,029
Total	775	1,236	1,027	503	385	564	661	741	651	571	467	456	8,037
2018													
Location	January	February	March	April	May	June	July	August	September	October	November	December	Total
Enterprise Weigh Scale	0	0	0	0	0	0	1	0	0	0	0	1	2
Inuvik Weigh Scale	0	0	0	0	0	0	0	0	0	0	0	0	0
24/7 Permitting Centre	0	0	0	0	0	0	0	0	0	0	0	0	0
Inuvik Regional Office	0	0	0	0	0	0	0	0	0	0	0	0	0
Mobile Inspection Office	0	0	0	0	0	0	0	0	0	0	0	0	0
Hay River Regional Office	0	0	0	0	0	1	0	0	0	1	0	0	2
On-Line	872	1,307	1,661	0	530	756	754	853	892	862	589	505	9,581
Total	872	1,307	1,661	0	530	757	755	853	892	863	589	506	9,585

NOTE: Overweight and Overdimension permits are issued for a single trip. Prior to 2003, combination overweight and overdimension permits were counted as one overdimension permit only.

Figure 3.13 Vehicle Classification at the Enterprise Weigh Scale

Unit Type	2023												12 Month Total	% of Total
	Jan	Feb	Mar	Apr	May	Jun	Jul	Aug	Sep	Oct	Nov	Dec		
Pickup >4500 kg	21	10	11	9	14	39	29	5	0	12	16	5	171	4.00
Straight Truck	40	57	38	18	17	62	84	18	0	27	18	3	382	8.93
Tractor Semi Trailer	229	277	366	132	144	209	280	89	0	143	95	24	1,988	46.46
A Train	2	1	1	1	4	15	21	3	0	0	0	1	49	1.15
B Train	7	8	8	1	4	35	13	2	0	2	5	2	87	2.03
C Train	0	1	0	0	0	0	0	0	0	0	0	0	1	0.02
Extended Length Tra	177	273	227	94	74	140	192	49	0	124	147	44	1,541	36.01
Pole Truck	10	6	6	0	0	0	0	0	0	0	1	0	23	0.54
Special Configuration	3	8	3	3	5	2	2	0	0	2	2	2	32	0.75
Bus	0	3	0	2	0	0	0	0	0	0	0	0	5	0.12
Total	489	644	660	260	262	502	621	166	0	310	284	81	4,279	100.00
Unit Type	2022												12 Month Total	% of Total
	Jan	Feb	Mar	Apr	May	Jun	Jul	Aug	Sep	Oct	Nov	Dec		
Pickup >4500 kg	9	7	6	4	12	20	24	18	4	13	12	5	134	3.41
Straight Truck	44	32	26	50	72	54	65	19	9	19	35	18	443	11.29
Tractor Semi Trailer	163	131	207	148	230	304	153	110	51	86	131	74	1,788	45.55
A Train	15	5	2	19	17	8	12	12	1	7	6	1	105	2.68
B Train	5	14	5	55	30	29	7	6	1	3	15	0	170	4.33
C Train	0	0	0	0	0	0	0	0	0	0	0	0	0	0.00
Extended Length Tra	222	187	138	54	56	70	83	88	29	74	145	89	1,235	31.46
Pole Truck	6	4	2	0	0	0	0	0	1	1	0	9	23	0.59
Special Configuration	2	1	4	1	4	2	0	1	1	1	1	2	20	0.51
Bus	0	0	0	0	0	1	3	0	1	2	0	0	7	0.18
Total	466	381	390	331	421	488	347	254	98	206	345	198	3,925	100.00
Unit Type	2021												12 Month Total	% of Total
	Jan	Feb	Mar	Apr	May	Jun	Jul	Aug	Sep	Oct	Nov	Dec		
Pickup >4500 kg	12	15	1	6	5	11	7	4	12	11	3	6	93	2.94
Straight Truck	23	44	26	13	42	47	30	15	35	36	22	11	344	10.89
Tractor Semi Trailer	93	204	86	46	163	124	152	95	142	134	98	61	1,398	44.25
A Train	5	7	6	2	9	1	13	3	5	10	2	3	66	2.09
B Train	8	28	3	1	2	4	4	2	4	0	2	1	59	1.87
C Train	1	0	1	0	0	0	0	0	0	0	0	0	2	0.06
Extended Length Tra	80	279	112	39	134	87	95	81	52	82	59	64	1,164	36.85
Pole Truck	5	10	2	1	0	0	0	0	0	0	0	1	19	0.60
Special Configuration	0	3	4	1	3	0	2	0	1	0	0	0	14	0.44
Bus	0	0	0	0	0	0	0	0	0	0	0	0	0	0.00
Total	227	590	241	109	358	274	303	200	251	273	186	147	3,159	100.00
Unit Type	2020												12 Month Total	% of Total
	Jan	Feb	Mar	Apr	May	Jun	Jul	Aug	Sep	Oct	Nov	Dec		
Pickup >4500 kg	7	13	7	0	0	0	1	0	0	11	5	4	48	2.58
Straight Truck	19	16	12	0	0	12	0	0	0	60	30	39	188	10.10
Tractor Semi Trailer	117	117	78	0	0	52	1	0	0	191	78	127	761	40.89
A Train	11	9	12	0	0	0	0	0	0	6	2	8	48	2.58
B Train	7	12	2	0	0	0	0	0	0	7	6	6	40	2.15
C Train	0	0	0	0	0	0	0	0	0	0	0	0	0	0.00
Extended Length Tra	161	138	85	0	0	0	0	0	0	171	84	89	728	39.12
Pole Truck	12	9	1	0	0	0	0	0	0	0	1	3	26	1.40
Special Configuration	0	7	7	0	0	0	0	0	0	3	1	0	18	0.97
Bus	0	3	1	0	0	0	0	0	0	0	0	0	4	0.21
Total	334	324	205	0	0	64	2	0	0	449	207	276	1,861	100.00
Unit Type	2019												12 Month Total	% of Total
	Jan	Feb	Mar	Apr	May	Jun	Jul	Aug	Sep	Oct	Nov	Dec		
Single Axle	12	10	7	7	7	11	15	24	2	13	10	5	123	8.99
Tandem	5	1	1	1	0	2	3	3	3	1	0	1	21	1.54
4-Axle	0	0	0	0	0	0	0	0	0	0	0	0	0	0.00
5 Axle	89	104	81	53	31	40	48	86	22	91	98	41	784	57.31
6 Axle	0	0	0	0	0	0	0	0	0	0	0	0	0	0.00
A Train	0	0	0	0	0	1	0	0	2	0	0	0	3	0.22
B Train	6	16	8	0	0	0	0	1	0	3	5	1	40	2.92
C Train	0	0	0	0	0	0	0	0	0	0	0	0	0	0.00
Super B	49	90	49	16	13	4	22	29	11	36	41	37	397	29.02
Logging Truck	0	0	0	0	0	0	0	0	0	0	0	0	0	0.00
Total	161	221	146	77	51	58	88	143	40	144	154	85	1,368	100.00
Unit Type	2018												12 Month Total	% of Total
	Jan	Feb	Mar	Apr	May	Jun	Jul	Aug	Sep	Oct	Nov	Dec		
Single Axle	3	5	2	2	5	3	2	5	1	0	0	4	32	1.50
Tandem	6	19	13	9	9	8	10	10	11	4	8	4	111	5.19
4-Axle	0	0	0	0	0	0	0	0	0	0	0	0	0	0.00
5 Axle	154	183	214	84	107	99	67	124	81	21	54	48	1,236	57.76
6 Axle	0	0	0	0	0	0	0	0	0	0	0	0	0	0.00
A Train	0	0	0	0	1	0	0	0	0	0	0	0	1	0.05
B Train	3	2	3	0	1	1	0	3	0	1	0	1	15	0.70
C Train	1	3	5	0	0	0	0	0	0	0	0	0	9	0.42
Super B	134	137	194	20	26	17	28	31	26	28	60	35	736	34.39
Logging Truck	0	0	0	0	0	0	0	0	0	0	0	0	0	0.00
Total	301	349	431	115	149	128	107	173	119	54	122	92	2,140	100.00

Figure 3.14 Vehicle Classification at the Inuvik Weigh Scale

Unit Type	2023												12 Month	
	Jan	Feb	Mar	Apr	May	Jun	Jul	Aug	Sep	Oct	Nov	Dec	Total	% of Total
Pickup >4500 kg	0	0	0	0	0	0	0	0	0	0	0	0	0	0.00
Straight Truck	0	0	0	0	0	0	0	0	0	0	0	3	3	21.43
Tractor Semi Trailer	0	0	0	0	0	5	0	0	3	2	0	1	11	78.57
A Train	0	0	0	0	0	0	0	0	0	0	0	0	0	0.00
B Train	0	0	0	0	0	0	0	0	0	0	0	0	0	0.00
C Train	0	0	0	0	0	0	0	0	0	0	0	0	0	0.00
Extended Length Tra	0	0	0	0	0	0	0	0	0	0	0	0	0	0.00
Pole Truck	0	0	0	0	0	0	0	0	0	0	0	0	0	0.00
Special Configuration	0	0	0	0	0	0	0	0	0	0	0	0	0	0.00
Bus	0	0	0	0	0	0	0	0	0	0	0	0	0	0.00
Total	0	0	0	0	0	5	0	0	3	2	0	4	14	100.00

Unit Type	2022												12 Month	
	Jan	Feb	Mar	Apr	May	Jun	Jul	Aug	Sep	Oct	Nov	Dec	Total	% of Total
Pickup >4500 kg	0	0	0	0	0	0	0	0	0	0	0	0	0	0.00
Straight Truck	2	10	32	29	23	27	99	8	0	0	0	0	230	25.67
Tractor Semi Trailer	7	19	38	46	17	24	460	16	22	2	0	0	651	72.66
A Train	0	0	0	1	0	0	0	0	0	0	0	0	1	0.11
B Train	0	0	0	2	0	0	0	0	0	0	0	0	2	0.22
C Train	0	0	0	0	0	0	0	0	0	0	0	0	0	0.00
Extended Length Tra	3	2	1	1	1	0	1	1	0	0	0	0	10	1.12
Pole Truck	0	0	0	0	0	0	0	0	0	0	0	0	0	0.00
Special Configuration	0	0	0	0	2	0	0	0	0	0	0	0	2	0.22
Bus	0	0	0	0	0	0	0	0	0	0	0	0	0	0.00
Total	12	31	71	79	43	51	560	25	22	2	0	0	896	100.00

Unit Type	2021												12 Month	
	Jan	Feb	Mar	Apr	May	Jun	Jul	Aug	Sep	Oct	Nov	Dec	Total	% of Total
Pickup >4500 kg	0	0	0	0	0	0	0	0	0	0	0	0	0	0.00
Straight Truck	3	37	66	62	48	8	74	40	10	13	0	0	361	47.25
Tractor Semi Trailer	6	57	61	78	10	12	45	58	10	46	20	0	403	52.75
A Train	0	0	0	0	0	0	0	0	0	0	0	0	0	0.00
B Train	0	0	0	0	0	0	0	0	0	0	0	0	0	0.00
C Train	0	0	0	0	0	0	0	0	0	0	0	0	0	0.00
Extended Length Tra	0	3	12	2	0	0	2	6	2	0	0	0	0	0.00
Pole Truck	0	0	0	0	0	0	0	0	0	0	0	0	0	0.00
Special Configuration	0	0	0	0	0	0	0	0	0	0	0	0	0	0.00
Bus	0	0	0	0	0	0	0	0	0	0	0	0	0	0.00
Total	9	97	139	142	58	20	121	104	22	59	20	0	764	100.00

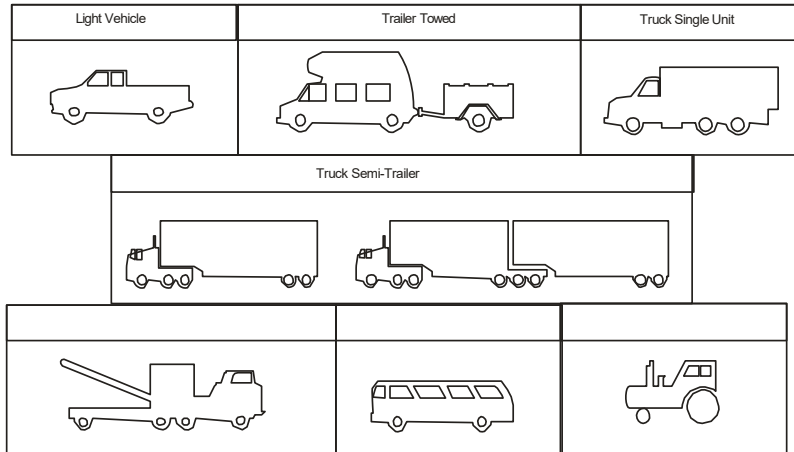
Unit Type	2020												12 Month	
	Jan	Feb	Mar	Apr	May	Jun	Jul	Aug	Sep	Oct	Nov	Dec	Total	% of Total
2-3 Axle	42	38	25	0	0	46	51	53	49	12	12	15	343	25.50
5 Axle	35	67	23	0	0	51	61	49	39	18	19	21	383	28.48
6 Axle	48	42	36	0	0	24	35	45	33	37	9	15	324	24.09
7 Axle	12	33	31	0	0	9	7	20	16	0	0	0	128	9.52
8 Axle	39	29	37	0	0	7	11	25	19	0	0	0	167	12.42
Other	0	0	0	0	0	0	0	0	0	0	0	0	0	0.00
Total	176	209	152	0	0	137	165	192	156	67	40	51	1,345	100.00

Unit Type	2019												12 Month	
	Jan	Feb	Mar	Apr	May	Jun	Jul	Aug	Sep	Oct	Nov	Dec	Total	% of Total
2-3 Axle	35	42	36	25	16	88	72	101	81	24	26	32	578	30.41
5 Axle	58	52	42	39	14	65	79	96	35	22	7	16	525	27.62
6 Axle	32	39	38	51	18	39	42	56	54	25	11	18	423	22.25
7 Axle	9	29	24	32	0	11	9	25	26	4	0	0	169	8.89
8 Axle	24	26	29	32	0	11	17	28	35	4	0	0	206	10.84
Other	0	0	0	0	0	0	0	0	0	0	0	0	0	0.00
Total	158	188	169	179	48	214	219	306	231	79	44	66	1,901	100.00

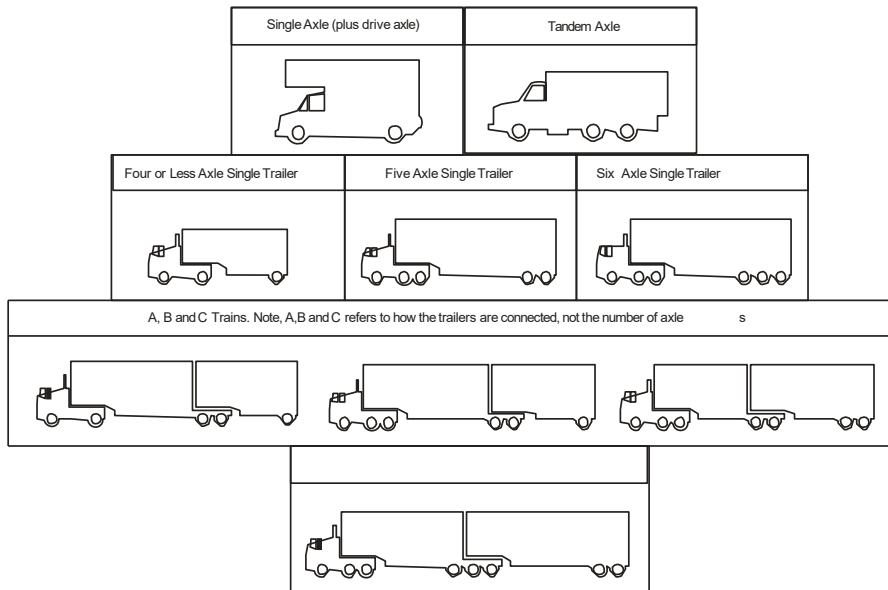
Unit Type	2018												12 Month	
	Jan	Feb	Mar	Apr	May	Jun	Jul	Aug	Sep	Oct	Nov	Dec	Total	% of Total
2-3 Axle	42	51	47	35	17	91	90	98	67	35	18	21	612	29.91
5 Axle	62	49	35	43	11	93	76	82	46	34	8	16	555	27.13
6 Axle	37	46	49	52	16	54	49	62	52	31	9	11	468	22.87
7 Axle	11	19	23	28	0	9	12	31	35	6	0	0	174	8.50
8 Axle	38	31	27	34	0	16	18	29	38	6	0	0	237	11.58
Other	0	0	0	0	0	0	0	0	0	0	0	0	0	0.00
Total	190	196	181	192	44	263	245	302	238	112	35	48	2,046	100.00

Figure 3.15 Vehicle Classifications

Highway Ferries



Weigh Scale Classification



Note: For more information regarding commercial vehicle definitions and allowable weights, please see the *Large Vehicle Control Regulations* under the *Motor Vehicles Act* available at www.justice.gov.nt.ca.

Appendix A: Historical Data

The Department has been actively collecting data since 1989. This Traffic Report shows the current state of the system only, however, the following historical data is available:

- **Short-term Visual Counts** – Vehicles are classified and counted manually at various highway junctions throughout the territory. The data is used to enhance vehicle classification and AADT calculations.
- **Short-term Intersection Volume Counts** – Vehicles are counted by direction and turning movement, which gives an indication of overall traffic flow at selected intersections on the highway system.
- **Historical AADT** – Average daily traffic, broken down by month and year, is also available from 1989 through to 1992. AADT for the past 10 years is located in Table 3.

The Department will provide the above data upon request. Please refer to the acknowledgements section in the front of this report for contact information.

Appendix B: Data Processing Methodology

Data Processing Methodology

The primary goal in traffic data collection is to determine Average Annual Daily Traffic (AADT). The most concise way of doing this is to collect traffic data at a site for a year, sum the traffic counts over the year and then divide by 365 days. However, for a number of reasons including routine maintenance, breakdowns and faulty batteries and data modules, no counter runs at 100% operational capacity for an entire year. Therefore, adjustments must be made for gaps in the data.

Three steps are involved in the processing of traffic data. Step one is to fill in as much missing data as possible for the year in question. Step two involves applying an AADT formula to the data and step three consists of independently verifying the calculated AADT through other sources and previous experience. The following steps outline this process in more detail:

Step One

- If less than one week of data is missing, an average of the hourly count in the week prior and the week following is calculated and applied to the missing data.
- If over one week of data is missing but less than a month, the first step is to obtain the data from the previous year. If the data cannot be found, an average of the first prior week and the first following week is calculated and applied to the missing data.

- If over one month of data is missing, data from previous years is applied through a growth rate algorithm. The results are analyzed for accuracy and completeness through comparisons with other traffic counter sites, data from other sources and previous experience.
- Growth rate is determined at each site by comparing available monthly average daily traffic from year to year and averaging over the last four years.

Step Two

- AADT is determined using an industry standard American Association of State Highway and Transportation Officials (AASHTO) formula (see below). After step one is applied, there is a strong possibility that there will still be incomplete data for the year. The AASHTO formula directly accounts for missing data by computing an average of averages.

$$AADT = \frac{1}{7} \sum_{i=1}^7 \left[\frac{1}{12} \sum_{j=1}^{12} \left(\frac{1}{n} \sum_{k=1}^n VOL_{ijk} \right) \right]$$

Where:

VOL = daily traffic on kth day of the year;

N = number of days in a year (365 or 366);

VOL_{ijk} = daily volume for i^{th} occurrence of the j^{th} day of week within the k^{th} month;

i = occurrence of day j in month m for which traffic data are available; and

j = day of week (1 to 7).

k = month (1 to 12).

Step Three

- Calculated AADT numbers are compared against previous years' values, other sources of traffic information such as ferry logs and Tibbitt to Contwoyto Winter Road Joint Venture season summary statistics, upstream and downstream counter sites, and previous experience.
- If results of the AADT algorithms appear to be abnormally high or low at a particular site, the AADT for the year will be estimated by applying an appropriate growth rate to the previous year's AADT.

Note: For counters located on access roads and winter roads, no extra information is introduced. Only the data collected in the current year is presented.

For more detailed information, please contact the Policy, Planning and Communications Division of the Department of Infrastructure.

If you would like this information in another official language, call us.

English

Si vous voulez ces informations dans une autre langue officielle, contactez-nous.

French

Kīspin ki nitawihitīn ē nīhīyawihk ōma ācimōwin, tipwāsinān.

Cree

Tłjchq yatı k'èè. Dı wegodi newq dè, gots'o gonede.

Tłjchq

ʔerihł'is Dēne Sų́íné yatı t'a huts'elkēr xa beyáyatı theʔą ʔat'e, nuwe ts'ēn yółtı.

Chipewyan

Edı gondı dehgáh got'je zhatıé k'éé edatł'éh enahddhę nıde naxets'é edahłı.

South Slavey

K'áhshó got'jne xədə k'é hederı ʔedłhtł'é yerınıwę nıde dúle.

North Slavey

Jii gwandak izhii ginjik vat'atr'ijahch'uu zhit yinothan jı', diits'at ginohkhiı.

Gwich'in

Uvanittuaq ilitchurisukupku Inuvialuktun, ququaqłuta.

Inuvialuktun

Ċ'đĀ ħħ'ḅΔĊ ĀřĹĴΔĤĊ Δḅ'ĤĊĊ'ḅĴĴ'Ĥḅ, ĐĊĊ'Ĥḅḅ Đ'ḅĊĊ'ḅḅĤĊĊ.

Inuktitut

Hapkaa titiqqat pijumagupkit Inuinnaqtun, uvaptinnut hivajarlutit.

Inuinnaqtun

Indigenous Languages:

867 767-9082 Ext.31041

French:

867-767-9348

866-561-1664 Toll Free