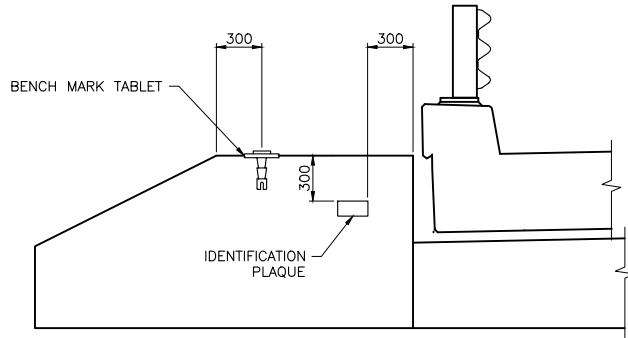
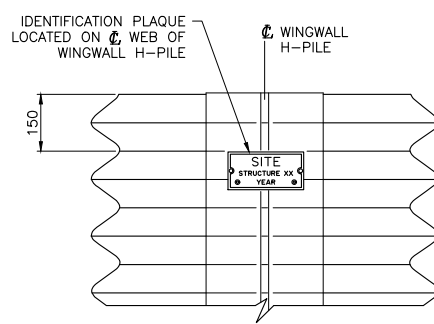


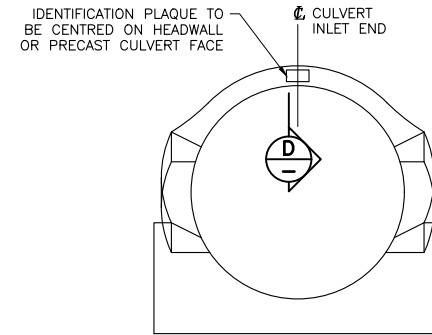
CONCRETE WINGWALL
1:50



ALTERNATE CONCRETE WINGWALL
1:25

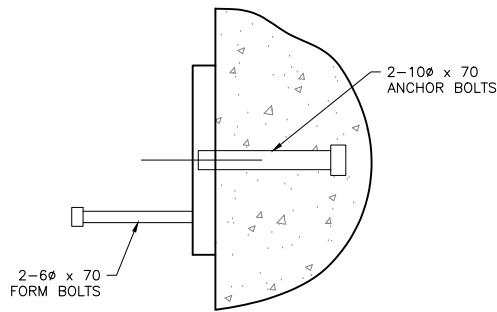


TIMBER OR CMP BACKWALL
(CMP BACKWALL SHOWN, TIMBER SIMILAR) 1:10

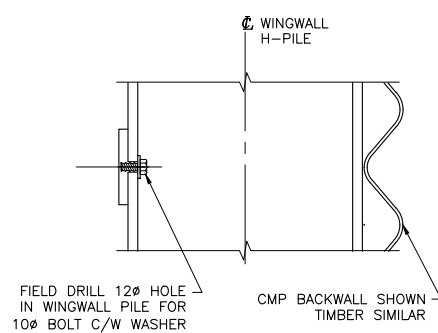


CAST-IN-PLACE CONCRETE
HEADWALLS AND PRECAST
CULVERTS
(CIP SHOWN, PRECAST SIMILAR) NTS

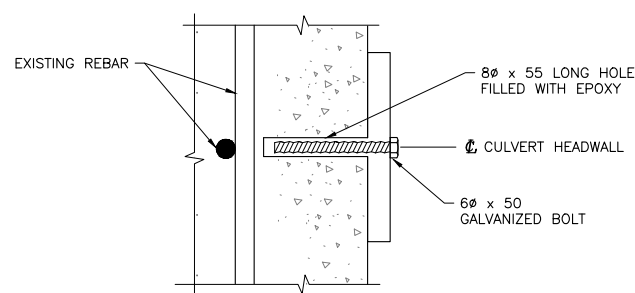
IDENTIFICATION PLAQUE AND BENCH MARK TABLET LOCATIONS FOR BRIDGES AND CULVERTS



CAST-IN-PLACE CONCRETE
1:2

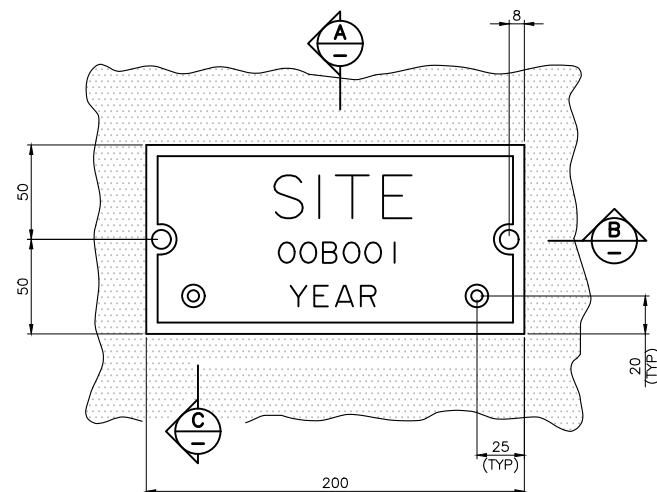


WINGWALL PILE
1:5



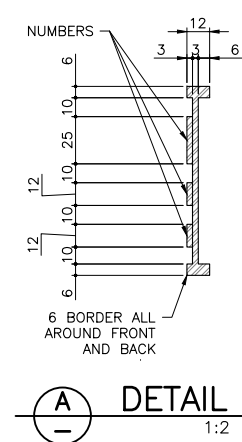
CAST-IN-PLACE CONCRETE HEADWALLS
AND PRECAST CONCRETE CULVERTS
(CIP SHOWN, PRECAST SIMILAR) 1:2

INSTALLATION DETAILS

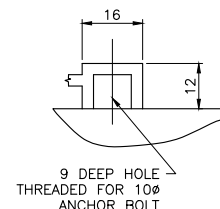


BRIDGE/CULVERT IDENTIFICATION PLAQUE
1:2

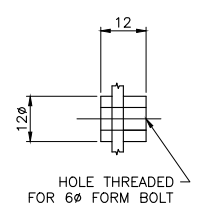
NOTE:
CULVERT PLAQUES ARE ONLY REQUIRED FOR CULVERTS WITH CAST IN PLACE
CONCRETE HEADWALLS OR PRECAST CONCRETE CULVERTS



DETAIL A
1:2



DETAIL B
1:1



DETAIL C
1:1

GENERAL NOTES


- ALL DIMENSIONS ARE IN MILLIMETERS UNLESS OTHERWISE NOTED.
- FABRICATION AND INSTALLATION OF ALL IDENTIFICATION PLAQUES AND BENCH MARK TABLETS SHALL BE IN ACCORDANCE WITH THE STANDARD SPECIFICATIONS FOR BRIDGE CONSTRUCTION SECTION 13.
- MATERIALS FOR ALL PLAQUES SHALL BE CAST ALUMINUM.
- ALL PLAQUES SHALL BE FABRICATED TO THE DIMENSIONS SHOWN. ANY PROPOSED CHANGES SHALL BE APPROVED BY THE DEPARTMENT.
- CMP SIGNIFIES "CORRUGATED METAL PIPE."

PLAQUES

- IDENTIFICATION PLAQUES SHALL BE LOCATED ON THE RIGHT HAND SIDE OF THE FIRST ABUTMENT ENCOUNTERED IN THE DIRECTION OF TRAVEL.
- FOR CIP HEADWALLS AND PRECAST CONCRETE CULVERTS, THE PLAQUE SHALL BE LOCATED AT INLET END.
- ALL LETTERS AND NUMBERS CAST ON THE PLAQUE SHALL BE UPPERCASE UNIVERSE 65.
- THE "YEAR" SHALL BE THE YEAR IN WHICH CONSTRUCTION IS COMPLETED.
- ASSET ID NUMBERS SHALL BE OBTAINED FROM THE BRIDGE ENGINEERING SECTION OF GNWT-INF.
- ALL PLAQUES SHALL BE SUPPLIED WITH BLACK BAKED ENAMEL EVERYWHERE EXCEPT FOR FULL BORDERS AND ALL NUMBERS AND LETTERS WHICH SHALL BE EXPOSED ALUMINUM.
- HEX HEAD CAP SCREWS SHALL CONFORM TO ASTM A307. NUTS AND WASHERS SHALL CONFORM TO ASTM A563 AND F436 RESPECTIVELY.
- BOLTS, NUTS, AND WASHERS SHALL BE GALVANIZED IN ACCORDANCE WITH ASTM F2329.

BENCH MARK TABLETS

- BRONZE BENCH MARK TABLETS SHALL BE INSTALLED ON ALL BRIDGE STRUCTURES. THE SUPPLY, FABRICATION, AND INSTALLATION OF BENCH MARK TABLETS SHALL BE IN ACCORDANCE WITH THE STANDARD SPECIFICATIONS FOR BRIDGE CONSTRUCTION SECTION 13.
- BENCH MARK TABLETS SHALL BE INSTALLED ON ABUTMENTS THAT ARE SUPPORTED ON PILES OR BEDROCK.
- BENCH MARK TABLETS SHALL GENERALLY BE PLACED ON THE NORTH WEST CORNER OF THE ABUTMENT AND THE LOCATION OF THE BENCH MARK TABLETS SHALL BE CLEARLY MARKED ON THE SITE SPECIFIC DRAWINGS.
- THE DEPARTMENT WILL ASSIGN A UNIQUE REFERENCE NUMBER FOR EACH BENCH MARK TABLET.
- FINAL BENCH MARK ELEVATION (TO THE NEAREST 0.001 m) WILL BE DETERMINED BY THE DEPARTMENT REPRESENTATIVE AFTER THE INSTALLATION OF THE BENCH MARK TABLET. THE FINAL BENCH MARK ELEVATION, AS WELL AS WHICH GEODETIC BASED BENCH MARK IT WAS TIED TO, WILL BE REPORTED TO THE DEPARTMENT.
- TWIN STRUCTURES WILL ONLY REQUIRE ONE BENCH MARK TABLET ON ONE OF THE STRUCTURES.

		Consultant Logo	
Rev	Date	Description	Init
REVISIONS			
Government of Northwest Territories			
STANDARD DRAWING STANDARD ASSET ID PLAQUE AND BENCH MARK TABLET			
DESIGNED	K. HABEL	DATE	OCTOBER 25, 2024
CHECKED	K. WILLIS	DATE	OCTOBER 25, 2024
DRAWN	T. CHIU	DATE	OCTOBER 25, 2024
SCALE	AS SHOWN		
PROJECT No.		PREPARED UNDER THE DIRECTION OF K. HABEL ENGINEER OF RECORD DATE OCTOBER 25, 2024	
DRAWING No.		S-001	

CANCEL PRINTS BEARING PREVIOUS LETTER