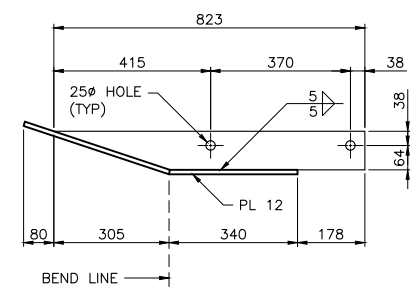
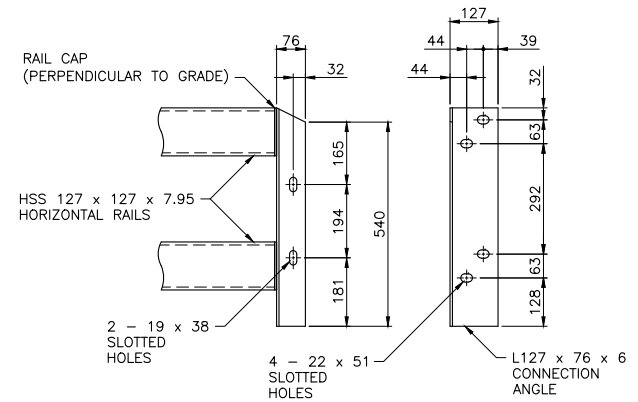


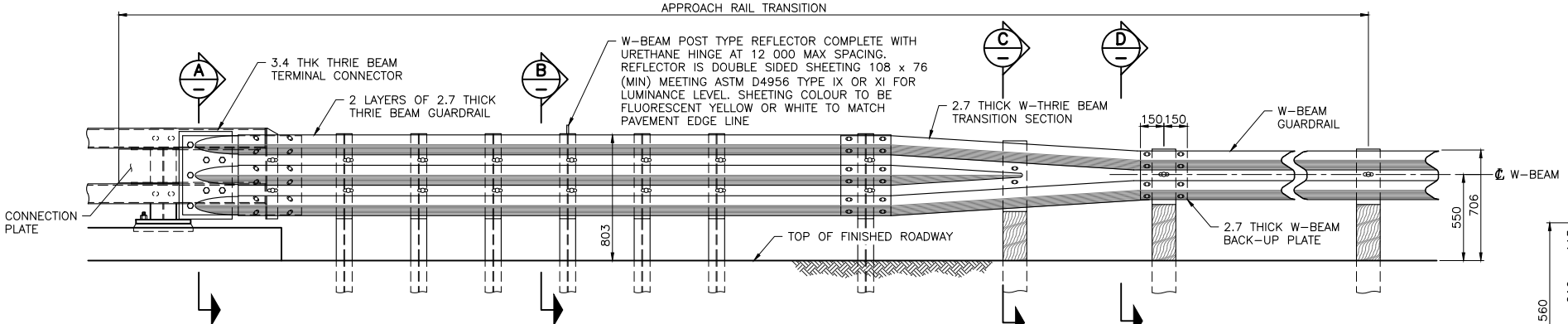
**APPROACH RAIL TRANSITION PLAN**  
1:20



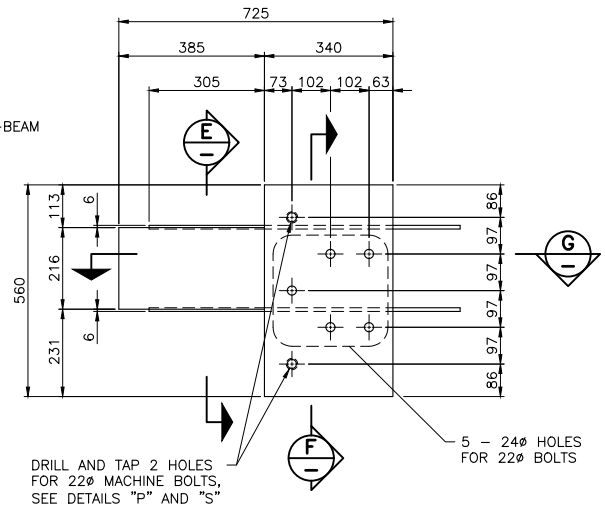
**SECTION G**  
1:10



**CONNECTION ANGLE DETAIL**  
1:10



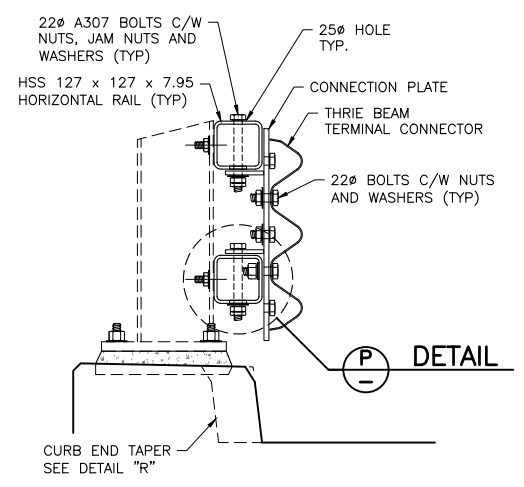
**APPROACH RAIL TRANSITION ELEVATION**  
1:20



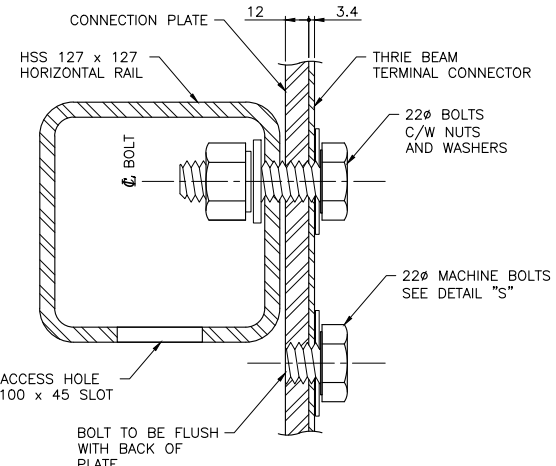
**CONNECTION PLATE DETAIL**  
1:10

**SECTION E**  
1:10

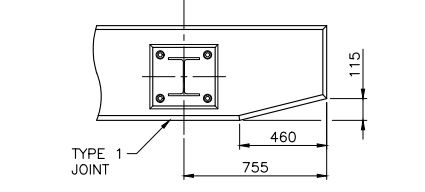
**SECTION F**  
1:10



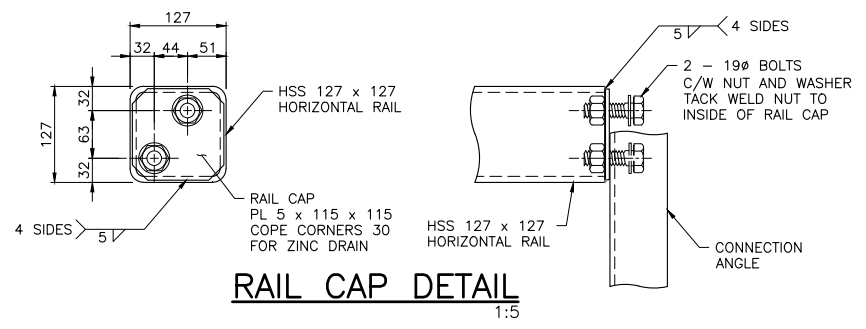
**DETAIL P**



**DETAIL R**  
1:10



**DETAIL S**  
1:2

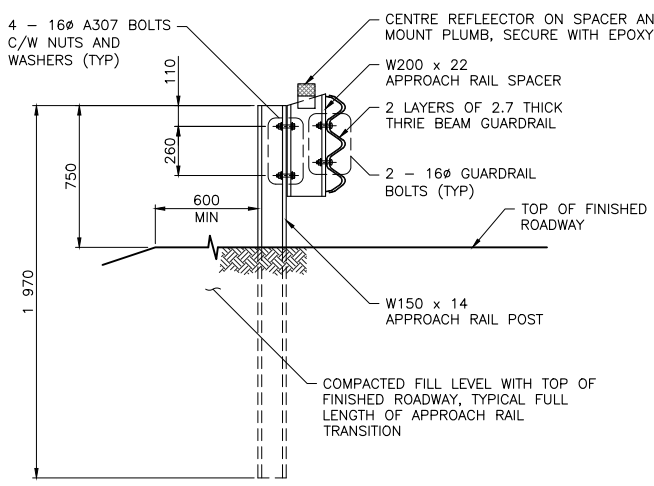


**RAIL CAP DETAIL**  
1:5

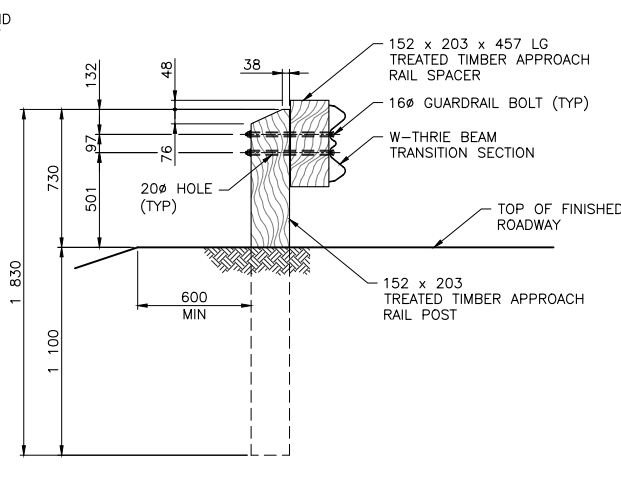
**SECTION A**  
1:10

**DETAIL P**  
1:2

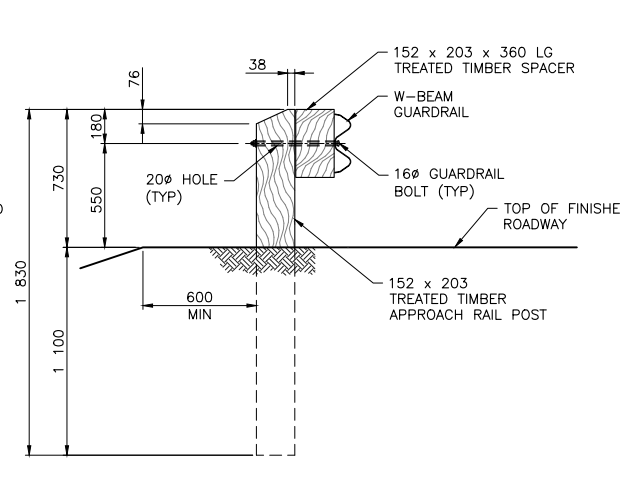
**DETAIL S**  
1:2



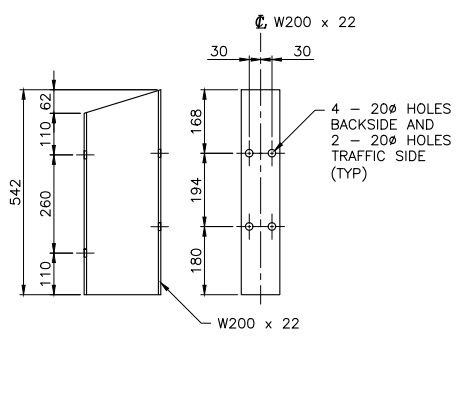
**SECTION B**  
1:20



**SECTION C**  
1:20



**SECTION D**  
1:20



**SPACER DETAIL**  
1:10

\* WORK THESE DRAWINGS TOGETHER: S-004 AND S-005

Government of Northwest Territories  
Consultant Logo

Rev	Date	Description	Init

REVISIONS

Government of Northwest Territories

STANDARD DRAWING  
TL-4 DOUBLE TUBE TYPE BRIDGERAIL  
APPROACH RAIL TRANSITION DETAILS

DESIGNED	K. HABEL	DATE	OCTOBER 25, 2024
CHECKED	K. WILLIS	DATE	OCTOBER 25, 2024
DRAWN	T. CHIU	DATE	OCTOBER 25, 2024
SCALE	AS SHOWN		

PROJECT No.		PREPARED UNDER THE DIRECTION OF	
		K. HABEL	
		ENGINEER OF RECORD	
		DATE	OCTOBER 25, 2024
		DRAWING No.	S-005

FILE: \\MECA\DATA\WORKING\W\N\2021-2234-00\STRU\MODEL\S-005.DWG  
PLOTTED: October 25, 2024

CANCEL PRINTS BEARING PREVIOUS LETTER