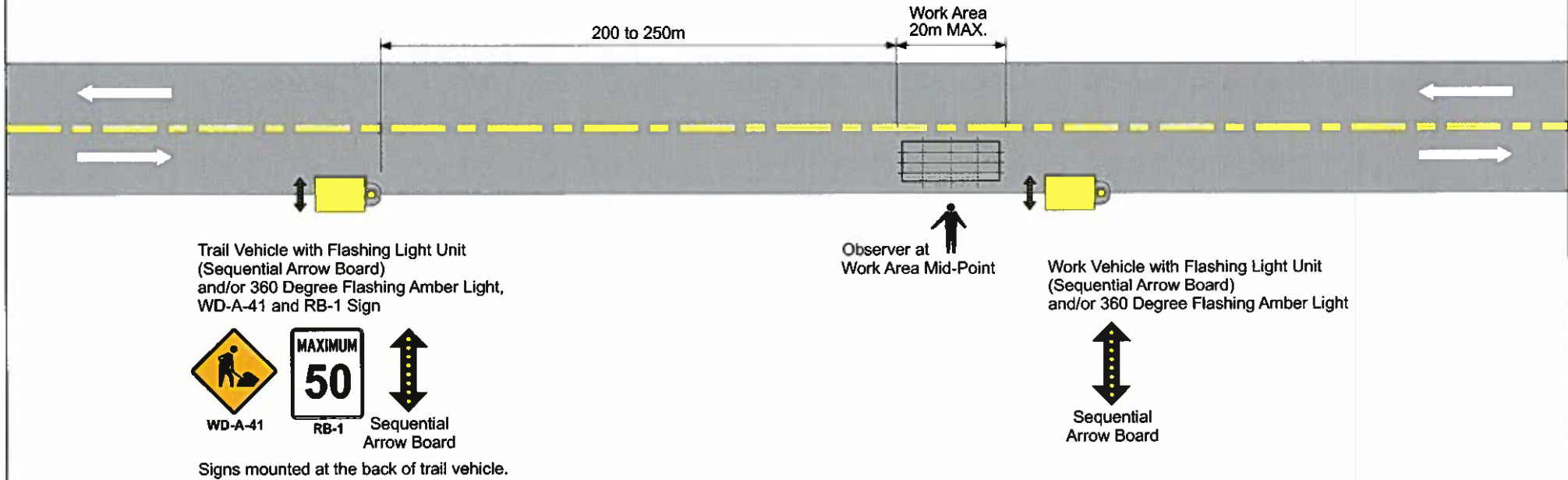


- This Figure accompanies the written procedure found in the Isolated Pothole Patching code of practice.
- Position Work and Trail Vehicle off travel lane to greatest extent practical.
- Position vehicles so that Flashing Light Units (Sequential Arrow Board) are aimed to provide the best visibility for approaching traffic.



Posted Speed (km/h)	Initial Landmark (m)
100	361
90	325
80	289
70	253
60	217
50	181