



WD-A45

THIS SIGN (WD-A45) SHALL BE USED ON ALL CONSTRUCTION AND MAINTENANCE WORKS WHERE FLAGMEN ARE EMPLOYED.

**PROJECT SIGN**

SUPPLIED BY ENGINEER

NEXT \_\_\_\_ km.  
**UNDER CONSTRUCTION**  
**OBEY ALL**  
**SIGNS AND SIGNALS**  
DEPARTMENT OF TRANSPORTATION

**NOTE:**

1. SPEED LIMIT SIGNS SHALL BE POSTED EVERY 1000 METRES THROUGHOUT THE WORK AREA WHERE THERE IS A RESTRICTED SPEED ZONE.

GAZETTED HIGHWAY SPEED



RB-1



SUPPLIED BY ENGINEER



RB-1A



WD-150



WD-A22



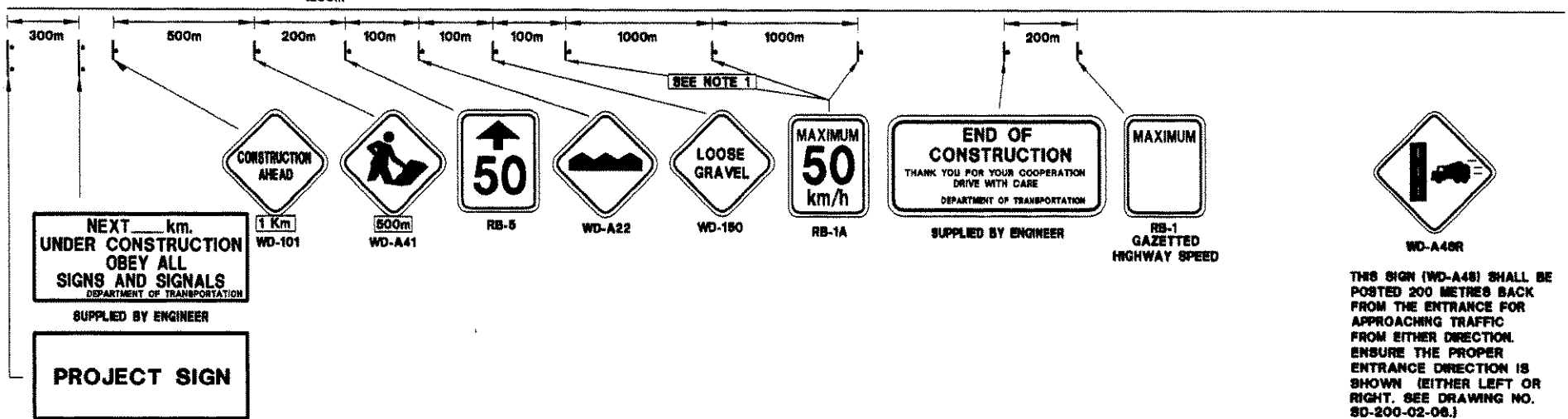
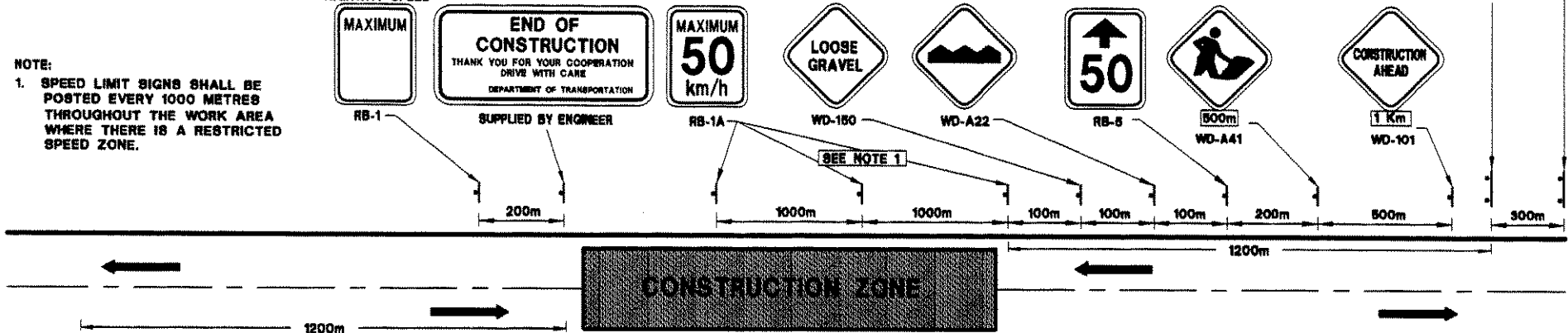
RB-5



WD-A41



WD-101



THIS SIGN (WD-A48) SHALL BE POSTED 200 METRES BACK FROM THE ENTRANCE FOR APPROACHING TRAFFIC FROM EITHER DIRECTION. ENSURE THE PROPER ENTRANCE DIRECTION IS SHOWN (EITHER LEFT OR RIGHT. SEE DRAWING NO. SD-200-02-08.)



SD-200-02-01  
**TYPICAL SIGNING WHERE TRAFFIC IS MAINTAINED**  
 Date: DEC 1995 Revised: APRIL 2005

Approved  
*K. H. [Signature]*  
 Director  
 Highways Division  
 APR 21 2005  
 Date