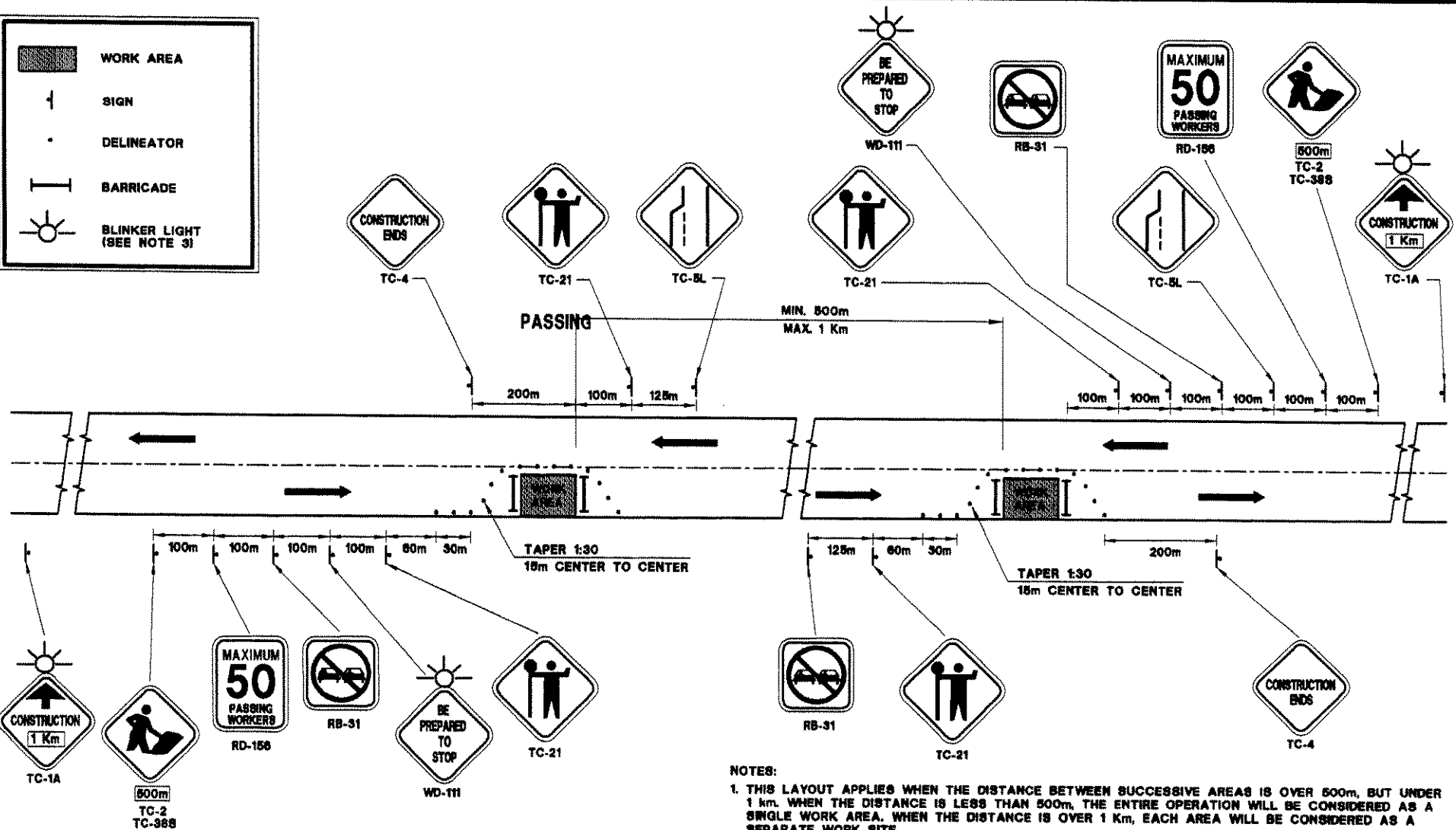


	WORK AREA
	SIGN
	DELINEATOR
	BARRICADE
	BLINKER LIGHT (SEE NOTE 3)



- NOTES:
1. THIS LAYOUT APPLIES WHEN THE DISTANCE BETWEEN SUCCESSIVE AREAS IS OVER 500m, BUT UNDER 1 km. WHEN THE DISTANCE IS LESS THAN 500m, THE ENTIRE OPERATION WILL BE CONSIDERED AS A SINGLE WORK AREA. WHEN THE DISTANCE IS OVER 1 Km, EACH AREA WILL BE CONSIDERED AS A SEPARATE WORK SITE.
 2. USE OF 700mm TRAFFIC CONES DURING DAYLIGHT OPERATIONS FOR DELINEATION DEVICES FOR TEMPORARY WORK AREAS IS ACCEPTABLE. IF OPERATIONS WILL EXTEND INTO HOURS OF DARKNESS, CONSTRUCTION DELINEATORS SHALL BE USED.
 3. UTILIZE BLINKER LIGHTS DURING HOURS OF DARKNESS.



SD-200-02-04

TYPICAL SIGNING FOR SUCCESSIVE WORK AREAS

Date: DEC. 1995 Revised: MARCH 2003

Approved
K. Chiu
Director
Highways Division

APR 21 2005
Date