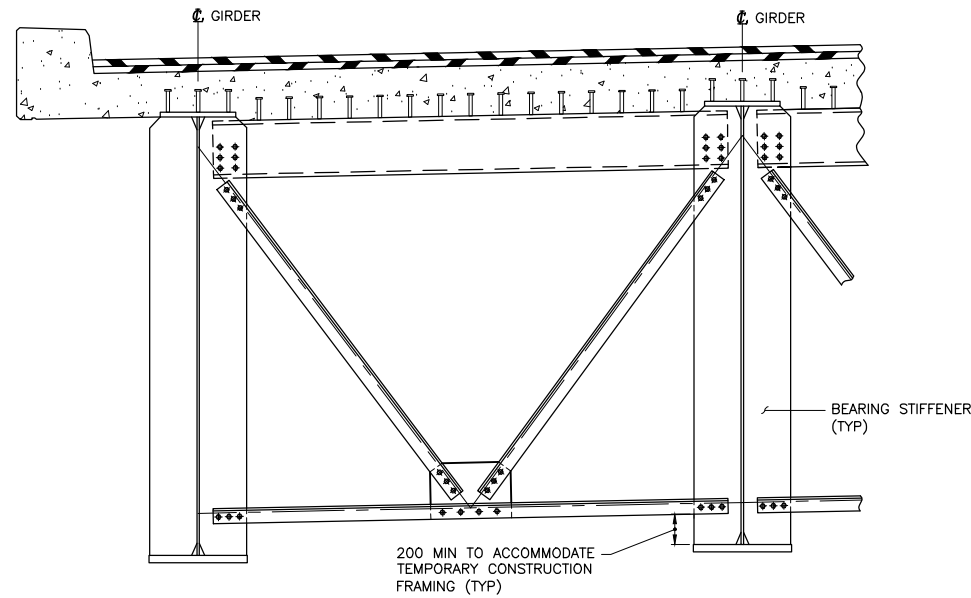
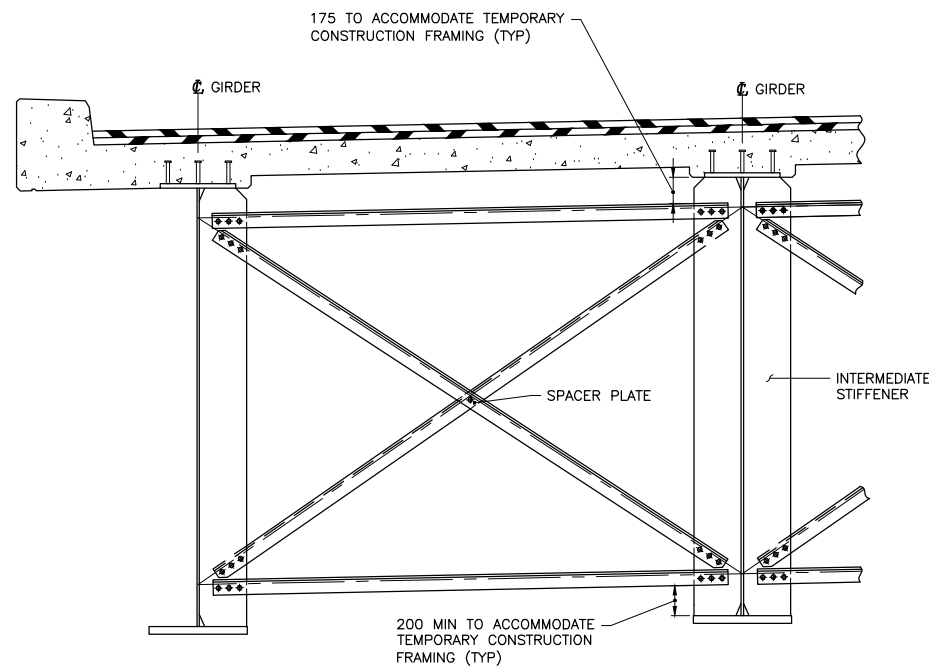


GENERAL NOTES:

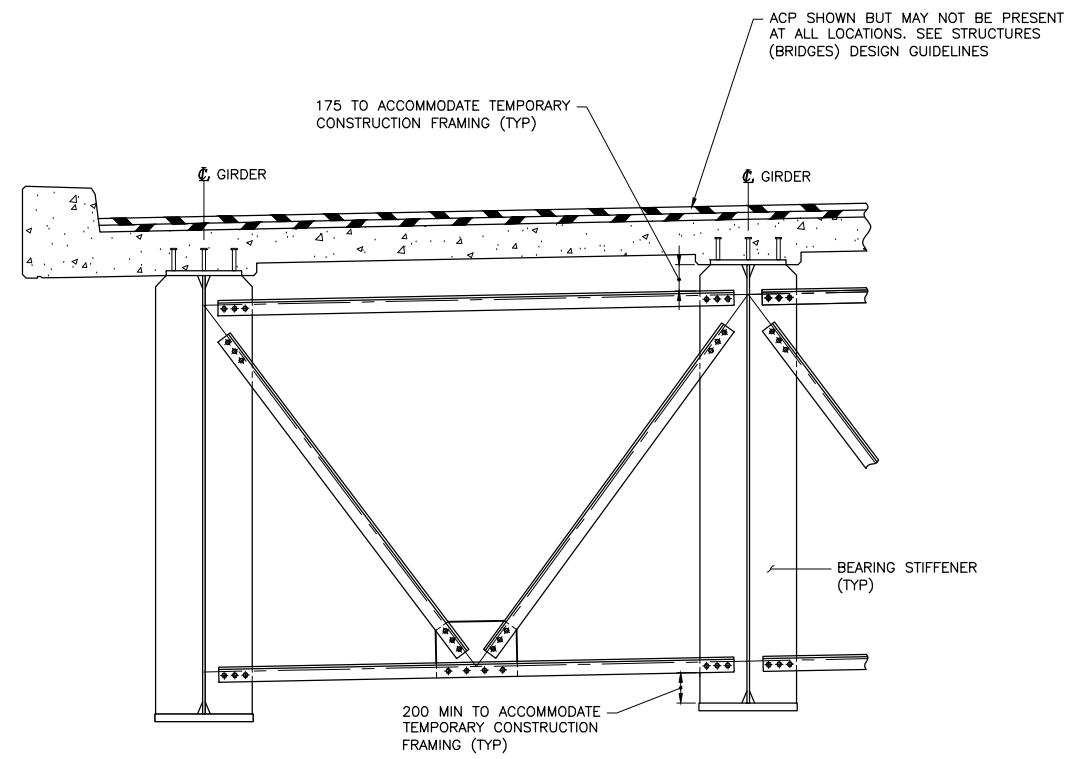
- ALL DIMENSIONS ARE IN MILLIMETRES UNLESS NOTED OTHERWISE.
- AT DECK JOINT LOCATIONS, GIRDERS SHALL RECEIVE THE FOLLOWING COATING SYSTEM IN ACCORDANCE WITH THE STANDARD SPECIFICATIONS FOR BRIDGE CONSTRUCTION SECTION 6.
 - A COMPLETE SF2, SF3 OR SF4 APPROVED BRIDGE COATING SYSTEM SHALL BE APPLIED TO THE BOTTOM FLANGE SURFACES (UNDERSIDE, TOP AND EDGES)
 - THE FAYING SURFACE OF UNDERSIDE OF GIRDER BOTTOM FLANGE IN APPROVED ORGANIC ZINC EPOXY PRIMER.
- AT LOCATIONS WHERE THERE IS NO DECK JOINT, AN APPROVED ORGANIC ZINC EPOXY PRIMER SHALL BE APPLIED TO THE UNDERSIDE OF GIRDER BOTTOM FLANGES IN CONTACT WITH THE BEARING.



**K-BRACING DETAILS
AT ABUTMENT DIAPHRAGM**
1:25



CROSS-BRACING DETAILS



K-BRACING DETAILS

AT INTERMEDIATE AND PIER DIAPHRAGMS
1:25

* WORK THESE DRAWINGS TOGETHER: T-003 AND T-004

		Consultant Logo	
--	--	-----------------	--

Rev	Date	Description	Init

REVISIONS

Government of Northwest Territories

TYPICAL DETAIL DRAWING
STEEL PLATE GIRDER BRIDGES
SHEET 1

DESIGNED	K. HABEL	DATE	OCTOBER 25, 2024
CHECKED	K. WILLIS	DATE	OCTOBER 25, 2024
DRAWN	T. CHIU	DATE	OCTOBER 25, 2024
SCALE	AS SHOWN		

PROJECT No.	PREPARED UNDER THE DIRECTION OF K. HABEL ENGINEER OF RECORD DATE OCTOBER 25, 2024
DRAWING No.	T-003

DETAILS SHOWN ARE CONCEPTUAL AND REPRESENT DEPARTMENT PRACTICES AS REFERENCED IN THE STRUCTURES (BRIDGES) DESIGN GUIDELINES CONSULTANT IS FULLY RESPONSIBLE FOR DESIGNING THE DETAILS AND SHALL INCORPORATE THE DETAILS ON THE SITE SPECIFIC DRAWINGS AS APPROPRIATE

NOT FOR CONSTRUCTION